

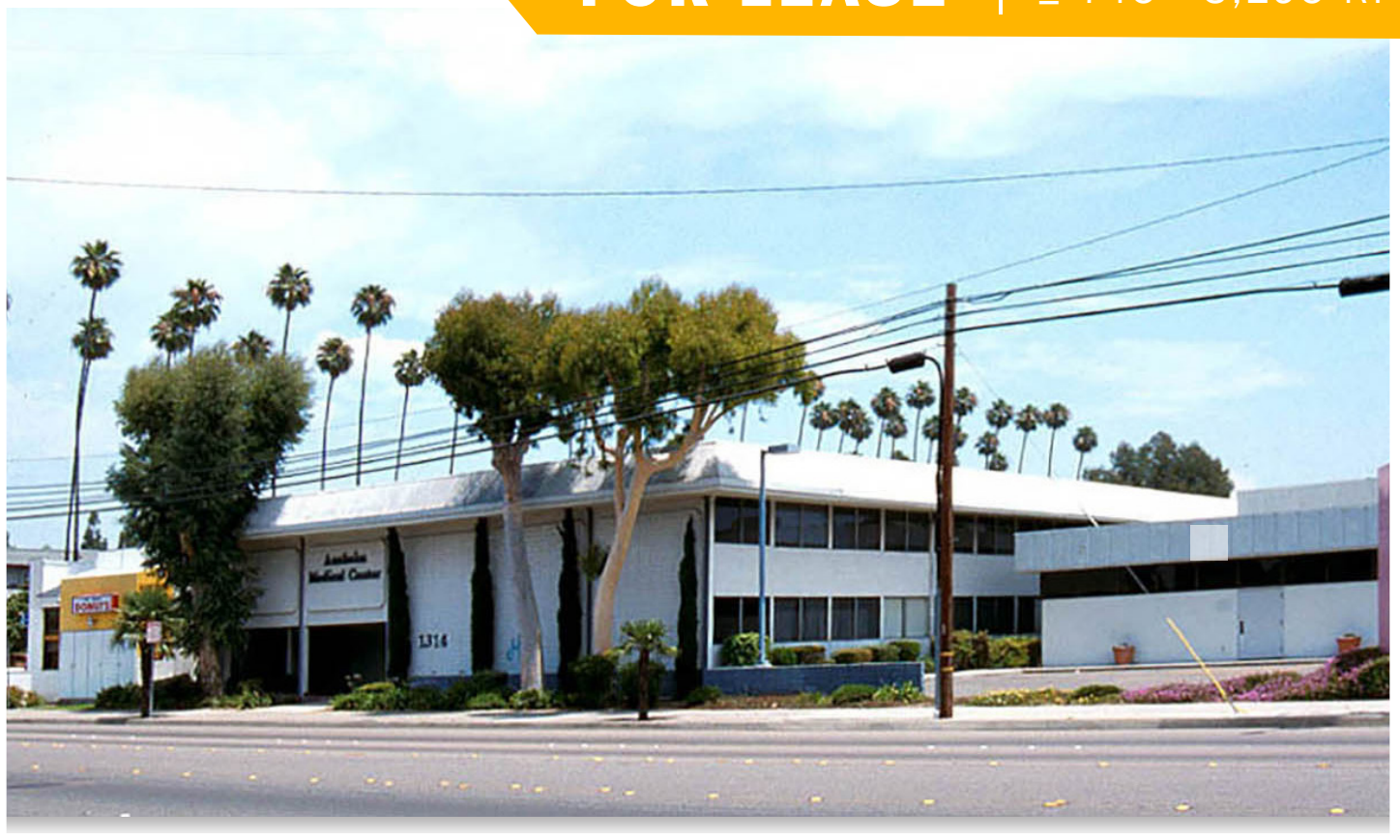


MadisonMarquette
A Capital Guidance Company

Medical Office Suites

1314 S EUCLID ST., ANAHEIM, CA 92802

FOR LEASE | ± 745 - 3,195 RF



1314 S Euclid St., Anaheim, CA 92802

Property Features

- Ideal for Medical Office
- Wide range of Physician Specialites
- Central Anaheim Location

- Medical Ready Offices
- Available for Immediate Occupancy
- Adjacent to DaVita Dialysis

CONTACT INFORMATION:

Eileen Doody

Senior Vice President Healthcare Services

949.390.5506 | CalBRE 00965140

Eileen.Doody@madisonmarquette.com

The information contained herein has been gathered from sources deemed reliable. Though we have no reason to doubt the accuracy, we do not guarantee it.

2020 Main Street | Suite 800 | Irvine, CA 92614 | P. 949.390.5500 | F. 949.390.550

madisonmarquette.com | CalBRE 01522492

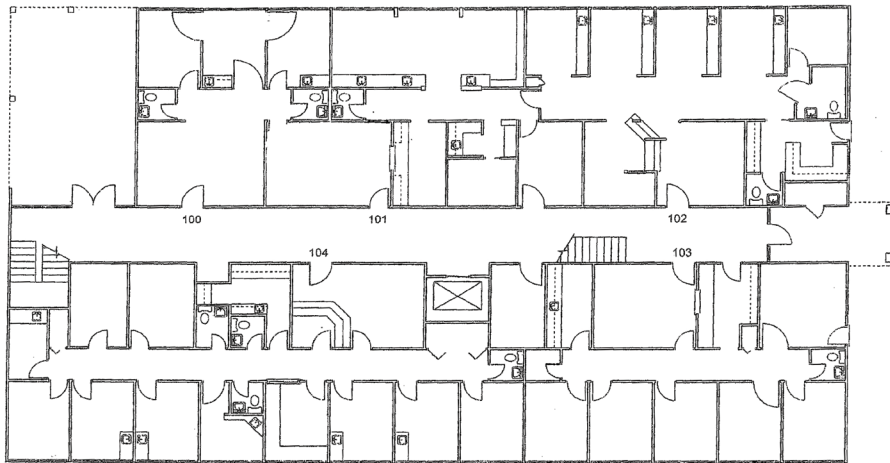
Medical Office Suites

1314 S EUCLID ST., ANAHEIM, CA 92802



MadisonMarquette
A Capital Guidance Company

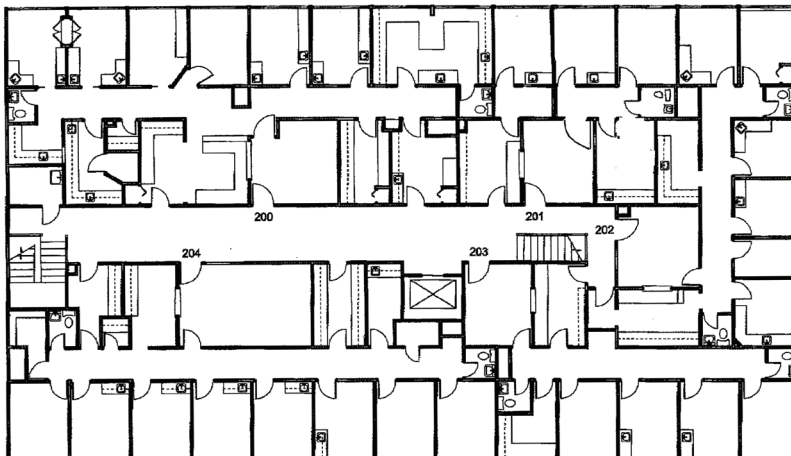
FOR LEASE | ± 745 - 3,195 RF



FIRST FLOOR

AVAILABLE SUITES:

- 100** - 1,141 SF
- 101** - 745 SF
- 102** - 1,309 SF
- 103** - 1,418 SF



SECOND FLOOR

AVAILABLE SUITES:

- 201** - 2,102 SF
- 201A** - 1,135 SF
- 208** - 1,656 SF

The information contained herein has been gathered from sources deemed reliable. Though we have no reason to doubt the accuracy, we do not guarantee it.

Eileen Doody | SVP Healthcare Services | 949.390.5506 | CalBRE 00965140 | Eileen.Doody@madisonmarquette.com

2020 Main Street, Suite 800, Irvine, CA, 92614 | madisonmarquette.com | CalBRE 01522492