



# 8100 WESTSIDE INDUSTRIAL DRIVE

UNITS 4 & 5 - JACKSONVILLE, FL

20,000 - 80,000 S.F.



Westside Industrial Park is the largest industrial park in Northeast Florida, and home to a high percentage of the paramount manufacturing and distribution facilities in the Jacksonville market. Availabilities within the park range from 20,000 to 300,000 square feet, and offer quick access to major highways, ports, and airport.

Westside Industrial Park occupants benefit from the park's adjacency to the UPS regional distribution center, the CSX intermodal yard, and close proximity to a high caliber labor force. In addition, the Norfolk Southern intermodal yard is within three miles; and most major trucking companies are within five miles.

[www.westsideindustrialpark.com](http://www.westsideindustrialpark.com)



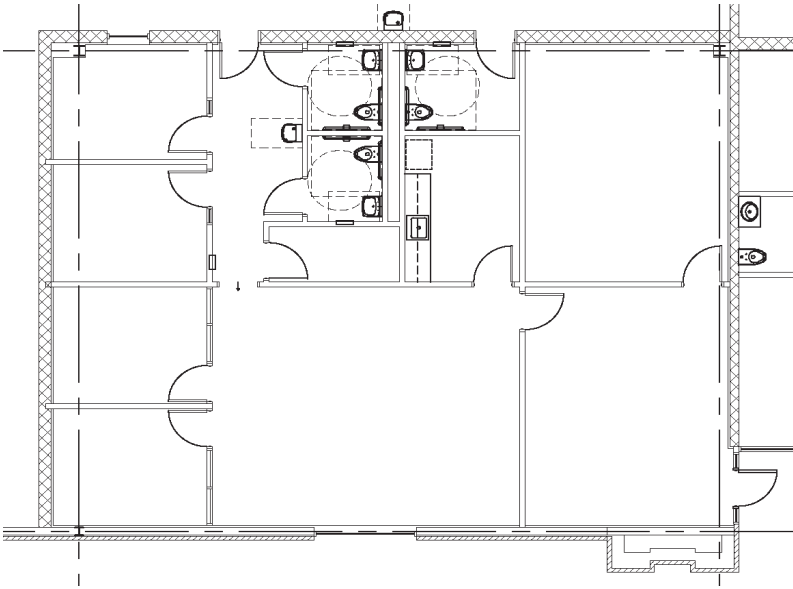
# Building specifications

| Features              |  |                       |  |
|-----------------------|--|-----------------------|--|
| <b>Available</b>      | Unit 4 - 20,000 s.f.<br>Unit 5 - 60,000 s.f. | <b>Drive-in doors</b> | Unit 4 - 1 dock w/ramp<br>Unit 5 - 1 dock w/ ramp<br>1 grade level       |
| <b>Office (s.f.)</b>  | Unit 4 - 2,232 s.f.<br>Unit 5 - 2,943 s.f.   | <b>Dock equipment</b> | Unit 4 - 3 mechanical pit levelers<br>Unit 5 - 6 mechanical pit levelers |
| <b>Year built</b>     | 1993   | <b>Lighting</b>       | Metal halide   |
| <b>Clear height</b>   | 24'  | <b>Truck court</b>    | 120' paved   |
| <b>Column spacing</b> | 40' x 50'                                    | <b>Auto parking</b>   | 1/1,000 s.f.   |
| <b>Docks doors</b>    | Unit 4 - 6<br>Unit 5 - 17                    | <b>Power</b>          | Unit 4 - 600 amp/480v 3p<br>Unit 5 - 600 amp/480v 3p                     |

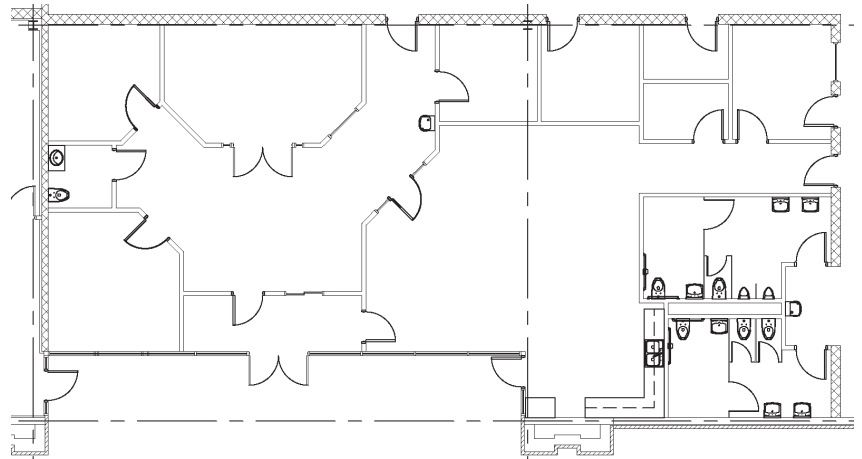
## Aerial map



# Office plans

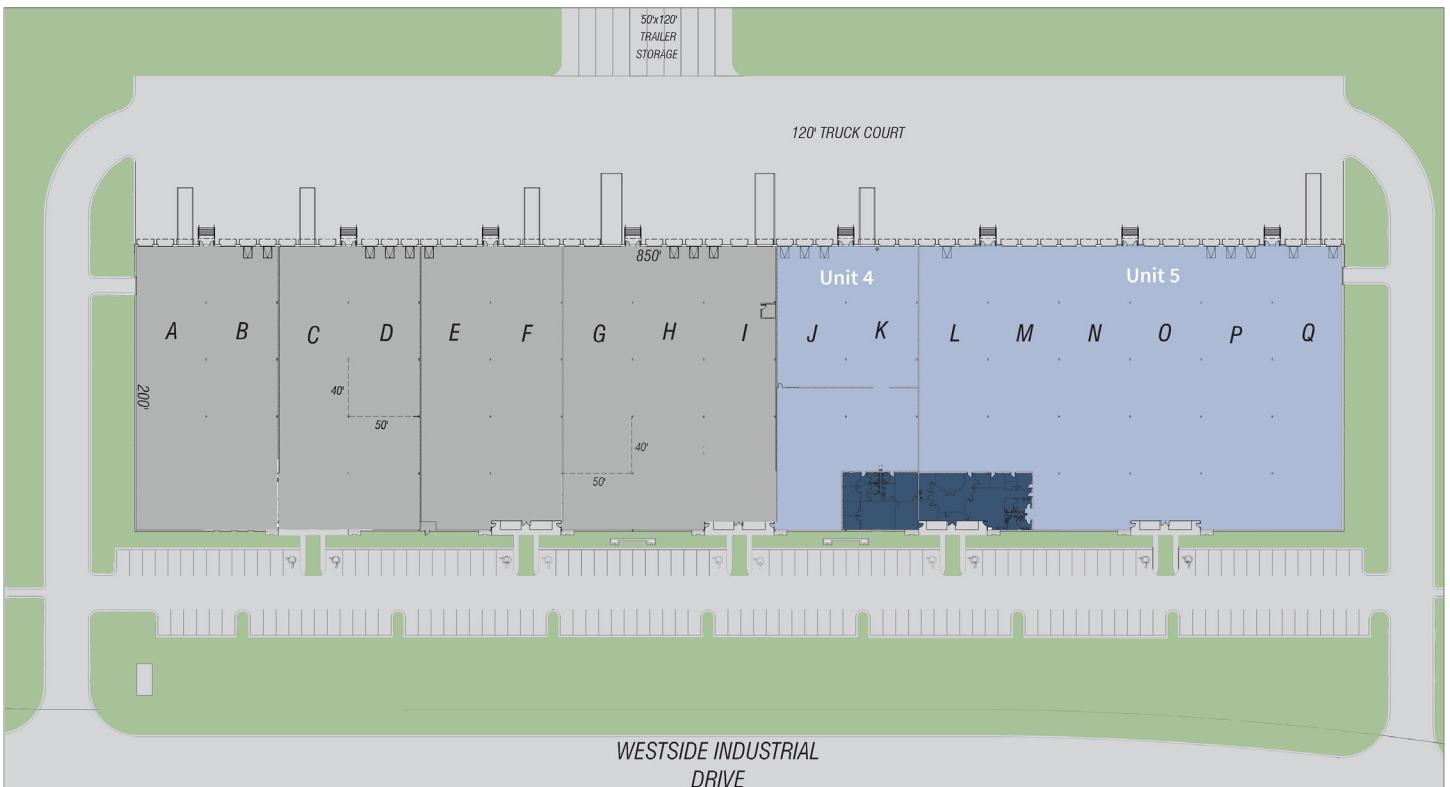


**Unit 4 - 2,232 s.f.**



**Unit 5 - 2,943 s.f.**

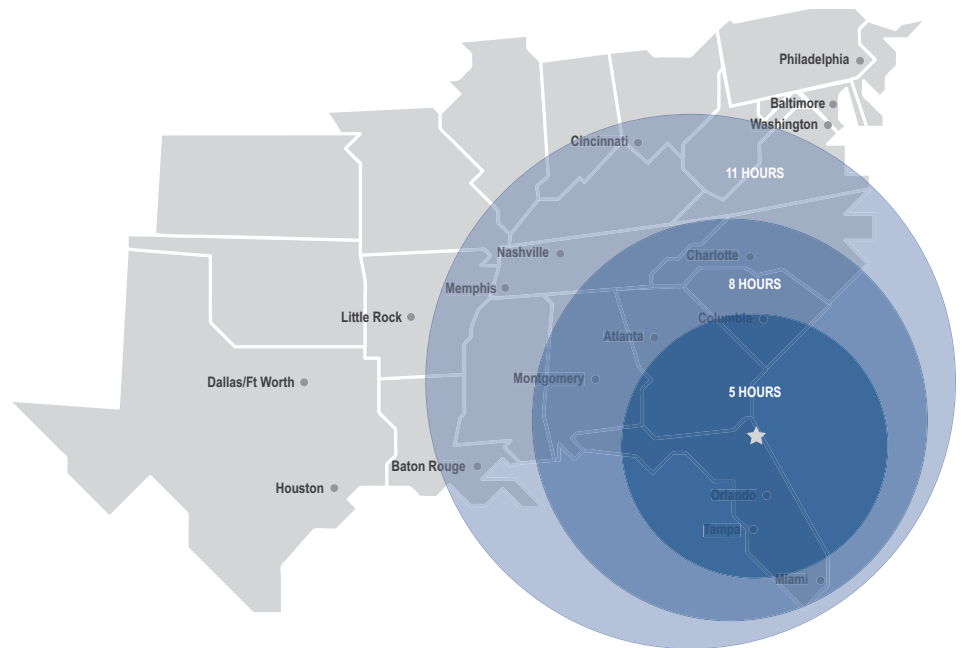
# Site plan





## Notable Drive Times

| Location       | Distance  |
|----------------|-----------|
| Savannah, GA   | 142 miles |
| Orlando, FL    | 154 miles |
| Tampa, FL      | 209 miles |
| Charleston, SC | 242 miles |
| Atlanta, GA    | 345 miles |
| Miami, FL      | 359 miles |
| Montgomery, AL | 366 miles |
| Charlotte, NC  | 387 miles |
| Baltimore, MD  | 846 miles |
| Houston, TX    | 862 miles |



## Contact

Luke Pope, Executive Vice President  
 luke.pope@am.jll.com  
 +1 904 356 4550

### DISCLAIMER

Although information has been obtained from sources deemed reliable, Owner, Jones Lang LaSalle, and/or their representatives, brokers or agents make no guarantees as to the accuracy of the information contained herein, and offer the Property without express or implied warranties of any kind. The Property may be withdrawn without notice. ©2017. Jones Lang LaSalle. All rights reserved.

