



2125 EAST HENNEPIN AVE  
MINNEAPOLIS

**NOW LEASING**



**BRICK & TIMBER** NORTHEAST MINNEAPOLIS  
OFFICE SPACE WITH **FREE PARKING**



**SPACE AVAILABLE:**

7,320 SF

**LEASE RATE:**

\$16.00 NET

**TAX & OPS:**

\$10.67

**PROPERTY HIGHLIGHTS:**

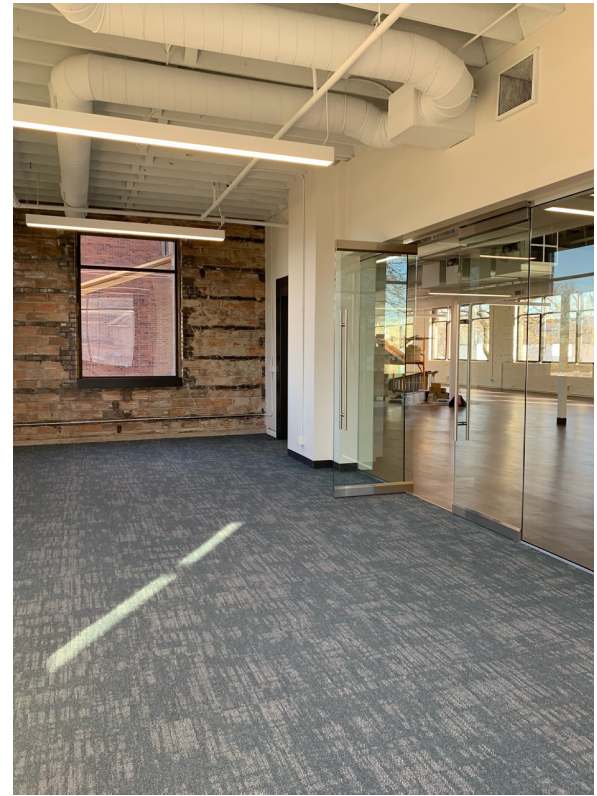
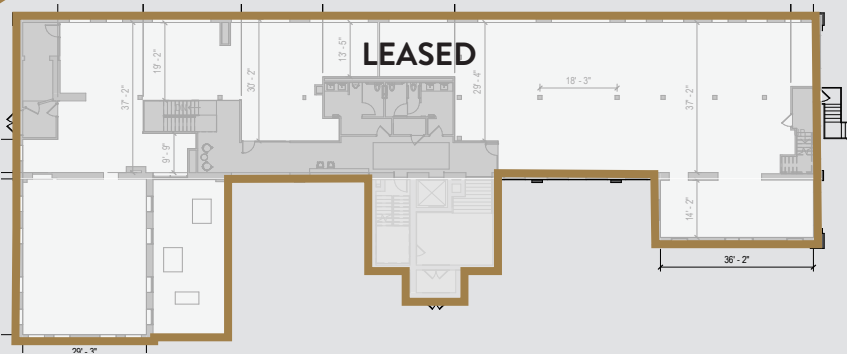
- Highly sought after brick and timber finishes with high ceilings
- Common area patio
- Common lockers and showers
- Free parking with a 3.25/1,000 ratio
- Walkability to coffee shops, breweries, and restaurants
- Three efficient floor plates with abundance of natural light
- Great visibility and access to Hennepin, Central, Highway 280, I35-W



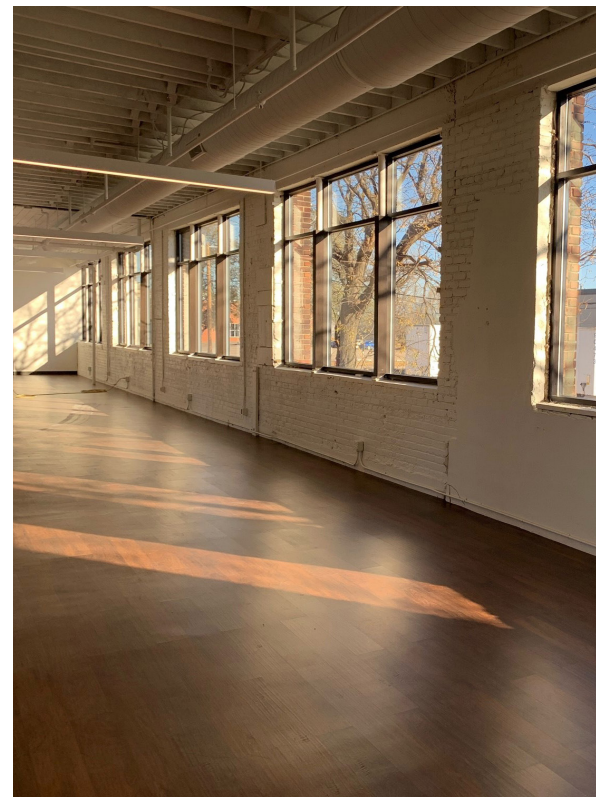
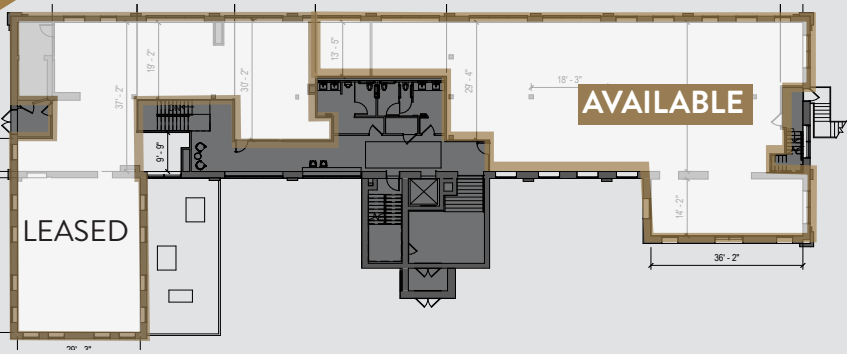


# FLOOR PLANS

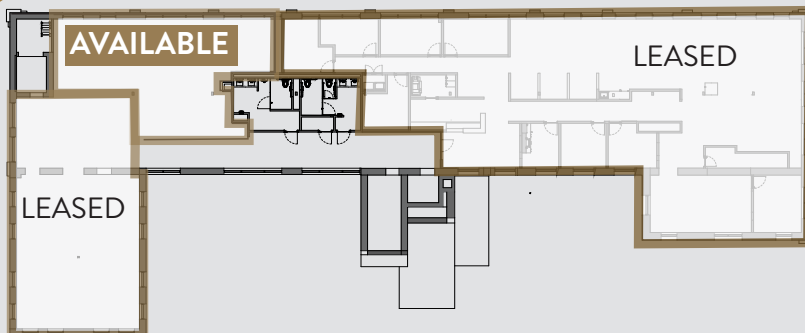
## FIRST FLOOR



## SECOND FLOOR 5,343 SF



## THIRD FLOOR 1,977 SF





The information contained herein has been obtained from sources deemed reliable but has not been verified and no guarantee, warranty or representation, either express or implied, is made with respect to such information. Terms of sale or lease and availability are subject to change or withdrawal without notice.

## CONTACT

STEVE SHEPHERD SIOR  
Managing Director  
T +1 612 430 9973  
steve.shepherd@ngkf.com

MATT ELDER CCIM  
Associate Director  
T +1 612 430 9974  
matt.elder@ngkf.com

NEWMARK

100 South 5th Street #2100, Minneapolis, MN 55402

