

SUBJECT PROPERTY LIES WITHIN AN AREA DESIGNATED AS ZONE "X" ON COMMUNITY PANEL 1322300220 B OF THE FLOOD INSURANCE RATE MAPS FOR PAULDING COUNTY PREPARED BY F.E.M.A. DATED NOV. 8, 1999

TECHNICAL DATA
 TRAVERSE PRECISION - 1' IN 17,345'
 ANGLE ADJUSTMENT - 2" PER ANGLE POINT
 TRAVERSE ADJUSTMENT - COMPASS RULE
 PLAT PRECISION - 1' IN 553,328'
 EQUIPMENT - SOKKIA SET 2-100

THE LOCATION OF UNDERGROUND UTILITIES AS SHOWN HEREON ARE BASED ON ABOVE-GROUND STRUCTURES AND RECORD DRAWINGS PROVIDED TO THE SURVEYOR. LOCATIONS OF UNDERGROUND UTILITIES/STRUCTURES MAY VARY FROM LOCATIONS SHOWN HEREON. ADDITIONAL BURIED UTILITIES/STRUCTURES MAY BE ENCOUNTERED. NO EXCAVATIONS WERE MADE DURING THE PROGRESS OF THIS SURVEY TO LOCATE BURIED UTILITIES/STRUCTURES.

1500

0 1' DTP

0 1' RR

TOTAL AREA
 4.23 ACRES



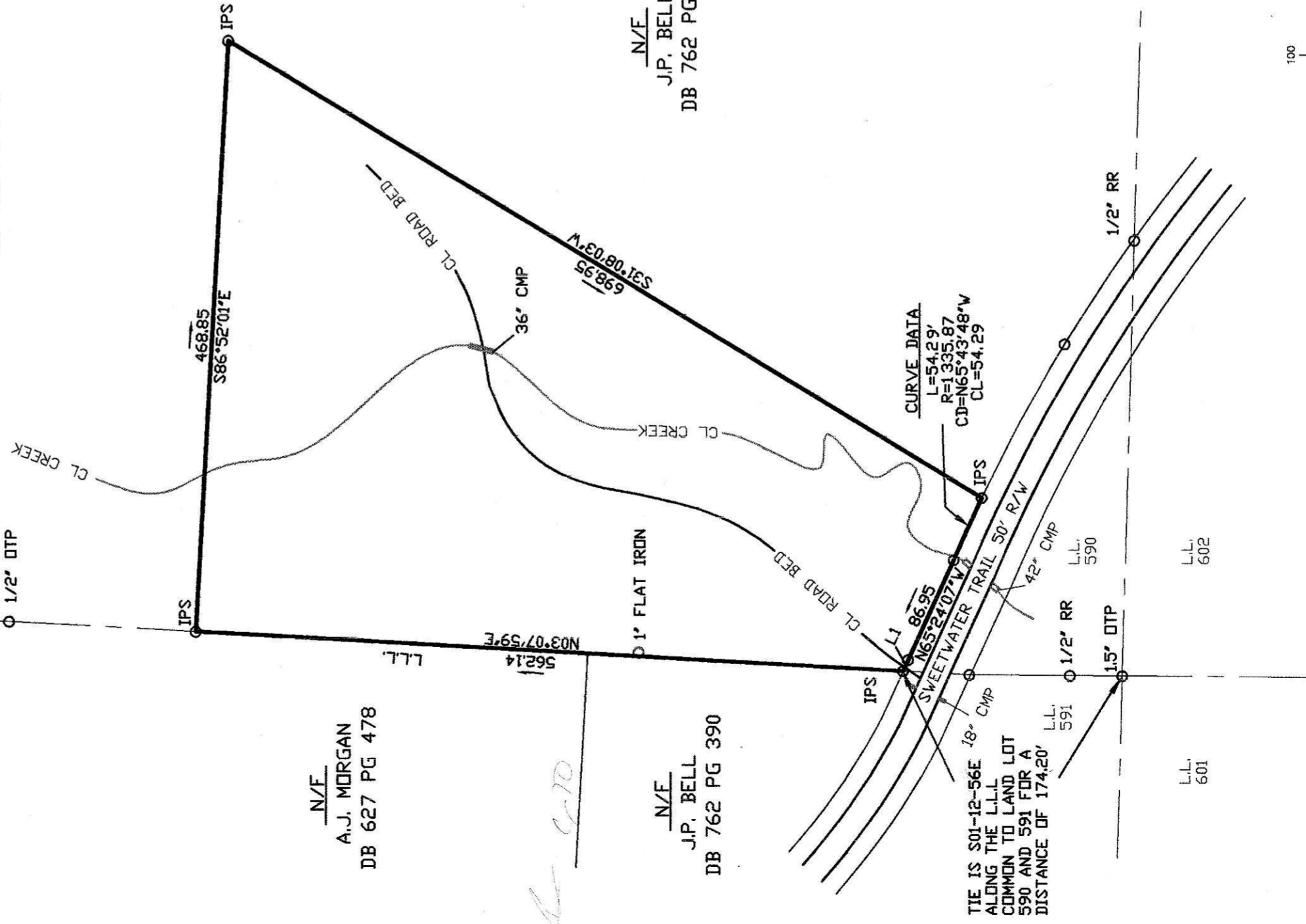
LINE TABLE		
LINE	LENGTH	BEARING
L1	9.83	N65°24'07"W

N/E
 J.P. BELL
 DB 762 PG 390

N/E
 A.J. MORGAN
 DB 627 PG 478

N/E
 J.P. BELL
 DB 762 PG 390

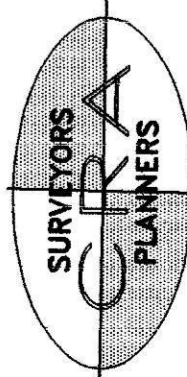
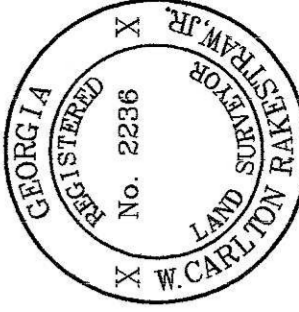
N/E
 J.P. BELL
 DB 762 PG 390



LEGEND

- IPF --- IRON PIN FOUND
- IPB --- IRON PIN SET
- RB --- REBAR
- OIP --- OPEN TOP PIPE
- CIP --- CRIMP TOP PIPE
- CLF --- CHAIN LINK FENCE
- LLL --- LAND LOT LINE
- P/POLE --- POWER POLE
- GW --- GUY WIRE
- FH --- FIRE HYDRANT
- S/POLE --- SERVICE POLE
- W- --- WATER MAIN
- SS- --- SANITARY SEWER
- CL- --- CENTERLINE
- EP- --- EDGE OF PAVEMENT
- WM --- WATER METER
- GV --- GATE VALVE
- CMP --- CORRUGATED METAL PIPE
- RCP --- REINFORCED CONCRETE PIPE
- MH --- MANHOLE
- SWCB --- SINGLE WING CATCH BASIN
- DWCB --- DOUBLE WING CATCH BASIN
- JB --- JUNCTION BOX
- HDWL --- HEADWALL
- DI --- DROP INLET
- R/W --- RIGHT-OF-WAY
- D/A --- DRAINAGE AREA
- C/D --- CROSS DRAIN
- EL --- ELEVATION
- B/M --- BENCH MARK
- B/L --- BUILDING LINE
- P/L --- PROPERTY LINE
- T/H --- TEST HOLE
- CMF --- CONCRETE MONUMENT FOUND
- D/E --- DRAINAGE EASEMENT
- SSE --- SANITARY SEWER EASEMENT
- P O B --- POINT OF BEGINNING

GRAPHIC SCALE



CARLTON RAKESTRAW & ASSOCIATES
 REGISTERED LAND SURVEYORS
 764 MARIETTA HIGHWAY - DALLAS, GEORGIA 30157
 PHONE: (770) 443-2200 - FAX: (770) 443-2300

PROJECT No. 01-063
 PLOT FILE # 01-063WS.DWG
 DATE: 11/28/01
 DRAWN BY: W.C.R.3
 APPROVED BY: W.C.R.

LOCATED IN LAND LOT(S) 590
 1ST DISTRICT, 3RD SECTION
 PAULDING COUNTY, GEORGIA

KEVIN BELL