

Office Building For Lease

## // MEDICAL OFFICE BUILDING

N 725 Stanley, Medical Lake, WA 99022



// PRESENTED BY:

**CORY BARBIERI**  
VICE PRESIDENT  
509.344.4901  
CBARBIERI@G-B.COM

**RYAN OBERG**  
COMMERCIAL LEASING & SALES BROKER  
509.990.8423  
RYAN.OBERG@G-B.COM



# // PROPERTY SUMMARY



## PROPERTY HIGHLIGHTS

- Amenities Include:
- Great location
- Built in 2005
- Paved surface parking
- Pylon signage available
- 12 Private Offices and Multiple Exam Rooms
- Storage closets and breakroom

SPACES	LEASE RATE		SPACE SIZE
Medical Office Space	\$16.50/sf/yr + NNN		6,000 SF
DEMOGRAPHICS	1 MILE	5 MILES	10 MILES
Total Households	270	4,669	15,026
Total Population	842	16,667	48,656
Average HH Income	\$70,431	\$64,267	\$57,091

// PRESENTED BY:

**CORY BARBIERI**  
VICE PRESIDENT  
509.344.4901  
CBARBIERI@G-B.COM

**RYAN OBERG**  
COMMERCIAL LEASING & SALES BROKER  
509.990.8423  
RYAN.OBERG@G-B.COM



## // ADDITIONAL PHOTOS



// PRESENTED BY:

**CORY BARBIERI**  
VICE PRESIDENT  
509.344.4901  
CBARBIERI@G-B.COM

**RYAN OBERG**  
COMMERCIAL LEASING & SALES BROKER  
509.990.8423  
RYAN.OBERG@G-B.COM



## // ADDITIONAL PHOTOS



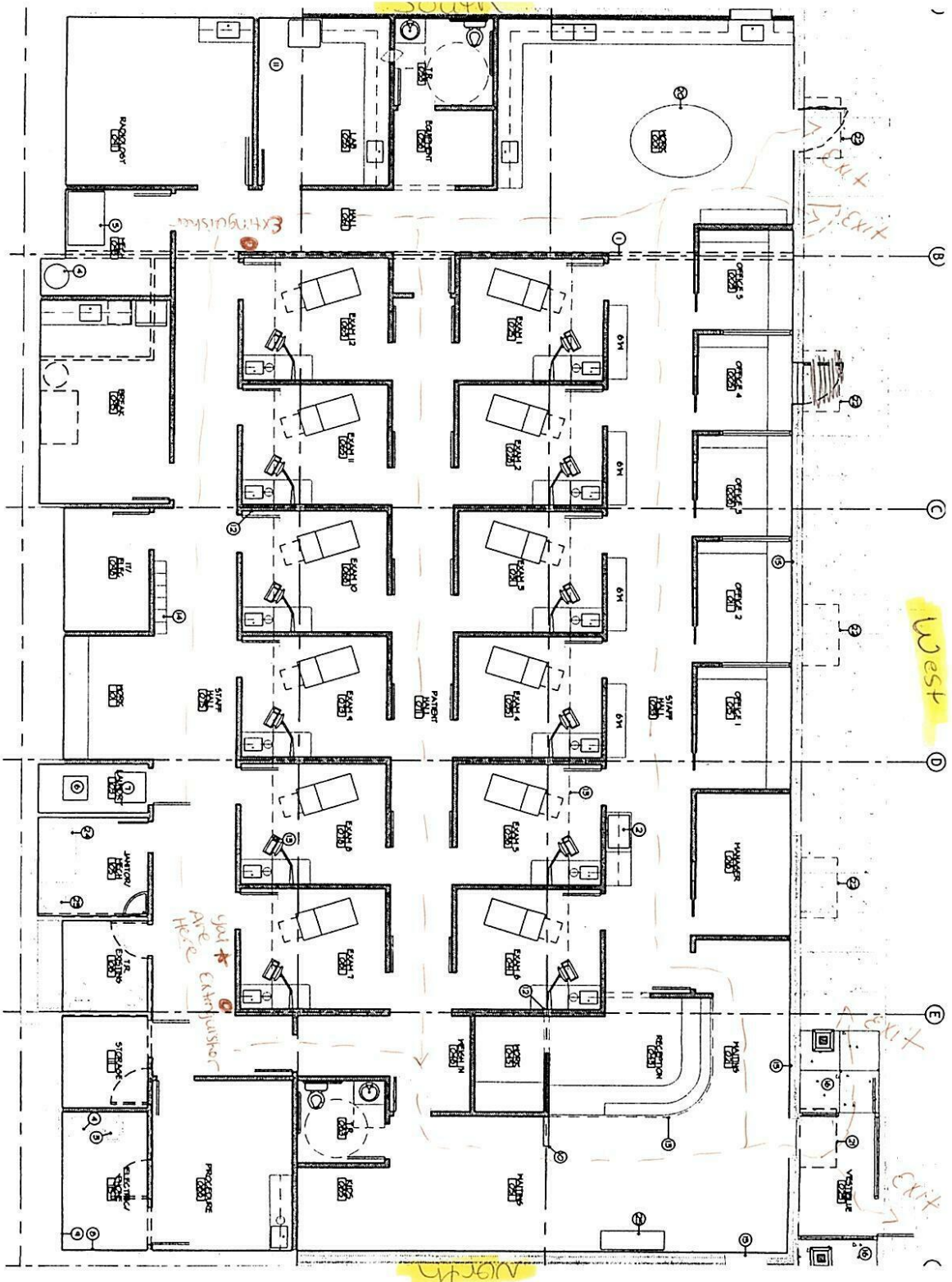
// PRESENTED BY:

**CORY BARBIERI**  
VICE PRESIDENT  
509.344.4901  
CBARBIERI@G-B.COM

**RYAN OBERG**  
COMMERCIAL LEASING & SALES BROKER  
509.990.8423  
RYAN.OBERG@G-B.COM



# // FLOOR PLAN



// PRESENTED BY:

**CORY BARBIERI**  
VICE PRESIDENT  
509.344.4901  
CBARBIERI@G-B.COM

**RYAN OBERG**  
COMMERCIAL LEASING & SALES BROKER  
509.990.8423  
RYAN.OBERG@G-B.COM



# // MEDICAL LAKE RETAILER MAP

Fairchild Airforce Base 6.5 Miles North

Downtown Spokane 13 Miles East

Lakes Harvest Foods

The Park at Medical Lake  
New Apartment Complex



Monark Self Storage



Stanley Self Storage

Medical Lake High School

Google

Imagery ©2022 , Maxar Technologies, U.S. Geological Survey, USDA/FPAC/GEO

// PRESENTED BY:

**CORY BARBIERI**

VICE PRESIDENT  
509.344.4901

CBARBIERI@G-B.COM

**RYAN OBERG**

COMMERCIAL LEASING & SALES BROKER  
509.990.8423

RYAN.OBERG@G-B.COM

