

171 CONSTITUTION DRIVE, MENLO PARK

FOR LEASE

±13,840 sf

OFFICE/R&D SPACE



SARAH BOHANNON | 650.358.5268 | sbohannon@ngkf.com | CA RE License #01940402

HOWIE DALLMAR | 650.688.8530 | hdallmar@ngkf.com | CA RE License #00864566

BRAD VAN LINGE | 650.688.8522 | bvanlinge@ngkf.com | CA RE License #00832009



highlights

- Freestanding Building
- High Tech Open Ceiling Environment
- Monument and Building Signage Available
- Ample Parking
- Excellent Access to Highway 101 and the Dumbarton Bridge
- Shuttle to Downtown Menlo Park Caltrain Station
- Direct Lease from the Bohannon Development Company

floor plan

±13,840 SF

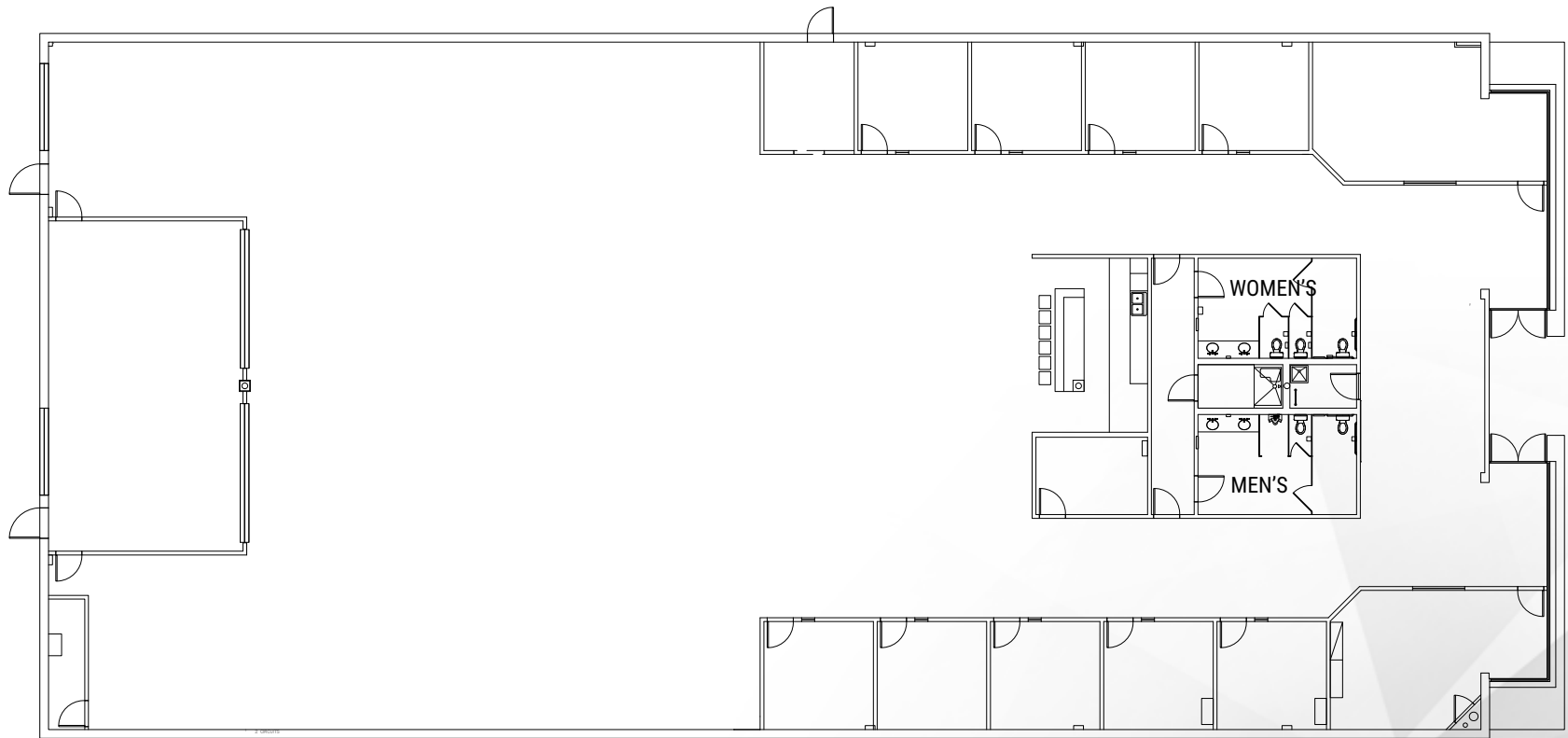


photo gallery

±13,840 SF



shuttle schedule

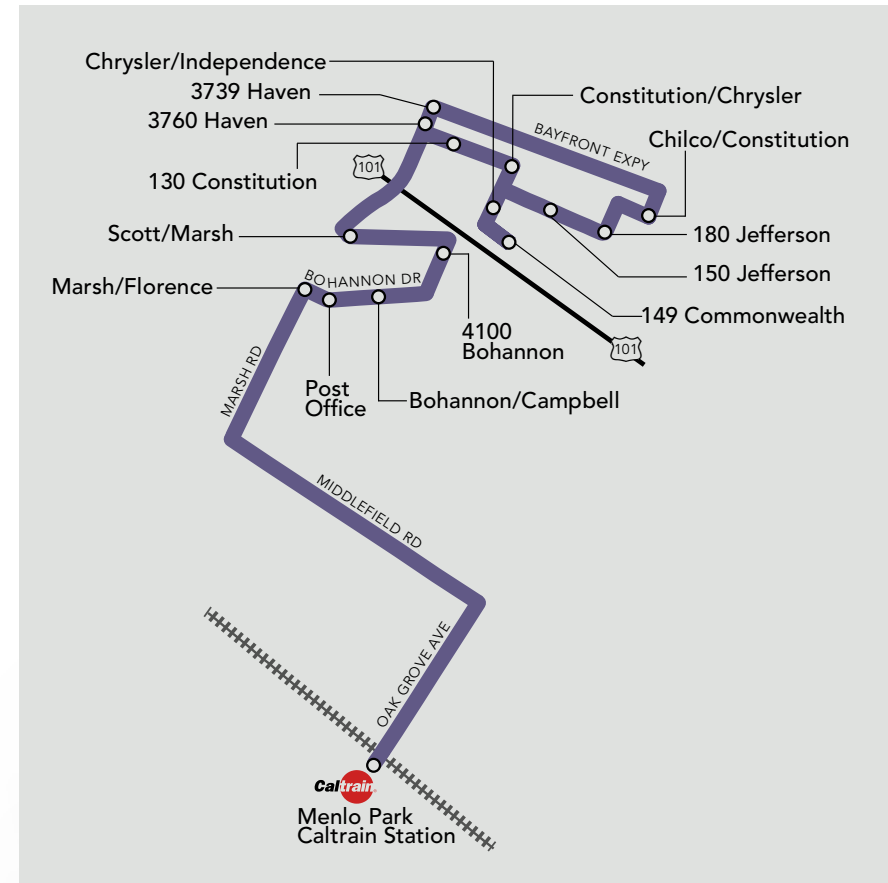
WEEKDAY

Morning Schedule

	RUN 1	RUN 2	RUN 3	RUN 4	RUN 5	RUN 6	RUN 7
Menlo Park Caltrain (Depart)	6:59		7:59		8:56		10:01
Post Office	7:06		8:06		9:03		10:08
Bohannon/Campbell	7:07		8:07		9:04		10:09
4100 Bohannon	7:09		8:09		9:06		10:11
Scott/Marsh	7:10		8:10		9:07		10:12
130 Constitution	7:15		8:15		9:12		10:17
Constitution/Chrysler	7:16		8:16		9:13		10:18
149 Commonwealth	7:17		8:17		9:14		10:19
150 Jefferson	7:18		8:18		9:15		10:20
180 Jefferson	7:18		8:18		9:15		10:20
Chilco/Constitution	7:19		8:19		9:16		10:21
3639 Haven (Anton Menlo)	7:25		8:25		9:22		10:27
3760 Haven (Quicken)	7:27		8:27		9:24		10:29
Marsh/Florence	7:30		8:30		9:27		10:32
Menlo Park Caltrain (Arrive)	7:39		8:39		9:36		--

Afternoon Schedule

	RUN 1	RUN 2	RUN 3	RUN 4	RUN 5	RUN 6	RUN 7
Menlo Park Caltrain (Depart)		--		4:22		5:22	
130 Constitution		3:38		4:42		5:42	
Constitution/Chrysler		3:39		4:43		5:43	
149 Commonwealth		3:40		4:44		5:44	
150 Jefferson		3:41		4:45		5:45	
180 Jefferson		3:41		4:45		5:45	
Chilco/Constitution		3:42		4:46		5:46	
3639 Haven (Anton Menlo)		3:48		4:52		5:52	
3760 Haven (Quicken)		3:50		4:54		5:54	
Scott/Marsh		3:55		4:59		5:59	
4100 Bohannon		3:57		5:01		6:01	
Bohannon/Campbell		3:58		5:02		6:02	
Post Office		3:59		5:03		6:03	
Marsh/Florence		4:03		5:07		6:07	
Menlo Park Caltrain (Arrive)		4:12		5:16		6:16	



171 CONSTITUTION DRIVE, MENLO PARK

FOR LEASE
±13,840 sf
OF OFFICE/R&D SPACE

SARAH BOHANNON | 650.358.5268 | sbohannon@ngkf.com | CA RE License #01940402

HOWIE DALLMAR | 650.688.8530 | hdallmar@ngkf.com | CA RE License #00864566

BRAD VAN LINGE | 650.688.8522 | bvanlinge@ngkf.com | CA RE License #00832009

2950 SOUTH DELAWARE STREET, SUITE 125, SAN MATEO, CA 94403

The distributor of this communication is performing acts for which a real estate license is required. The information contained herein has been obtained from sources deemed reliable but has not been verified and no guarantee, warranty or representation, either express or implied, is made with respect to such information. Terms of sale or lease and availability are subject to change or withdrawal without notice. 19-0208 • 12/19

