

**FOR
LEASE**



LAKE SHORES PLAZA

**Lease Rate:
\$15.00 SF/yr**

PROPERTY OVERVIEW

Food Lion anchored shopping center adjacent to Little Creek Amphibious base

DEMOGRAPHICS

1 MILE 3 MILES 5 MILES

Households:	2,356	22,066	56,487
Population:	6,903	56,606	145,339
Avg HH Income:	\$72,622	\$74,909	\$72,614

PROPERTY HIGHLIGHTS

- Near Joint Expeditionary Base Little Creek with 30 Navy and Auxilliary Ships and 126 smaller craft
- Navy Cyber Forces, Naval Network Warfare and Expeditionary Combat Commands
- Active-duty personnel: 14,574 Civilian personnel: 4,993
- Food Lion, Navy Federal Credit Union, Second Chance Thrift

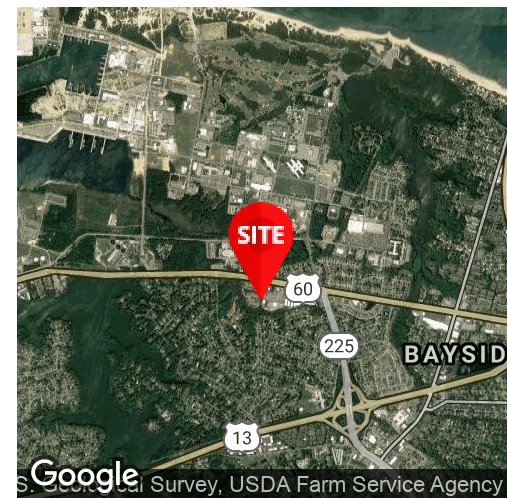
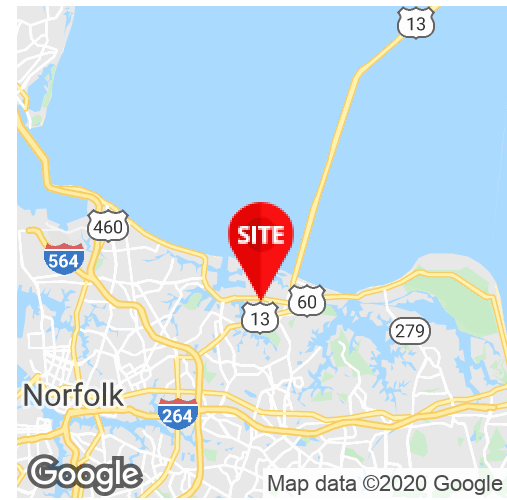
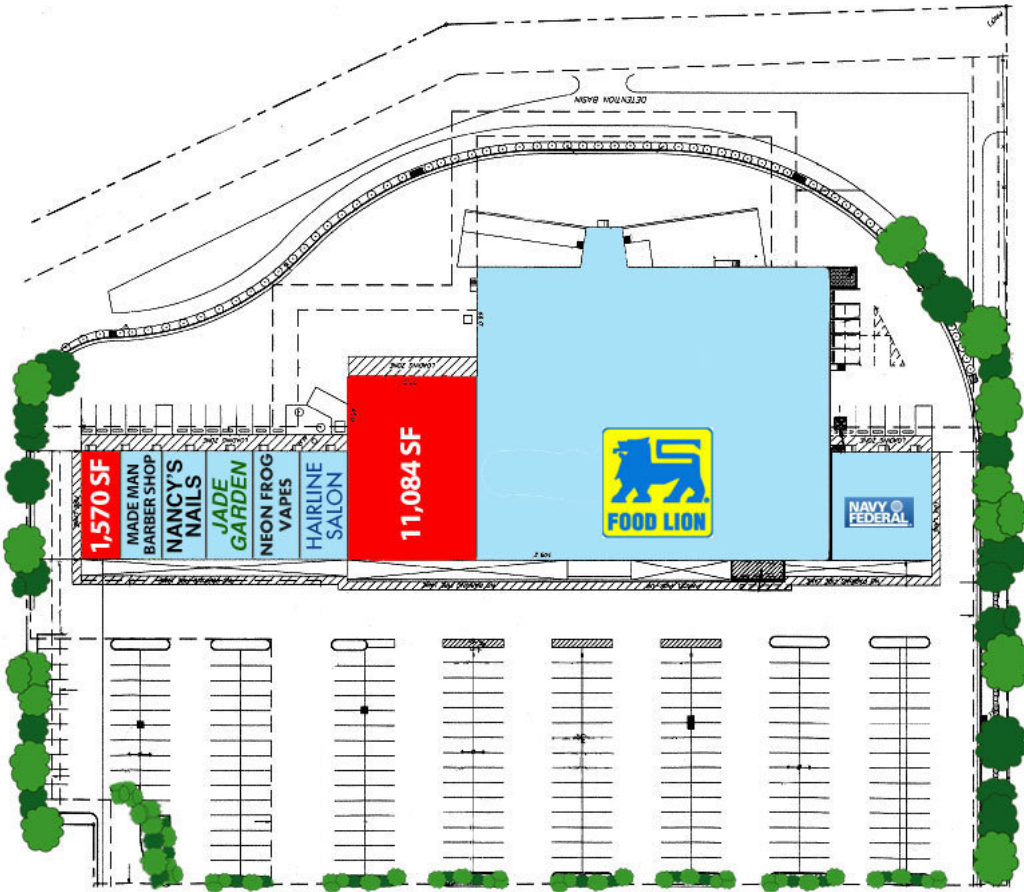
AVAILABLE SPACES

Suite 1	1,570 SF
Suite 7	11,084 SF

**FOR FURTHER INFORMATION, PLEASE CONTACT:
DAVID BICKFORD • dbickford@divaris.com • 757.333.4351**



**FOR
LEASE**



FOR FURTHER INFORMATION, PLEASE CONTACT:
DAVID BICKFORD • dbickford@divaris.com • 757.333.4351

