



**SUNRISE PLAZA**  
696 Blossom Hill Rd.  
San Jose, California

New 20,000± SF Retail/Office/Medical Building  
Coming Soon on Blossom Hill Rd.



**PROPERTY INFORMATION:**

- Two Story Building: 10,000± SF First Flr Retail, 9,300± SF Second Flr Office
- Great Parcel Size: 21,693± SF-Ground Lease Potential
- Hard -to-Find Signalized Corner Location
- Traffic Count: 32,000+ ADT
- Sunrise Plaza Tenants Include: Chavez Market, Pacific Sales, Dick's Sporting Goods (*Coming Soon*), Outback Steakhouse, Juicy Burgers & Subway

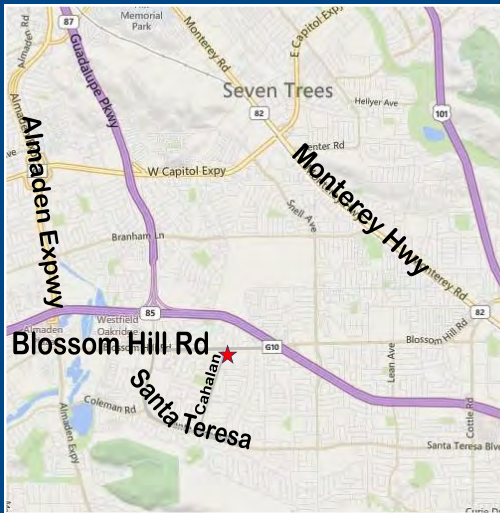
**ESTIMATED DEMOGRAPHICS:**

	<u>1 MILE</u>	<u>3 MILES</u>	<u>5 MILES</u>
POPULATION:	22,814	210,742	414,917
AVG. HH INCOME:	\$104,410	\$107,573	\$111,911

**FOR FURTHER INFORMATION CONTACT:**

**MEACHAM/OPPENHEIMER, INC.**  
**CORFAC INTERNATIONAL**  
8 No. San Pedro St., Suite 300  
San Jose, California 95110  
Tel: 408.378.5900  
Fax: 408.378.5903  
www.moinc.net

**David Taxin**  
Lic. #00983163  
[dtaxin@moinc.net](mailto:dtaxin@moinc.net)  
**(408) 477-2508 Direct**  
**(408) 378-5900**





SUNRISE PLAZA • 696 BLOSSOM HILL ROAD • SAN JOSE, CALIFORNIA

*Elevations*



MEACHAM/OPPENHEIMER, INC.  
CORFAC INTERNATIONAL  
8 No. San Pedro St., Suite 300  
San Jose, California 95110  
Tel: 408.378.5900  
www.moinc.net

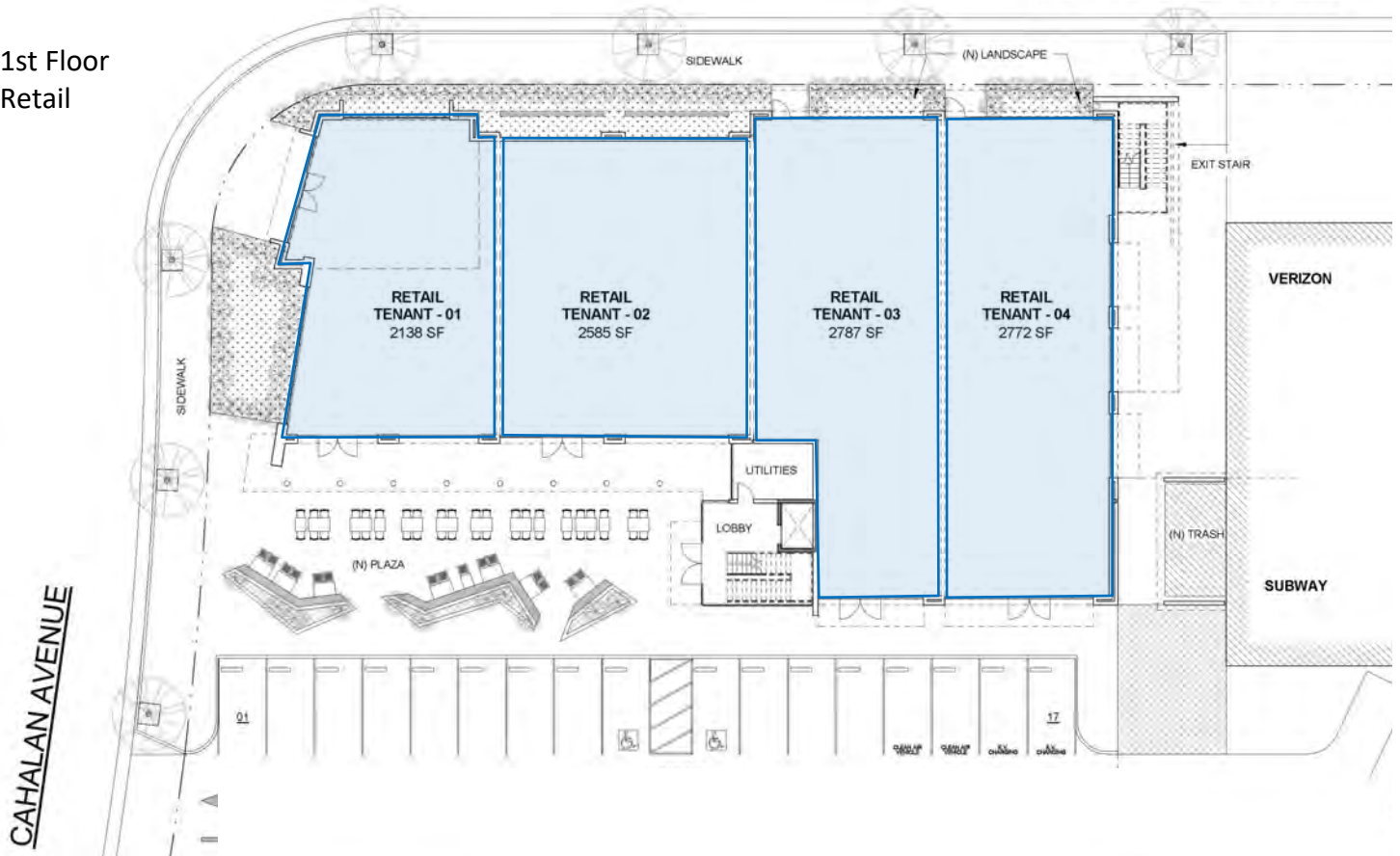
David Taxin  
Lic. #00983163  
[dtaxin@moinc.net](mailto:dtaxin@moinc.net)  
(408) 477-2508 Direct  
(408) 378-5900 Main

# SUNRISE PLAZA • 696 BLOSSOM HILL ROAD • SAN JOSE, CALIFORNIA

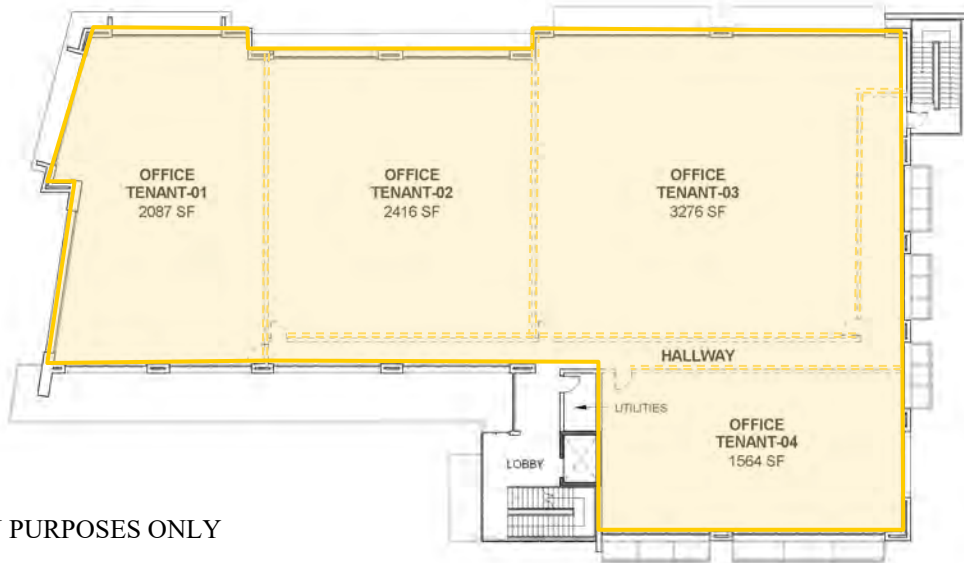
## Proposed Demising

BLOSSOM HILL ROAD

1st Floor  
Retail



2nd Floor  
Office



FOR DISCUSSION PURPOSES ONLY

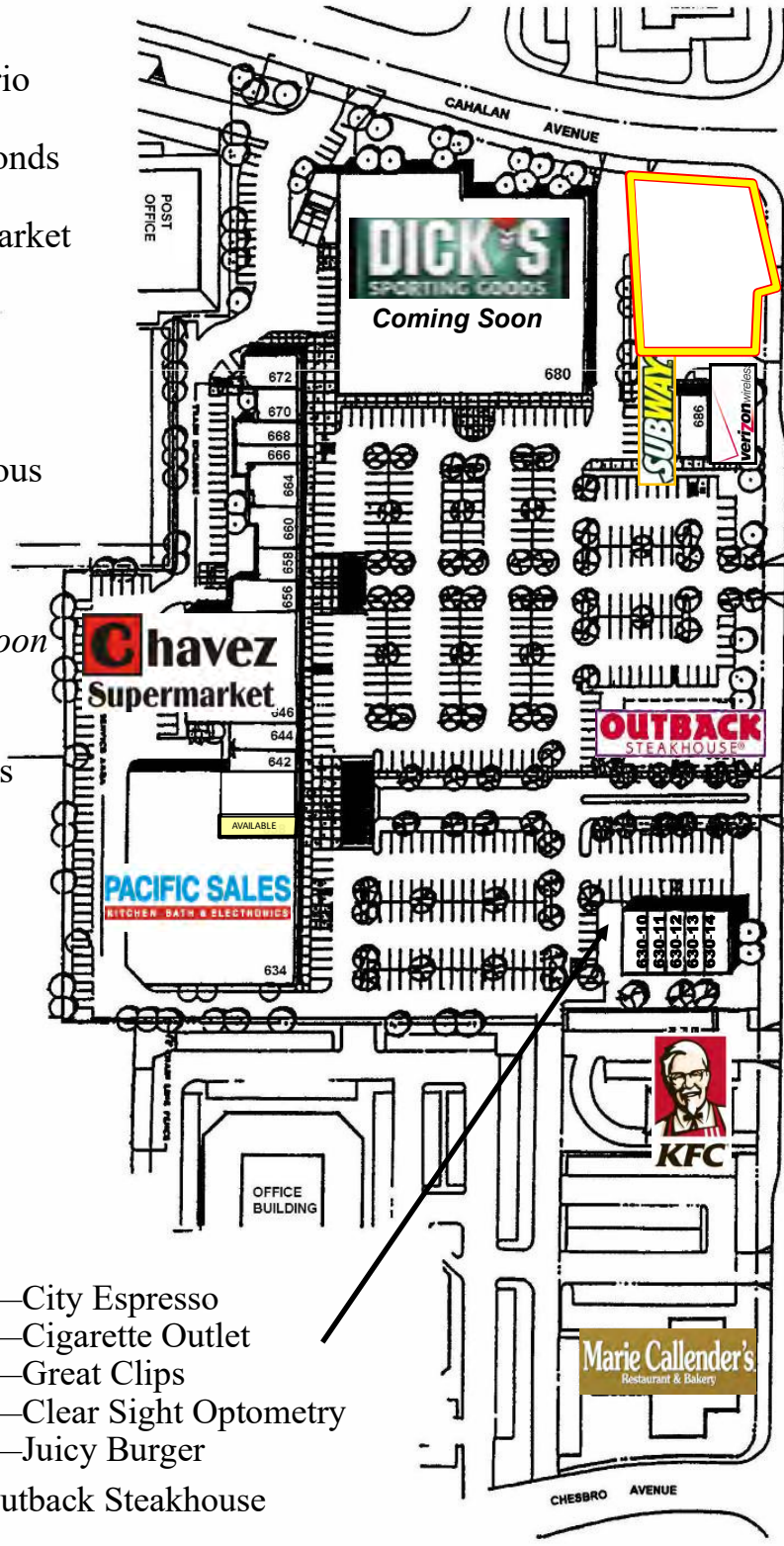
**MEACHAM/OPPENHEIMER, INC.**  
**CORFAC INTERNATIONAL**  
8 No. San Pedro St., Suite 300  
San Jose, California 95110  
Tel: 408.378.5900  
www.moinc.net

**David Taxin**  
Lic. #00983163  
[dtaxin@moinc.net](mailto:dtaxin@moinc.net)  
**(408) 477-2508 Direct**  
**(408) 378-5900 Main**



**SUNRISE PLAZA • 696 BLOSSOM HILL ROAD • SAN JOSE, CALIFORNIA**

- 634—Pacific Sales
- 636—Apoyo Financiero
- 638—Express Pizza
- 642—Jewels & Diamonds
- 644—Sally Beauty
- 646—Chavez Supermarket
- 656—
- 658—Fish & Chips
- 660—Beck Shoes
- 664—Shin Sushi
- 666—Elite Nails
- 668—Sweet Rendezvous
- 670—Bookkeeping
- 672—Dentist
- 680—Dick's Sporting Goods-Coming Soon
- 684—Subway
- 686—Chicago Title
- 690—Verizon Wireless



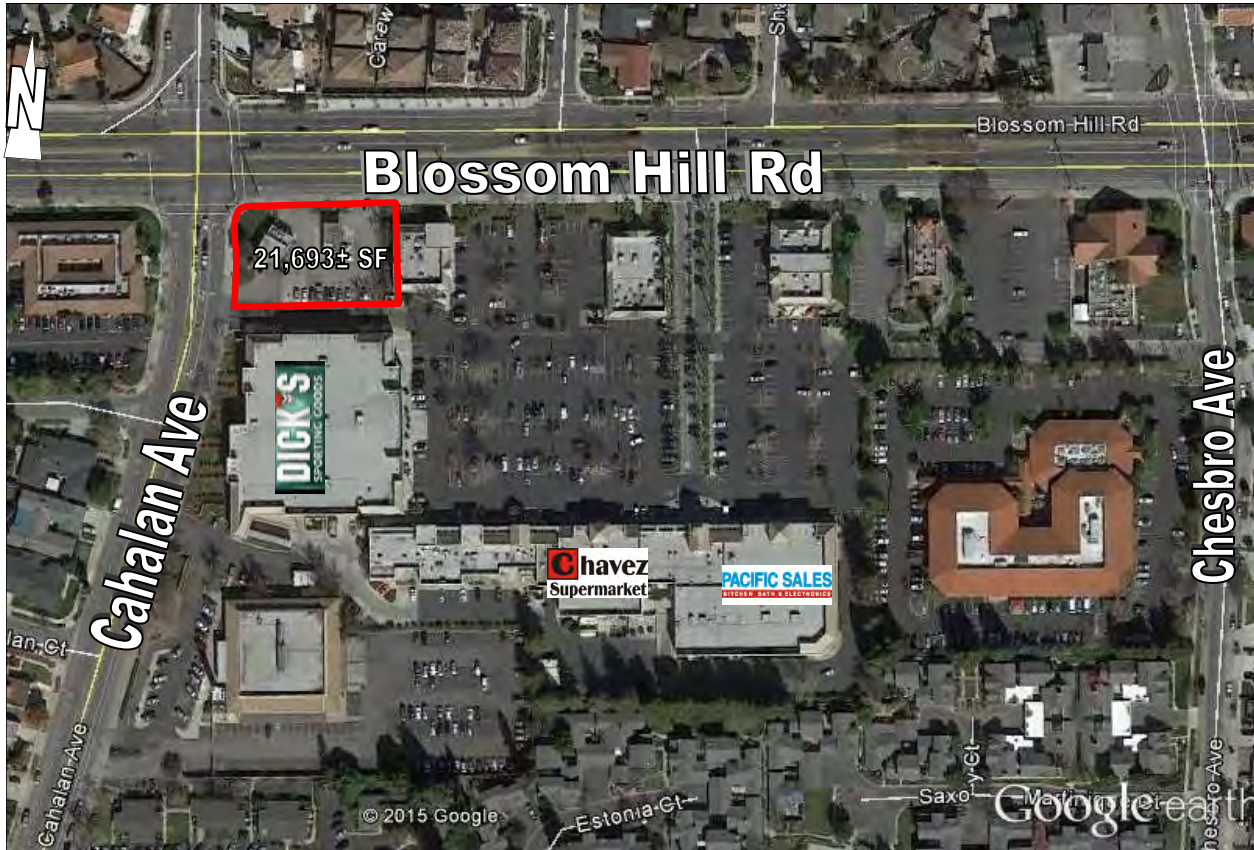
- 630-50—City Espresso
- 630-49—Cigarette Outlet
- 630-30—Great Clips
- 630-20—Clear Sight Optometry
- 630-10—Juicy Burger
- 632—Outback Steakhouse

**MEACHAM/OPPENHEIMER, INC.**  
**CORFAC INTERNATIONAL**  
 8 No. San Pedro St., Suite 300  
 San Jose, California 95110  
 Tel: 408.378.5900  
 www.moinc.net

**David Taxin**  
 Lic. #00983163  
[dtaxin@moinc.net](mailto:dtaxin@moinc.net)  
**(408) 477-2508 Direct**  
**(408) 378-5900 Main**

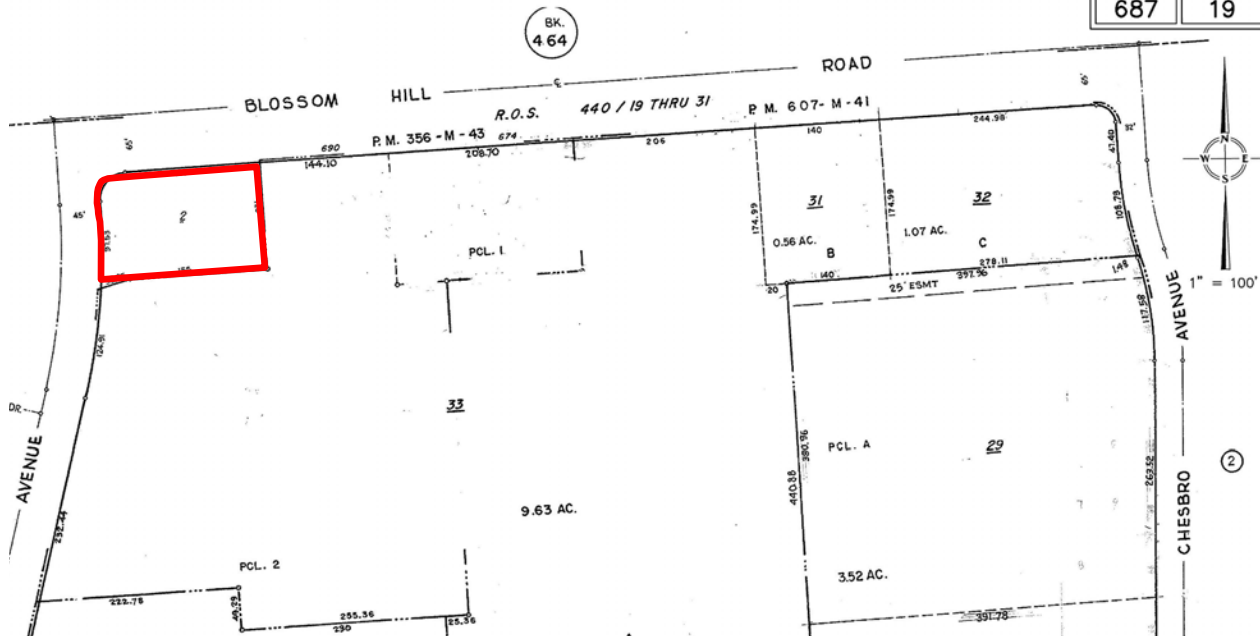
The information contained herein has been obtained from sources we deem reliable. We cannot, however, assume responsibility for its accuracy.

**SUNRISE PLAZA • 696 BLOSSOM HILL ROAD • SAN JOSE, CALIFORNIA**



OFFICE OF COUNTY ASSESSOR — SANTA CLARA COUNTY, CALIFORNIA

BOOK <b>687</b>	PAGE <b>19</b>
--------------------	-------------------

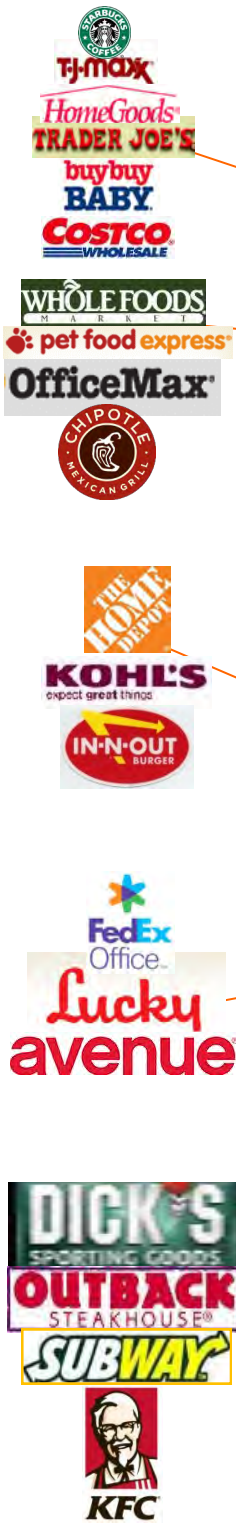


**MEACHAM/OPPENHEIMER, INC.**  
**CORFAC INTERNATIONAL**  
 8 No. San Pedro St., Suite 300  
 San Jose, California 95110  
 Tel: 408.378.5900  
 www.moinc.net

**David Taxin**  
 Lic. #00983163  
[dtaxin@moinc.net](mailto:dtaxin@moinc.net)  
**(408) 477-2508 Direct**  
**(408) 378-5900 Main**



SUNRISE PLAZA • 696 BLOSSOM HILL ROAD • SAN JOSE, CALIFORNIA



MEACHAM/OPPENHEIMER, INC.  
 CORFAC INTERNATIONAL  
 8 No. San Pedro St., Suite 300  
 San Jose, California 95110  
 Tel: 408.378.5900  
 www.moinc.net

David Taxin  
 Lic. #00983163  
[dtaxin@moinc.net](mailto:dtaxin@moinc.net)  
 (408) 477-2508 Direct  
 (408) 378-5900 Main