



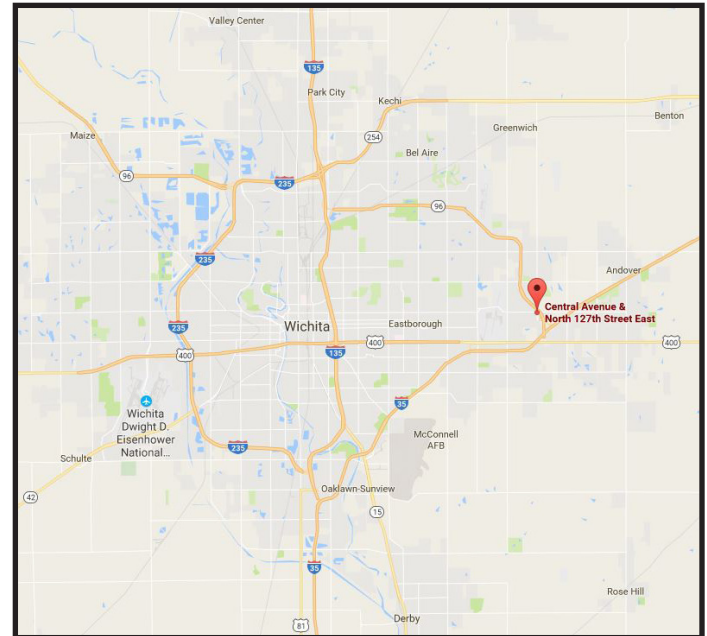
LANDMARK
COMMERCIAL
REAL ESTATE

RETAIL/OFFICE LAND FOR SALE

CENTRAL & 127TH, WICHITA, KANSAS

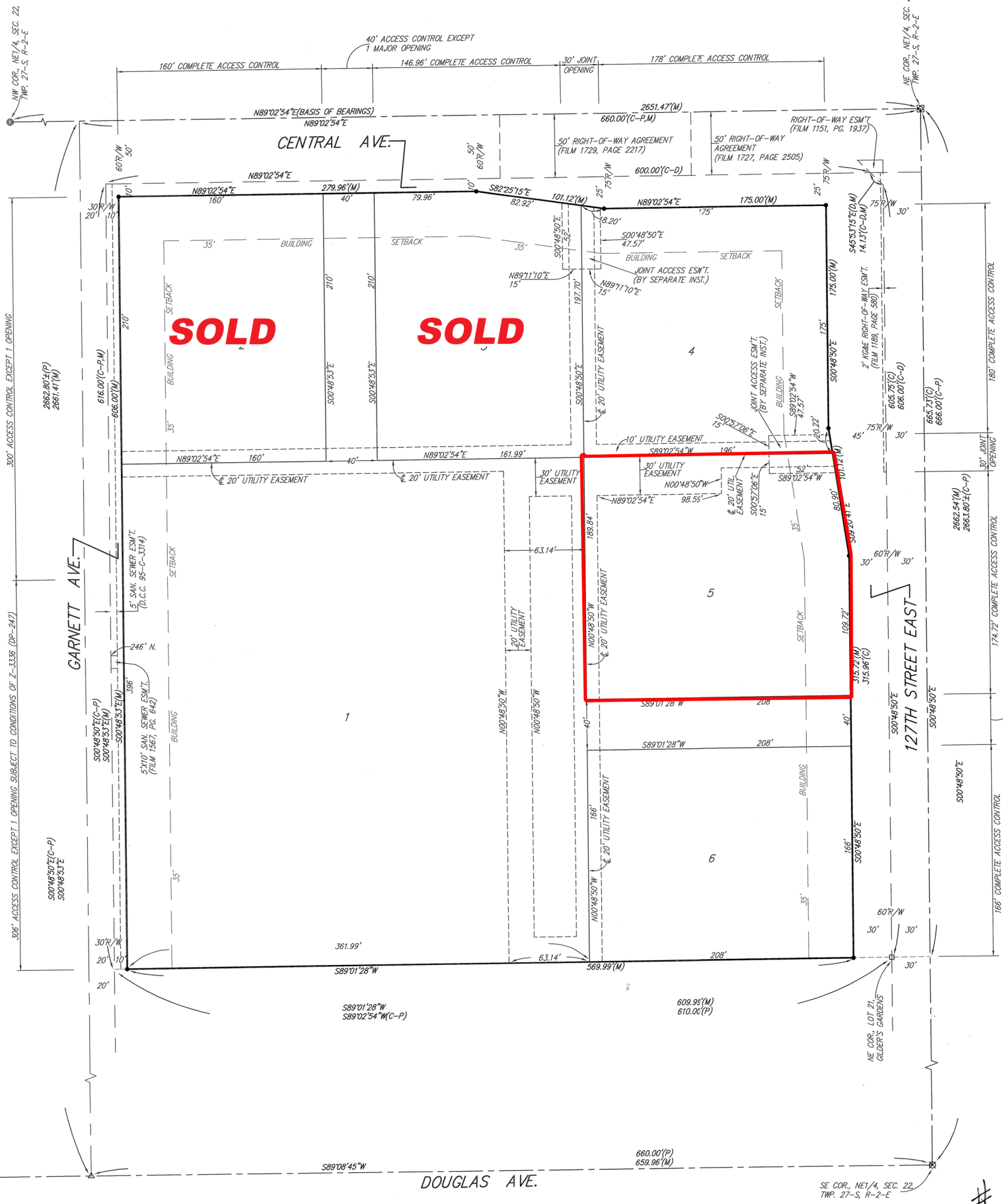


- **Location:** West of 127th on E Central
- **Available Lots:**
 - Lot 2: 33,561 sq. ft. (.77 acres) **SOLD**
 - Lot 5: 39,334 sq. ft. (.90 acres)
- **Sale Price:** \$8.00 per sq. ft.
- **2018 Taxes:**
 - Lot 5: \$2,786.40
- **Zoning:** Limited Commercial
- **Lot 5 offers 190' of 127th St frontage**
- **Easy access to Highway K-96**
- **Across the street from the newly constructed 278-unit Portofino Apartment Complex**



For More Information:

David Leyh, CCIM
 Mobile: 316-371-8087
 Office: 316-262-2442
dleyh@ccim.net



SOLD

SOLD

GARNETT AVE.

DOUGLAS AVE.

127TH STREET EAST

S89°08'45"W

S89°01'28"W
S89°02'54"W(C-P)

609.95(M)
610.00(P)

660.00(P)
659.96(M)

SE COR. NE1/4, SEC. 22
TWP. 27-S, R-2-E

#18