



Meridian Professional Park

205 15th Ave SW, Puyallup, WA 98373

Available for lease NOW is a 2,121sf professional office space at Meridian Professional Park, 205 15th Ave. SW, Puyallup, WA 98371. This office suite features a mostly open space plan of 1,200sf on the first floor with a waiting room, receptionist's counter, break room, three offices and a restroom. The 921sf on the second floor comprises two generous offices, a smaller private office, a restroom, and ample storage. There is a small freight lift/dumbwaiter between floors. The main floor offers three entrances: a nice patient or client entry into a waiting room, a staff entrance on the side of the building by the receptionist's desk, and a second staff entrance at the front of the building. Parking is generous in the lighted lot, and access is easy on either Meridian or 15th Avenue. Puyallup's medical district is close by, with Puyallup Valley Medical Clinic, Pacific Medical Center, Multicare Good Samaritan Building and Puyallup Internal Medicine Clinic. SR512 is just minutes away.

Property Overview

- Potential Buildout Allowance
- Fenced Backyard
- ADA Accessible
- Monument Signage on Meridian Ave
- Suite A - 2,121sf on Two Floors
- Lease Rate: \$20.00 NNN

DISCLAIMER: The above information has been secured from sources believed to be reliable, however, no representations are made to its accuracy. Prospective tenants or buyers should consult their professional advisors and conduct their own independent investigation. Properties are subject to change in price and/or availability without notice.

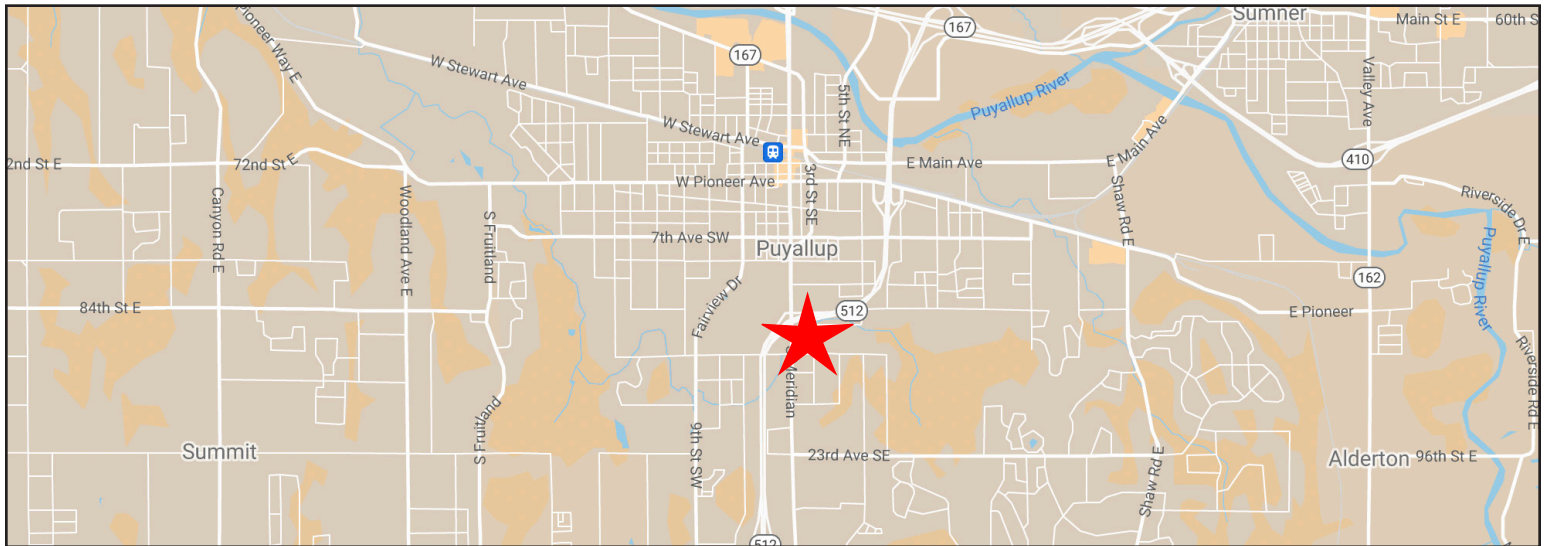




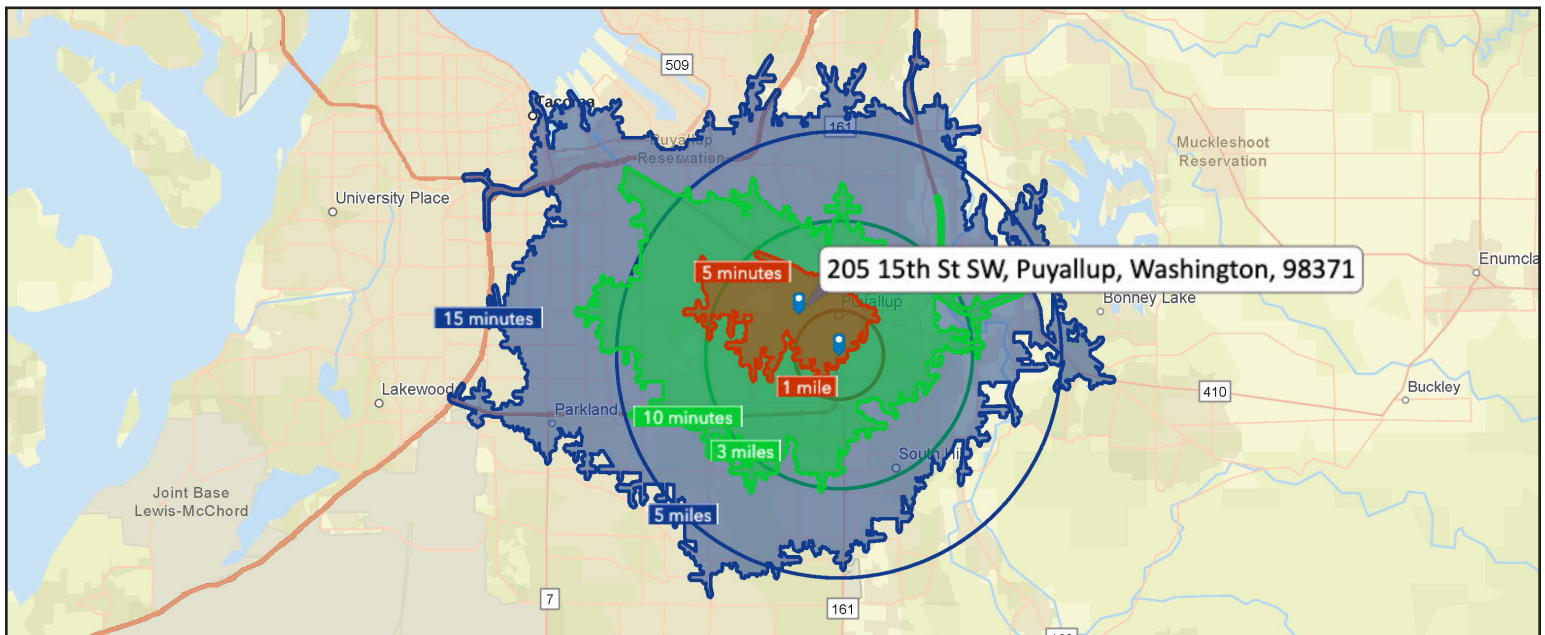
DEMOGRAPHICS

2021 Population	1 Mile	3 Miles	5 Miles
	11,637	76,393	162,253
2021 Household Income	1 Mile	3 Miles	5 Miles
	\$64,289	\$78,894	\$84,292

REGIONAL MAP



TRAVEL TIME MAP

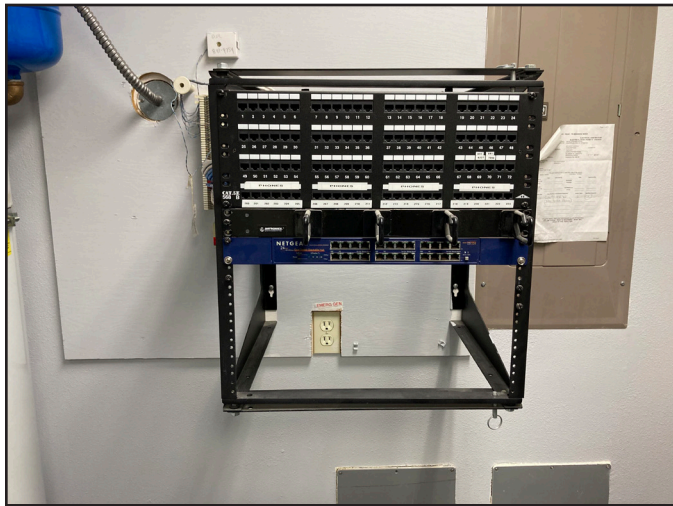


11120 Gravelly Lake Dr SW Ste 2
Lakewood, Washington 98499
johnson-commercial.com

Timothy Johnson
timothy@johnson-commercial.com
(253) 209-9999



INTERIOR PHOTOS

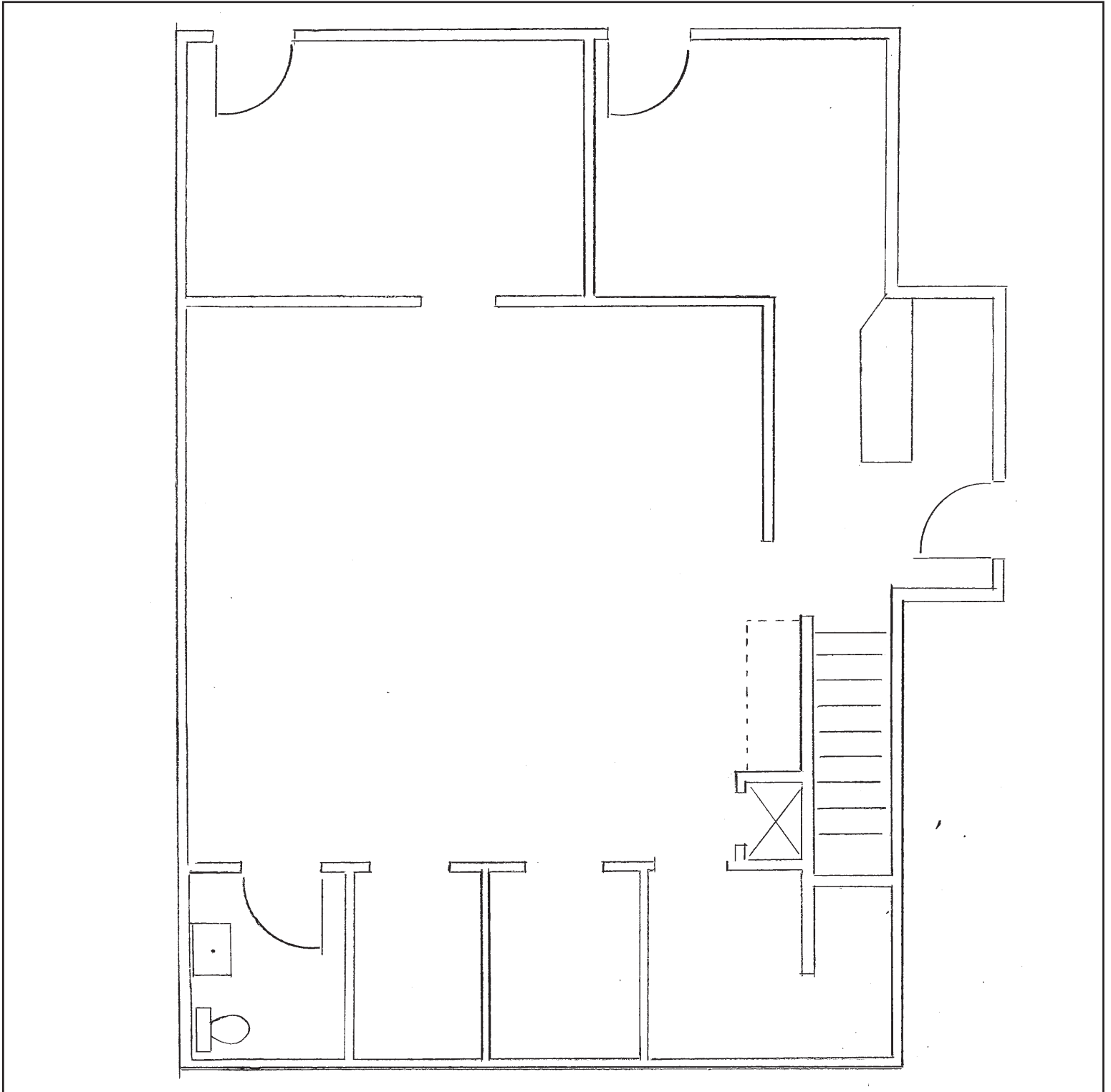


11120 Gravelly Lake Dr SW Ste 2
Lakewood, Washington 98499
johnson-commercial.com

Timothy Johnson
timothy@johnson-commercial.com
(253) 209-9999



FLOOR PLAN - First Floor





FLOOR PLAN - Second Floor

