



NORTHRUP BUILDING

405 S. 8TH STREET, BOISE, ID 83702

OFFICE

FOR LEASE



PROPERTY HIGHLIGHTS

- Available immediately
- 2-5 years lease term
- Negotiable T.I. Allowance
- Public parking nearby

PROPERTY INFORMATION:

Available SF: **566 - 2,936 SF**

Lease Rate: **\$15.90 - 16.50 SF/yr**

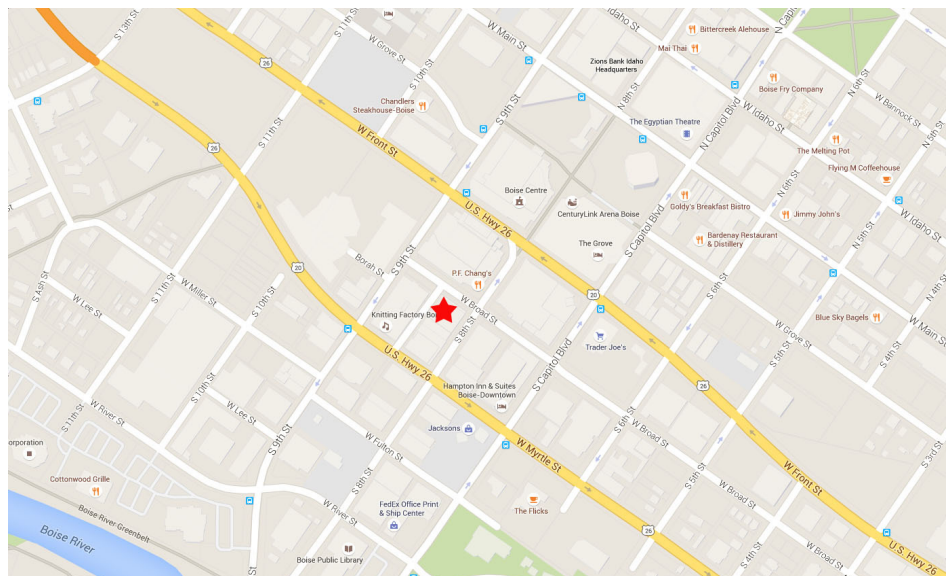
Lease Type: **Full Service; MG**

Building Size: **47,143 SF**

Building Class: **B**

Market: **Downtown Boise**

SPACE	SIZE (SF)	LEASE RATE
Suite 202	566 SF	\$750 PER MONTH
Suite 250	2,370 - 2,936 SF	\$16.50 SF/YR
Suite 255	1,564 SF	\$16.50 SF/YR



INTERMOUNTAIN
COMMERCIAL REAL ESTATE

380 E. Parkcenter Boulevard
Suite 290
Boise, ID 83706
www.icrellc.com
(208) 429.8603 / office / (208) 429-8604 fax

LISTING AGENT:

Wendy Shoemaker
wendy@icrellc.com
o / 208.285.2611
c / 208.859.2816



NORTHROP BUILDING

405 S. 8TH STREET, BOISE, ID 83702

EXECUTIVE SUMMARY



OFFERING SUMMARY

Available SF: 566 - 2,936 SF

Lease Rate: \$15.90 - 16.50 SF/yr
(Full Service; MG)

Building Size: 47,143 SF

Building Class: B

Market: Downtown Boise

PROPERTY OVERVIEW

Lots of character and charm with functional and creative floor plans, exposed brick, spacious common area and architectural details.

PROPERTY HIGHLIGHTS

- Available immediately
- 2-5 years lease term
- Negotiable T.I. Allowance
- Public parking nearby
- Great historic building in 8th Street Marketplace

OFFICE



INTERMOUNTAIN
COMMERCIAL REAL ESTATE

380 E. Parkcenter Boulevard
Suite 290
Boise, ID 83706
www.icrellc.com
(208) 429.8603 / office / (208) 429-8604 fax

LISTING AGENT:

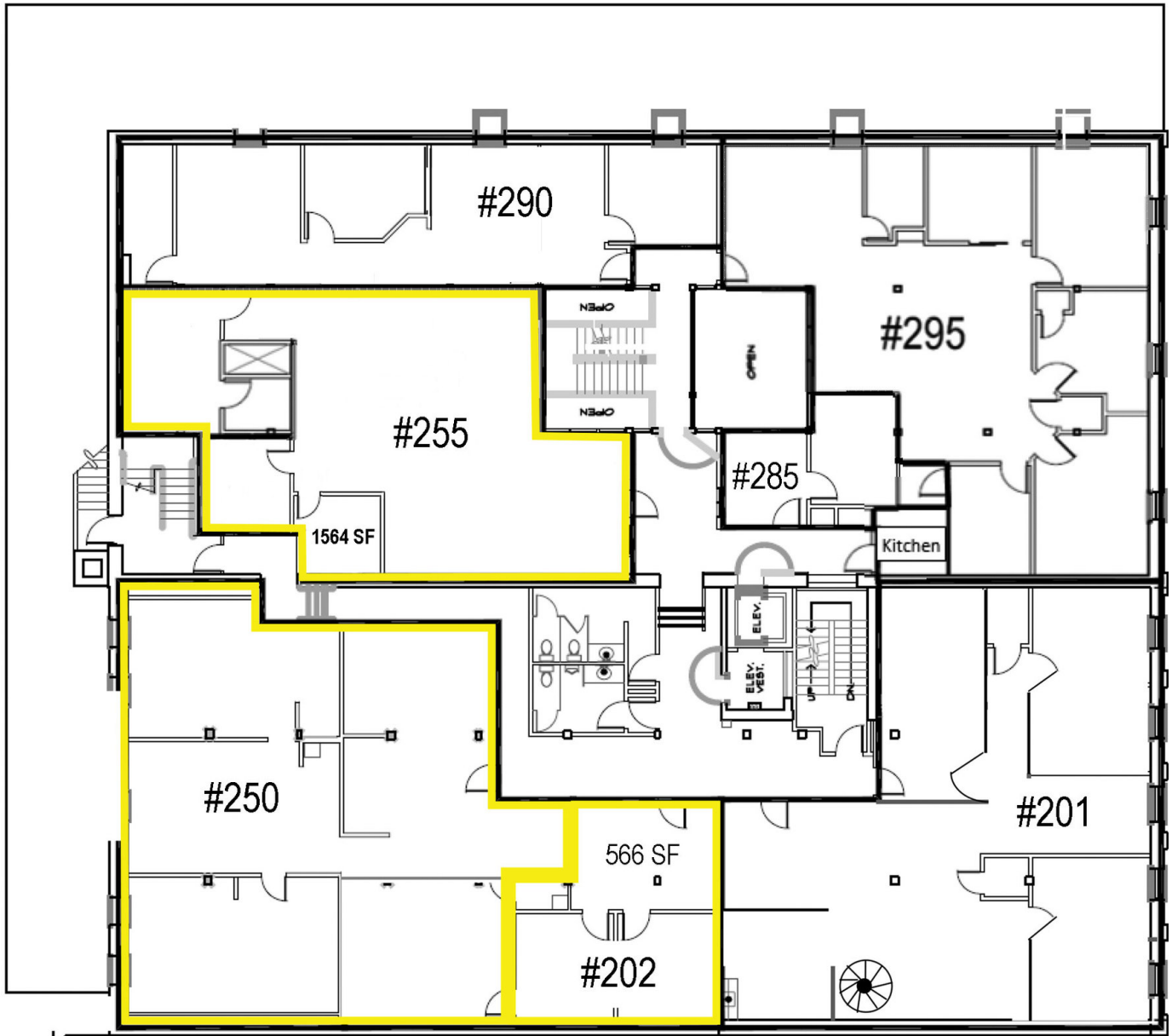
Wendy Shoemaker
wendy@icrellc.com
o / 208.285.2611
c / 208.859.2816



NORTHRUP BUILDING

405 S. 8TH STREET, BOISE, ID 83702

SECOND FLOOR PLAN



OFFICE



INTERMOUNTAIN
COMMERCIAL REAL ESTATE

380 E. Parkcenter Boulevard
Suite 290
Boise, ID 83706
www.icrellc.com
(208) 429.8603 / office / (208) 429-8604 fax

LISTING AGENT:

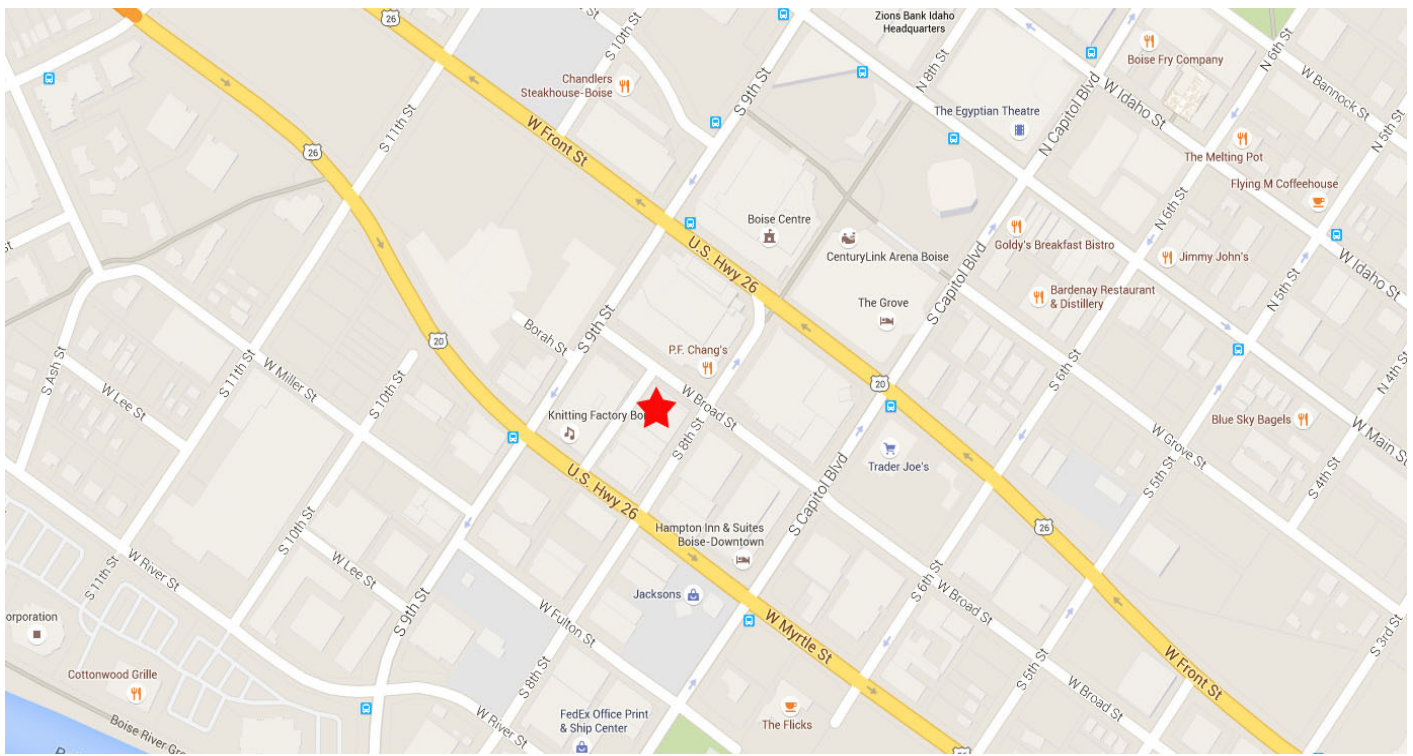
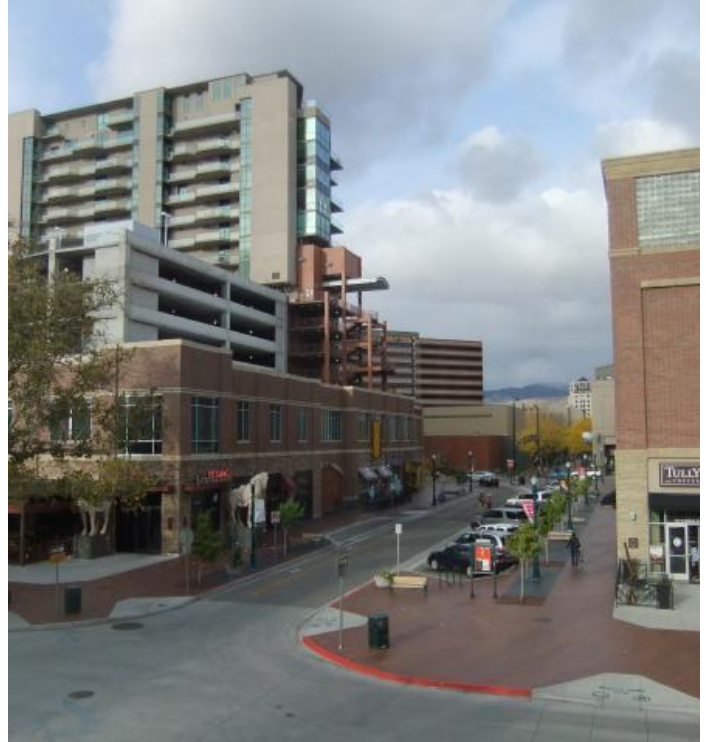
Wendy Shoemaker
wendy@icrellc.com
o / 208.285.2611
c / 208.859.2816



NORTHROP BUILDING

405 S. 8TH STREET, BOISE, ID 83702

ADDITIONAL PHOTOS



OFFICE



INTERMOUNTAIN
COMMERCIAL REAL ESTATE

380 E. Parkcenter Boulevard
Suite 290
Boise, ID 83706
www.icrell.com
(208) 429.8603 / office / (208) 429-8604 fax

LISTING AGENT:

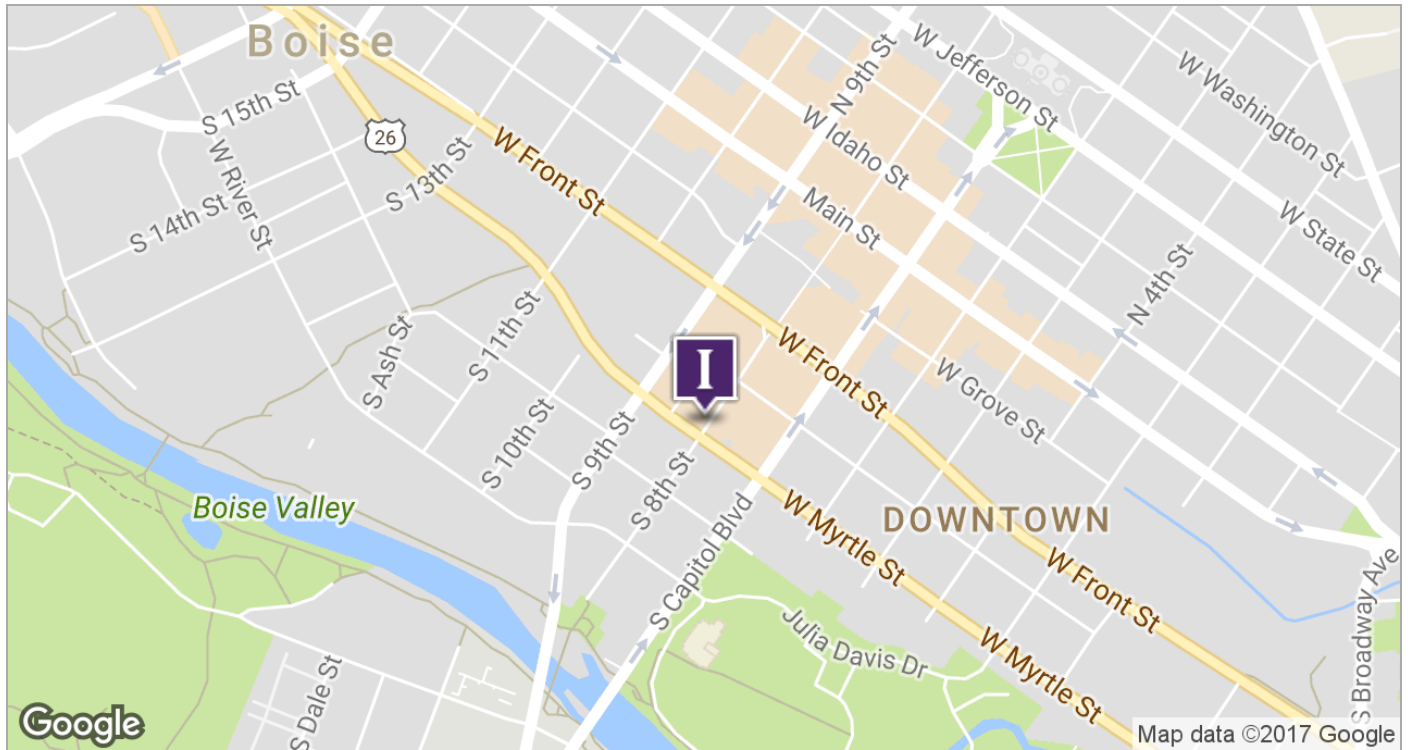
Wendy Shoemaker
wendy@icrell.com
o / 208.285.2611
c / 208.859.2816



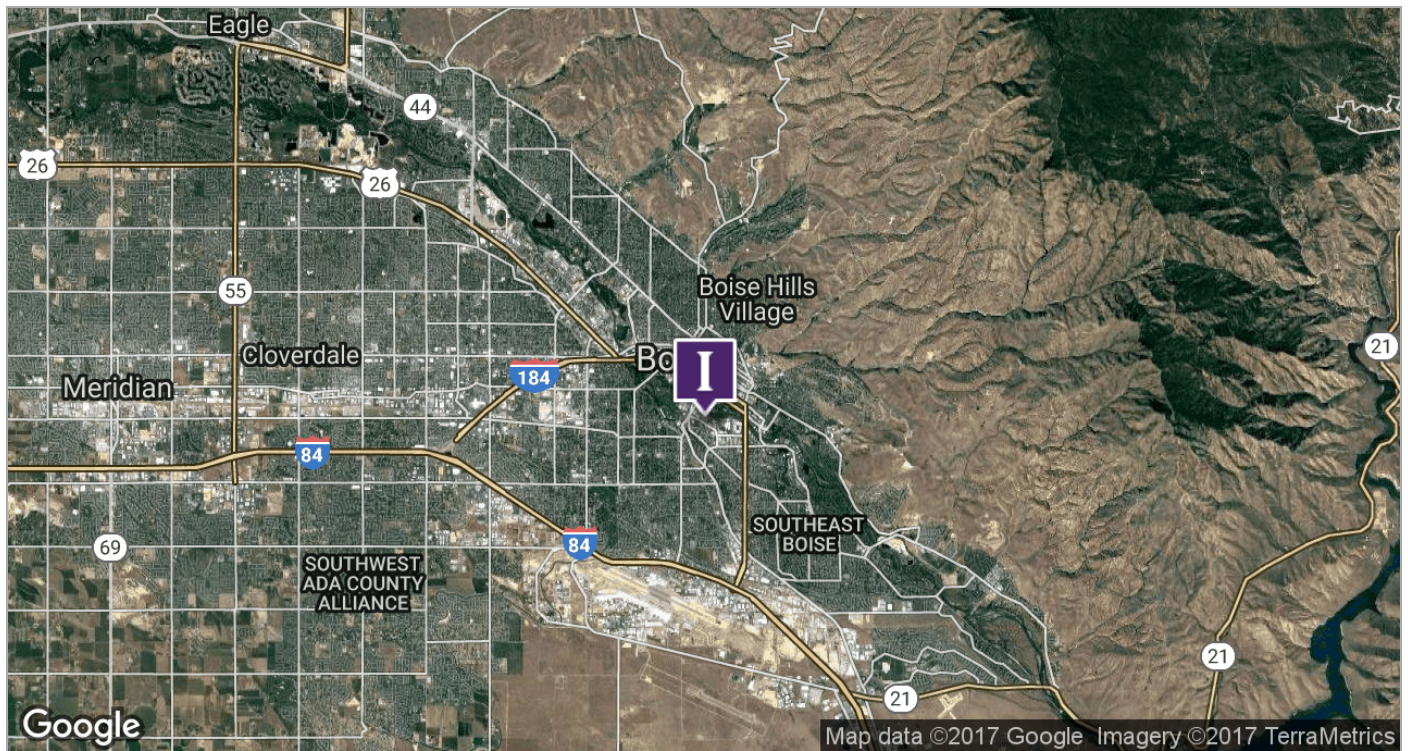
NORTHRUP BUILDING

405 S. 8TH STREET, BOISE, ID 83702

LOCATION MAPS



OFFICE



INTERMOUNTAIN
COMMERCIAL REAL ESTATE

380 E. Parkcenter Boulevard
Suite 290
Boise, ID 83706
www.icrell.com
(208) 429.8603 / office / (208) 429-8604 fax

LISTING AGENT:

Wendy Shoemaker
wendy@icrell.com
o / 208.285.2611
c / 208.859.2816