

# Clean Commerical/Light Industrial Space For Lease

5130 Fulton Drive / Units P + Q

Fairfield, CA



## Multi-Tenant Office/Warehouse For Lease ±5,020 Rentable Square Feet Available

As exclusive agents, we are pleased to offer the following space:

### PROPERTY HIGHLIGHTS

- ◆ ±5,020 SF Available
- ◆ ±1,170 SF of Office Improvements, more available to suit
- ◆ Two (2) Grade Level Doors (12' x 14')
- ◆ 200 amps, 120/208v, 3-Phase Electrical
- ◆ Fully Sprinklered and Insulated Throughout
- ◆ 22' Ceiling Clearance in Warehouse
- ◆ 360° Access Around Building
- ◆ Ample Parking


### COMMENTS

Clean, modern units available from ±2,510 square feet. Located in Cordelia with easy access to I-80, I-680 and Hwy 12. Ample parking, attractive glass lines and high ceilings make this building a best-in-class property in the North I-680 corridor.

**Tyler Epting** Managing Director 925.974.0238 [tepting@ngkf.com](mailto:tepting@ngkf.com) CA RE License #01317533

**Graden Travis** Senior Managing Director 925.974.0104 [gtravis@ngkf.com](mailto:gtravis@ngkf.com) CA RE License #00871716

**Kris Hagar** Associate 925.974.0119 [khagar@ngkf.com](mailto:khagar@ngkf.com) CA RE License #02009499

 **Newmark Knight Frank** 1333 N. California Blvd, Suite 343, Walnut Creek, CA 94596 [www.industrialeastbay.com](http://www.industrialeastbay.com)

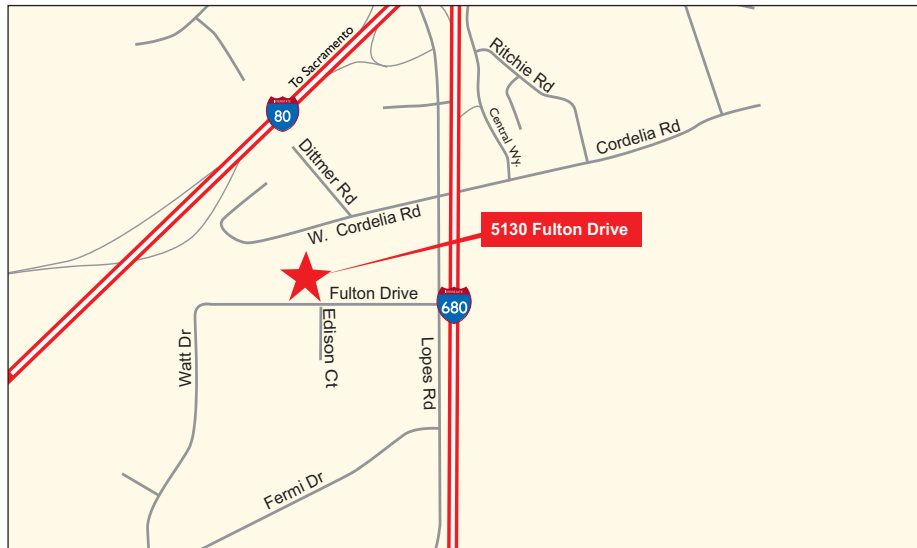
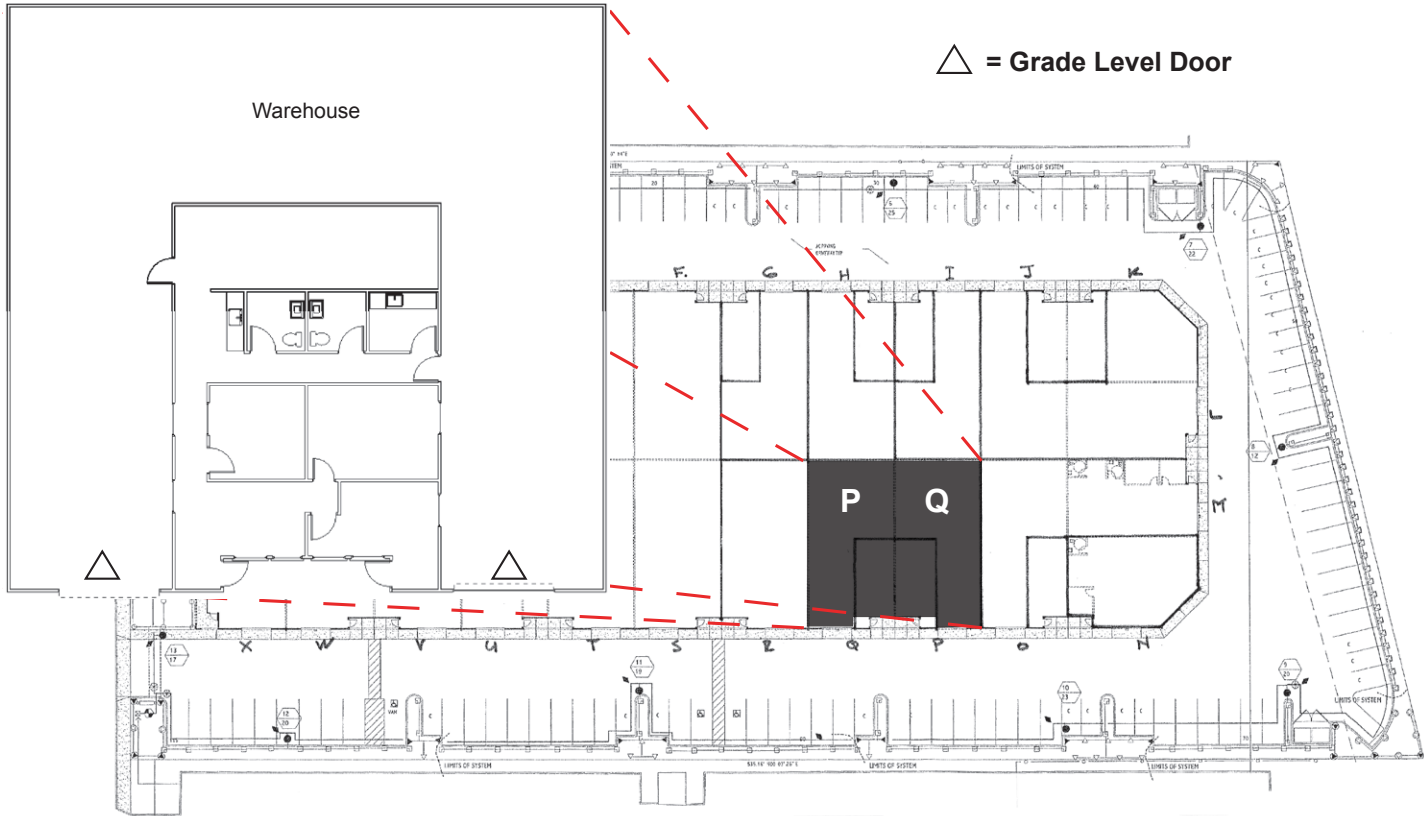
The distributor of this communication is performing acts for which a real estate license is required. The information contained herein has been obtained from sources deemed reliable but has not been verified and no guarantee, warranty or representation, either express or implied, is made with respect to such information. Terms of sale or lease and availability are subject to change or withdrawal without notice.

09-1949-11/18

# Clean Commerical/Light Industrial Space For Lease

5130 Fulton Drive / Units P + Q


Fairfield, CA



**Tyler Epting** Manging Director 925.974.0238 [tepting@ngkf.com](mailto:tepting@ngkf.com) CA RE License #01317533

**Graden Travis** Senior Managing Director 925.974.0104 [gtravis@ngkf.com](mailto:gtravis@ngkf.com) CA RE License #00871716

**Kris Hagar** Associate 925.974.0119 [khagar@ngkf.com](mailto:khagar@ngkf.com) CA RE License #02009499

 **Newmark Knight Frank** 1333 N. California Blvd, Suite 343, Walnut Creek, CA 94596 [www.industrialeastbay.com](http://www.industrialeastbay.com)

The distributor of this communication is performing acts for which a real estate license is required. The information contained herein has been obtained from sources deemed reliable but has not been verified and no guarantee, warranty or representation, either express or implied, is made with respect to such information. Terms of sale or lease and availability are subject to change or withdrawal without notice.

09-1949-11/18