



BURNHAM DRIVE COMMERCIAL PARK

10421 Burnham Drive NW, Gig Harbor, WA 98332

**FOR
LEASE**



LISA TALLMAN

(253) 741-5504

lisa@firstwesternproperties.com

First Western Properties - Tacoma, Inc.

6402 Tacoma Mall Blvd, Tacoma, WA 98409

P (253) 472 - 0404 F (253) 472 - 0541

© First Western Properties - Tacoma, Inc. DISCLAIMER: The above information has been secured from sources believed to be reliable, however, no representations are made to its accuracy. Prospective tenants or buyers should consult their professional advisors and conduct their own independent investigation. Properties are subject to change in price and/or availability without notice.

www.fwp-inc.com

BURNHAM DRIVE COMMERCIAL PARK

10421 Burnham Drive NW, Gig Harbor, WA 98332

**FOR
LEASE**

LOCATION DETAILS

- Centrally located in Gig Harbor
- Excellent access to Highway 16
- Traffic counts: 4,000 (Burnham Dr.)



NOW AVAILABLE- PHASE II (EARLY 2015)

- 15,000 square feet
- Dock high grade level doors
- Lease rate for warehouse \$0.60 per sf, NNN
- NNN's estimated at \$0.15 per sf
- Designed for space size flexibility
- 50' bay depths

Property Highlights

- Nice professional business park
- Excellent accessibility to Highway 16

DEMOGRAPHICS	Mile 1	Mile 3	Mile 5
Population	2,731	20,666	44,861
Average HH Income	\$120,571	\$99,358	\$96,839
Daytime Population	2,941	17,540	31,735



First Western Properties - Tacoma, Inc.
6402 Tacoma Mall Blvd, Tacoma, WA 98409
P (253) 472 - 0404 F (253) 472 - 0541

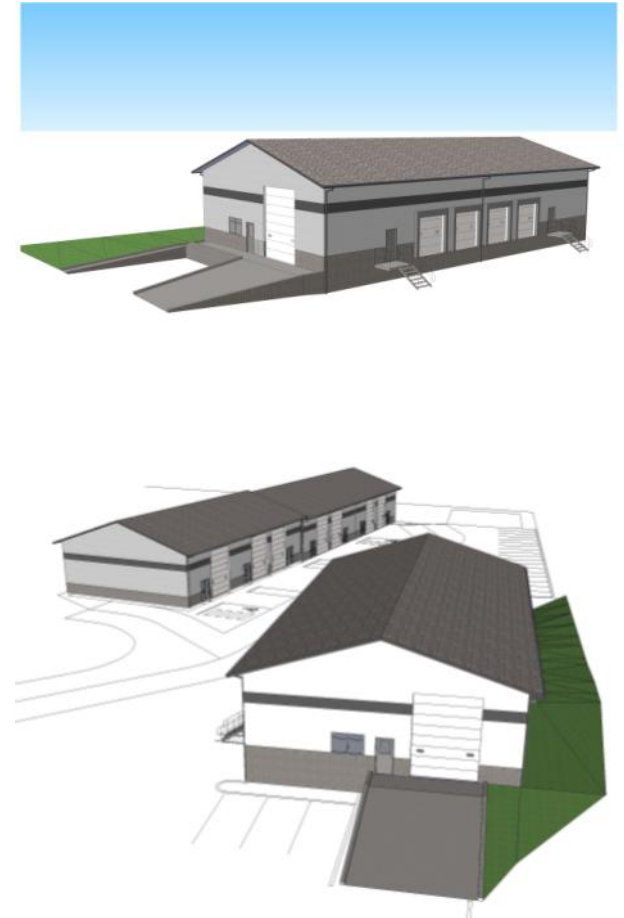
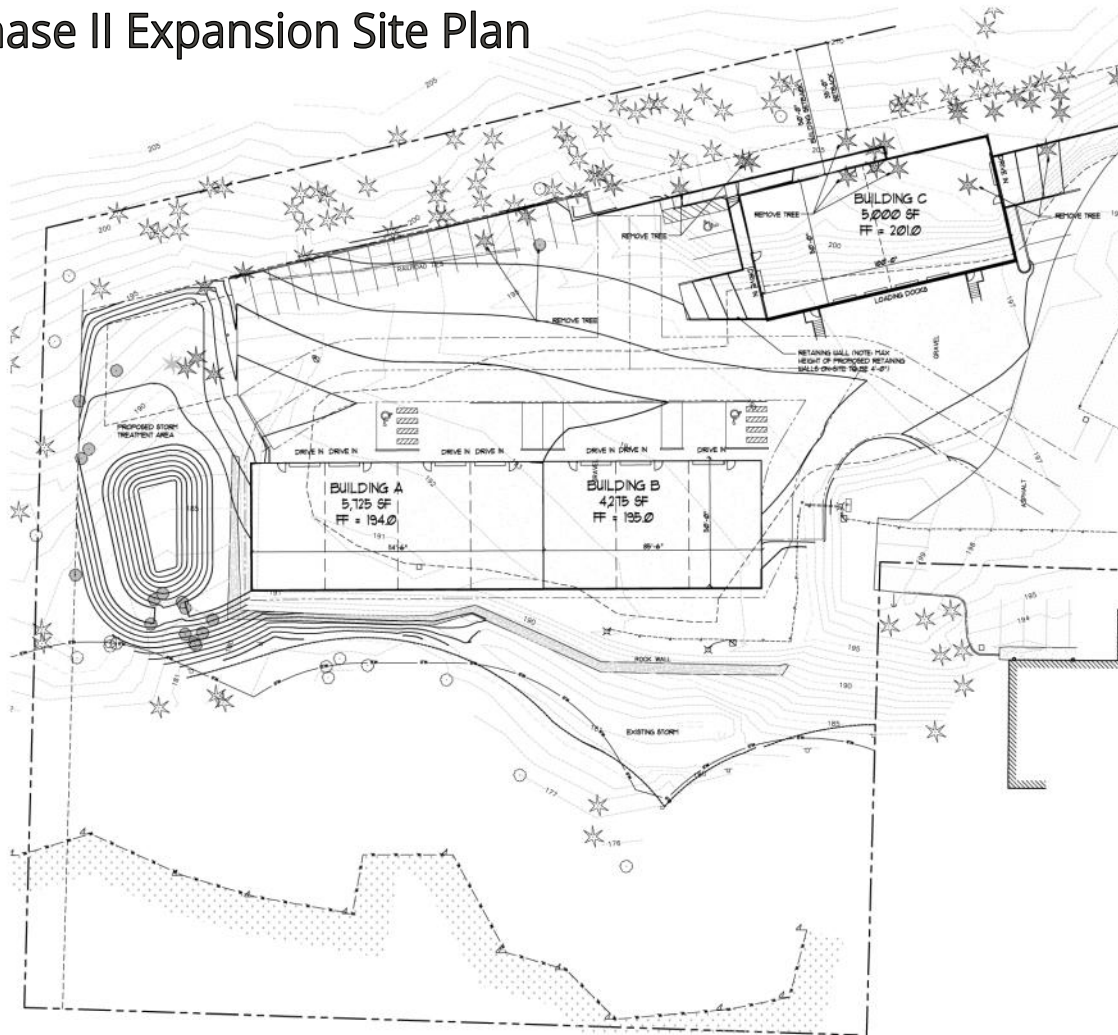
www.fwp-inc.com

BURNHAM DRIVE COMMERCIAL PARK

10421 Burnham Drive NW, Gig Harbor, WA 98332

FOR
LEASE

Phase II Expansion Site Plan



First Western Properties - Tacoma, Inc.
6402 Tacoma Mall Blvd, Tacoma, WA 98409
P (253) 472 - 0404 F (253) 472 - 0541

www.fwp-inc.com

BURNHAM DRIVE COMMERCIAL PARK

10421 Burnham Drive NW, Gig Harbor, WA 98332

FOR
LEASE



First Western Properties - Tacoma, Inc.
6402 Tacoma Mall Blvd, Tacoma, WA 98409
P (253) 472 - 0404 F (253) 472 - 0541

www.fwp-inc.com