

MATEO

ARTS DISTRICT, LA

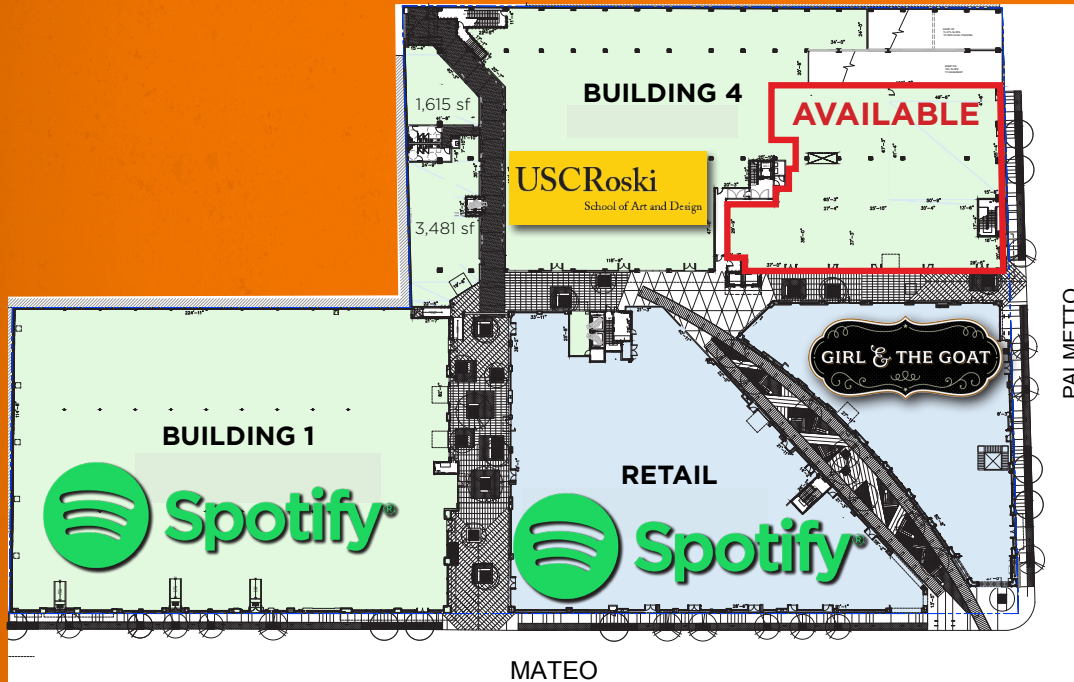
# MATEO

LIMITED AVAILABILITY REMAINING

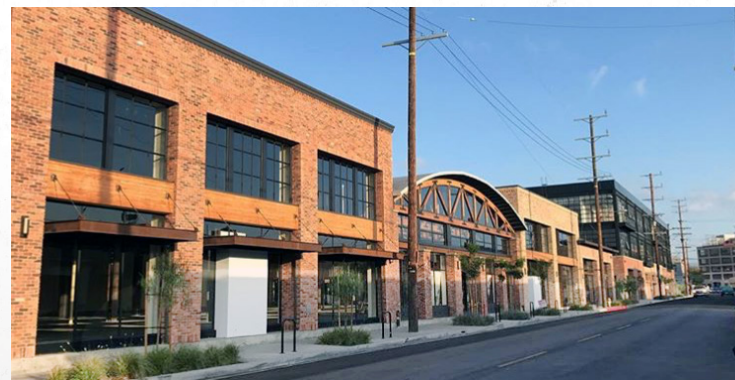


CUSHMAN &  
WAKEFIELD

# 7,000 - 15,000 SF PREMIER CREATIVE SPACE AVAILABLE FOR LEASE



- Located at the heart of Downtown's most talked about community
- Newly constructed above standard parking (3/1,000 ratio)
- Fully amenitized with curated restaurants, boutiques and local services
- Efficient floor plates with a load factor of only 11%
- Vast ceilings, mezzanine potential and floor-to-ceiling glass
- Adjacent to Zinc Café and Barker Block
- Beautiful organic finishes including reclaimed wood, steel beams, repurposed cobblestone and original red brick from James Dean's High School
- Beautiful Rios-designed landscaping and green space
- Pet friendly environment
- Wifi throughout



**ANDREW D. TASHJIAN**  
213.955.5148  
Andrew.Tashjian@cushwake.com  
Lic. #01867711

**MIKE CONDON, JR.**  
213.629.7379  
Mike.Condon@cushwake.com  
Lic. #01884476

**PETER B. COLLINS**  
310.595.2227  
Peter.Collins@cushwake.com  
Lic. #01813645

