



PREMIER GREENWICH VILLAGE OFFICE SPACE FOR LEASE

# 14 EAST 4TH STREET

— THE SILK BUILDING —

Between Broadway and Lafayette Street, New York, NY

## For Lease

Partial 4th Floor: 1,623 RSF

**Base Rent:** \$10,750/month

**Electric:** \$450/month

**Escalations:** 3.0% per annum

**Cleaning:** Tenant's expense

## Stunning Existing Installation including

- Four glass enclosed private offices, glass conference room, pantry, private restroom, reception and open area
- High, exposed ceilings and large, operable windows
- New tenant controlled, central air-conditioning system

## Building Features

- Ideally located in the heart of Greenwich Village and Noho
- Gorgeous marble lobby which is attended 24/7
- Close proximity to the 6, N, R, B, D, F & M trains
- Steps from Lafayette Restaurant, La Colombe, Broken Coconut, SoulCycle, Washington Square Park and the Bowery and Standard Hotels

[WWW.RUDDERPG.COM/14E4TH](http://WWW.RUDDERPG.COM/14E4TH)

All information supplied is from sources deemed reliable and is furnished subject to errors, omissions, modifications, removal of the listing from sale, and to any listing conditions, including the prices. Floor plan represents only an approximation of the size and perimeter of the Unit(s). Details, including but not limited to, partitions and furniture shown hereon, are for demonstration purposes only and do not reflect existing conditions, which likely vary from the conditions shown hereon. Any square footage dimensions set forth are estimates based on approximate rentable measurements.

## Michael Rudder

Office: (212) 966-3611

Mobile: (646) 483-2203

[mrudder@rudderpg.com](mailto:mrudder@rudderpg.com)

## Michael Heller

Office: (212) 966-3622

Mobile: (917) 439-2198

[mheller@rudderpg.com](mailto:mheller@rudderpg.com)



## Rudder Property Group

36 West 44th Street

Suite 1411

New York, NY 10036

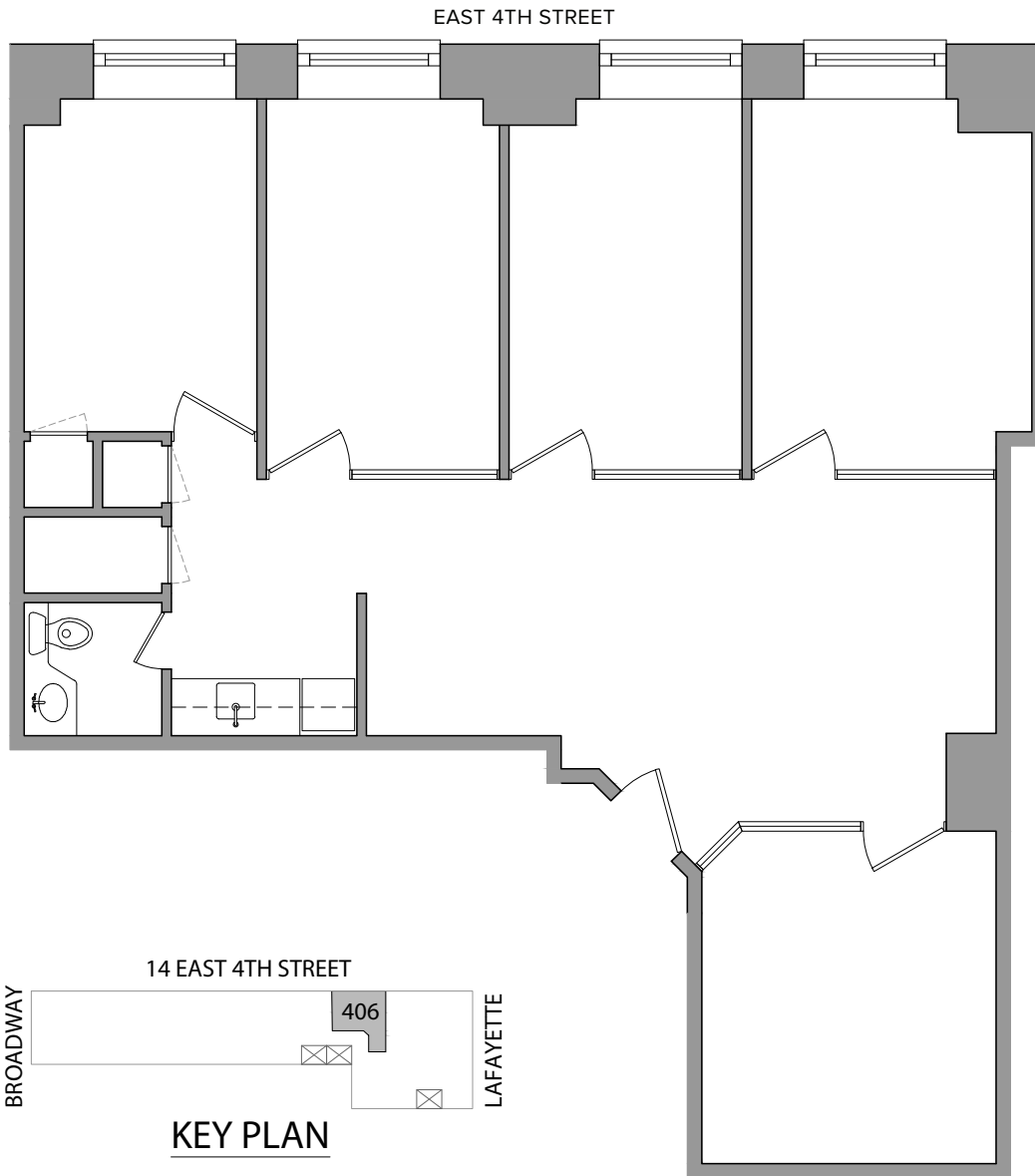
[www.rudderpg.com](http://www.rudderpg.com)

PREMIER GREENWICH VILLAGE OFFICE SPACE FOR LEASE

# 14 EAST 4TH STREET

THE SILK BUILDING

Between Broadway and Lafayette Street, New York, NY



[WWW.RUDDERPG.COM/14E4TH](http://WWW.RUDDERPG.COM/14E4TH)

All information supplied is from sources deemed reliable and is furnished subject to errors, omissions, modifications, removal of the listing from sale, and to any listing conditions, including the prices. Floor plan represents only an approximation of the size and perimeter of the Unit(s). Details, including but not limited to, partitions and furniture shown hereon, are for demonstration purposes only and do not reflect existing conditions, which likely vary from the conditions shown hereon. Any square footage dimensions set forth are estimates based on approximate rentable measurements.

**Michael Rudder**

Office: (212) 966-3611  
Mobile: (646) 483-2203  
mrudder@rudderpg.com

**Michael Heller**

Office: (212) 966-3622  
Mobile: (917) 439-2198  
mheller@rudderpg.com



**Rudder Property Group**

36 West 44th Street  
Suite 1411  
New York, NY 10036  
www.rudderpg.com