



KEY FEATURES

- Class A Medical space
- New construction
- Estimated completion Q1 2021
- ±2,000 - 4,000 SF (one or two suites)
- Fully customizable to suit your needs
- Heart of Lewisville
- Easy access to US 421
- 5.25:1,000 parking ratio
- Contact brokers for pricing information

LEARN MORE ABOUT THIS PROPERTY

KURT BIRKINS

Kurt@commercialrealtync.com
336.793.0890, ext 204

JEFF ANDREWS

Jeff@commercialrealtync.com
336.793.0890, ext 102

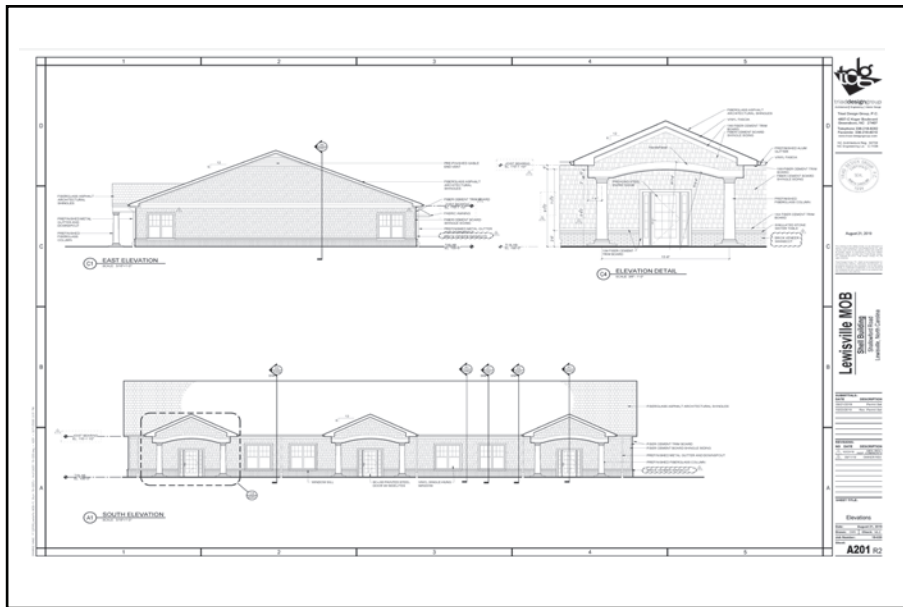
CLASS A MEDICAL OFFICE

FOR LEASE

LEWISVILLE MEDICAL PARK

6721 Shallowford Road
Lewisville, NC 27023

Here's your opportunity to start a new practice or move your existing one into this brand new Class A medical office space in the heart of Lewisville! This beautifully-designed and well-constructed building, scheduled to be completed in the first quarter of 2021, has ±4,000 SF that can either be used for a single practice or divided into two separate ±2,000 SF office suites. This great location includes 34 parking spaces and provides easy access to US 421, Salem Parkway and I40. Contact brokers for pricing information.



LEWISVILLE MEDICAL PARK

LOCATION

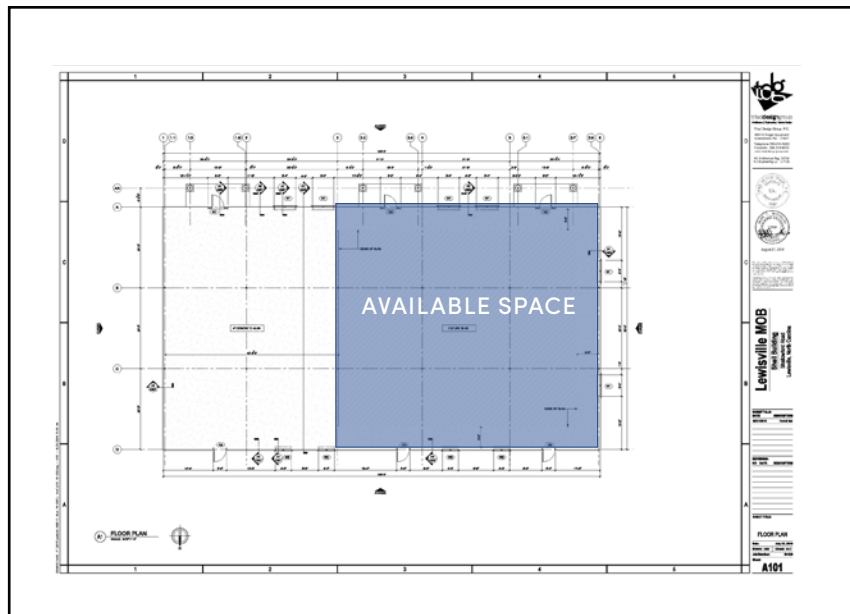
Address	6721 Shallowford Road	City/State	Lewisville/NC	Zip	27023
County	Forsyth				

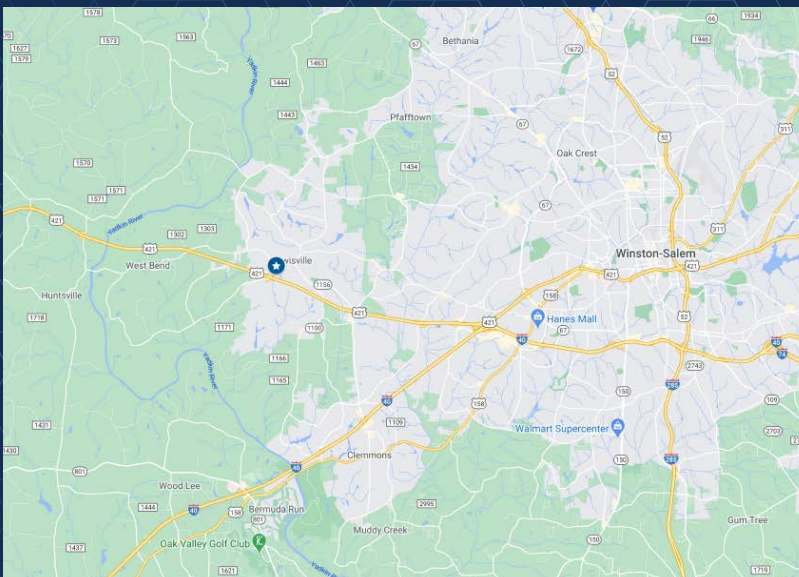
PROPERTY DETAILS

Property Type	Medical Office	Acres ±	1.23	Available SF ±	2,000 - 4,000
Floors	1	Parking ±	34 spaces	Building SF ±	6,480
Year Built	2021 (Q1 Completion)				

TAX & PRICING INFORMATION

Tax Pin	5875-86+4543	Lease Price	Contact Brokers	
----------------	--------------	--------------------	-----------------	--





LOCATION FEATURES

- Located in the heart of Lewisville
- Great location, easy access to US 421, Salem Parkway and I40