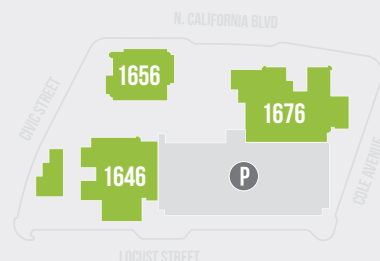


GROWERS square

walnut creek

1646, 1656 & 1676
N. CALIFORNIA BLVD

FLOOR PLANS



1646 N. CALIFORNIA

- SUITE 103 | ±2,654 RSF
 - SUITE 220 | ±3,534 RSF
 - SUITE 330* | ±1,236 RSF
 - SUITE 342* | ±1,691 RSF
 - SUITE 420 | ±3,683 RSF
 - SUITE 510 | ±5,681 RSF
 - SUITE 680 | ±3,128 RSF
- SUITES CAN BE COMBINED FOR 2,927 RSF

1676 N. CALIFORNIA

- SUITE 205** | ±2,699 RSF
 - SUITE 210** | ±3,765 RSF
 - SUITE 250** | ±2,087 RSF
 - SUITE 400 | ±4,157 RSF
 - SUITE 550 | ±2,639 RSF
- SUITES CAN BE COMBINED FOR 8,551 RSF

→ *SUITES 330+342 - 2,927 RSF

→ **SUITES 205+210+250 - 8,551 RSF

GROWERS square

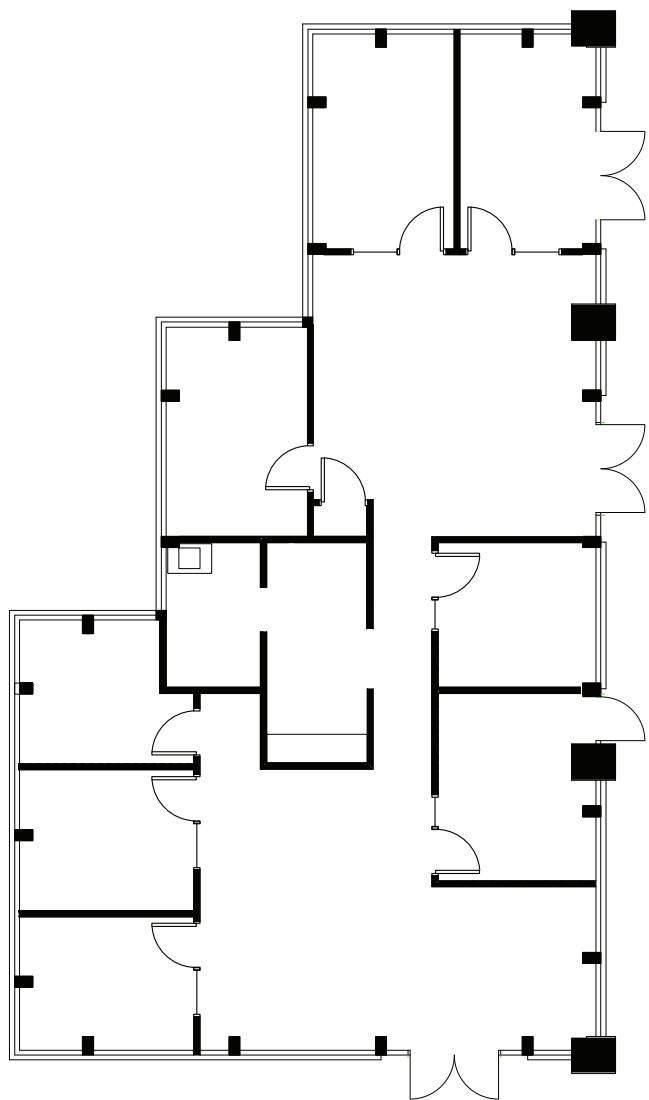
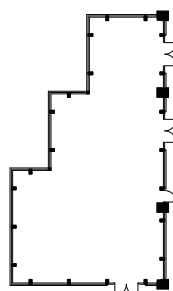
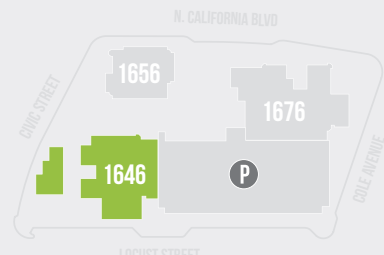
walnut creek

1646 N. CALIFORNIA

SUITE 103

±2,654 RSF

1646 N. CALIFORNIA BLVD



FLOOR PLAN



**Newmark
Knight Frank**

1333 N. CALIFORNIA BLVD., SUITE 343 | WALNUT CREEK, CA 94596

FOR MORE
INFORMATION

THE HEART OF WALNUT CREEK

BRECK LUTZ BLUTZ@NGKF.COM | 925.974.0109 | CA RE LICENSE #00936859
KNUTE BUCKLEW KBUCKLEW@NGKF.COM | 925.974.0240 | CA RE LICENSE #01332731
DANNY BARTZ DBARTZ@NGKF.COM | 925.974.0231 | CA RE LICENSE #01971819

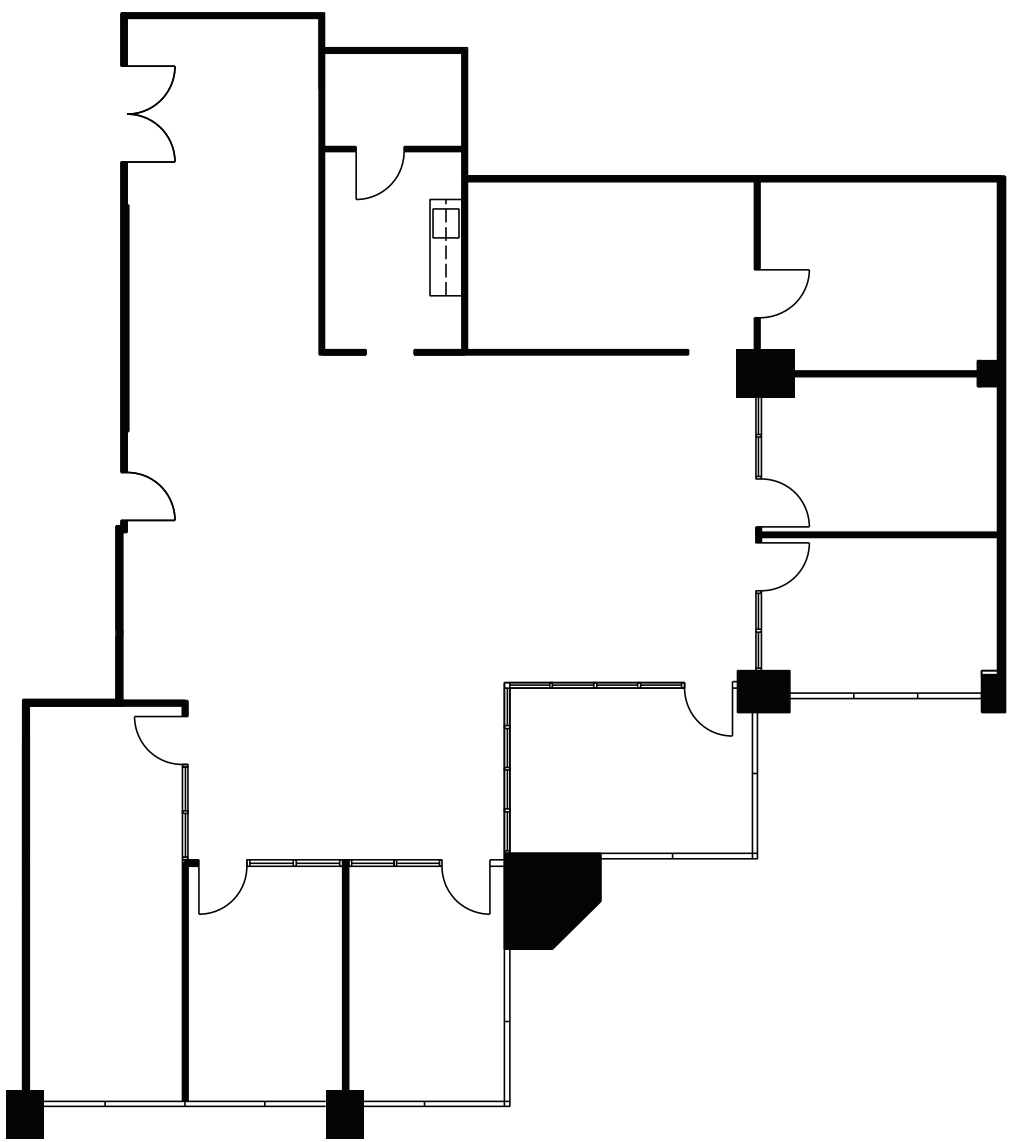
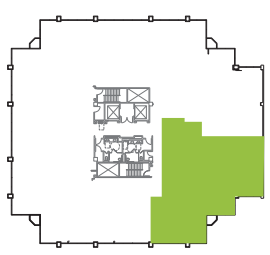
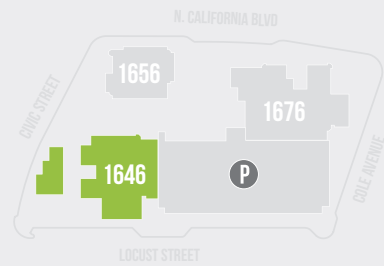
GROWERS square

walnut creek

1646 N. CALIFORNIA BLVD



1646 N. CALIFORNIA
SUITE 220
±3,534 RSF



FLOOR PLAN



**Newmark
Knight Frank**

1333 N. CALIFORNIA BLVD., SUITE 343 | WALNUT CREEK, CA 94596

FOR MORE
INFORMATION

THE HEART OF WALNUT CREEK

BRECK LUTZ BLUTZ@NGKF.COM | 925.974.0109 | CA RE LICENSE #00936859
KNUTE BUCKLEW KBUCKLEW@NGKF.COM | 925.974.0240 | CA RE LICENSE #01332731
DANNY BARTZ DBARTZ@NGKF.COM | 925.974.0231 | CA RE LICENSE #01971819

GROWERS square

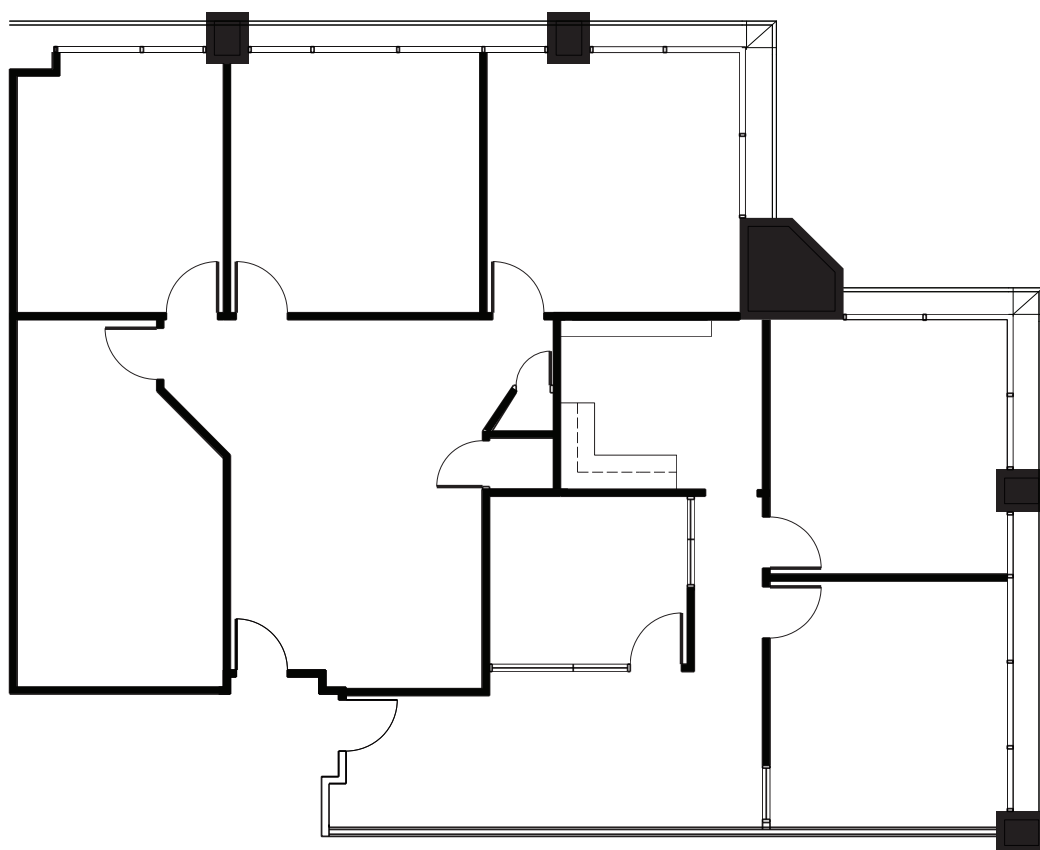
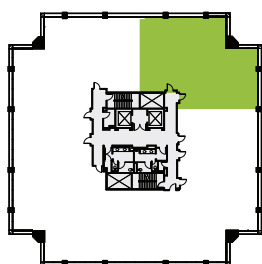
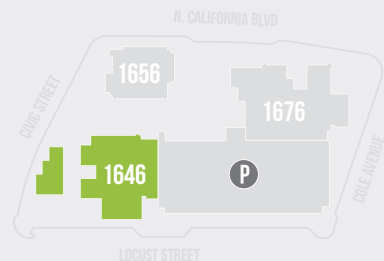
walnut creek

1646 N. CALIFORNIA

SUITE 330 + 342

±2,927 RSF

1646 N. CALIFORNIA BLVD



FLOOR PLAN



Newmark
Knight Frank

1333 N. CALIFORNIA BLVD., SUITE 343 | WALNUT CREEK, CA 94596

FOR MORE
INFORMATION

THE HEART OF WALNUT CREEK

BRECK LUTZ BLUTZ@NGKF.COM | 925.974.0109 | CA RE LICENSE #00936859
KNUTE BUCKLEW KBUCKLEW@NGKF.COM | 925.974.0240 | CA RE LICENSE #01332731
DANNY BARTZ DBARTZ@NGKF.COM | 925.974.0231 | CA RE LICENSE #01971819

GROWERS square

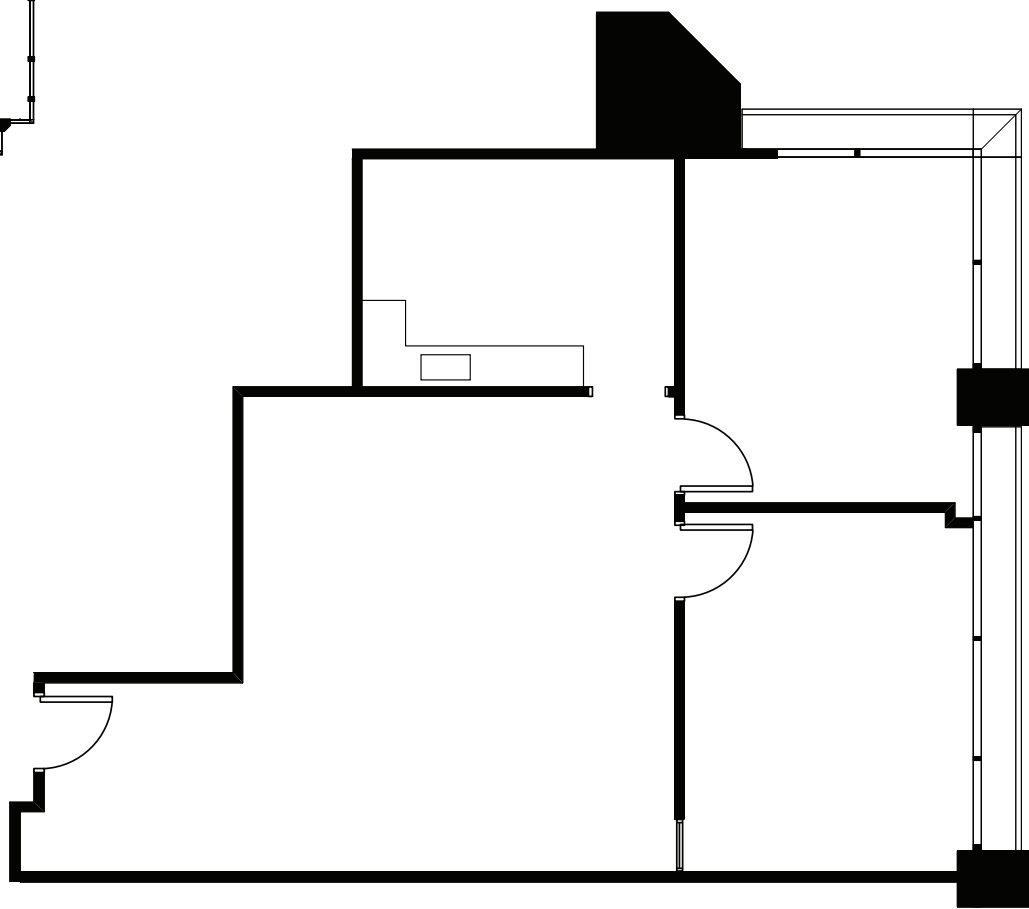
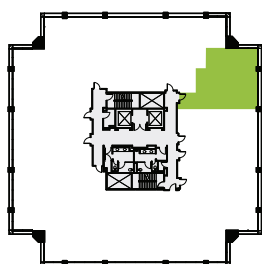
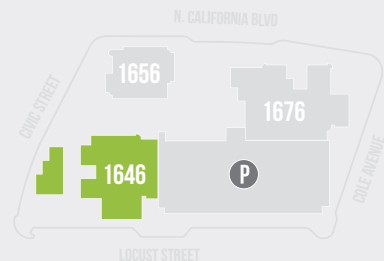
walnut creek

1646 N. CALIFORNIA

SUITE 330

±1,236 RSF

1646 N. CALIFORNIA BLVD



FLOOR PLAN



Newmark
Knight Frank

1333 N. CALIFORNIA BLVD., SUITE 343 | WALNUT CREEK, CA 94596

FOR MORE
INFORMATION

THE HEART OF WALNUT CREEK

BRECK LUTZ BLUTZ@NGKF.COM | 925.974.0109 | CA RE LICENSE #00936859
KNUTE BUCKLEW KBUCKLEW@NGKF.COM | 925.974.0240 | CA RE LICENSE #01332731
DANNY BARTZ DBARTZ@NGKF.COM | 925.974.0231 | CA RE LICENSE #01971819

GROWERS square

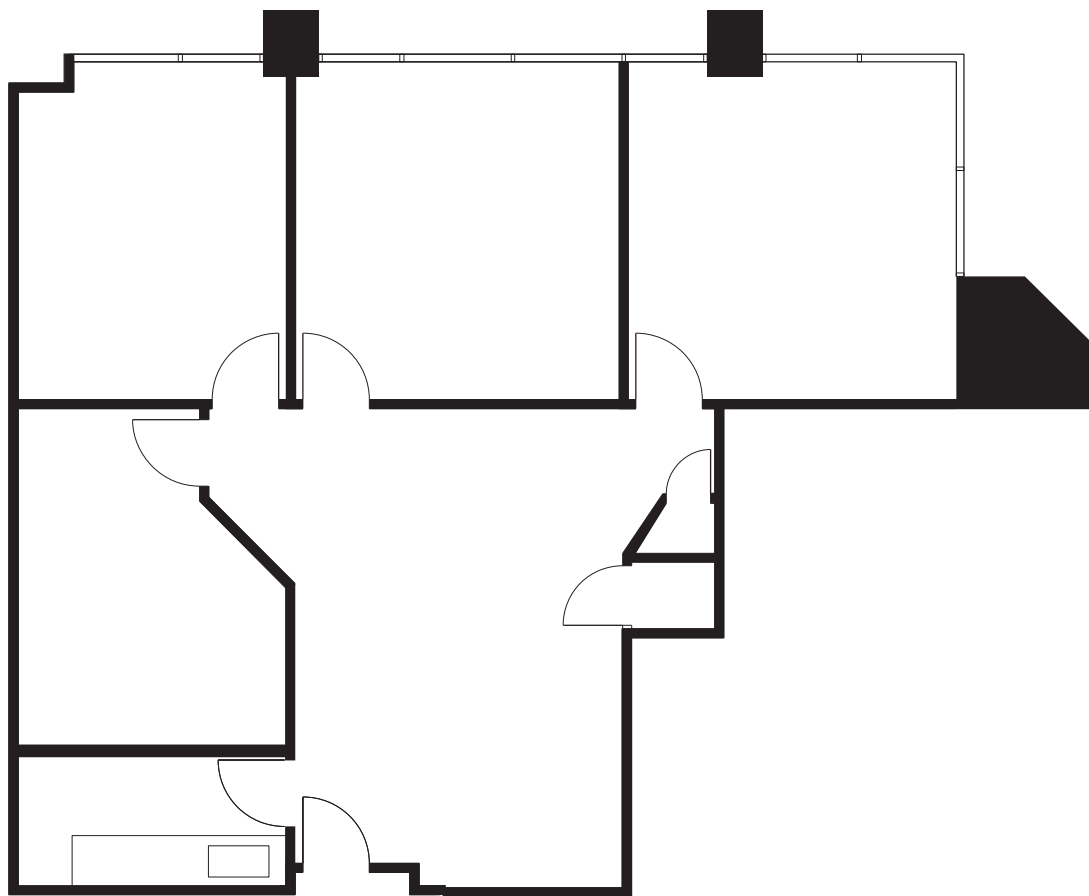
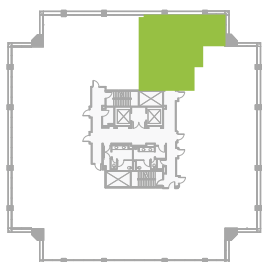
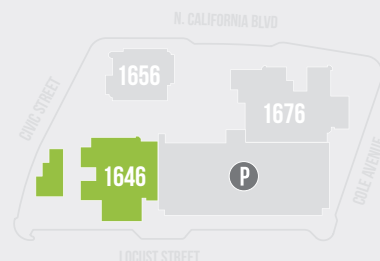
walnut creek

1646 N. CALIFORNIA

SUITE 342

±1,691 RSF

1646 N. CALIFORNIA BLVD



FLOOR PLAN



Newmark
Knight Frank

1333 N. CALIFORNIA BLVD., SUITE 343 | WALNUT CREEK, CA 94596

FOR MORE
INFORMATION

THE HEART OF WALNUT CREEK

BRECK LUTZ BLUTZ@NGKF.COM | 925.974.0109 | CA RE LICENSE #00936859
KNUTE BUCKLEW KBUCKLEW@NGKF.COM | 925.974.0240 | CA RE LICENSE #01332731
DANNY BARTZ DBARTZ@NGKF.COM | 925.974.0231 | CA RE LICENSE #01971819

GROWERS square

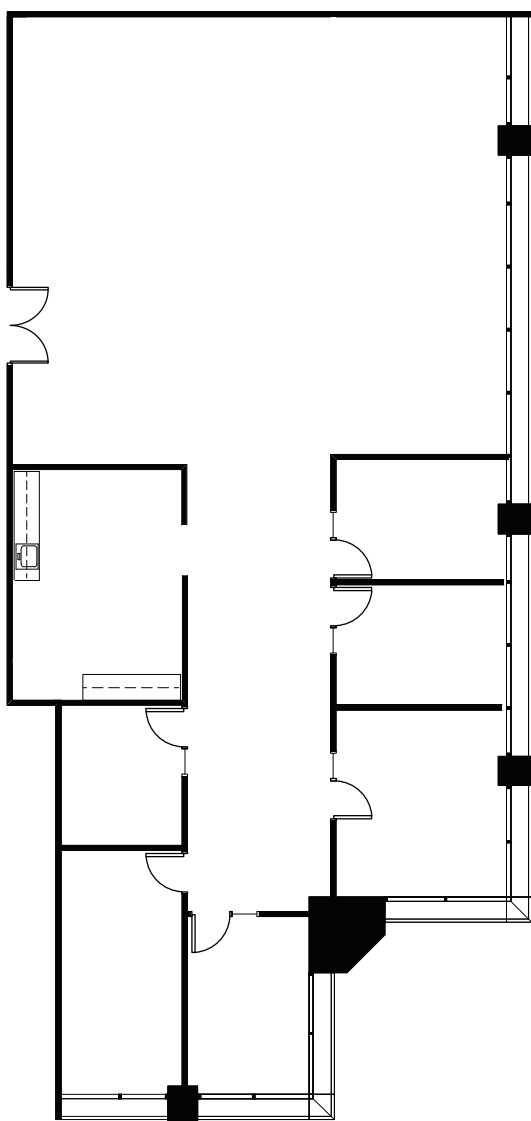
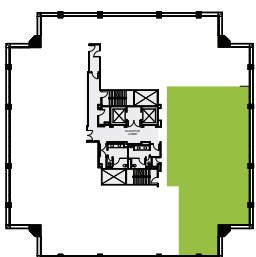
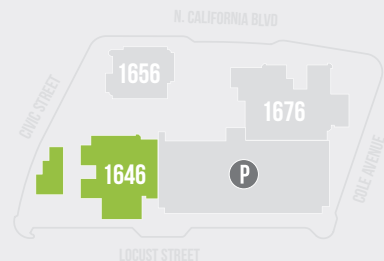
walnut creek

1646 N. CALIFORNIA

SUITE 420

±3,683 RSF

1646 N. CALIFORNIA BLVD



FLOOR PLAN



Newmark
Knight Frank

1333 N. CALIFORNIA BLVD., SUITE 343 | WALNUT CREEK, CA 94596

FOR MORE
INFORMATION

THE HEART OF WALNUT CREEK

BRECK LUTZ BLUTZ@NGKF.COM | 925.974.0109 | CA RE LICENSE #00936859
KNUTE BUCKLEW KBUCKLEW@NGKF.COM | 925.974.0240 | CA RE LICENSE #01332731
DANNY BARTZ DBARTZ@NGKF.COM | 925.974.0231 | CA RE LICENSE #01971819

GROWERS square

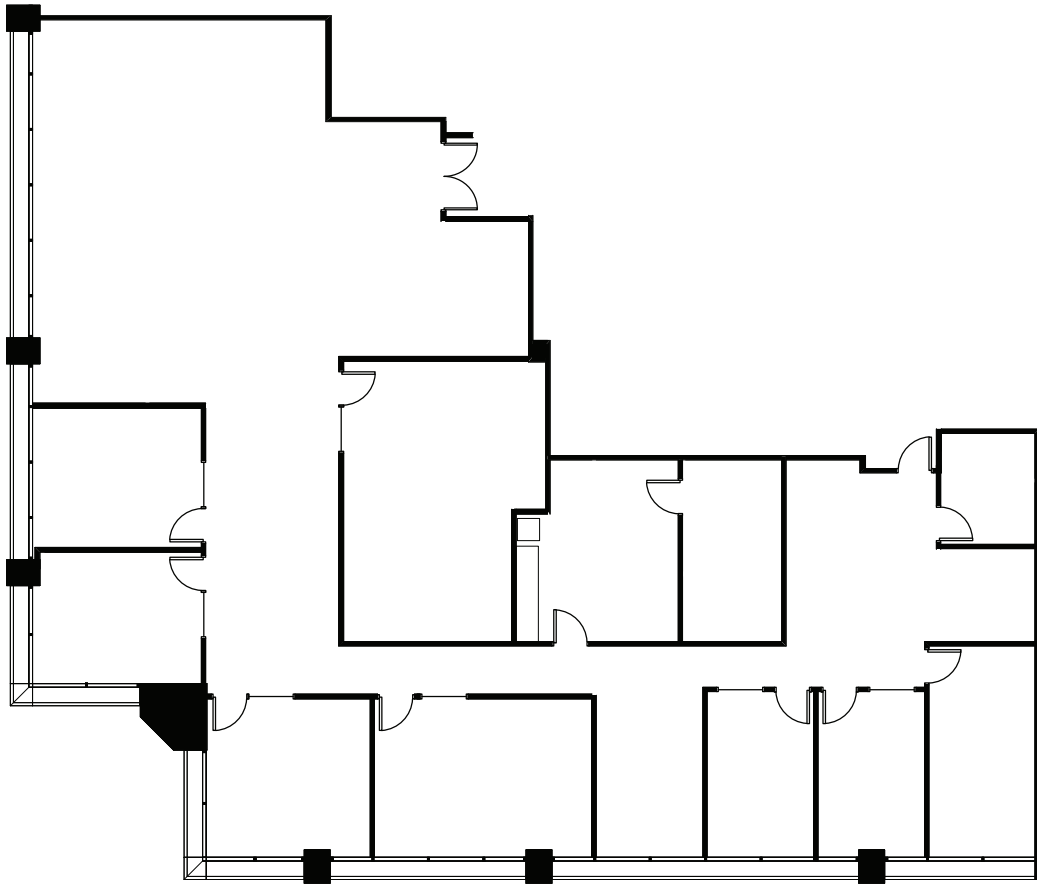
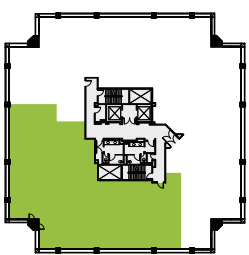
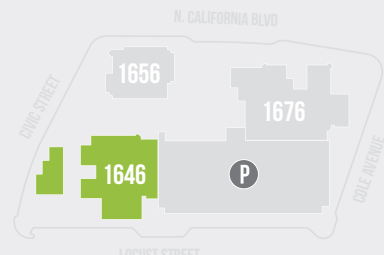
walnut creek

1646 N. CALIFORNIA

SUITE 510

±5,681 RSF

1646 N. CALIFORNIA BLVD



FLOOR PLAN



Newmark Knight Frank

1333 N. CALIFORNIA BLVD., SUITE 343 | WALNUT CREEK, CA 94596

FOR MORE INFORMATION

THE HEART OF WALNUT CREEK

BRECK LUTZ BLUTZ@NGKF.COM | 925.974.0109 | CA RE LICENSE #00936859
KNUTE BUCKLEW KBUCKLEW@NGKF.COM | 925.974.0240 | CA RE LICENSE #01332731
DANNY BARTZ DBARTZ@NGKF.COM | 925.974.0231 | CA RE LICENSE #01971819

GROWERS square

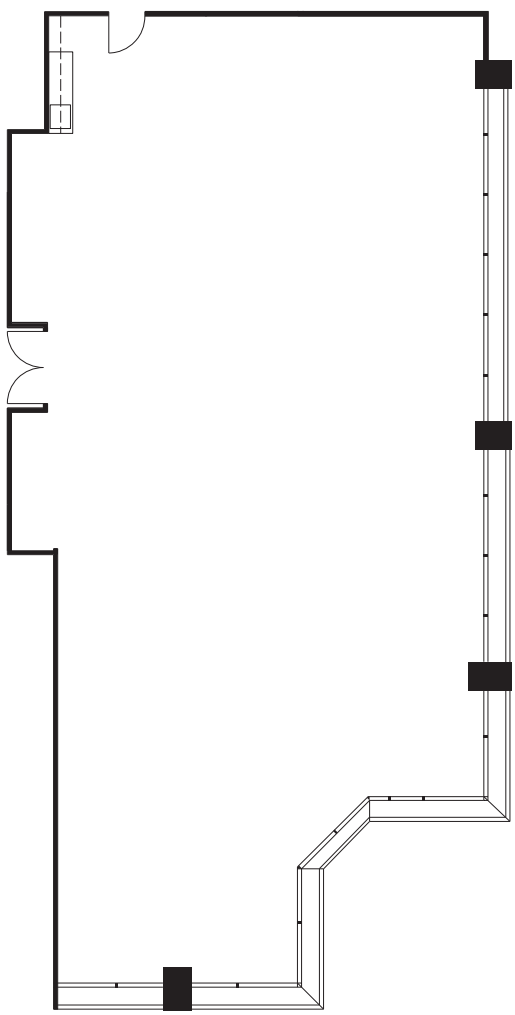
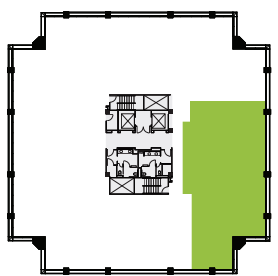
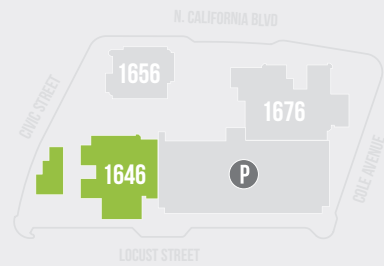
walnut creek

1646 N. CALIFORNIA

SUITE 680

±3,128 RSF

1646 N. CALIFORNIA BLVD



FLOOR PLAN



Newmark Knight Frank

1333 N. CALIFORNIA BLVD., SUITE 343 | WALNUT CREEK, CA 94596

FOR MORE INFORMATION

THE HEART OF WALNUT CREEK

BRECK LUTZ BLUTZ@NGKF.COM | 925.974.0109 | CA RE LICENSE #00936859
KNUTE BUCKLEW KBUCKLEW@NGKF.COM | 925.974.0240 | CA RE LICENSE #01332731
DANNY BARTZ DBARTZ@NGKF.COM | 925.974.0231 | CA RE LICENSE #01971819

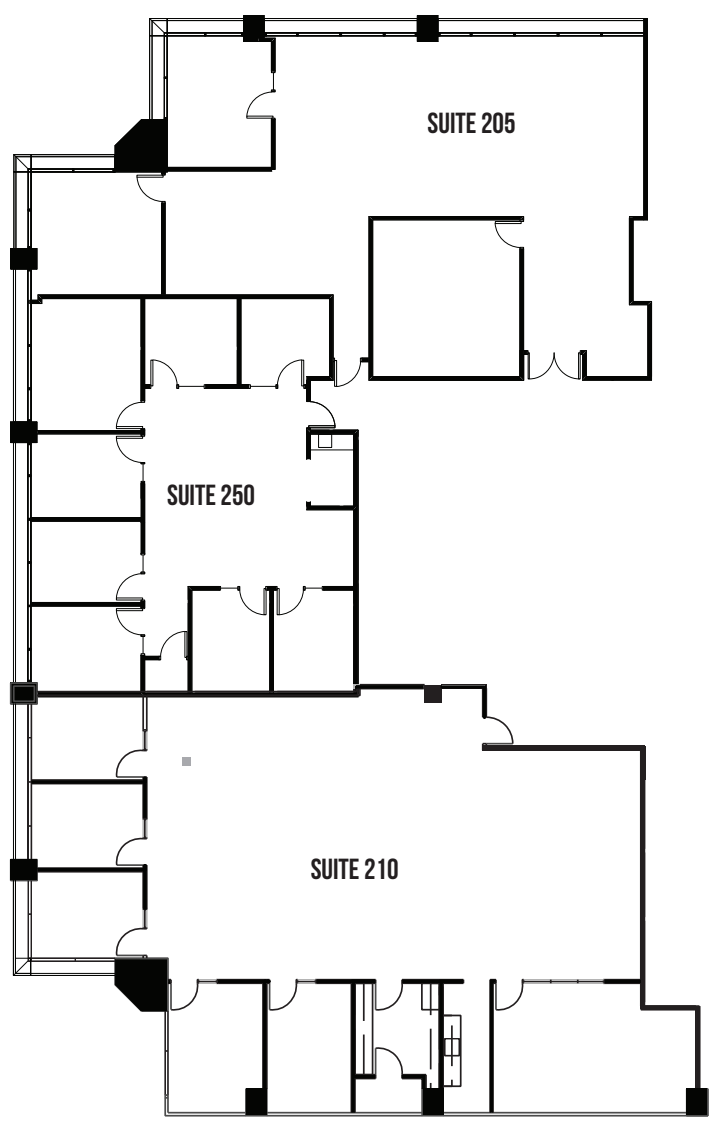
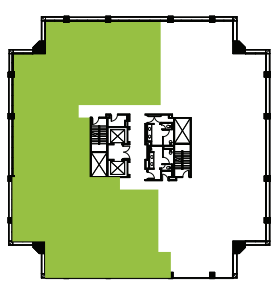
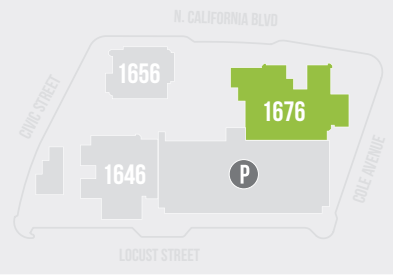
GROWERS square

walnut creek

1676 N. CALIFORNIA BLVD



1676 N. CALIFORNIA
SUITE 205 + 210 + 250
±8,551 RSF



FLOOR PLAN

 **Newmark Knight Frank**
1333 N. CALIFORNIA BLVD., SUITE 343 | WALNUT CREEK, CA 94596

FOR MORE INFORMATION

THE HEART OF WALNUT CREEK

BRECK LUTZ BLUTZ@NGKF.COM | 925.974.0109 | CA RE LICENSE #00936859
KNUTE BUCKLEW KBUCKLEW@NGKF.COM | 925.974.0240 | CA RE LICENSE #01332731
DANNY BARTZ DBARTZ@NGKF.COM | 925.974.0231 | CA RE LICENSE #01971819

GROWERS square

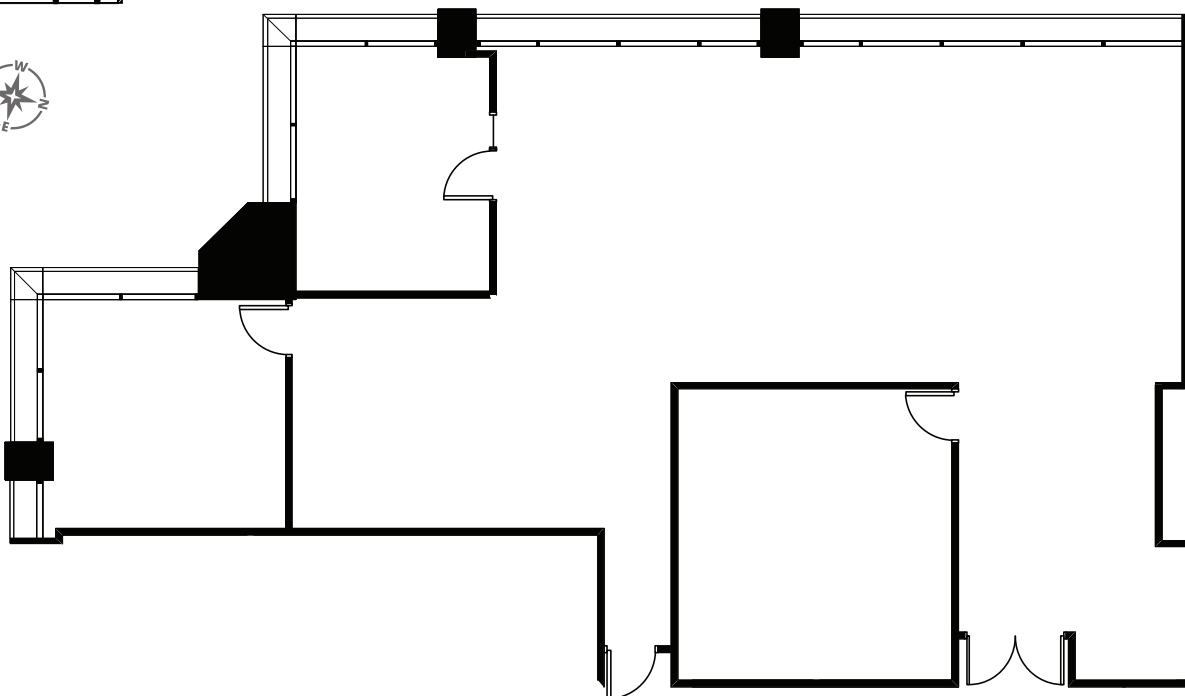
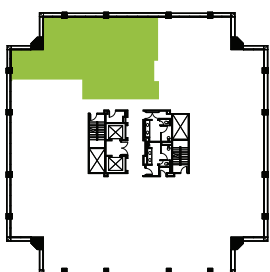
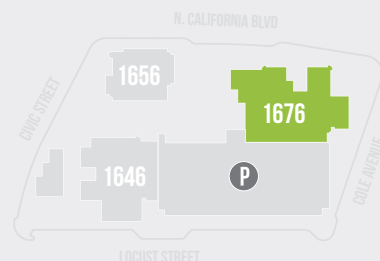
walnut creek

1676 N. CALIFORNIA

SUITE 205

±2,699 RSF

1676 N. CALIFORNIA BLVD



FLOOR PLAN



Newmark
Knight Frank

1333 N. CALIFORNIA BLVD., SUITE 343 | WALNUT CREEK, CA 94596

FOR MORE
INFORMATION

THE HEART OF WALNUT CREEK

BRECK LUTZ BLUTZ@NGKF.COM | 925.974.0109 | CA RE LICENSE #00936859
KNUTE BUCKLEW KBUCKLEW@NGKF.COM | 925.974.0240 | CA RE LICENSE #01332731
DANNY BARTZ DBARTZ@NGKF.COM | 925.974.0231 | CA RE LICENSE #01971819

GROWERS square

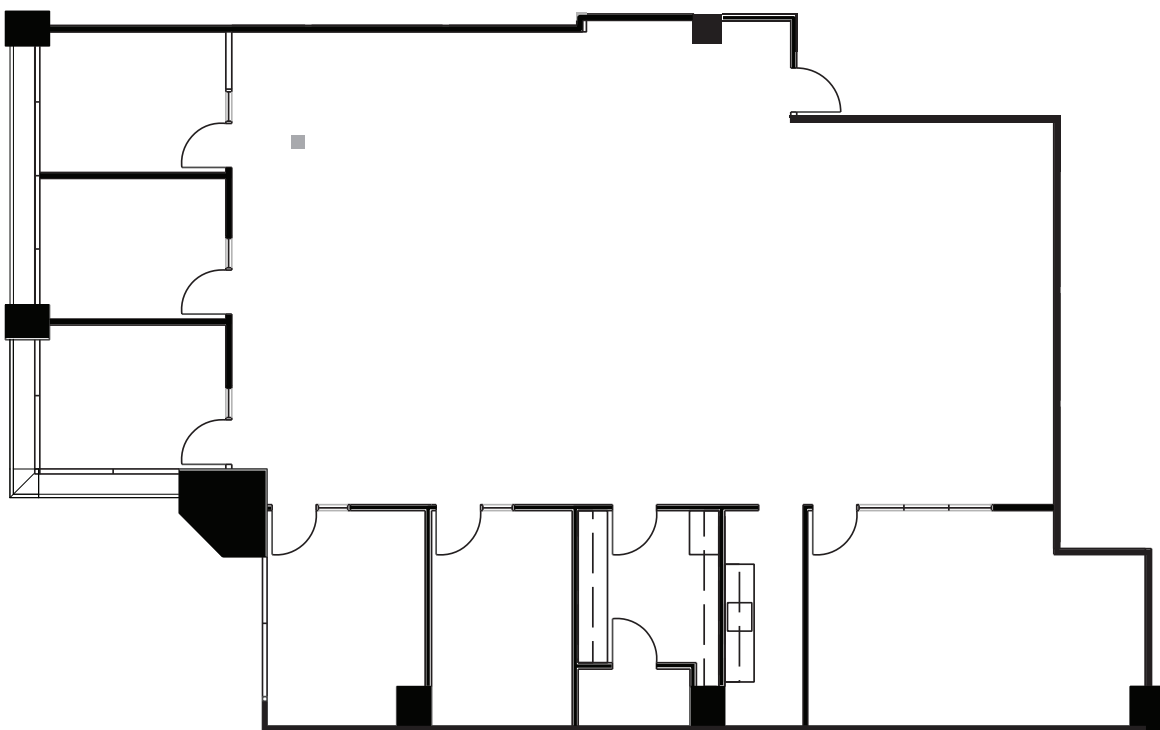
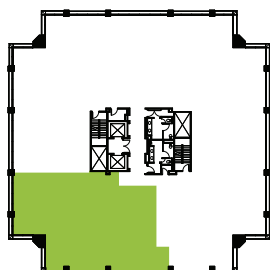
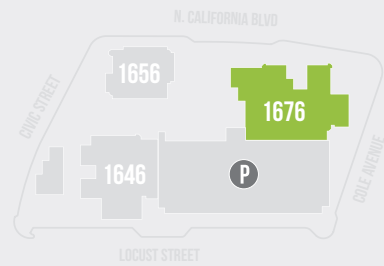
walnut creek

1676 N. CALIFORNIA

SUITE 210

±3,765 RSF

1676 N. CALIFORNIA BLVD



FLOOR PLAN



Newmark Knight Frank

1333 N. CALIFORNIA BLVD., SUITE 343 | WALNUT CREEK, CA 94596

FOR MORE INFORMATION

THE HEART OF WALNUT CREEK

BRECK LUTZ BLUTZ@NGKF.COM | 925.974.0109 | CA RE LICENSE #00936859
KNUTE BUCKLEW KBUCKLEW@NGKF.COM | 925.974.0240 | CA RE LICENSE #01332731
DANNY BARTZ DBARTZ@NGKF.COM | 925.974.0231 | CA RE LICENSE #01971819

GROWERS square

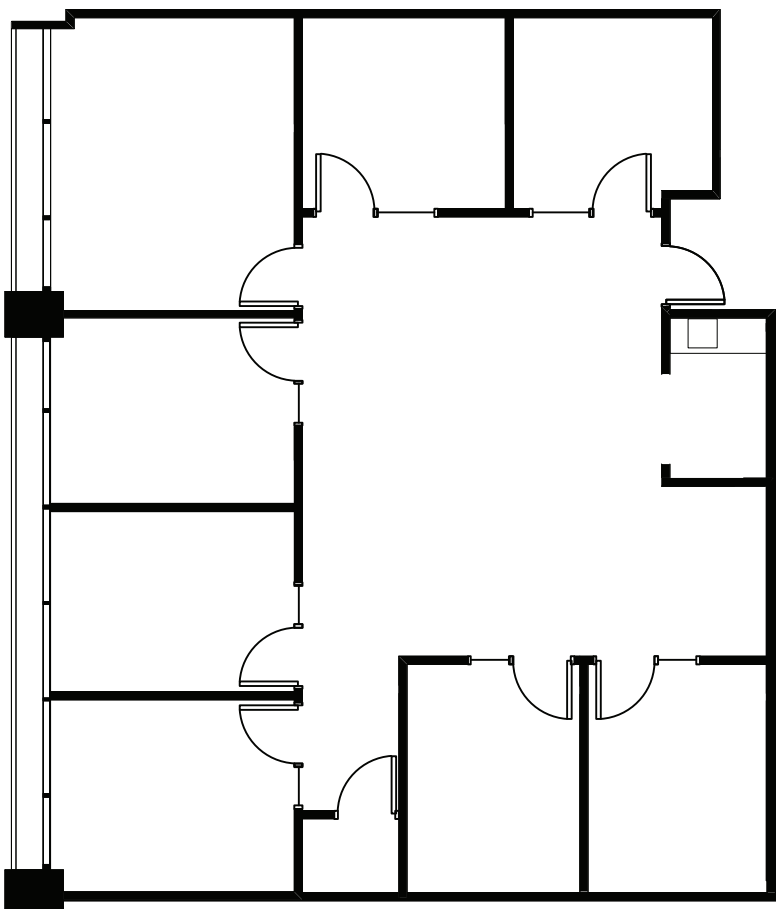
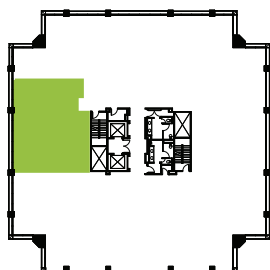
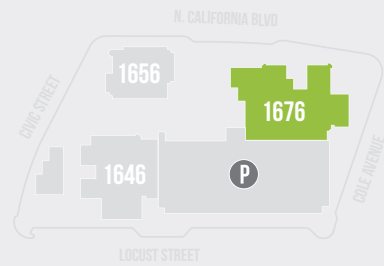
walnut creek

1676 N. CALIFORNIA

SUITE 250

±2,087 RSF

1676 N. CALIFORNIA BLVD



FLOOR PLAN

THE HEART OF WALNUT CREEK

GROWERS square

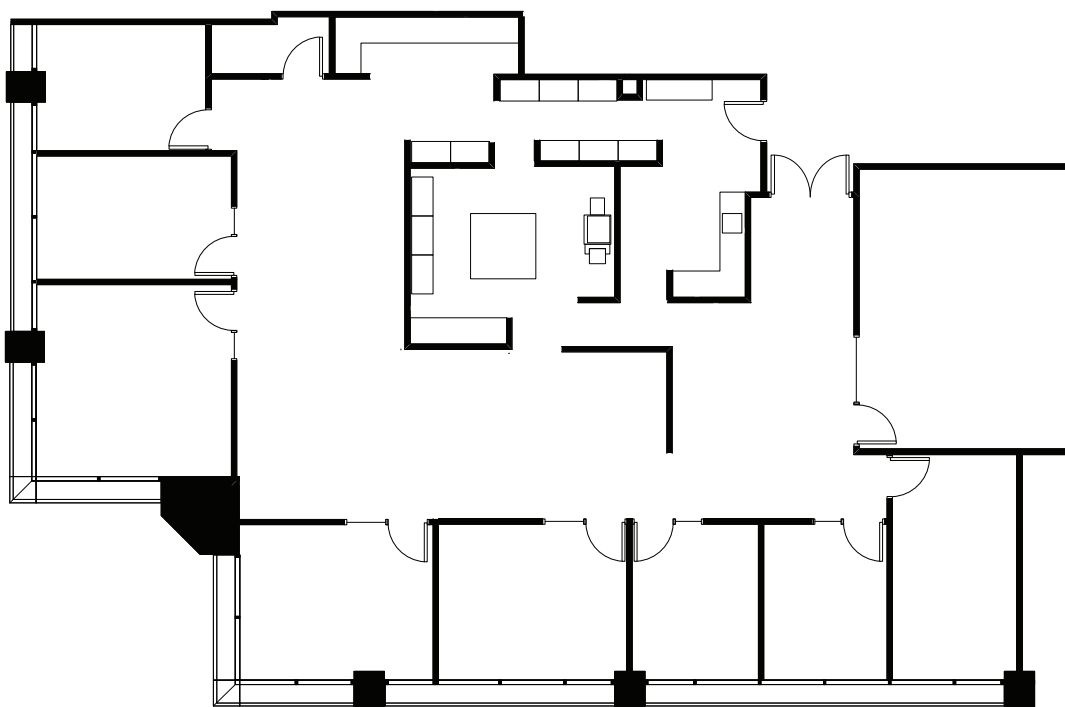
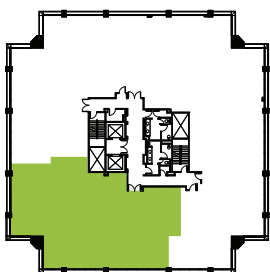
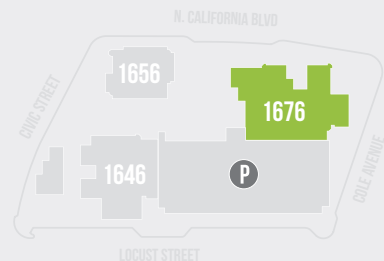
walnut creek

1676 N. CALIFORNIA

SUITE 400

±4,157 RSF

1676 N. CALIFORNIA BLVD



FLOOR PLAN



Newmark
Knight Frank

1333 N. CALIFORNIA BLVD., SUITE 343 | WALNUT CREEK, CA 94596

FOR MORE
INFORMATION

THE HEART OF WALNUT CREEK

BRECK LUTZ BLUTZ@NGKF.COM | 925.974.0109 | CA RE LICENSE #00936859
KNUTE BUCKLEW KBUCKLEW@NGKF.COM | 925.974.0240 | CA RE LICENSE #01332731
DANNY BARTZ DBARTZ@NGKF.COM | 925.974.0231 | CA RE LICENSE #01971819

GROWERS square

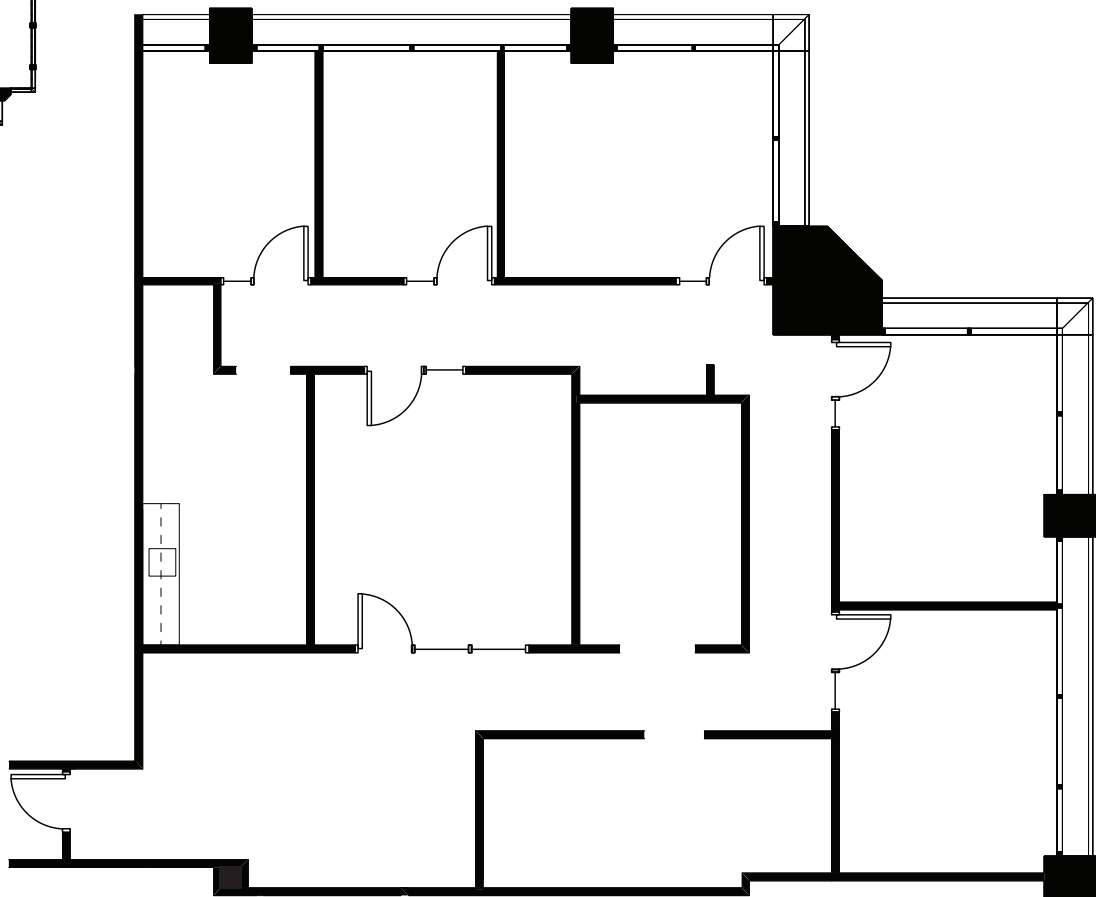
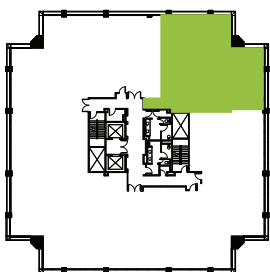
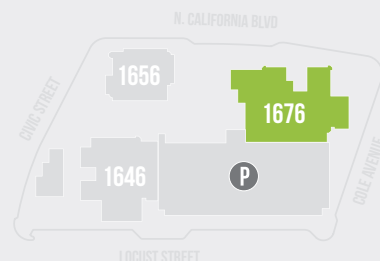
walnut creek

1676 N. CALIFORNIA

SUITE 550

±2,639 RSF

1676 N. CALIFORNIA BLVD



FLOOR PLAN



Newmark
Knight Frank

1333 N. CALIFORNIA BLVD., SUITE 343 | WALNUT CREEK, CA 94596

FOR MORE
INFORMATION

THE HEART OF WALNUT CREEK

BRECK LUTZ BLUTZ@NGKF.COM | 925.974.0109 | CA RE LICENSE #00936859
KNUTE BUCKLEW KBUCKLEW@NGKF.COM | 925.974.0240 | CA RE LICENSE #01332731
DANNY BARTZ DBARTZ@NGKF.COM | 925.974.0231 | CA RE LICENSE #01971819