



DRIVE-IN SHOP

GADSDEN, ALABAMA

SALE

2000 Hickory Street
Gadsden, AL 35904
Etowah County

BUILDING SIZE

3,785 sf Industrial/1,000 sf Office

LAND SIZE

5 Acres, cleared & fenced

CONSTRUCTION

Insulated metal

LOADING

(2) Drive-thru doors

BUILT

1980

COMMENTS

- Adjacent to Gadsden Industrial Park
- 2 Miles from Interstate
- Building in good condition

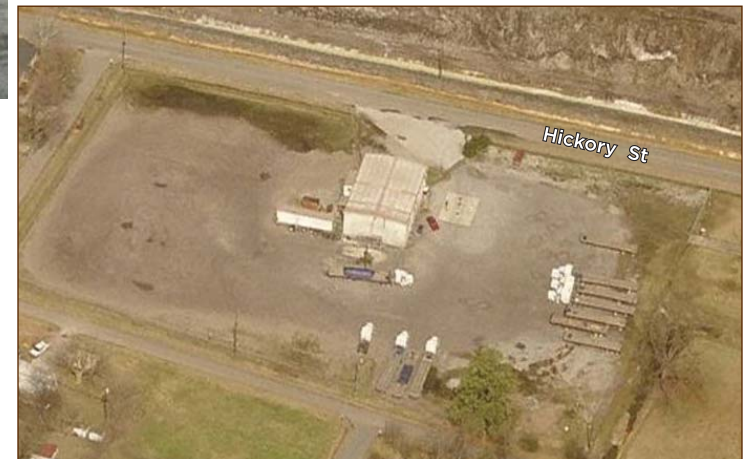


SALE PRICE

\$195,000

EXCLUSIVE AGENT

Ogden Deaton, SIOR
205.871.7100
ogdend@grahamcompany.com



Graham & Co

110 Office Park Drive
Suite 200
Birmingham, AL 35223

TEL 205.871.7100
FAX 205.871.3331
grahamcompany.com

Information deemed reliable, but not guaranteed.

2/9/11 jo