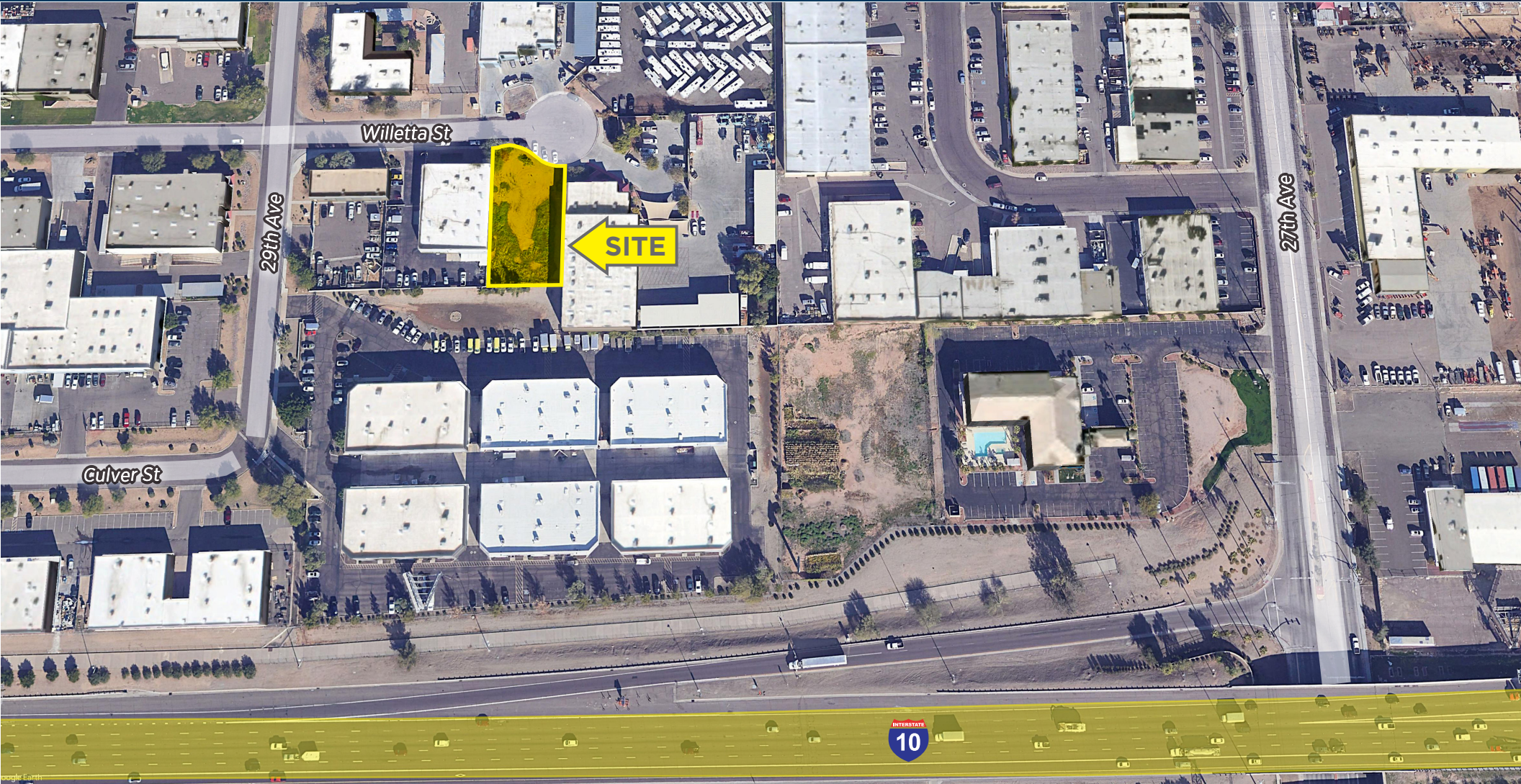


FOR SALE - Industrial Land ±16,935 SF

2811 W. Willetta St. | Phoenix, AZ

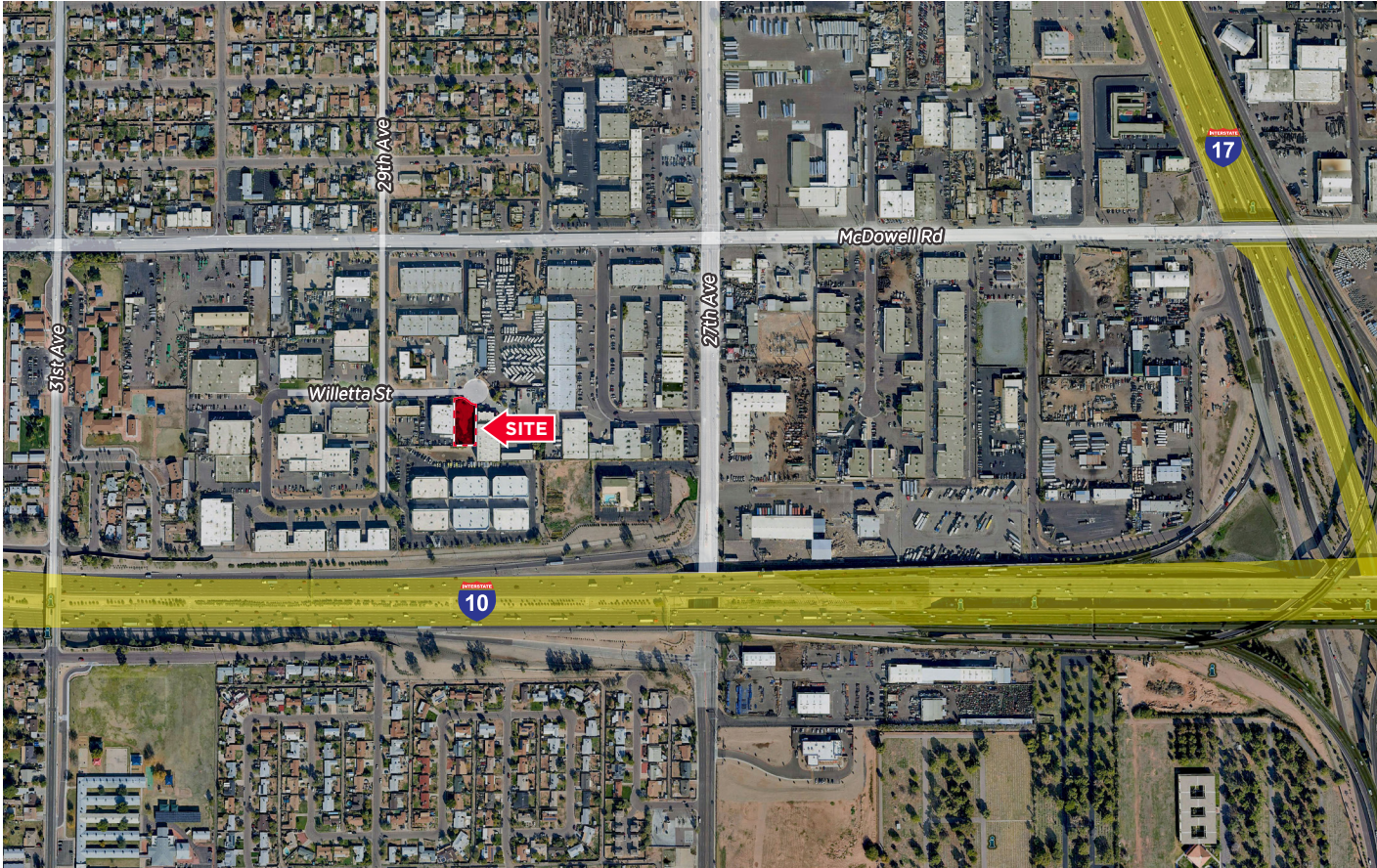


Andy Cloud
Managing Director
+1 602 224 4419
andy.cloud@cushwake.com

2555 E. Camelback Rd, Suite 400
Phoenix, Arizona 85016
ph:+1 602 954 9000
fx:+1 602 253 0528
cushmanwakefield.com

FOR SALE - Industrial Land ±16,935 SF

2811 W. Willetta St. | Phoenix, AZ



PROPERTY FEATURES

- Size: ±16,935 square feet
- Price: \$225,000
- Lot 23, Commerce Center West
- Located within an attractive Business Park Environment
- Zoning: Industrial Park, City of Phoenix
- Property Taxes: \$1,990.44 (2021)
- APN: 109-08-041A
- Property is just south of McDowell Road off of 29th Avenue and fronts the south side of Willetta Street.
- Property is situated north of I-10 Freeway and West of I-17 with access to 27th and 35th Avenues.
- Great location for any user seeking to build an industrial, office or flex building within an established area.
- Close to US60/Grand Avenue: Downtown Phoenix

For more information, please contact:

Andy Cloud

Managing Director

+1 602 224 4419

andy.cloud@cushwake.com

2555 E. Camelback Rd, Suite 400

Phoenix, Arizona 85016

ph: +1 602 954 9000

fx: +1 602 253 0528

cushmanwakefield.com