

2290 N. FIRST STREET

±992 SF - ±7,512 SF | OFFICES FOR LEASE

**NEW
PROMOTION!
7% COMMISSION TO
PROCURING
BROKER**

JON DECOITE | Senior Director | P +1 408 615 3408 | jon.decoite@cushwake.com | LIC #01471300

MIKE BAKER | Director | P +1 408 615 3406 | mike.baker@cushwake.com | LIC #01884037

COLIN FEICHTMEIR | Executive Director | P +1 408 615 3443 | colin.feichtmeir@cushwake.com | LIC #01298061

SWENSON

**CUSHMAN &
WAKEFIELD**

2290 N. FIRST STREET

AVAILABILITY

SUITE 212: ±7,512 SF
Available Now

SUITE 202: ±6,212 SF
Available Now

SUITE 209: ±992 SF
Available Now

HIGHLIGHTS

- Prominent Corner Location in North San Jose
- Immediate Access to Highways 101, 87 & the San Jose Airport
- Abundant Amenities within Walking Distance
- Light Rail Station Immediately in Front of the Building
- Showers in Building
- ±3.8/1,000 Parking

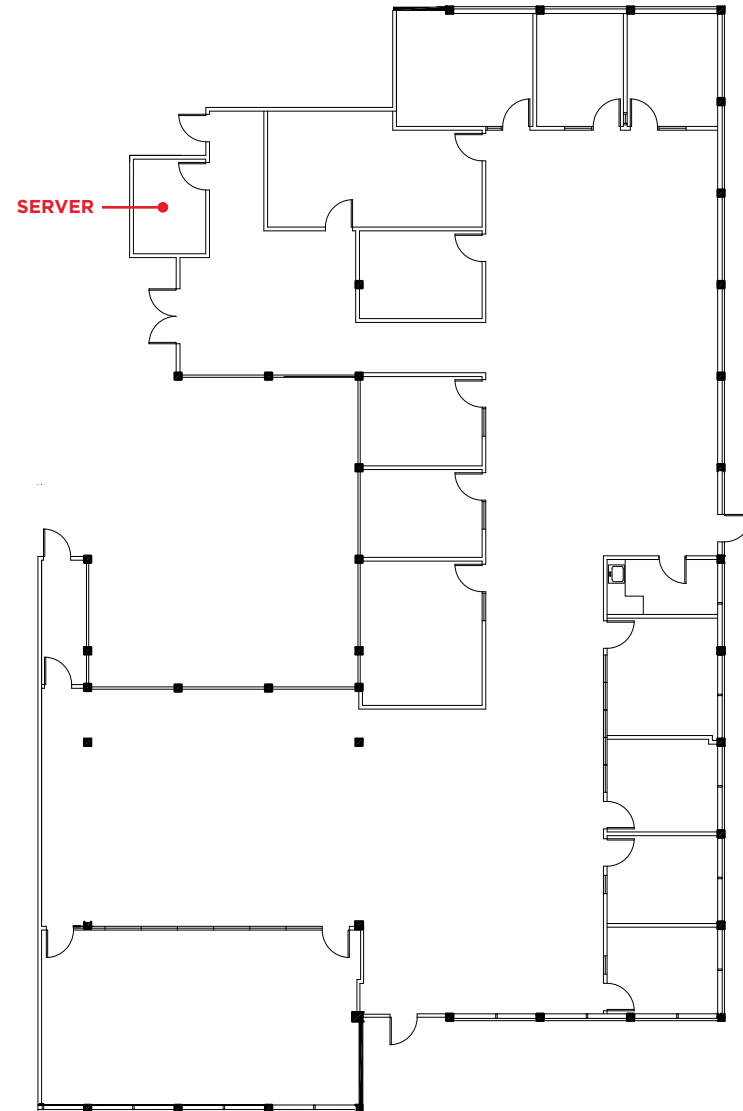
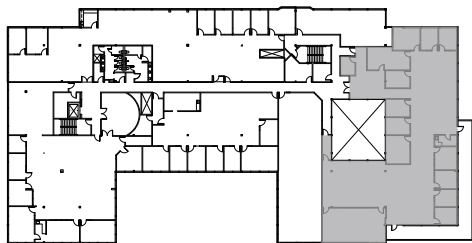


2290 N. FIRST STREET

FLOOR PLAN

SUITE 212: ±7,512 SF

Available Now

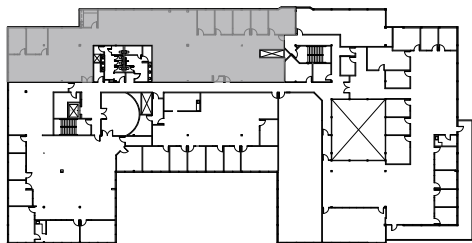
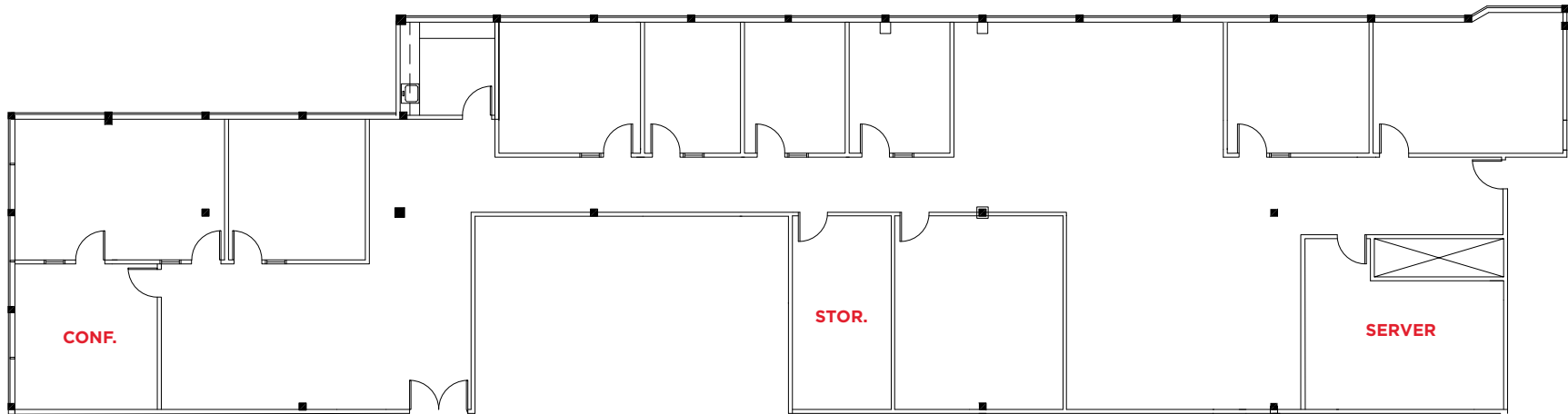


2290 N. FIRST STREET

FLOOR PLAN

SUITE 202: ±6,212 SF

Available Now

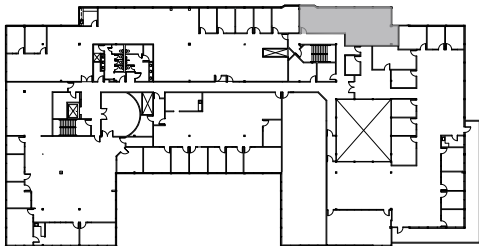
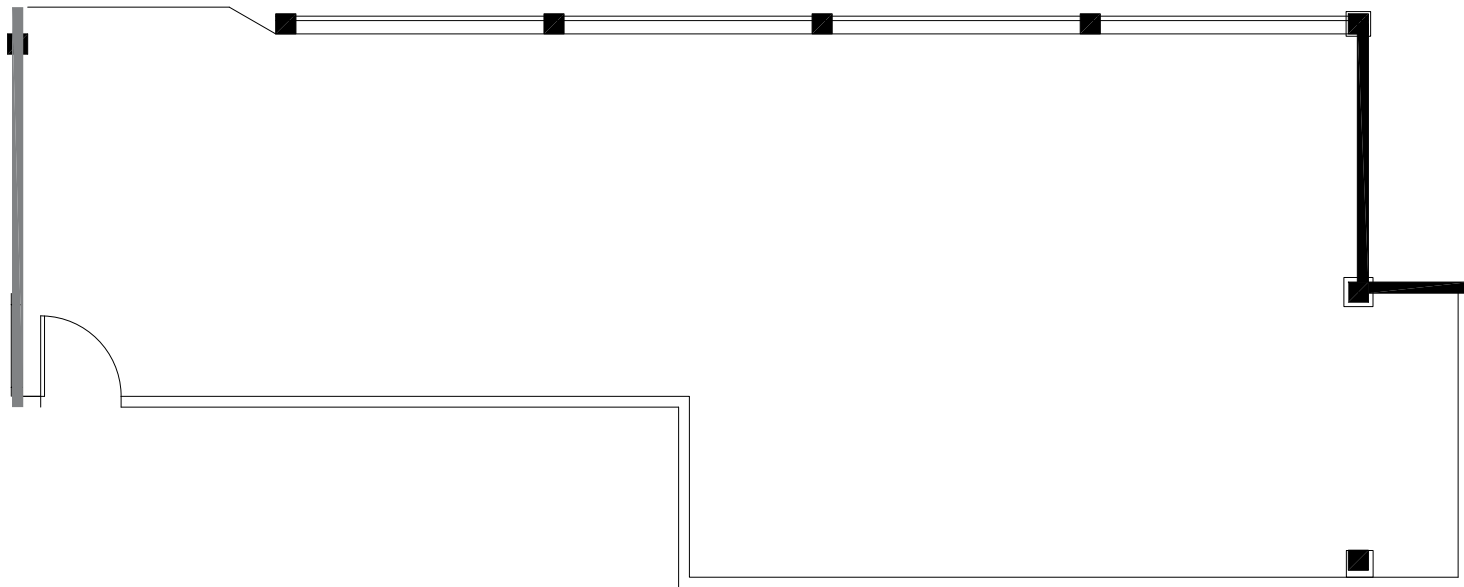


2290 N. FIRST STREET

FLOOR PLAN

SUITE 209: ±992 SF

Available Now



2290 N. FIRST STREET

LOCATION

2290 North First Street is located on the east side of North First Street, North of Brokaw and south of Charcot Avenue, approximately 1 mile east of Highway 101.

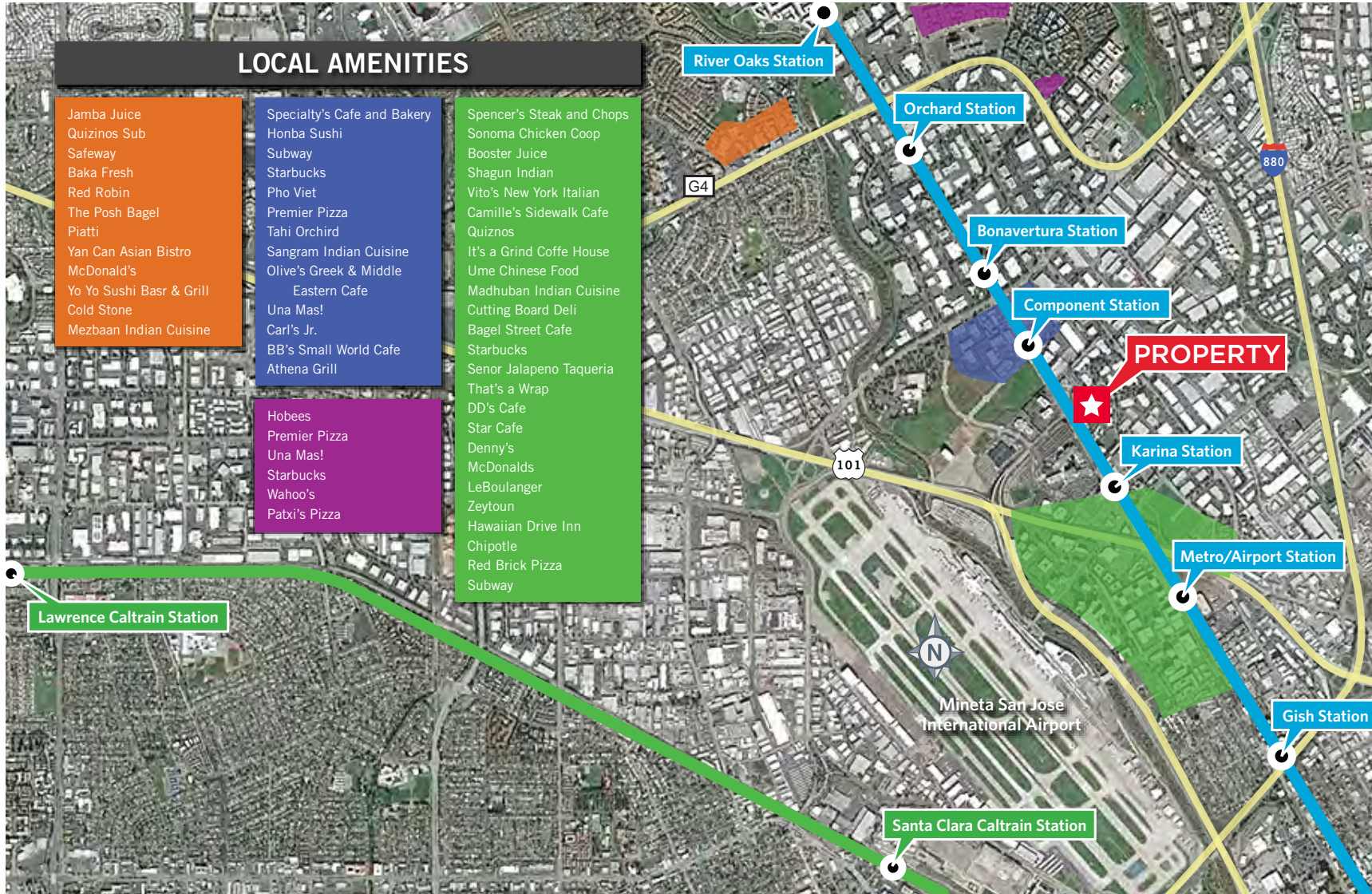
The Property is centrally located with easy access to Highways 101, 880 and 87.



- ◆ Planned BART station
- Existing and Future VTA Light Rail Stations
- Caltrain Station
- Planned BART Extension
- VTA Light Rail
- Caltrain

2290 N. FIRST STREET

AMENITIES MAP



2290 N. FIRST STREET

±992 SF - ±7,512 SF | OFFICES FOR LEASE

JON DECOITE | Senior Director | P +1 408 615 3408 | jon.decoite@cushwake.com | LIC #01471300

MIKE BAKER | Director | P +1 408 615 3406 | mike.baker@cushwake.com | LIC #01884037

COLIN FEICHTMEIR | Executive Director | P +1 408 615 3443 | colin.feichtmeir@cushwake.com | LIC #01298061



[VIEW SITE SPECIFIC COVID-19 PREVENTION PLAN](#)