

# 2,500 SF Office for Lease

## AVISON YOUNG

Plug & Play Office - South Norwalk

## 29 Marshall Street

### Opportunity

- Ground floor, private entrance
- Vaulted, loft-style
- Polished cement floors
- Floor to ceiling windows
- Furnished Plug & Play space
- Located in the heart of the historic SoNo district with an abundance of retail and restaurants
- Walking distance to the South Norwalk Metro-North Train Station
- 0.5 miles from I-95 & CT-7 ramps
- Four private offices, open bullpen and reception area, one in-suite conference room
- 6 covered parking spaces

### Rate and Term

- Inquire for rate
- Immediate occupancy



For more information, please contact:

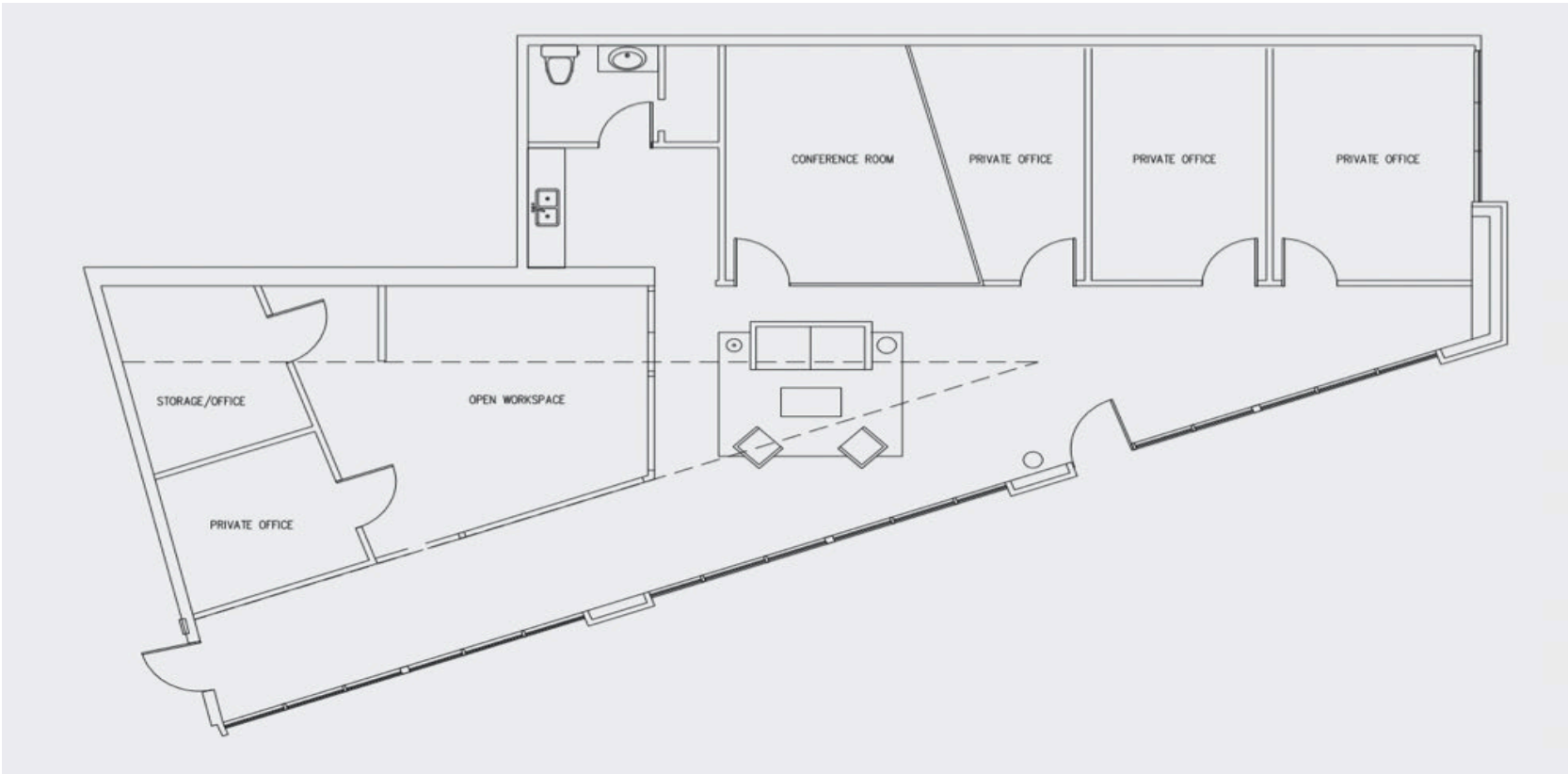
**Christopher Grundy** | Senior Associate  
203.658.6595  
[christopher.grundy@avisonyoung.com](mailto:christopher.grundy@avisonyoung.com)

383 Main Avenue, 6th Floor  
Norwalk, CT 06851  
[www.avisonyoung.com](http://www.avisonyoung.com)

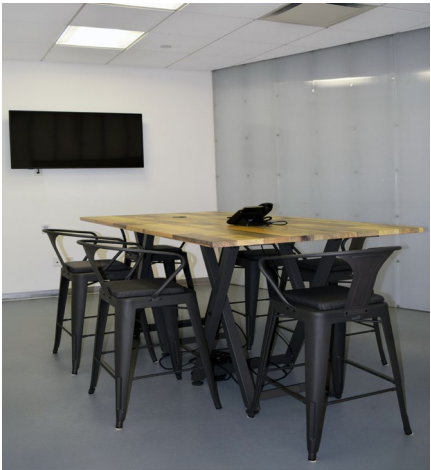


Platinum  
member





Area Map



For more information, please contact:  
**Christopher Grundy** | Senior Associate  
203.658.6595  
[christopher.grundy@avisonyoung.com](mailto:christopher.grundy@avisonyoung.com)



Platinum member