


PADS AVAILABLE, GROUND LEASE, OR FOR SALE

NWC Sossaman Road & Guadalupe Road

RETAIL



PROPERTY INFO

- + Join  TRANSMISSIONS TOTAL CAR CARE
- + Zoning: LC (Limited Commercial)
- + General Plan: Neighborhood Commercial
- + Close Proximity to US 60 Freeway and Loop 202 Santan Freeway
- + Three Pads Available
- One Fast Food Pad with Drive Thru
- Two Shop Space or Single-Tenant Pads
- 2.712 Net Acres - Total Available Spaces
- + Parking 9:1,000

PADS AVAILABLE, GROUND LEASE, OR FOR SALE

NWC Sossaman Road & Guadalupe Road

RETAIL



DEMOGRAPHICS

	1 Mile	3 Miles	5 Miles		1 Mile	3 Miles	5 Miles
2017 Population	12,509	82,797	233,419	2017 Median Age	42.70	37.70	39.00
2022 Population	13,541	90,650	255,374	2017 Average Household Income	\$72,315	\$73,654	\$73,738
2017-2022 Growth	1.60%	1.83%	1.81%	2017 Average Home Value	\$234,522	\$227,372	\$219,514
2017 Employees	1,519	21,827	59,817				

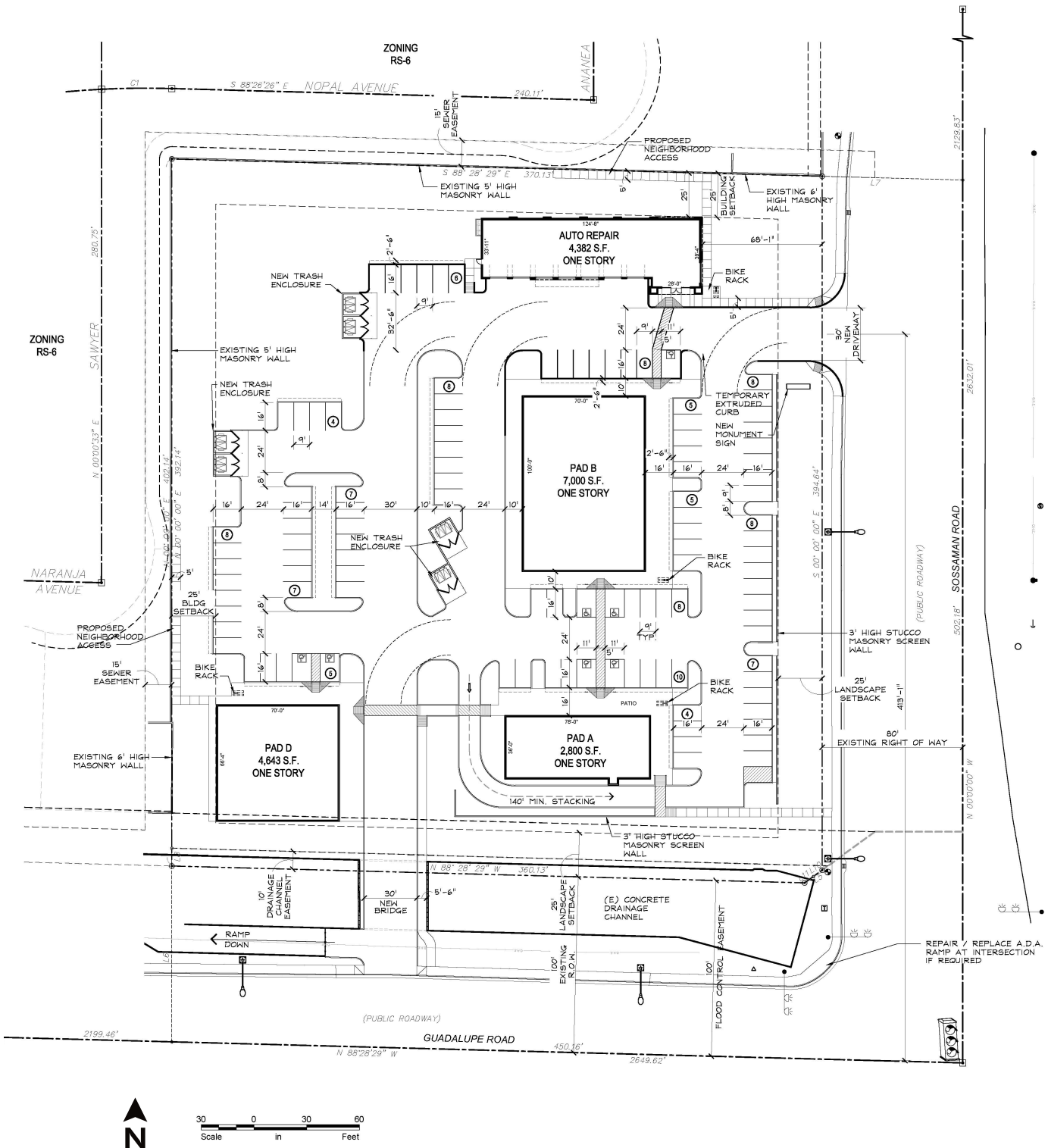
Source: Esri



PADS AVAILABLE, GROUND LEASE, OR FOR SALE

NWC Sossaman Road & Guadalupe Road

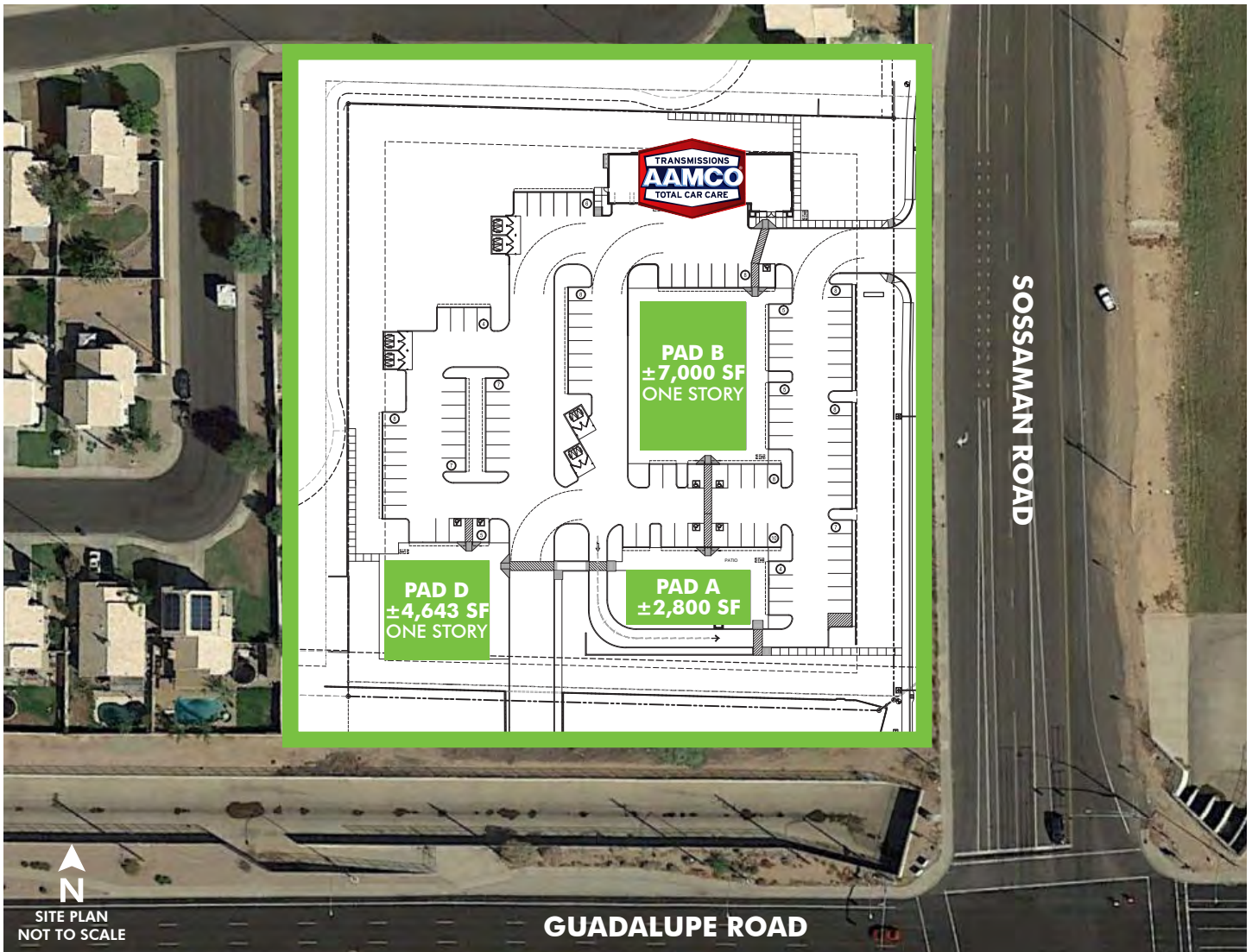
RETAIL



PADS AVAILABLE, GROUND LEASE, OR FOR SALE

NWC Sossaman Road & Guadalupe Road

RETAIL



CONTACT US

R. Max Bippus

First Vice President
+1 602 735 5518
max.bippus@cbre.com

© 2018 CBRE, Inc. All rights reserved. This information has been obtained from sources believed reliable, but has not been verified for accuracy or completeness. You should conduct a careful, independent investigation of the property and verify all information. Any reliance on this information is solely at your own risk. CBRE and the CBRE logo are service marks of CBRE, Inc. All other marks displayed on this document are the property of their respective owners. Photos herein are the property of their respective owners. Use of these images without the express written consent of the owner is prohibited.