



## FOR LEASE

1,000 SF Medical/Professional Office  
Daytona Beach, FL 32117



**Medical/Professional Office Available at Midway Professional Center**  
1893 N. Clyde Morris Blvd., Suite 120, Daytona Beach, FL 32117

### Property Features:

**Suite Size:** 1,000 SF Medical/Professional Office Space (Suite 120)

**Zoning:** (PCD) Planned Commercial Development, City of Daytona Beach

**Traffic Count:** 15,250 (AADT 2016)

### Highlights:

- Conveniently located off Clyde Morris Blvd. one mile South of Hand Avenue with easy access to I-95, I-4, Williamson Blvd., and LPGA Blvd.
- 4 Exam Rooms/Offices, Waiting Room, Reception Area, ADA Restroom
- Beautifully Decorated! Move in Ready!
- Separately Metered Electric
- Private Exit/Entry into Suite
- Includes ample parking, lush landscaping
- Monument Signage Available along Clyde Morris Blvd.
- Less than 4 miles from Florida Hospital MMC and Halifax Hospital

**Location:** 1 mile East of I-95, North of LPGA Blvd. on the East side of Clyde Morris Blvd. Midway Professional Center is located directly across the street from David C. Hinson Middle School.

For Lease  
**\$12/SF NNN**  
NNN Fees \$3.00/SF



For More information:

**Diane Larsen**

**Selby Realty, Inc.**

200 E. Granada Blvd

Suite 207

Ormond Beach, FL 32176

386.238.4456 Ext. 306

Cell: 386.451.1988

DLarsen@selbyrealty.com



Property Photos  
1893 N. Clyde Morris Blvd.  
Daytona Beach, FL 32117





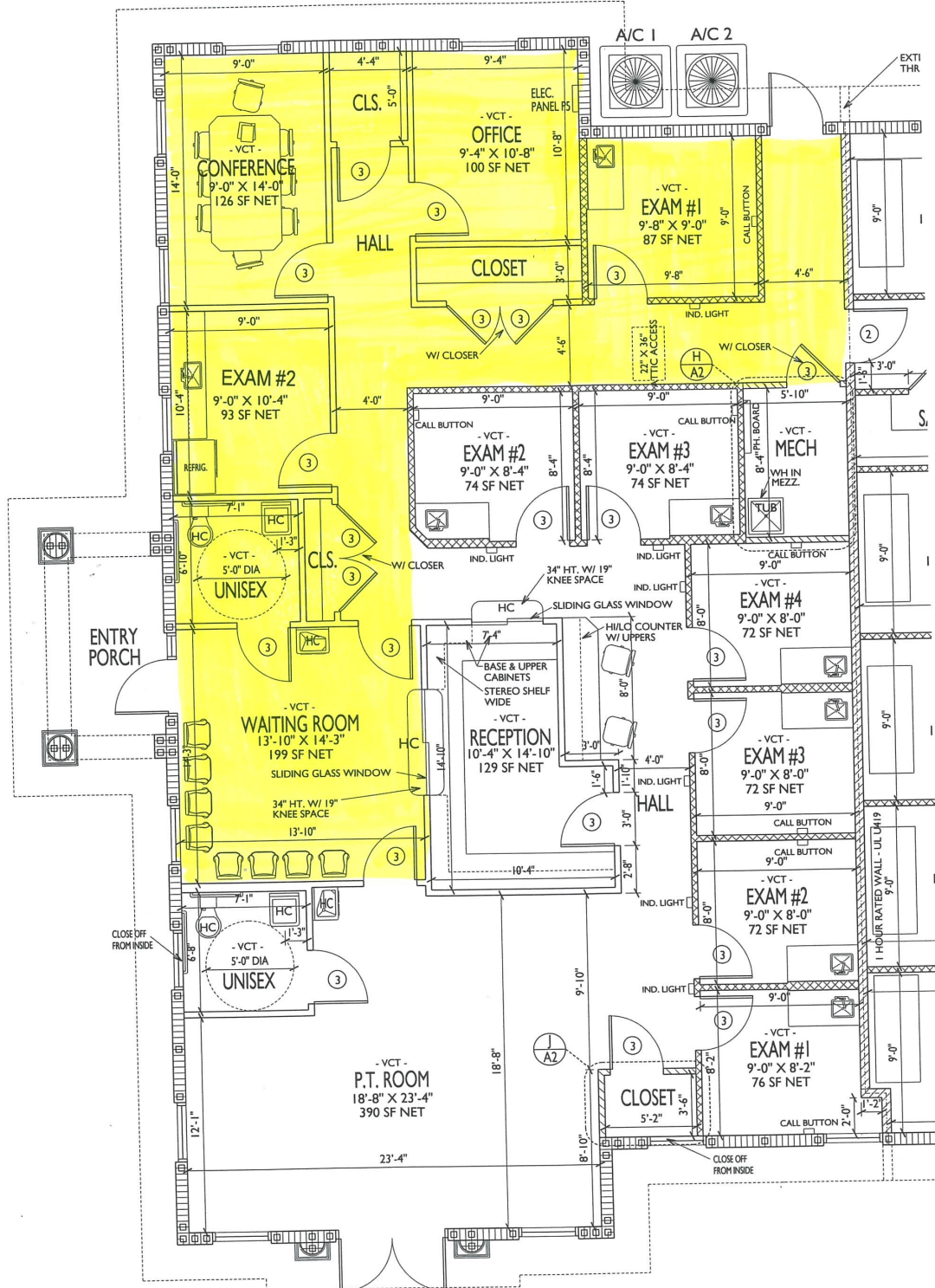
Property Photos  
1893 N. Clyde Morris Blvd.  
Daytona Beach, FL 32117





# Floor Plan - Suite 120

1893 N. Clyde Morris Blvd.  
Daytona Beach, FL 32117





# Aerial Photo/Property Map 1893 N. Clyde Morris Blvd. Daytona Beach, FL 32117

