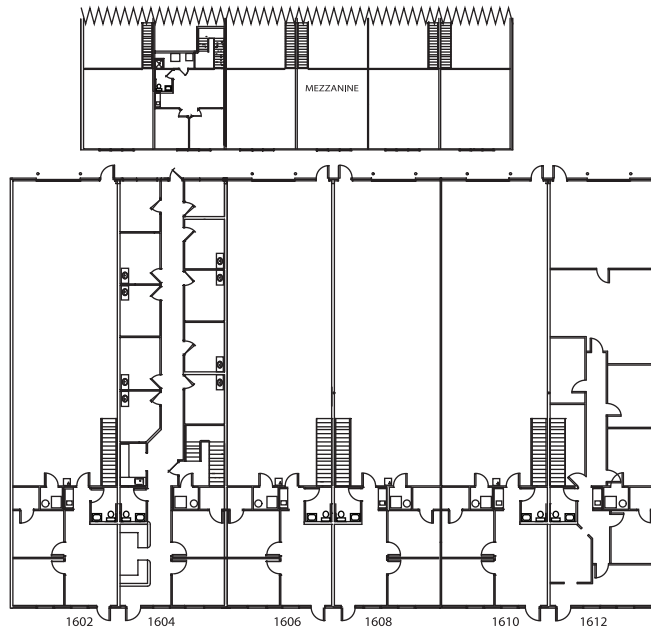




MATHER REAL ESTATE

This space is located at:
1602 Industrial Park Drive
Paola, KS 66071-9528



FOR LEASE

Features:

- Office / Warehouse
- 2,500 sq ft available
- 15,000 sq ft in entire building
- 25' wide and 100' deep
- 650 sq ft office
- Two private offices
- Additional 650 sq ft mezzanine storage above office
- Restroom and coffee bar in each space
- Venetian blinds in front offices
- Great newer location
- Reasonable price!



For information contact:

MATHER REAL ESTATE | **Sharon McLaughlin, Broker**

(o) 913 469-4040 ext 112 (c) 913 927-1418

(e) sharonm@matherco.com

