

Former Eriks West Building

14600 Interurban Ave S
Tukwila, WA

10,483 SF building total
7,694 SF footprint

5,578 office SF total
2,789 SF 1st floor
2,789 SF 2nd floor

\$0.60 PSF / month, NNN shell
\$0.85 PSF / month, NNN office
\$0.21 PSF NNN

Easy access to I-405 and I-5

Built in 1987 and updated
in 2014

HVAC in warehouse

Warehouse could be used
for distribution or light
manufacturing

1 oversized grade door

600 amps 277/480v



Location

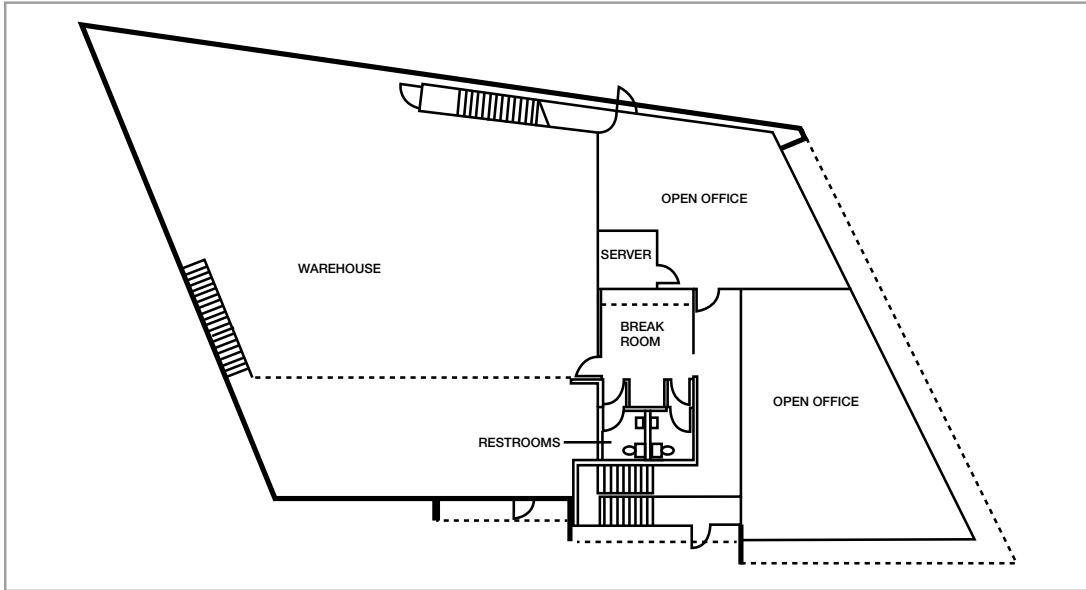


Contact

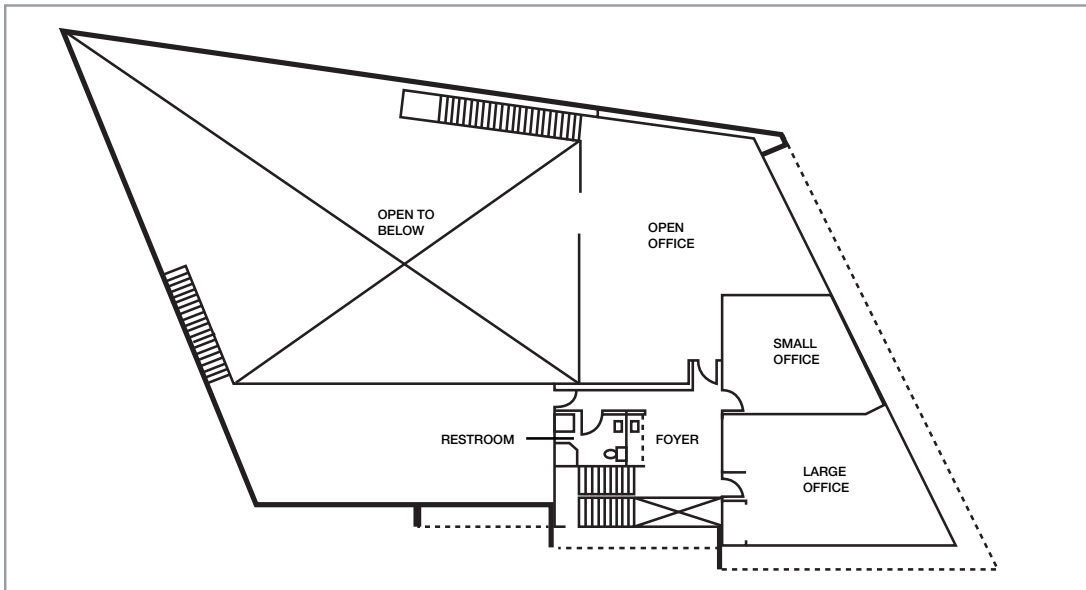
Tony Miltenberger, SIOR
206.248.7307
tonym@kiddermathews.com

Former Eriks West Building

FIRST FLOOR



SECOND FLOOR



Contact

Tony Miltenberger, SIOR

206.248.7307

tonym@kiddermathews.com

Former Eriks West Building

INTERIOR PHOTOS



Contact

Tony Miltenberger, SIOR
206.248.7307
tonym@kiddermathews.com