



# Medical/Office Suite For Lease

345 W. Portal Ave. San Francisco, California



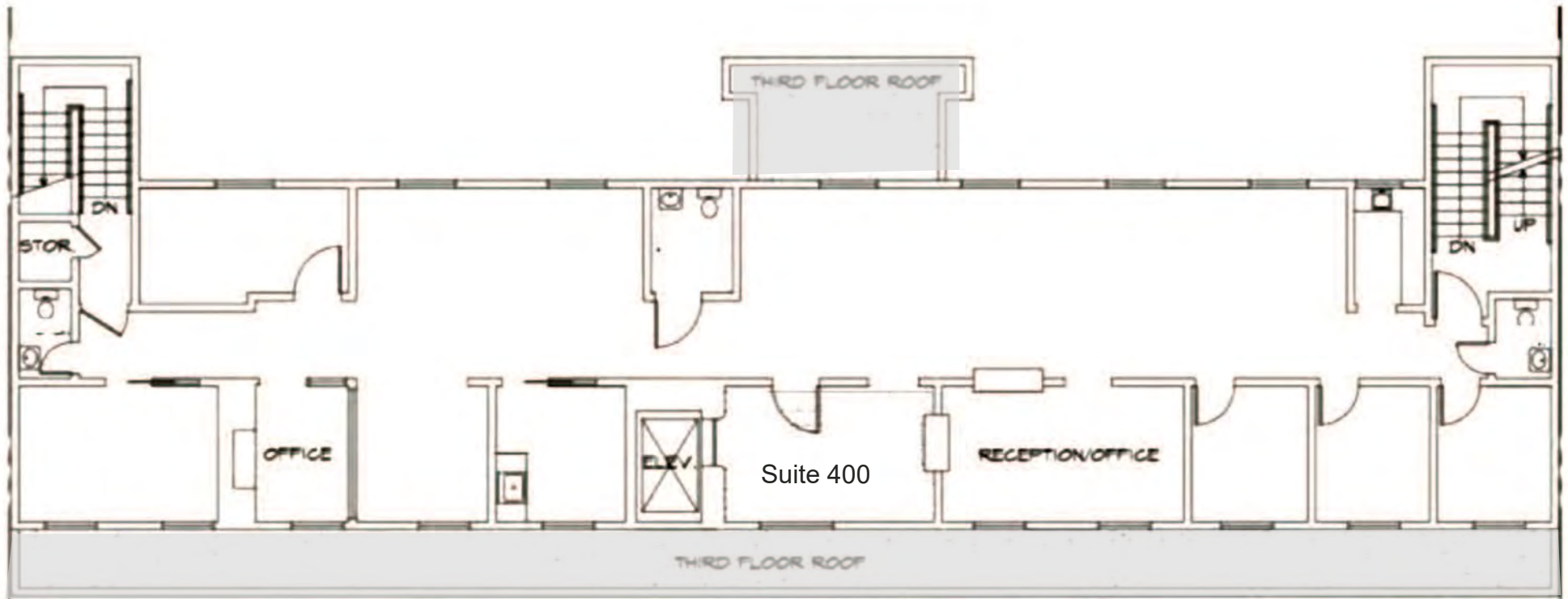
# 345 W. Portal Ave. • San Francisco, California

- 2,487± SF Medical/Office Suite
- 5 Offices/Exam rooms, reception, waiting room and kitchenette
- 2 ADA bathrooms
- Elevator served
- Off-street parking
- Potential to divide space
- Sunset District location
- \$5.00 PSF, Mod. Gross



The information contained herein has been obtained from sources we deem reliable. We cannot, however, assume responsibility for its accuracy.

## ***Suite 400: 2,487± SF***



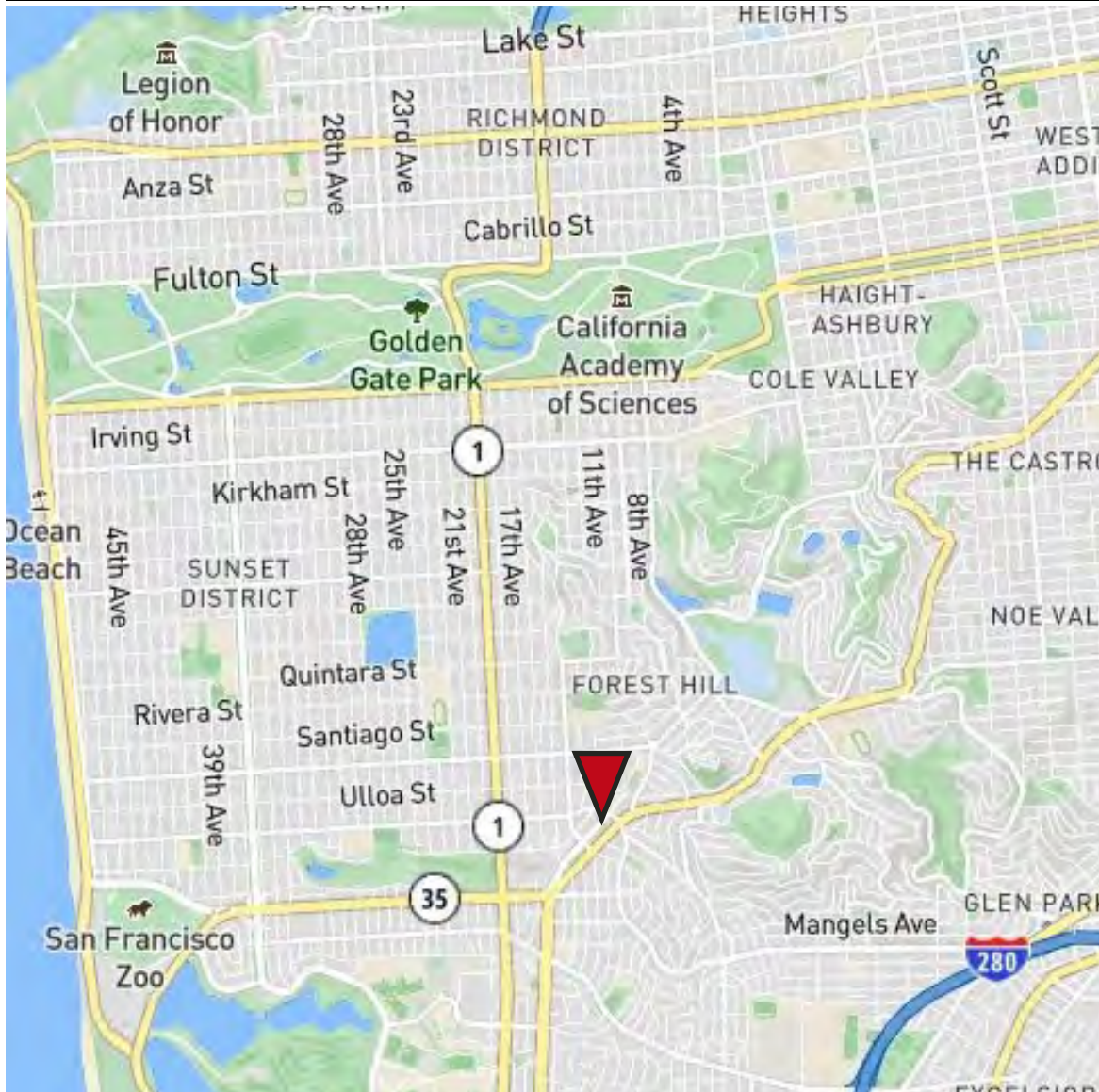


# 345 W. Portal Ave. • San Francisco, California



The information contained herein has been obtained from sources we deem reliable. We cannot, however, assume responsibility for its accuracy.

# 345 W. Portal Ave. • San Francisco, California



## AREA DEMOGRAPHICS

	<u>1 MI.</u>	<u>2 MI.</u>	<u>3 MI.</u>
<u>2020 Population:</u>	36,316	186,576	423,809
<u>Avg. HH Income:</u>	\$221,051	\$171,793	\$171,973

for more information contact:

**Grant Messinger**

Lic. #02094614

**grant@moinc.net**

(408) 477-2504

**Jeremy Awdisho**

Lic. #02064232

**Jeremy@moinc.net**

**Cell: (650) 814-4510**

**Matt Perez**

Lic. #02017798

**mperez@moinc.net**

(408) 477-2516



**COMMERCIAL BROKERAGE | INVESTMENT SALES | PROPERTY MANAGEMENT**

8 No. San Pedro Street, Suite 300 San Jose, California 95110  
Tel: 408.378.5900 [www.moinc.net](http://www.moinc.net)