

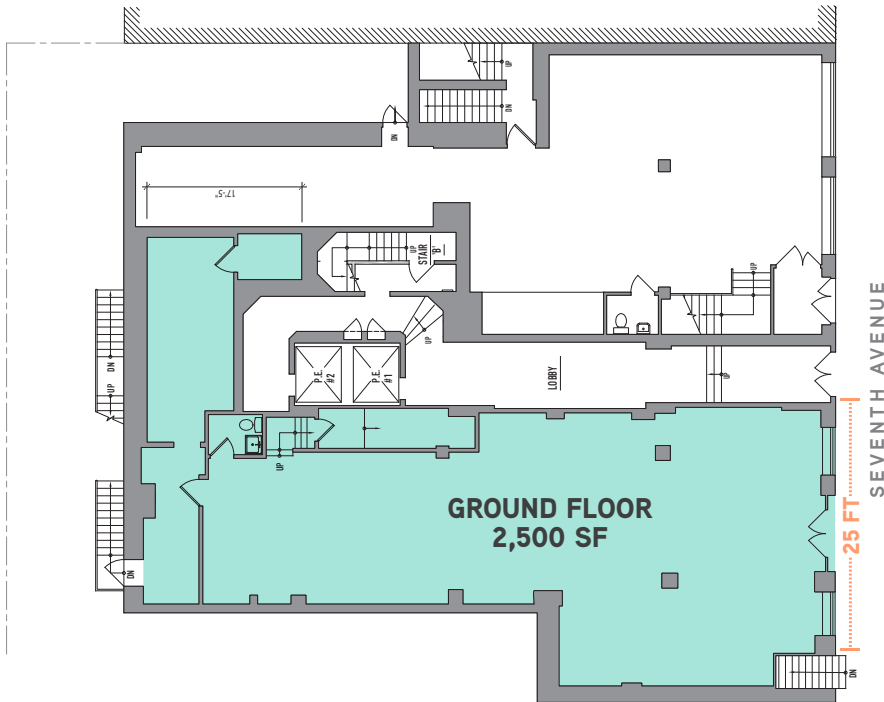
**850**  
SEVENTH  
AVENUE

# VENTED QSR OPPORTUNITY

SEVENTH AVENUE BETWEEN  
W. 54TH AND W. 55TH STREETS



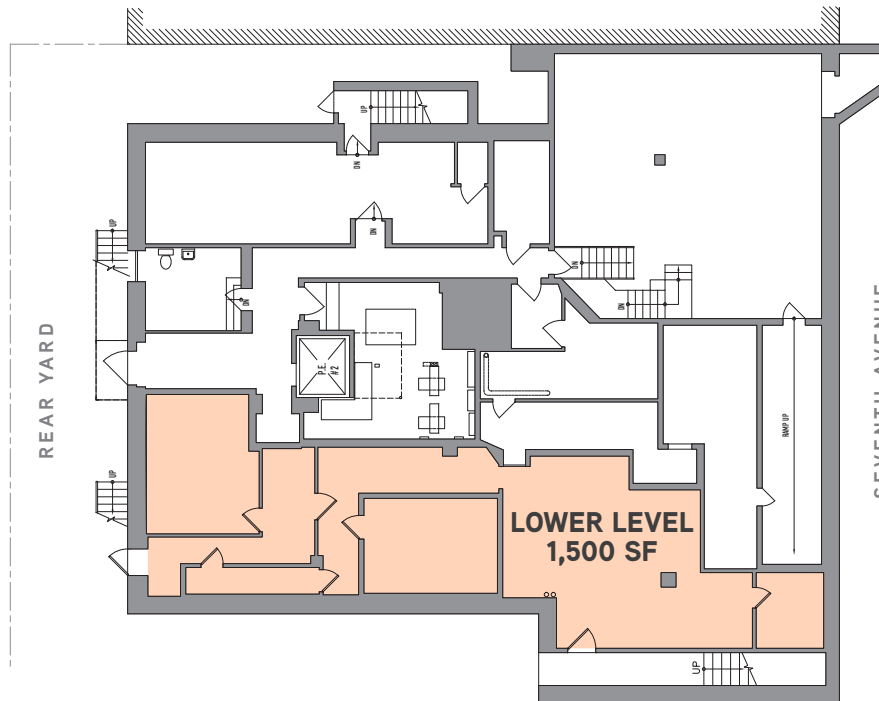
# SPACE DETAILS



**2,500 SF**  
Ground Floor

**1,500 SF**  
Lower Level

**4,000 SF**  
Total Available



## COMMENTS

- Formerly Oliviero Café
- Fully-vented QSR space
- High traffic location steps from Central Park, Times Square and midtown office corridor
- Lower Level storage space
- Excellent signage opportunity including two flag signs

## SPECS

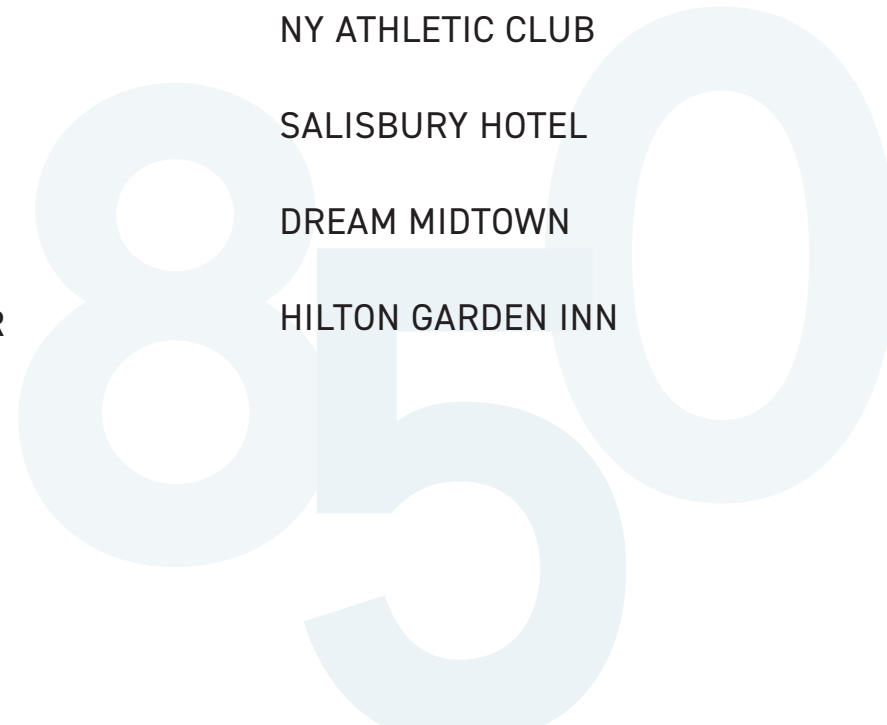
FRONTAGE 25'	CEILING HT. 12'
POSSESSION Immediate	LEASE TERM Direct
ASKING RENT Upon Request	

# NEIGHBORHOOD



## NEIGHBORING RETAILERS INCLUDE:

- BROOKLYN DINER
- ELLEN'S STARDUST DINER
- SERAFINA
- STARBUCKS
- RAY'S PIZZA
- SHAKE SHACK
- SUGARFISH
- SWEETGREEN
- PRET A MANGER
- THE MANHATTAN TIMES SQUARE
- WELLINGTON HOTEL
- JW MARRIOTT ESSEX HOUSE NEW YORK
- PARK HYATT NEW YORK
- NY ATHLETIC CLUB
- SALISBURY HOTEL
- DREAM MIDTOWN
- HILTON GARDEN INN



**850**  
**SEVENTH**  
**AVENUE**

PLEASE CONTACT US FOR RETAIL LEASING INQUIRIES:

---

SEAN MORAN

[sean.moran@cushwake.com](mailto:sean.moran@cushwake.com)

212 841 7668

PATRICK O'ROURKE

[patrick.orourke@cushwake.com](mailto:patrick.orourke@cushwake.com)

212 660 7777

