

NOTES:

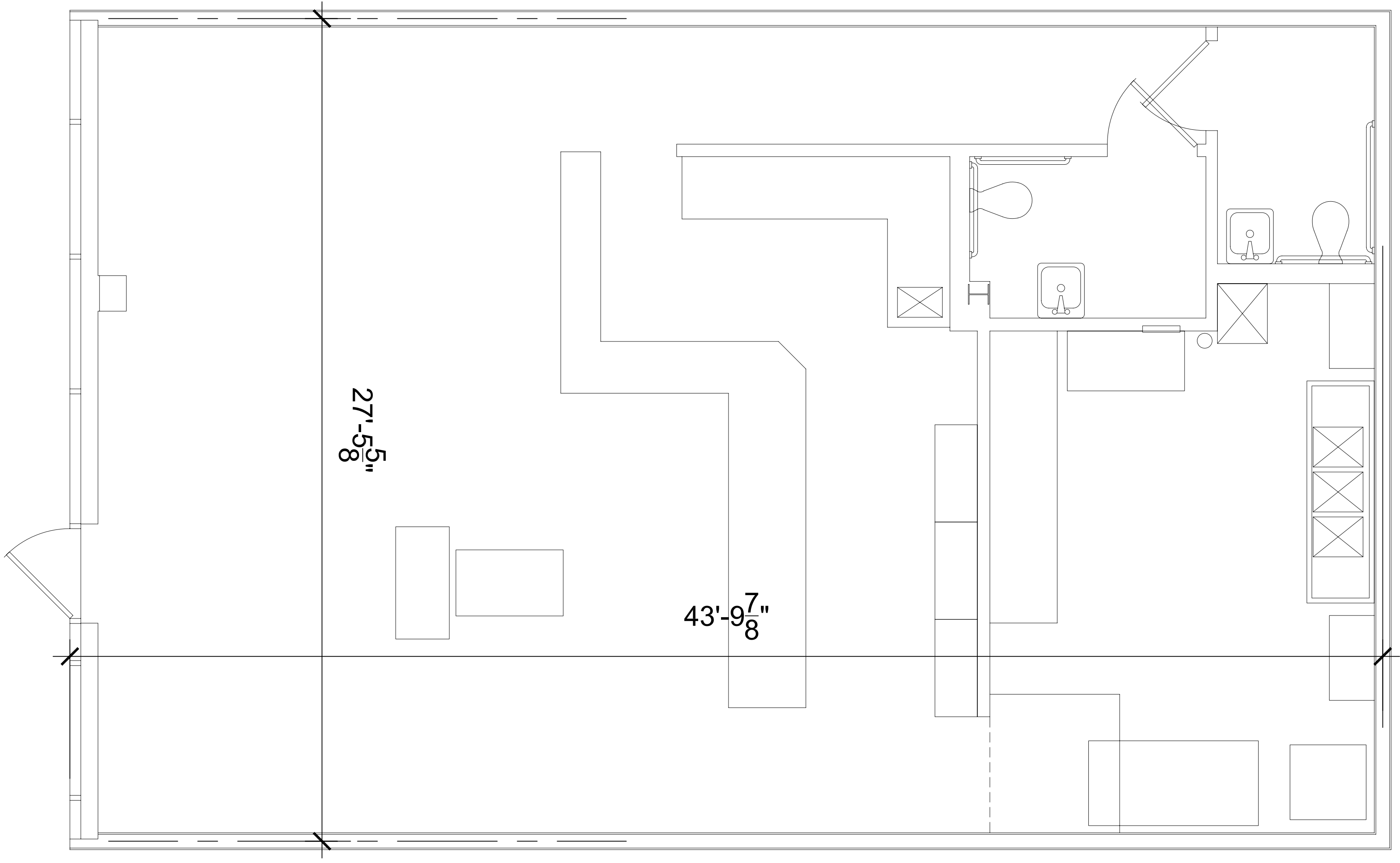
	X.X.02	First Printing	
△	-		
REV.	NO.	DATE	ISSUE NOTES

This drawing is the property of DBK Realty, and is issued subject to the condition that it is not to be copied or reproduced either in whole or in part, or used in any manner detrimental to our interest. Drawings are not to be scaled. It is the responsibility of the contractor to verify all dimensions contained in these drawings, and to notify the architect in writing of any discrepancies. Contractor to verify all dimensions of any existing conditions, materials, methods, sizes, etc. as indicated on drawings for review and approval prior to commencement of such work.

Glenview Pointe
 Suite C
 2420 Lime Kiln Ln
 Louisville, Kentucky 40222

DATE: 9.28.11
 DRAWN BY: MRO
 CHECKED BY: -
 PROJECT NO. -

SHEET A102 OF 2 REVISION



Leasable Dimensions Plan

SCALE: 3/8"=1'-0"

1 2 3 4 5 6 7 8 9 10

H G F E D C B A