

# FOR SALE

## SOUTHTOWN LAND I-29 & Highway 44

3.34 acres in Southtown Commercial Development



**\$10,000  
Broker  
Bonus**

**SITE**

Boondocks Avenue  
Worthing, SD 57077



### size

3.34 acres

Approximately 720' x 202'



### price

\$265,000



### location

Located in Southtown commercial development at Worthing Exit of Interstate 29



### access

Great access off Highway 44, just 1/10 mile from Interstate 29 access



### zoning

commercial



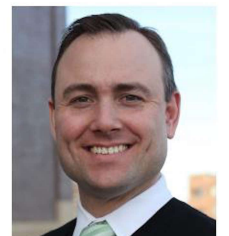
### co-tenancy

Billion Auto - Southtown, Eastern Farmers Co-op, Great Plains Truck Parts, New Prairie RV Southtown, Miller Farm Loaders, GrabTec, Living Design Aviaries

Information deemed reliable but not guaranteed.

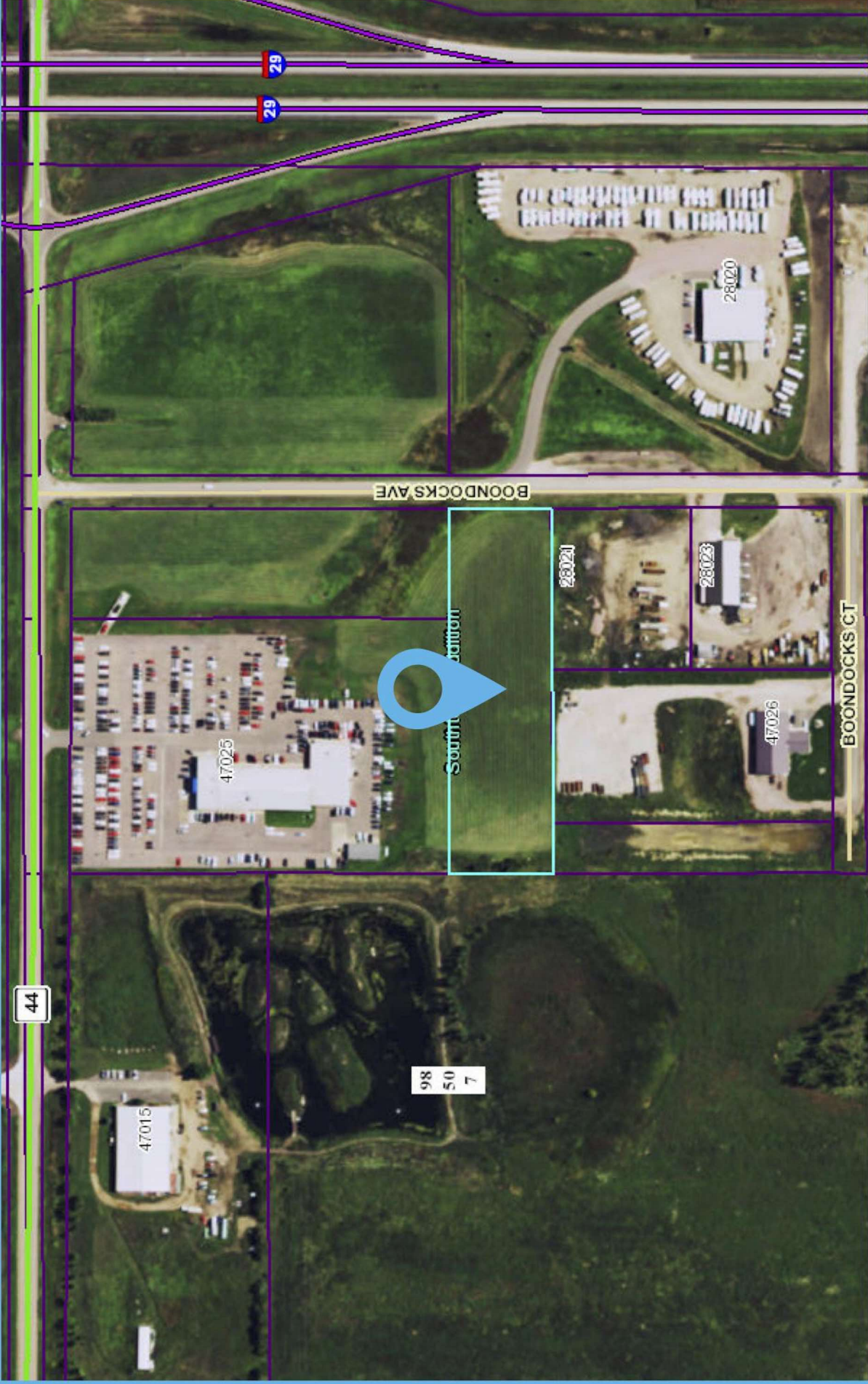


5800 South Remington Place #1200  
Sioux Falls, South Dakota 57108  
VBCLink.com | 605.361.8211



**605.376.0127**

Ryan.Tysdal@VBCLink.com



3.34 acres available in the Southtown commercial development (Worthing Exit, Interstate 29)