



VAN BEEK DEVELOPMENT LAND

Sixmile Road + East 10th Street

37.68 Acres For Sale



8001 East 10th Street
Sioux Falls, SD 57110



size

37.68 acres



price

\$49,000 per acre



development

Great serviceable infill site!



cell tower

Site includes an existing cell tower. Contact Broker for additional details.



location

Prime Eastside location at Sixmile Road and East 10th Street, adjacent to Willow Run Golf Course and south of BV Assam Elementary.



co-tenancy

Willow Run Golf Course, BV Assam Elementary, Alibi Bar & Grill, Arbor's Edge, Mystic Creek, Pink Lake Hills, Willow Ridge, Willow's Edge

Information deemed reliable but not guaranteed.

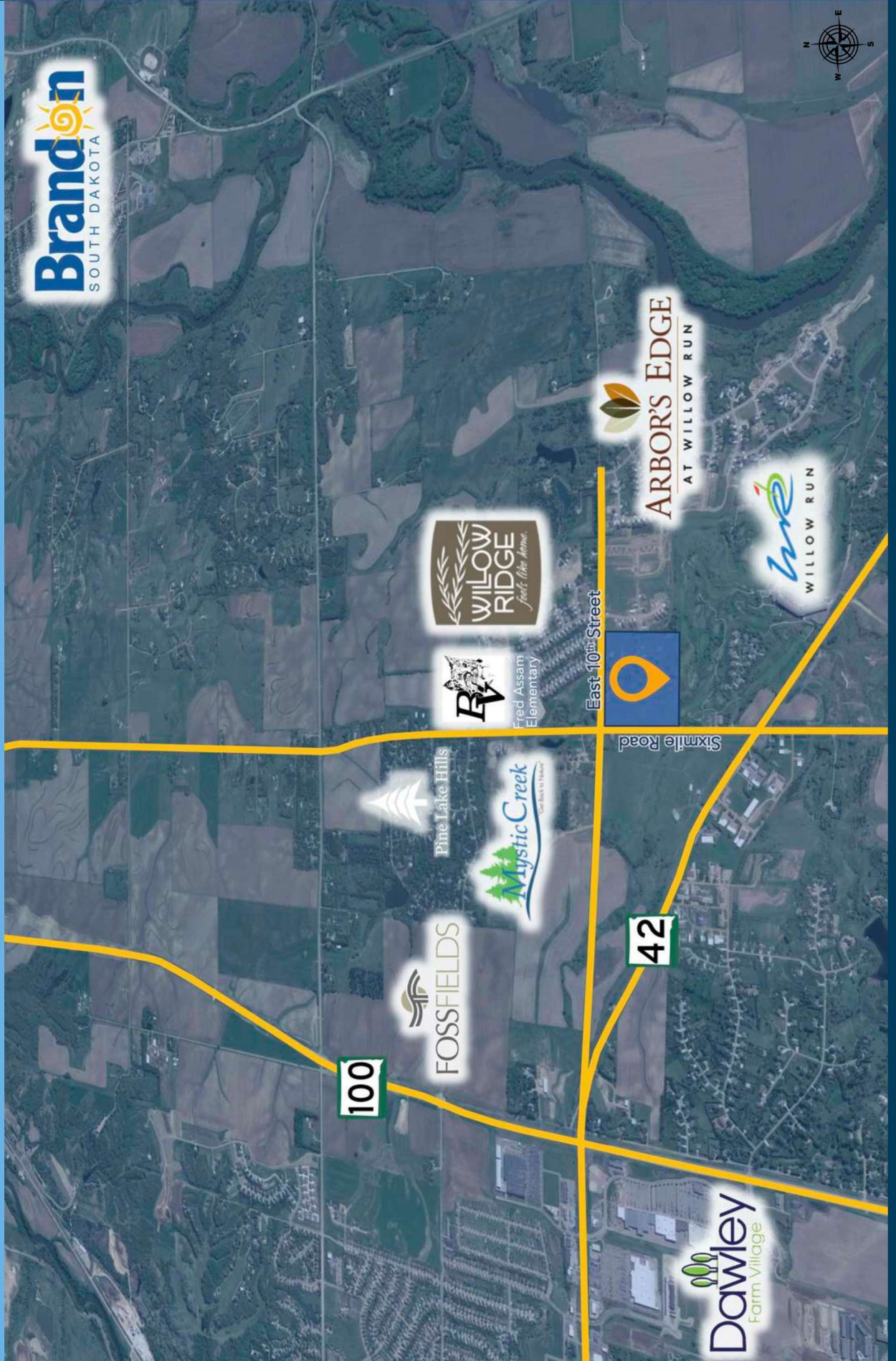


Lake Lorraine | 2571 S Westlake Drive #100
Sioux Falls, South Dakota 57106
VBClink.com | 605.361.8211



605.376.0127
Ryan@VBClink.com

AREA MAP



PARCEL MAP



AERIAL PHOTOS

