

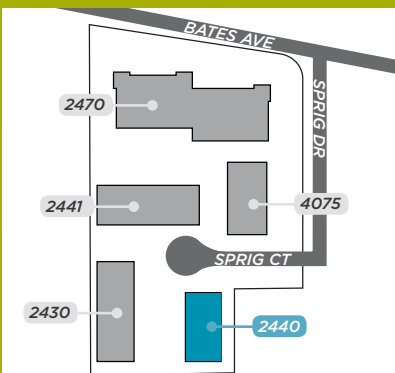
2440

FOR LEASE

GARAVENTA BUSINESS PARK

2440 SPRIG CT, CONCORD

±10,800 SF LIGHT INDUSTRIAL UNIT WITH RARE SECURED YARD



TONY BINSWANGER, SIOR
Executive Director
+1 925 627 2482
tony.binswanger@cushwake.com
LIC# 01861701

BO HARKINS
Director
+1 925 627 2481
bo.harkins@cushwake.com
LIC #01943785

MIKE GOODWIN
Associate
+1 925 627 2891
mike.goodwin@cushwake.com
LIC #02067534

GARAVENTA BUSINESS PARK

2441 SPRIG CT.

2430 SPRIG CT.

2440 SPRIG CT.

BATES AVE

SPRIG DR

SPRIG CT

2470 BATES AVE.

4075 SPRIG DR.

FOR LEASE GARAVENTA BUSINESS PARK | 2440 SPRIG CT

TONY BINSWANGER, SIOR
Executive Director
+1 925 627 2482
tony.binswanger@cushwake.com
LIC# 01861701

BO HARKINS
Director
+1 925 627 2481
bo.harkins@cushwake.com
LIC #01943785

MIKE GOODWIN
Associate
+1 925 627 2891
mike.goodwin@cushwake.com
LIC #02067534





2440 SPRIG CT. HIGHLIGHTS

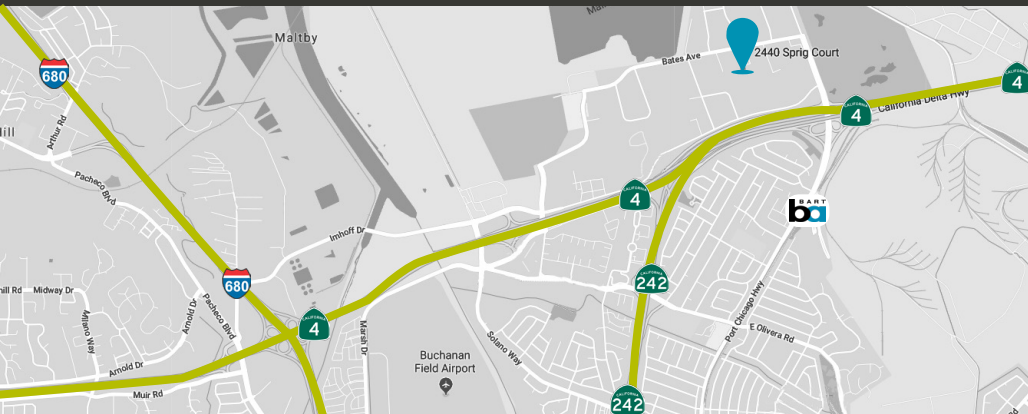
- ±10,800 SF STANDALONE LIGHT INDUSTRIAL BLDG. (144' W X 75' D)
- THREE (3) GRADE DOORS (ADDITIONAL DOORS POSSIBLE)
- ±18' MINIMUM CLEAR
- 400 AMPS @ 120/208
- ±5,500 SF HIGHLY IMPROVED OFFICE
- ±5,500 SECURED YARD

CALL BROKER FOR LEASE RATE



ABOUT GARAVENTA BUSINESS PARK

Comprised of five buildings totaling ±92,000 square feet of building area, the Garaventa Business Park offers a variety of light industrial R&D/Flex, office and service commercial space to accommodate multiple tenant types and size range requirements. Conveniently located at the **corner of Bates Avenue and Sprig Drive** in North Concord California, the Garaventa Park is well situated with **quick access to Highway 4, I-680 and 242** from the Port Chicago Highway and Solano Way exit ramps off Highway 4. Nearby amenities are available including a golf course.



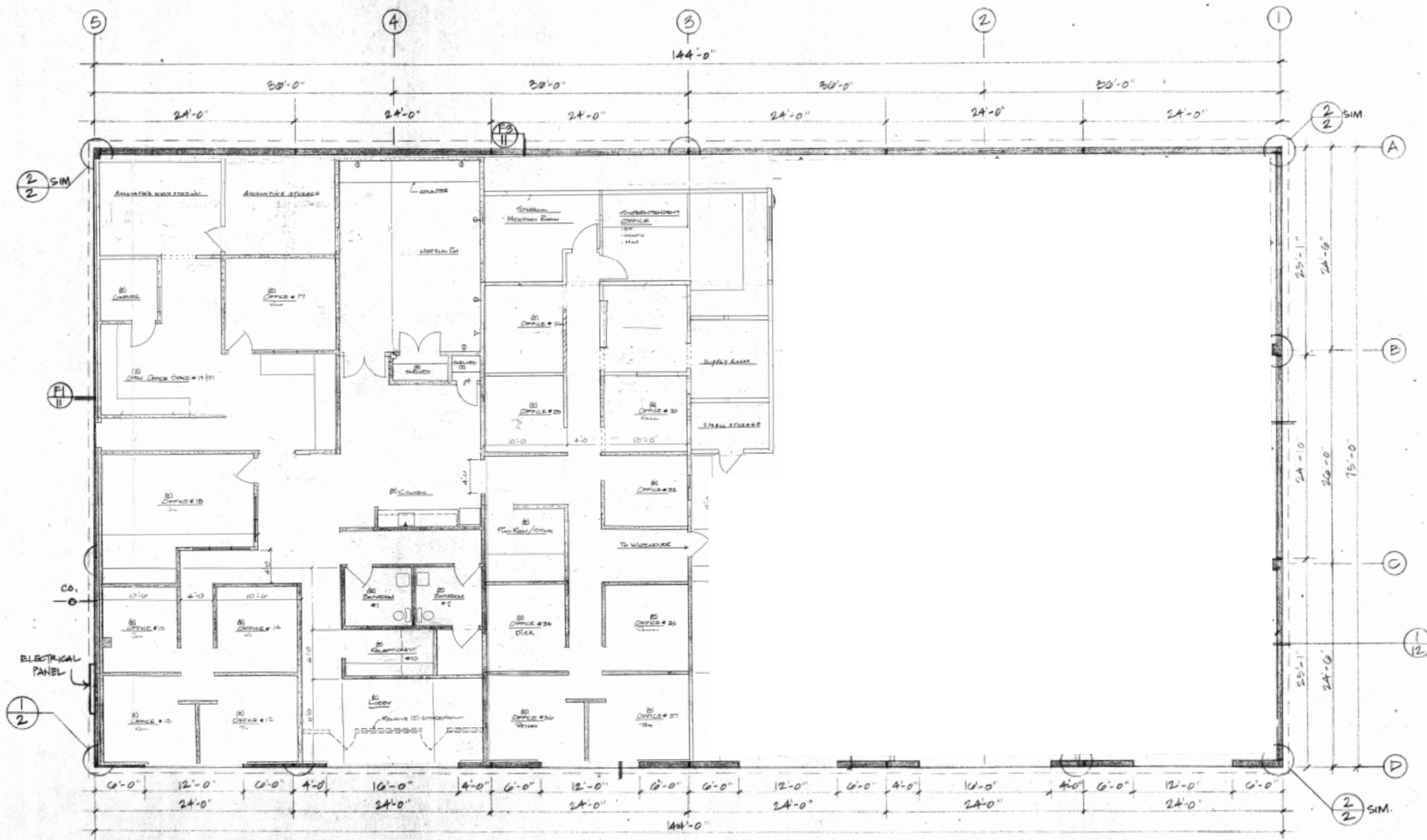
FOR LEASE GARAVENTA BUSINESS PARK | 2440 SPRIG CT

TONY BINSWANGER, SIOR
Executive Director
+1 925 627 2482
tony.binswanger@cushwake.com
LIC# 01861701

BO HARKINS
Director
+1 925 627 2481
bo.harkins@cushwake.com
LIC #01943785

MIKE GOODWIN
Associate
+1 925 627 2891
mike.goodwin@cushwake.com
LIC #02067534





FOR LEASE GARAVENTA BUSINESS PARK | 2440 SPRIG CT

TONY BINSWANGER, SIOR
 Executive Director
 +1 925 627 2482
 tony.binswanger@cushwake.com
 LIC# 01861701

BO HARKINS
 Director
 +1 925 627 2481
 bo.harkins@cushwake.com
 LIC #01943785

MIKE GOODWIN
 Associate
 +1 925 627 2891
 mike.goodwin@cushwake.com
 LIC #02067534

