

OASIS IN "OLD PASADENA"

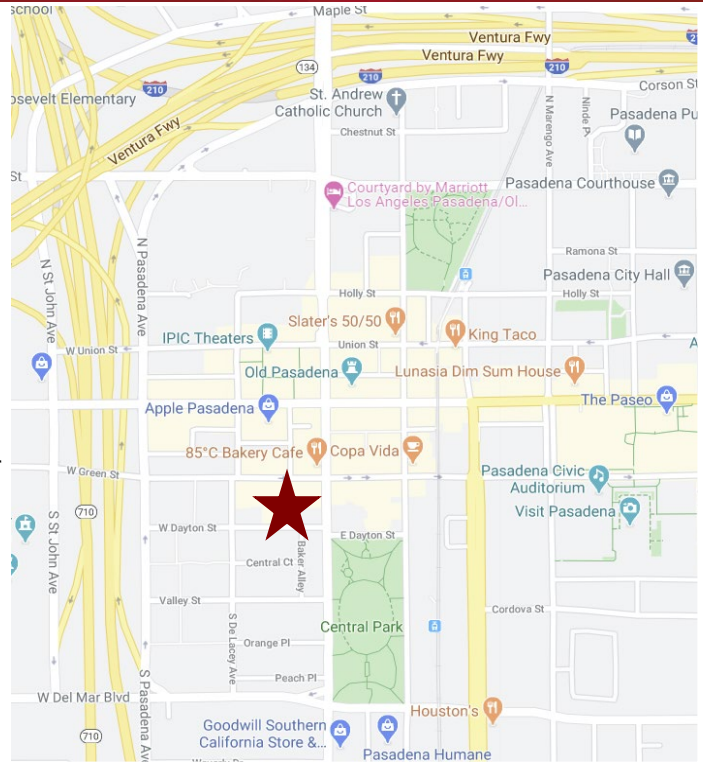


"LIVERY" BUILDING

21 W. DAYTON STREET, PASADENA, CA

FOR LEASE

AVAILABLE SPACE	2,753 sq. ft.
LEASE RATE	\$3.20 per sq. ft., Modified Gross. Tenant pays all utilities, trash, janitorial and own liability insurance.
AVAILABLE	June 1, 2020.
YEAR BUILT	1923.
PARKING	Six (6) to seven (7) parking spaces free of charge.
AMENITIES	<ul style="list-style-type: none">* Walking distance to shops, restaurants, major retailers.* Furniture available for sale.* Gated entry.* Private patio.* Historic Site: During the 1800's carriages were stored in the building. Garden area was a stable.



For more Information, Contact:

Dan Alle

dalle@redstonecre.com

Lic. # No. 01017941

Carole Walker

cwalker@redstonecre.com

Lic. # No. 01525534

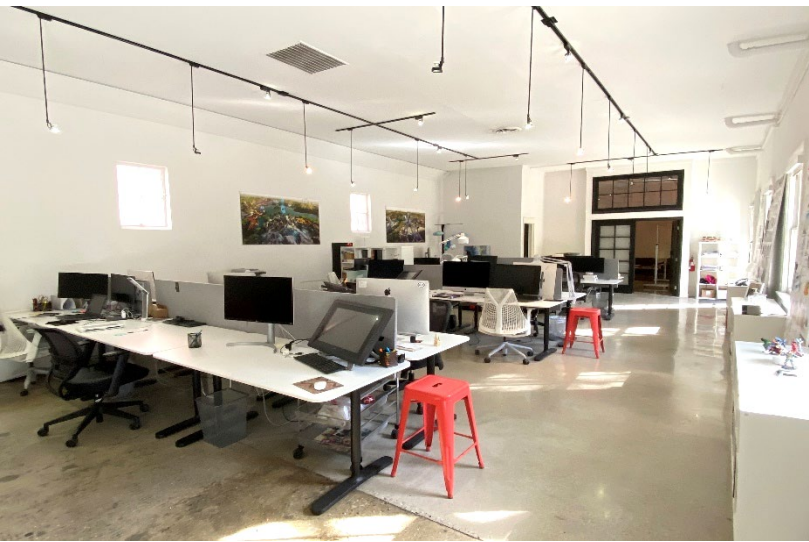
(626) 795-2255

**DO NOT DISTURB TENANT.
PLEASE MAKE APPOINTMENT WITH BROKER.**

Redstone
COMMERCIAL REAL ESTATE

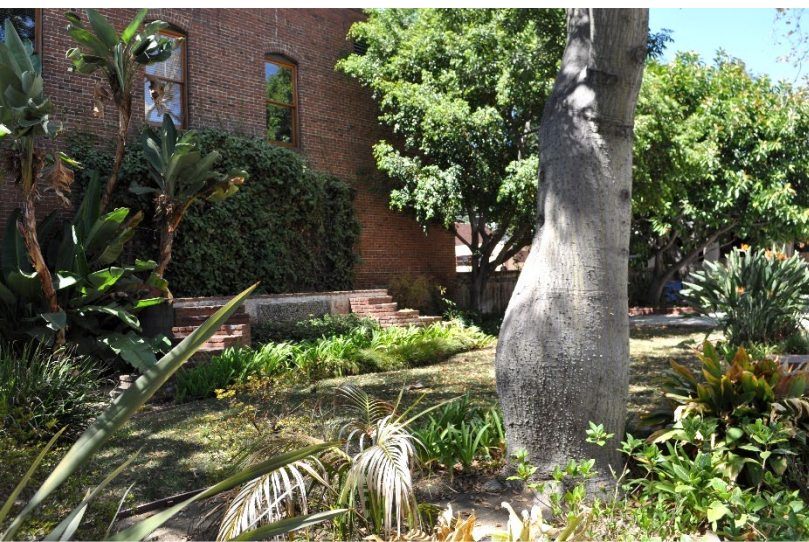
All information contained herein is from sources deemed reliable but has not been verified and is submitted without any warranty or representation, expressed or implied, as to its accuracy, and Redstone Commercial Real Estate, License #01525534, assumes no liability for errors or omissions of any kind, change of price, rental or other conditions, including, without limitation, prior sale, lease or financing or withdrawal without notice. This presentation is for information only and under no circumstances whatsoever is to be deemed a contract, note, memorandum or any other form of binding commitment.

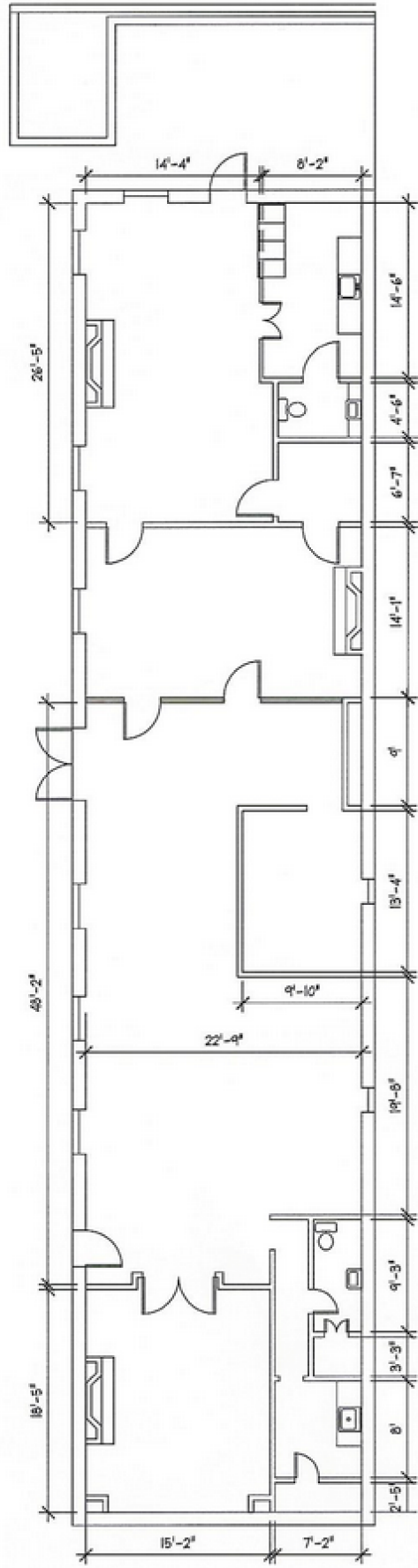
21 Dayton Street



21 Dayton Street

EXTERIOR PICTURES





AS-BUILT
 21 WEST DAYTON
 PASADENA, CA

Creative Energy
 architecture and interiors
 241 East Colorado Boulevard, Suite 203
 Pasadena, California 91101
 phone 626.304.0505 fax 626.304.0715

