

FOR LEASE

51189 SHELBY PARKWAY
SHELBY TOWNSHIP, MI 48315



PROPERTY FEATURES:

- Lease existing 4,060 SF or build-to-suit up to 8,350 SF
- Modern newer construction building with high ceilings
- Retail, office, or medical uses permitted
- Ideally located at the entrance to Cherry Creek Corporate Park next to Wal-Mart & Starbucks
- Visible from 23 Mile Road and M-53 exit ramp
- 34 private parking spaces, plus ability to create more parking where the drive-thru currently exists
- Rental rate of \$26.00/SF, NNN



FOR MORE INFORMATION PLEASE CONTACT:

ROBERT HIBBERT
robert.hibbert@freg.com

TODD HAWLEY
todd.hawley@freg.com

248.324.2000

eCODE 338

The information provided herein along with any attachment(s) was obtained from sources believed to be reliable, however, Friedman Real Estate makes no guarantees, warranties, or representations as to the completeness or accuracy of such information and legal counsel is advised. All information provided is subject to verification and no liability for reliance on such information or errors or omissions is assumed. The presentation of this property is submitted subject to errors, omissions, change of price or conditions, prior sale or lease, or withdrawal without notice. Copyright © 2018 Friedman Real Estate. All rights reserved.

FOR LEASE

51189 SHELBY PARKWAY
SHELBY TOWNSHIP, MI 48315



Map data ©2018 Google Imagery ©2018 , CNES / Airbus, DigitalGlobe, Landsat / Copernicus, U.S. Geological Survey, USDA Farm Service Agency



FOR MORE INFORMATION PLEASE CONTACT:

ROBERT HIBBERT robert.hibbert@freg.com

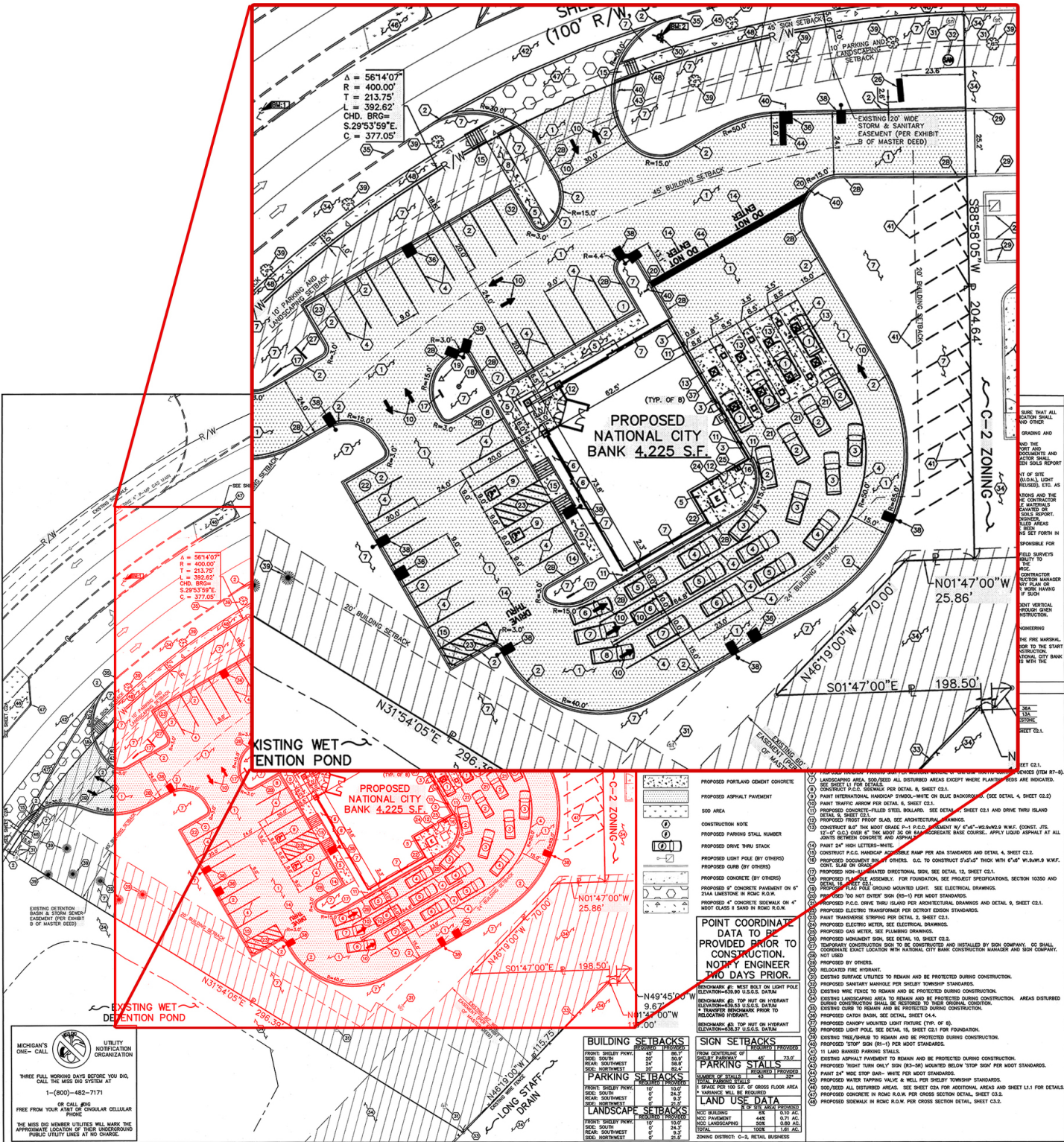
TODD HAWLEY todd.hawley@freg.com

248.324.2000

eCODE 338

FOR LEASE

51189 SHELBY PARKWAY
SHELBY TOWNSHIP, MI 48315



GPD ASSOCIATES
10000 W. 12 MILE RD. #100
FARMINGTON HILLS, MI 48334

National City

NATIONAL CITY BANK
51189 SHELBY PARKWAY
SHELBY TOWNSHIP, MI 48315

SITE PLAN

REV.	DATE	DESCRIPTION
1	11/15/16	ASSEMBLY

DATE: 12/01/04
S.A.K.
D.J.H.
T.D.R.

FOR P.O. NO. 2004090.27

C2

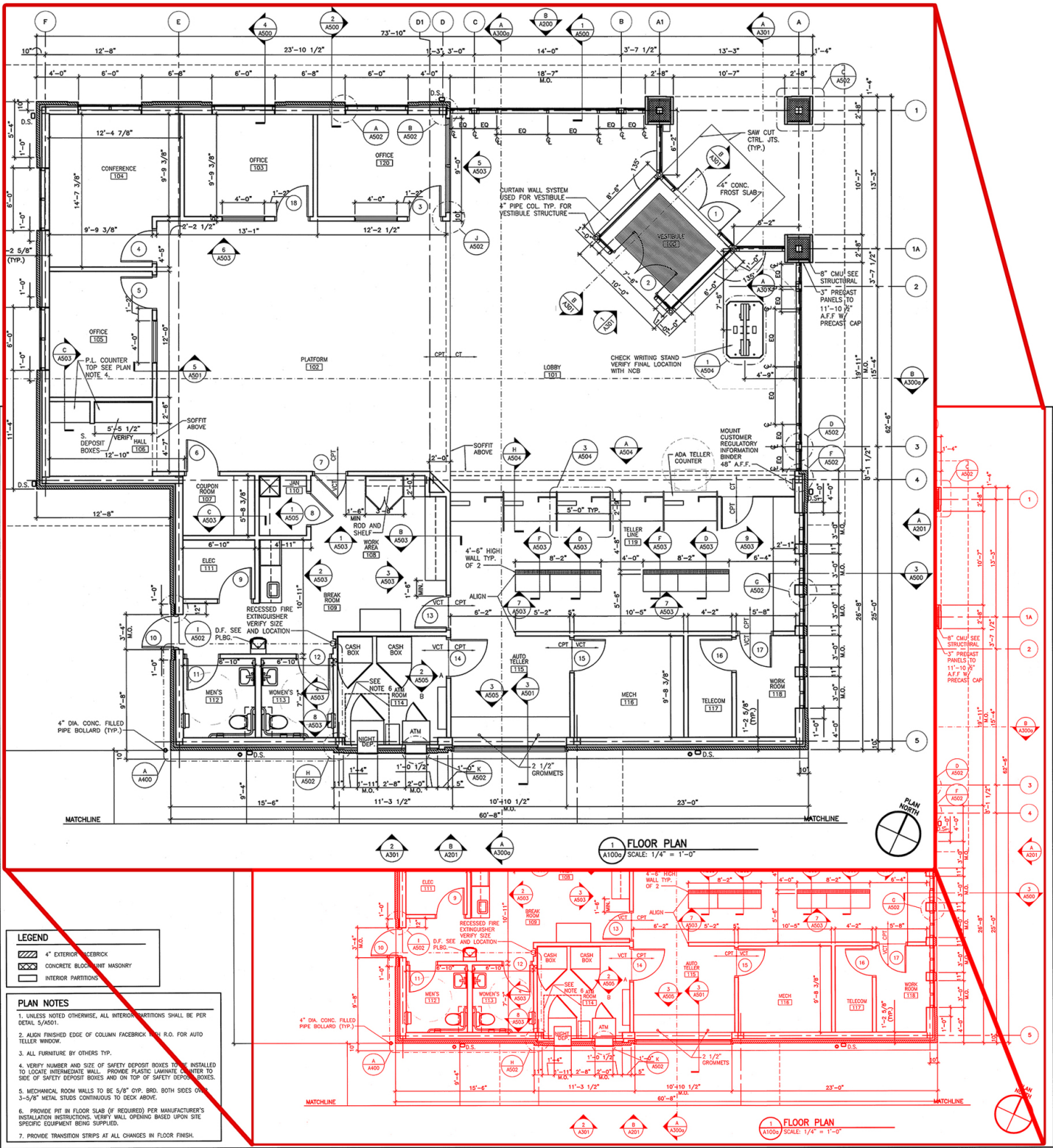
FOR MORE INFORMATION PLEASE CONTACT:

ROBERT HIBBERT robert.hibbert@freg.com
TODD HAWLEY todd.hawley@freg.com

248.324.2000
eCODE 338

FOR LEASE

51189 SHELBY PARKWAY
SHELBY TOWNSHIP, MI 48315



GPD ASSOCIATES
3000 W. MICHIGAN, SUITE 200
ANN ARBOR, MI 48106

National City	
REVISIONS	DESCRIPTION

NATIONAL CITY BANK
51189 SHELBY PARKWAY
SHELBY TOWNSHIP, MI 48315

DATE	12-10-04
DESIGNED BY	AC
DRAWN BY	BNB
CHECKED BY	BNB
DATE	12-10-04
JOB NO.	2004090.27

A100a

FOR MORE INFORMATION PLEASE CONTACT:

ROBERT HIBBERT robert.hibbert@freg.com
TODD HAWLEY todd.hawley@freg.com

248.324.2000
eCODE 338