



COMMONS 90

15800 SE Eastgate Way, Bldg I • Bellevue, WA 98008

76,116 RSF
FULL BUILDING
OPPORTUNITY
Available 8/1/2020



Lake Washington
PARTNERS

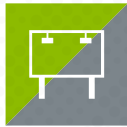
CBRE

PROPERTY HIGHLIGHTS



FULL BUILDING

±76,116 RSF
Available 8/1/2020
Potentially divisible



BUILDING SIGNAGE

I-90 visibility



PARKING

4/1,000 RSF
Free of charge



TRAINING & CONFERENCE CENTER

Reservable room for
50+ people with
A/V equipment



FITNESS CENTER

With showers, lockers
& towel service



BIKE STORAGE

With lockers
on-site



COURTYARD

With seating &
fire pits



QUICK BITES

Avanti Market
on-site



TELECOM/DATA

CenturyLink fiber
optic cable to the site



FOOD TRUCKS

Two rotating daily
food trucks



FLOOR PLATES

Efficient ±25,000 RSF



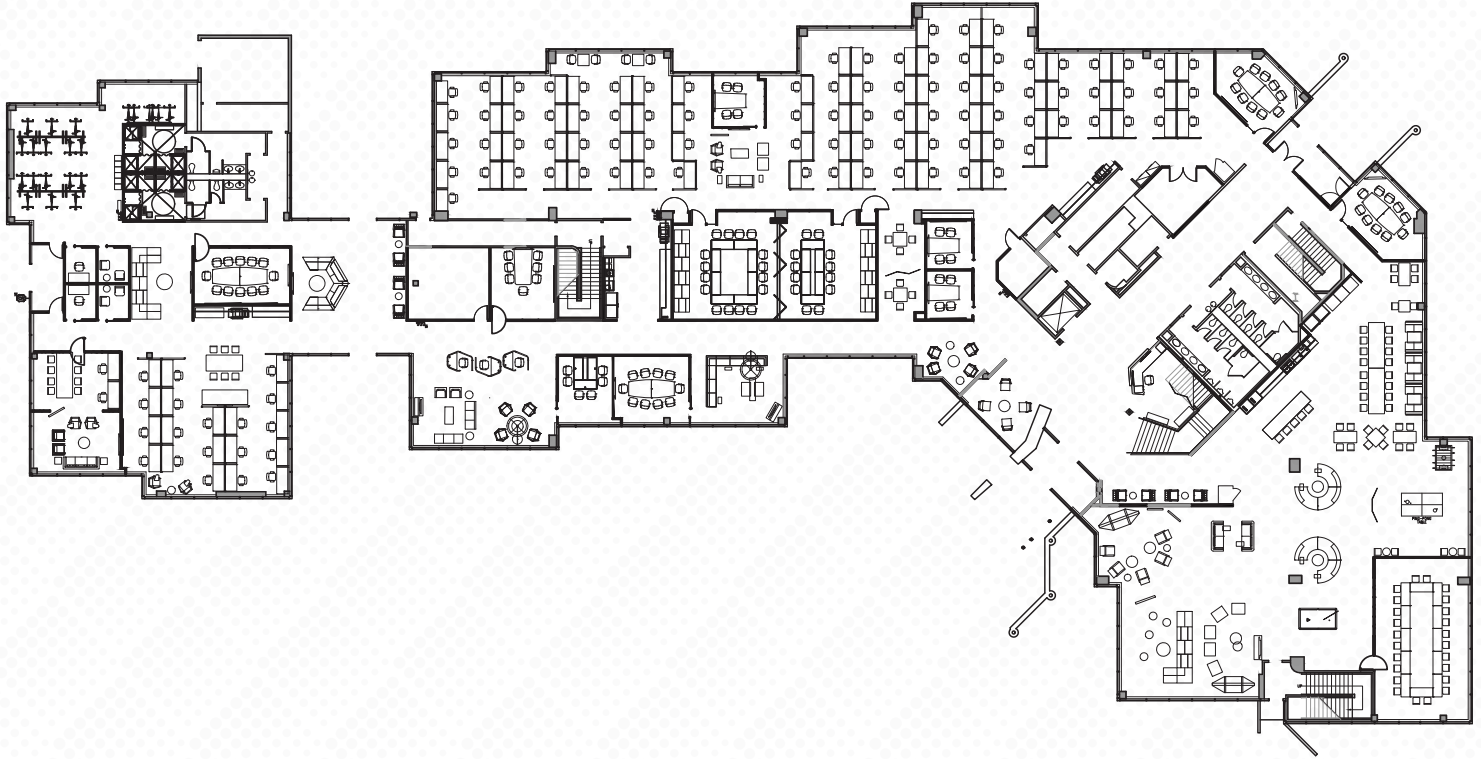
OWNERSHIP

Locally owned and
managed by Lake
Washington Partners

COMMONS 90

RECREATION & GAME ROOM

FIRST FLOOR / 26,521 RSF



NEW TRAINING & CONFERENCE CENTER

SECOND FLOOR / 24,862 RSF



BIKE STORAGE ROOM



KITCHEN & BREAK ROOM

THIRD FLOOR / 24,733 RSF



COURTYARD AREA



FITNESS ROOM

LOCAL CORPORATE NEIGHBORS

6

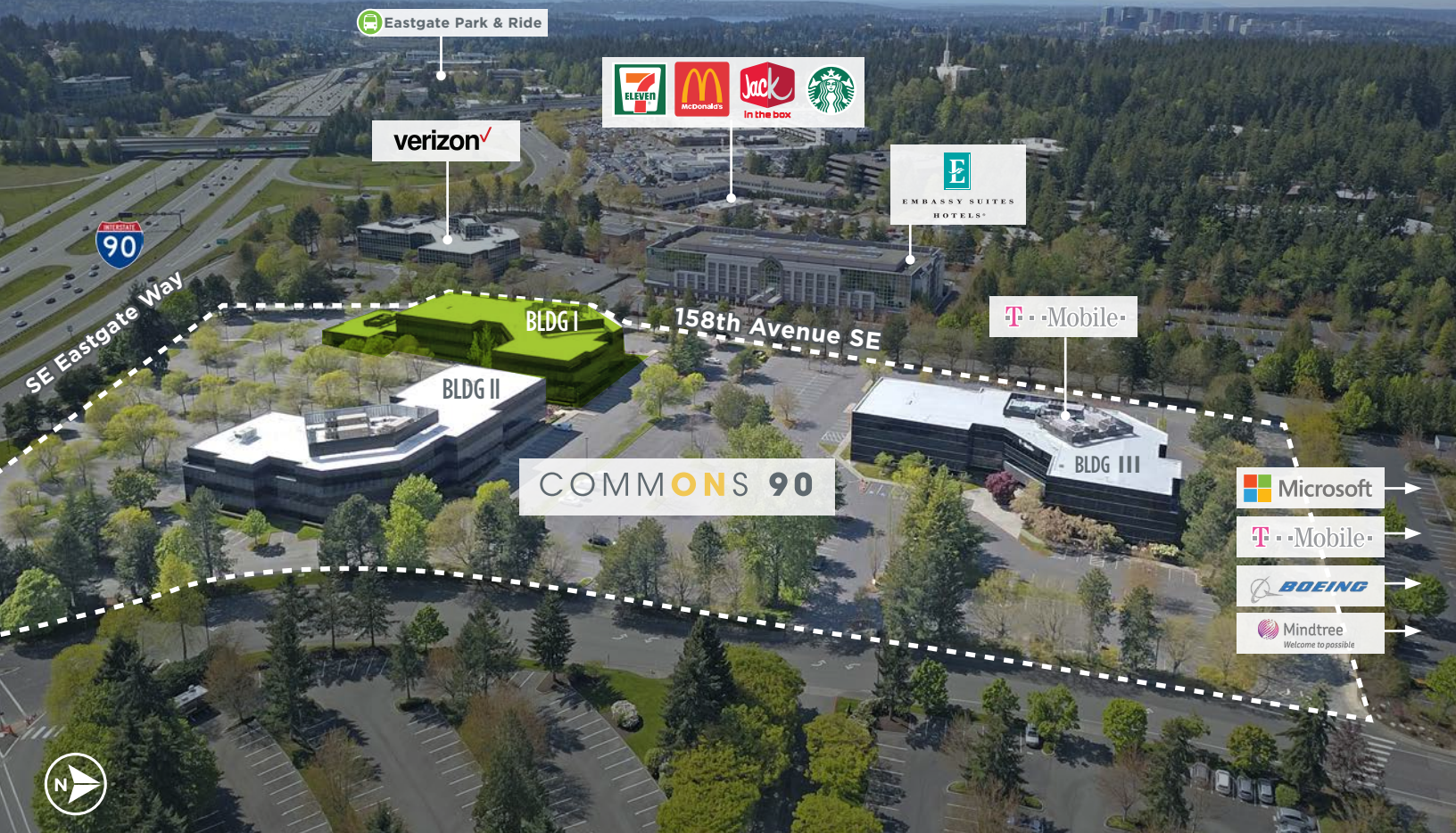
MINUTES
TO MARKETPLACE
@ FACTORIA

15

MINUTES
TO SEATTLE

9

MINUTES
TO BELLEVUE



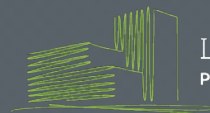
FOR MORE INFORMATION PLEASE CONTACT:

JEFF JOCHUMS

Senior Vice President
+1 425 462 6971
jeff.jochums@cbre.com

ROBERT BAKER

Client Services Specialist
+1 425 462 6974
robert.baker@cbre.com



Lake Washington
PARTNERS

CBRE

CBRE, Inc. | 929 108th | Suite 500 | Bellevue, WA 98004

© 2019 CBRE, Inc. This information has been obtained from sources believed reliable. We have not verified it and make no guarantee, warranty or representation about it. Any projections, opinions, assumptions or estimates used are for example only and do not represent the current or future performance of the property. You and your advisors should conduct a careful, independent investigation of the property to determine to your satisfaction the suitability of the property for your needs. CBRE and the CBRE logo are service marks of CBRE, Inc. and/or its affiliated or related companies in the United States and other countries. All other marks displayed on this document are the property of their respective owners. Photos herein are the property of their respective owners and use of these images without the express written content of the owner is prohibited. PMStudio_September_2019