

TURN-KEY
275 - 1,700 SF
FLEXIBLE TERMS



PREMIER PROPERTY LOCATION

CLICK TO VIEW MAP



Sansone Pecos & Wigwam

2649 Wigwam Parkway
Henderson, NV 89074

AVAILABLE NOW

1,700 SF OFFICE / MEDICAL

- Corner space with lots of windows
- Reception, 2 bathrooms, 6 offices, breakroom, and wood floor lobby
- Easy Ingress and Egress
- Pylon and Building Signage Available
- Ample Parking and Covered Parking

275 SF Private Office with Bathroom Available

RATES STARTING AT:

- \$1.55 per square foot NNN

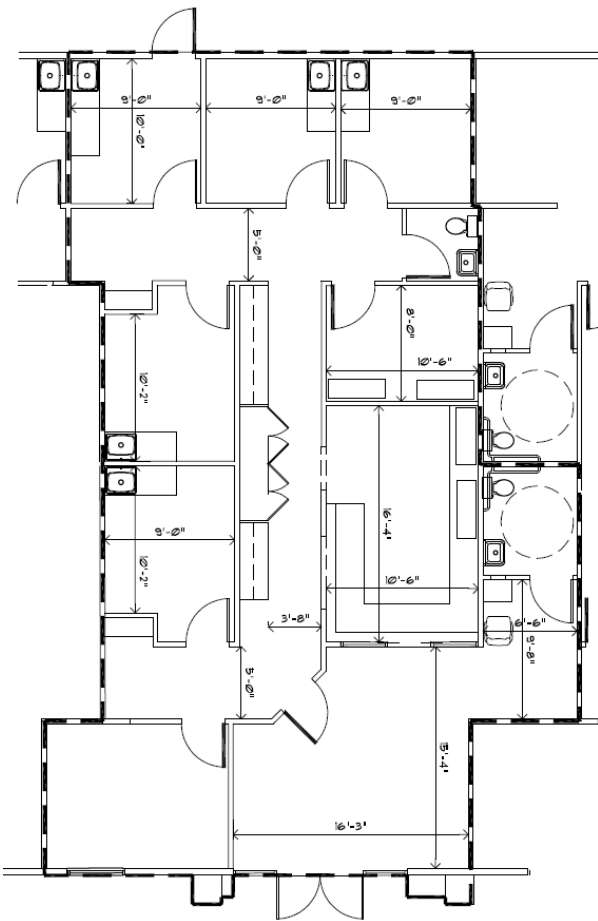
FOR OTHER SANSONE LOCATIONS

Please call us or visit our website: [Click Here](#)

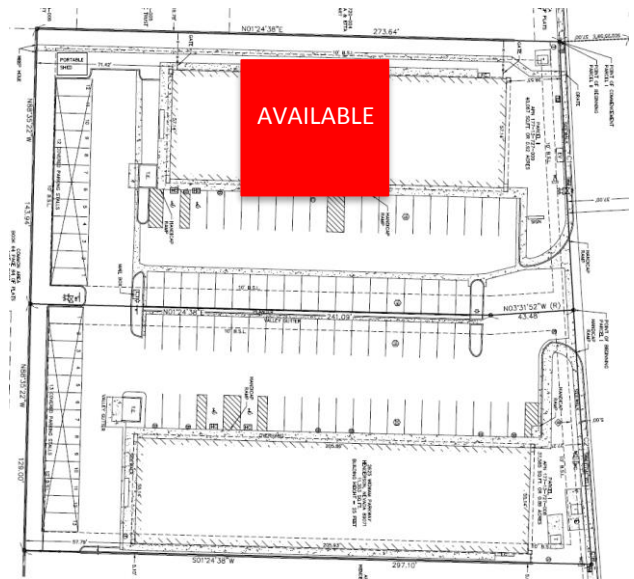


PROPERTY FLOOR PLANS

1,700 SF OFFICE / MEDICAL



SITEPLAN



WIGWAM

LOCATION DEMOGRAPHICS

	1 MILE	3 MILES	5 MILES
POPULATION	80,000	120,000	140,000
HH INCOME	\$69,000	\$89,000	\$109,000
TRAFFIC COUNT	50,000 Cars on Pecos		

FOR OTHER SANSONE LOCATIONS

Please call us or visit our website: [Click Here](#)