

Property Profile

VACANT LAND AVAILABLE



32946 23 Mile Road (M-29)
Chesterfield, MI 48047



Focus.

Strategy.

Results.

www.gerdomrealty.com

VACANT LAND AVAILABLE



32946 23 Mile Road (M-29), MI 48047
Chesterfield, MI 48047

Location: Southeast quadrant M-29 and Homestead Dr. **Min. Available:** 0.51 Acres

Zoning: C1; Local Commercial **Max Available:** 0.51 Acres

Total Size: 0.51 Acres **Pricing:** \$175,000

Comments: 0.51 acres of prime development land is available for sale, ground lease or build to suit. The subject is situated in eastern Macomb county, Chesterfield is the halfway point between Mt. Clemens and New Baltimore. This main corridor is heavily traveled with excellent visibility and sees over 30,000 vehicles per day. With I-94 2 miles to the west, the location provides great accessibility. This site is perfect for retail, office, medical, hospitality, or special purpose use.

	1 mi radius	3 mi radius	5 mi radius	10 min drivetime
Population	8,555	44,624	68,902	91,134
Households	3,333	17,285	25,905	34,608
Average HH Income	\$83,071	\$82,047	\$79,692	\$75,817
Employees	1,407	9,173	20,562	35,334
Median Age	42.4	37.8	37.7	37.6

Listing Agent: Joel Karboske

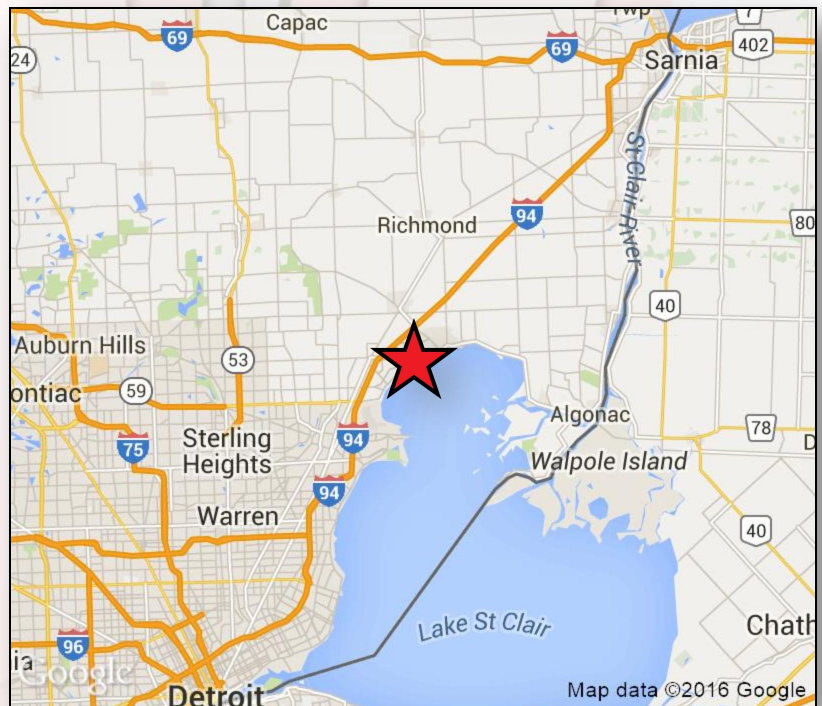
Email: jkarboske@gerdomrealty.com

Listing Agent: Michael Murphy

Email: mmurphy@gerdomrealty.com

Gerdom Realty & Investment

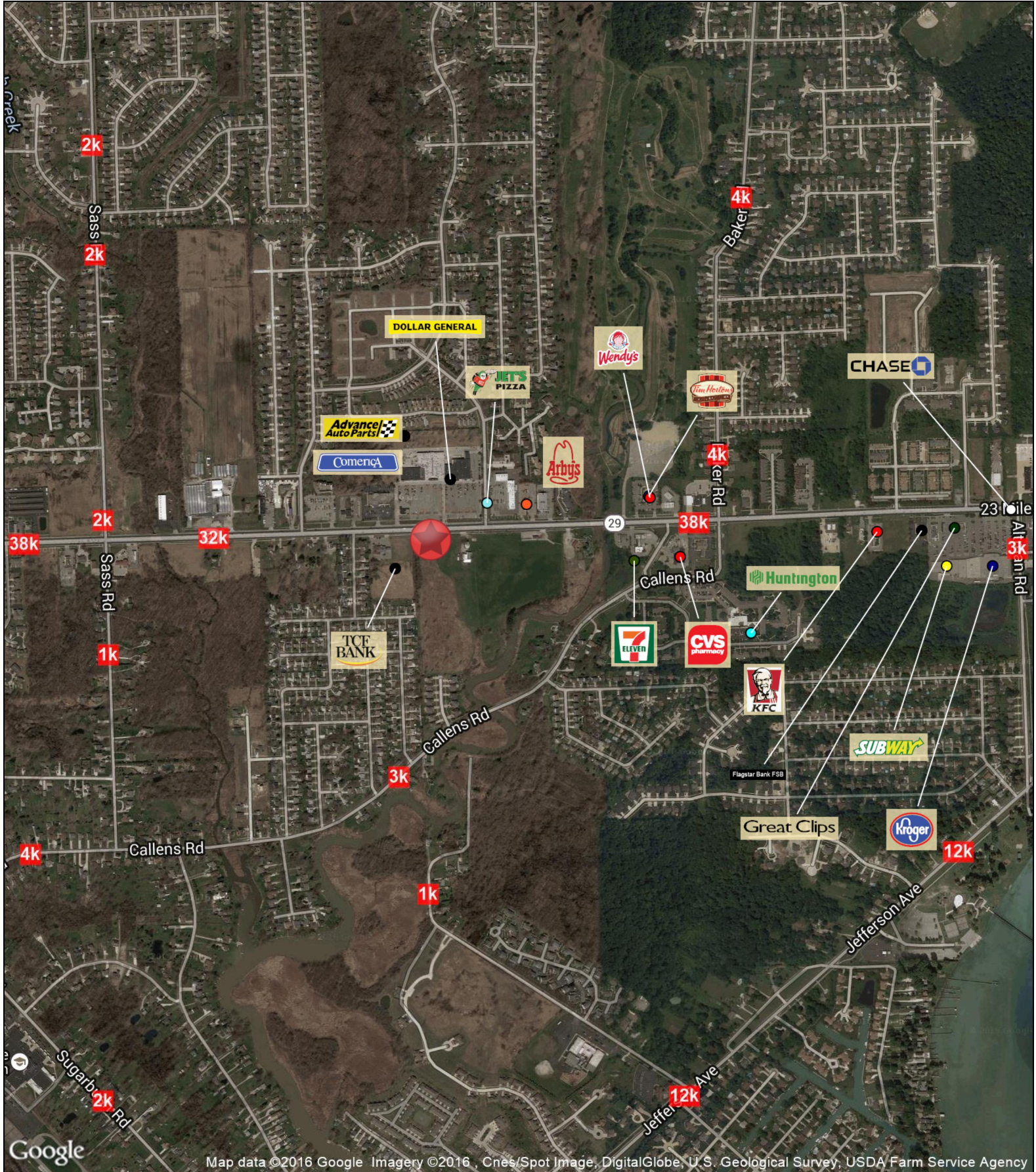
44725 Grand River Avenue, Suite 102
Novi, Michigan 48375
Phone: 248.242.6766
Fax: 866.301.9543



All information contained herein was obtained from sources deemed reliable how ever we cannot warrant or guarantee its accuracy.

Aerial Photograph

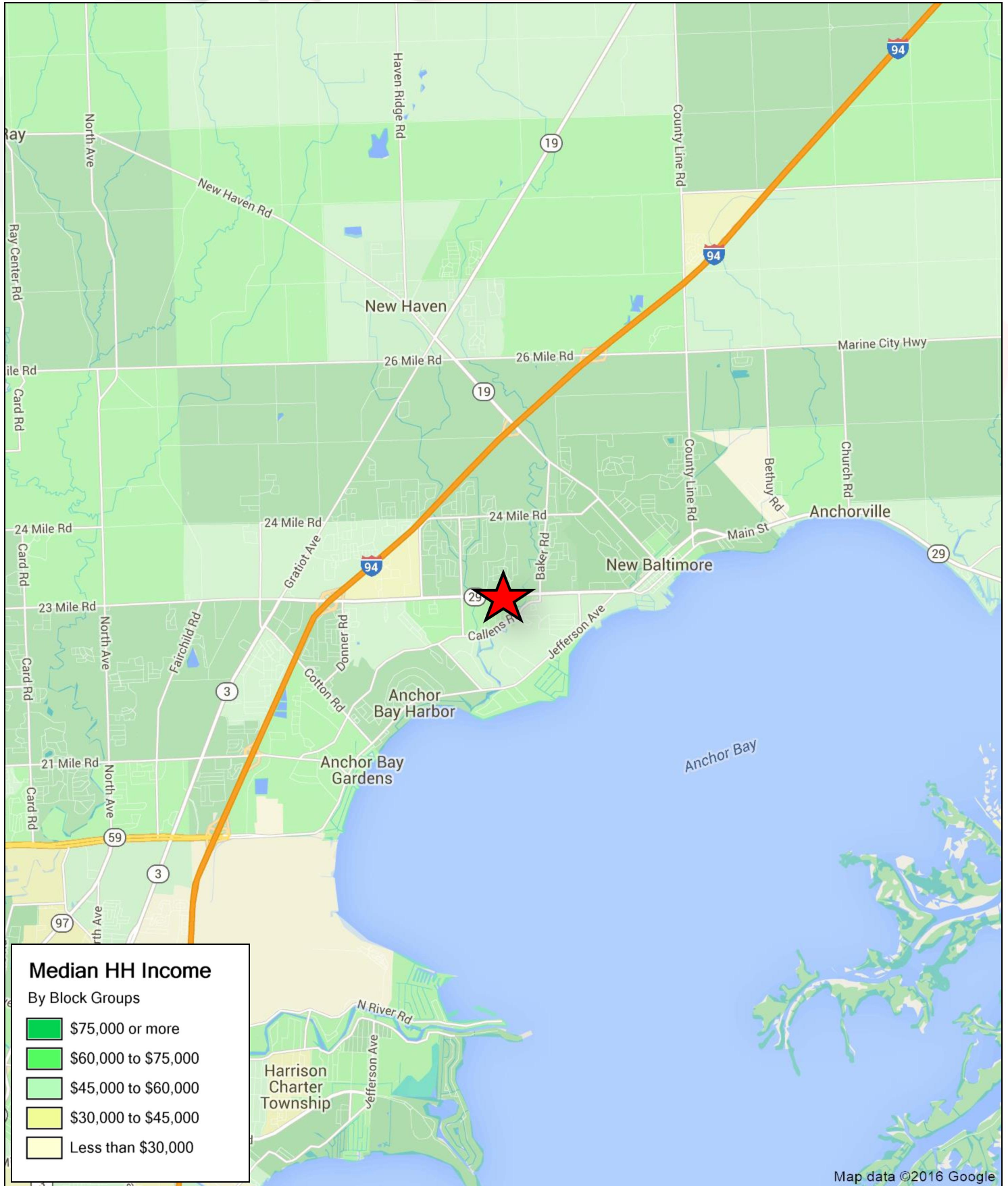
32946 23 Mile Road (M-29), MI 48047
Chesterfield, MI



Map data ©2016 Google Imagery ©2016 Cnes/Spot Image, DigitalGlobe, U.S. Geological Survey, USDA Farm Service Agency

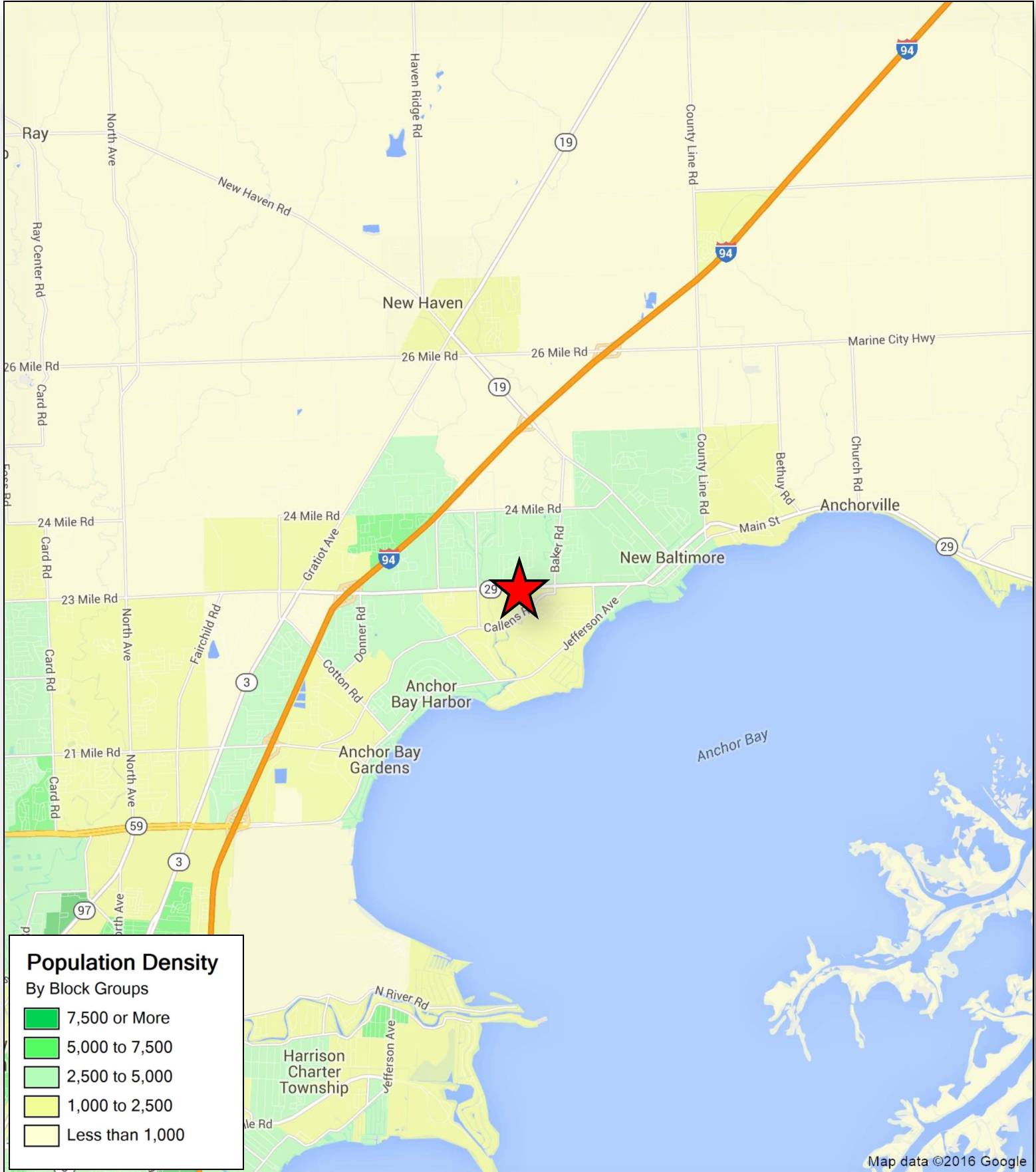
Income Density Map

32946 23 Mile Road (M-29), MI 48047
Chesterfield, MI



Population Density Map

32946 23 Mile Road (M-29), MI 48047
Chesterfield, MI



Map data ©2016 Google

Photographs

32946 23 Mile Road (M-29), MI 48047
Chesterfield, MI



Site Plan

32946 23 Mile Road (M-29), MI 48047
Chesterfield, MI



FULL PROFILE

2000-2010 Census, 2016 Estimates with 2021 Projections

Calculated using Weighted Block Centroid from Block Groups



Lat/Lon: 42.6753/-82.7764

RF1

32946-33190 M-29

New Baltimore, MI 48047

	1 mi radius	3 mi radius	5 mi radius	10 min drivetime	
POPULATION	2016 Estimated Population	8,555	44,624	68,902	91,134
	2021 Projected Population	8,724	45,315	69,827	92,379
	2010 Census Population	8,598	43,766	67,445	87,175
	2000 Census Population	6,987	33,799	56,610	74,584
	Projected Annual Growth 2016 to 2021	0.4%	0.3%	0.3%	0.3%
	Historical Annual Growth 2000 to 2016	1.4%	2.0%	1.4%	1.4%
HOUSEHOLDS	2016 Estimated Households	3,333	17,285	25,905	34,608
	2021 Projected Households	3,482	17,983	26,894	35,935
	2010 Census Households	3,245	16,384	24,530	32,047
	2000 Census Households	2,548	12,373	20,153	27,237
	Projected Annual Growth 2016 to 2021	0.9%	0.8%	0.8%	0.8%
	Historical Annual Growth 2000 to 2016	1.9%	2.5%	1.8%	1.7%
AGE	2016 Est. Population Under 10 Years	11.3%	13.1%	12.9%	13.0%
	2016 Est. Population 10 to 19 Years	13.4%	14.2%	14.1%	13.8%
	2016 Est. Population 20 to 29 Years	9.3%	11.2%	11.7%	12.0%
	2016 Est. Population 30 to 44 Years	19.8%	21.5%	21.7%	21.2%
	2016 Est. Population 45 to 59 Years	22.8%	21.6%	22.2%	21.9%
	2016 Est. Population 60 to 74 Years	16.1%	13.6%	13.2%	13.5%
	2016 Est. Population 75 Years or Over	7.4%	4.6%	4.3%	4.5%
	2016 Est. Median Age	42.4	37.8	37.7	37.6
MARITAL STATUS & GENDER	2016 Est. Male Population	48.1%	48.7%	49.9%	49.9%
	2016 Est. Female Population	51.9%	51.3%	50.1%	50.1%
	2016 Est. Never Married	24.5%	27.2%	28.3%	29.7%
	2016 Est. Now Married	53.3%	53.9%	52.7%	50.3%
	2016 Est. Separated or Divorced	10.7%	12.3%	13.4%	14.2%
	2016 Est. Widowed	11.4%	6.6%	5.6%	5.8%
INCOME	2016 Est. HH Income \$200,000 or More	5.2%	3.8%	3.5%	3.3%
	2016 Est. HH Income \$150,000 to \$199,999	6.3%	6.7%	6.2%	6.0%
	2016 Est. HH Income \$100,000 to \$149,999	18.6%	21.2%	19.5%	18.5%
	2016 Est. HH Income \$75,000 to \$99,999	16.4%	15.8%	16.8%	15.2%
	2016 Est. HH Income \$50,000 to \$74,999	23.7%	18.8%	19.2%	18.5%
	2016 Est. HH Income \$35,000 to \$49,999	14.3%	11.3%	11.4%	11.3%
	2016 Est. HH Income \$25,000 to \$34,999	5.3%	8.1%	7.9%	8.1%
	2016 Est. HH Income \$15,000 to \$24,999	6.8%	9.2%	9.3%	10.4%
	2016 Est. HH Income Under \$15,000	3.4%	5.0%	6.3%	8.7%
	2016 Est. Average Household Income	\$83,071	\$82,047	\$79,692	\$75,817
	2016 Est. Median Household Income	\$72,707	\$72,615	\$70,842	\$67,229
	2016 Est. Per Capita Income	\$32,437	\$31,806	\$30,279	\$29,155
2016 Est. Total Businesses	204	1,112	2,094	3,441	
2016 Est. Total Employees	1,407	9,173	20,562	35,334	

This report was produced using data from private and government sources deemed to be reliable. The information herein is provided without representation or warranty.

FULL PROFILE

2000-2010 Census, 2016 Estimates with 2021 Projections

Calculated using Weighted Block Centroid from Block Groups



Lat/Lon: 42.6753/-82.7764

RF1

32946-33190 M-29

New Baltimore, MI 48047

1 mi radius 3 mi radius 5 mi radius 10 min drivetime

	1 mi radius	3 mi radius	5 mi radius	10 min drivetime	
RACE	2016 Est. White	92.0%	87.9%	86.6%	83.7%
	2016 Est. Black	4.4%	7.3%	8.5%	10.9%
	2016 Est. Asian or Pacific Islander	1.4%	1.7%	1.7%	1.8%
	2016 Est. American Indian or Alaska Native	0.3%	0.3%	0.3%	0.4%
	2016 Est. Other Races	1.8%	2.7%	2.9%	3.2%
HISPANIC	2016 Est. Hispanic Population	157	1,161	2,037	2,920
	2016 Est. Hispanic Population	1.8%	2.6%	3.0%	3.2%
	2021 Proj. Hispanic Population	2.5%	3.4%	3.8%	4.1%
	2010 Hispanic Population	1.5%	2.2%	2.6%	2.8%
EDUCATION (Adults 25 or Older)	2016 Est. Adult Population (25 Years or Over)	6,010	29,909	46,315	61,138
	2016 Est. Elementary (Grade Level 0 to 8)	1.6%	2.4%	2.5%	2.5%
	2016 Est. Some High School (Grade Level 9 to 11)	4.5%	6.3%	6.6%	7.1%
	2016 Est. High School Graduate	29.7%	28.7%	30.2%	30.5%
	2016 Est. Some College	24.4%	24.8%	25.9%	26.1%
	2016 Est. Associate Degree Only	11.7%	13.0%	12.4%	11.9%
	2016 Est. Bachelor Degree Only	18.9%	16.6%	15.0%	14.6%
	2016 Est. Graduate Degree	9.2%	8.2%	7.3%	7.4%
HOUSING	2016 Est. Total Housing Units	3,449	17,867	26,905	35,891
	2016 Est. Owner-Occupied	85.4%	77.8%	78.6%	76.8%
	2016 Est. Renter-Occupied	11.2%	19.0%	17.7%	19.6%
	2016 Est. Vacant Housing	3.4%	3.3%	3.7%	3.6%
HOMES BUILT BY YEAR	2010 Homes Built 2005 or later	3.7%	5.4%	6.0%	6.5%
	2010 Homes Built 2000 to 2004	11.5%	18.0%	16.1%	14.9%
	2010 Homes Built 1990 to 1999	24.6%	20.7%	22.5%	21.1%
	2010 Homes Built 1980 to 1989	15.8%	14.4%	14.1%	13.3%
	2010 Homes Built 1970 to 1979	23.1%	17.7%	16.1%	15.2%
	2010 Homes Built 1960 to 1969	6.6%	7.2%	7.2%	8.3%
	2010 Homes Built 1950 to 1959	7.6%	7.7%	8.0%	9.1%
	2010 Homes Built Before 1949	7.2%	8.9%	10.1%	11.6%
HOME VALUES	2010 Home Value \$1,000,000 or More	0.5%	0.7%	0.6%	0.6%
	2010 Home Value \$500,000 to \$999,999	1.3%	1.8%	1.5%	1.4%
	2010 Home Value \$400,000 to \$499,999	1.0%	1.3%	1.5%	1.5%
	2010 Home Value \$300,000 to \$399,999	5.1%	5.6%	5.0%	5.1%
	2010 Home Value \$200,000 to \$299,999	21.4%	20.1%	18.9%	18.7%
	2010 Home Value \$150,000 to \$199,999	28.2%	24.3%	23.5%	21.5%
	2010 Home Value \$100,000 to \$149,999	17.6%	17.9%	17.1%	17.2%
	2010 Home Value \$50,000 to \$99,999	16.3%	16.9%	17.2%	18.0%
	2010 Home Value \$25,000 to \$49,999	4.4%	4.8%	5.7%	6.3%
	2010 Home Value Under \$25,000	4.2%	6.5%	8.9%	9.7%
	2010 Median Home Value	\$161,046	\$150,448	\$142,273	\$140,028
	2010 Median Rent	\$694	\$636	\$628	\$573

This report was produced using data from private and government sources deemed to be reliable. The information herein is provided without representation or warranty.

FULL PROFILE

2000-2010 Census, 2016 Estimates with 2021 Projections

Calculated using Weighted Block Centroid from Block Groups



Lat/Lon: 42.6753/-82.7764

RF1

32946-33190 M-29

New Baltimore, MI 48047

	1 mi radius	3 mi radius	5 mi radius	10 min drivetime	
LABOR FORCE	2016 Est. Labor Population Age 16 Years or Over	6,877	34,769	53,974	71,491
	2016 Est. Civilian Employed	62.6%	66.0%	64.4%	62.5%
	2016 Est. Civilian Unemployed	2.8%	3.4%	3.5%	3.8%
	2016 Est. in Armed Forces	0.2%	0.2%	0.2%	0.2%
	2016 Est. not in Labor Force	34.4%	30.4%	32.0%	33.6%
	2016 Labor Force Males	47.3%	48.2%	49.6%	49.6%
	2016 Labor Force Females	52.7%	51.8%	50.4%	50.4%
OCCUPATION	2010 Occupation: Population Age 16 Years or Over	3,846	19,949	29,958	38,083
	2010 Mgmt, Business, & Financial Operations	16.7%	14.3%	14.1%	13.9%
	2010 Professional, Related	19.8%	20.5%	19.5%	19.4%
	2010 Service	15.9%	16.8%	16.6%	17.0%
	2010 Sales, Office	27.2%	27.6%	27.0%	26.5%
	2010 Farming, Fishing, Forestry	0.1%	0.3%	0.3%	0.3%
	2010 Construction, Extraction, Maintenance	7.7%	8.4%	8.7%	8.7%
	2010 Production, Transport, Material Moving	12.6%	12.2%	13.7%	14.3%
	2010 White Collar Workers	63.6%	62.4%	60.6%	59.7%
	2010 Blue Collar Workers	36.4%	37.6%	39.4%	40.3%
TRANSPORTATION TO WORK	2010 Drive to Work Alone	84.5%	86.0%	85.7%	85.9%
	2010 Drive to Work in Carpool	9.4%	8.4%	9.1%	9.1%
	2010 Travel to Work by Public Transportation	1.8%	0.6%	0.5%	0.6%
	2010 Drive to Work on Motorcycle	0.1%	0.2%	0.1%	0.1%
	2010 Walk or Bicycle to Work	0.6%	1.1%	1.2%	1.2%
	2010 Other Means	0.2%	0.4%	0.3%	0.3%
	2010 Work at Home	3.4%	3.4%	3.1%	2.7%
TRAVEL TIME	2010 Travel to Work in 14 Minutes or Less	16.7%	20.5%	20.6%	20.9%
	2010 Travel to Work in 15 to 29 Minutes	28.3%	29.6%	30.0%	30.3%
	2010 Travel to Work in 30 to 59 Minutes	43.1%	39.4%	39.7%	39.3%
	2010 Travel to Work in 60 Minutes or More	11.9%	10.4%	9.8%	9.5%
	2010 Average Travel Time to Work	29.7	27.7	27.5	27.4
CONSUMER EXPENDITURE	2016 Est. Total Household Expenditure	\$208 M	\$1.06 B	\$1.56 B	\$2.01 B
	2016 Est. Apparel	\$7.24 M	\$37.0 M	\$54.3 M	\$69.9 M
	2016 Est. Contributions, Gifts	\$14.2 M	\$72.6 M	\$105 M	\$135 M
	2016 Est. Education, Reading	\$8.03 M	\$41.8 M	\$60.7 M	\$78.0 M
	2016 Est. Entertainment	\$11.7 M	\$60.1 M	\$88.1 M	\$113 M
	2016 Est. Food, Beverages, Tobacco	\$31.5 M	\$162 M	\$238 M	\$306 M
	2016 Est. Furnishings, Equipment	\$7.27 M	\$37.2 M	\$54.5 M	\$69.7 M
	2016 Est. Health Care, Insurance	\$17.9 M	\$91.9 M	\$135 M	\$175 M
	2016 Est. Household Operations, Shelter, Utilities	\$64.1 M	\$329 M	\$482 M	\$621 M
	2016 Est. Miscellaneous Expenses	\$3.05 M	\$15.6 M	\$23.0 M	\$29.6 M
	2016 Est. Personal Care	\$2.69 M	\$13.8 M	\$20.3 M	\$26.0 M
	2016 Est. Transportation	\$39.8 M	\$203 M	\$299 M	\$384 M

This report was produced using data from private and government sources deemed to be reliable. The information herein is provided without representation or warranty.