



# Meridian Professional Center

2930 S MERIDIAN | PUYALLUP, WA

## FOR LEASE



**Kidder Mathews**



**WILL FRAME**  
253.722.1412  
[will.frame@kidder.com](mailto:will.frame@kidder.com)

**DREW FRAME**  
253.722.1433  
[drew.frame@kidder.com](mailto:drew.frame@kidder.com)

This information supplied herein is from sources we deem reliable. It is provided without any representation, warranty, or guarantee, expressed or implied as to its accuracy. Prospective Buyer or Tenant should conduct an independent investigation and verification of all matters deemed to be material, including, but not limited to, statements of income and expenses. Consult your attorney, accountant, or other professional advisor.

FOR LEASE

# Meridian Professional Center

2930 S MERIDIAN | PUYALLUP, WA



**CLASS A OFFICE/MEDICAL CAMPUS** Located Between Good Sam Hospital & South Hill Mall

**SUITE 340** 2,008 SF available

**LEASE RATE** of \$27.50 - \$30.00/RSF/Year, NNN

**PLEASE JOIN** CDI Imaging, Out Patient Physical Therapy, NexTitle, WFG National Title and Franciscan Medical Clinic

**GREAT SIGNAGE** fronting on S. Meridian with 4.25/1000 parking

**EASY** access to Highway 512

**100%** leased to Rainier Oncology

**BTS** with Rainier Oncology

**WILL FRAME**  
253.722.1412  
will.frame@kidder.com

**DREW FRAME**  
253.722.1433  
drew.frame@kidder.com

FOR LEASE

# Meridian Professional Center

2930 S MERIDIAN | PUYALLUP, WA



**FOR LEASE**

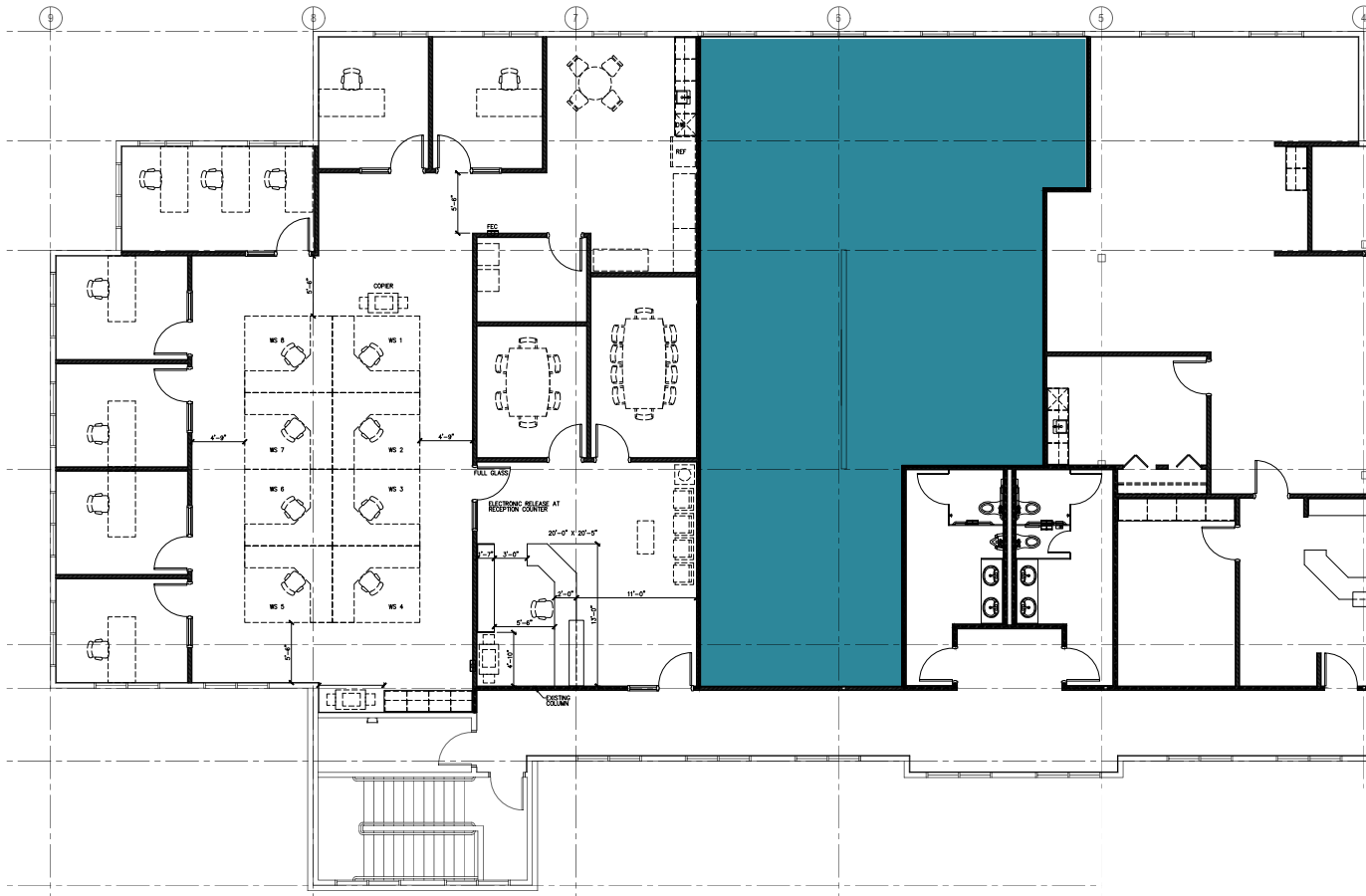
# Meridian Professional Center

2930 S MERIDIAN | PUYALLUP, WA

## Suite 340

# 2,008 SF

AVAILABLE



**WILL FRAME**

253.722.1412

[will.frame@kidder.com](mailto:will.frame@kidder.com)

**DREW FRAME**

253.722.1433

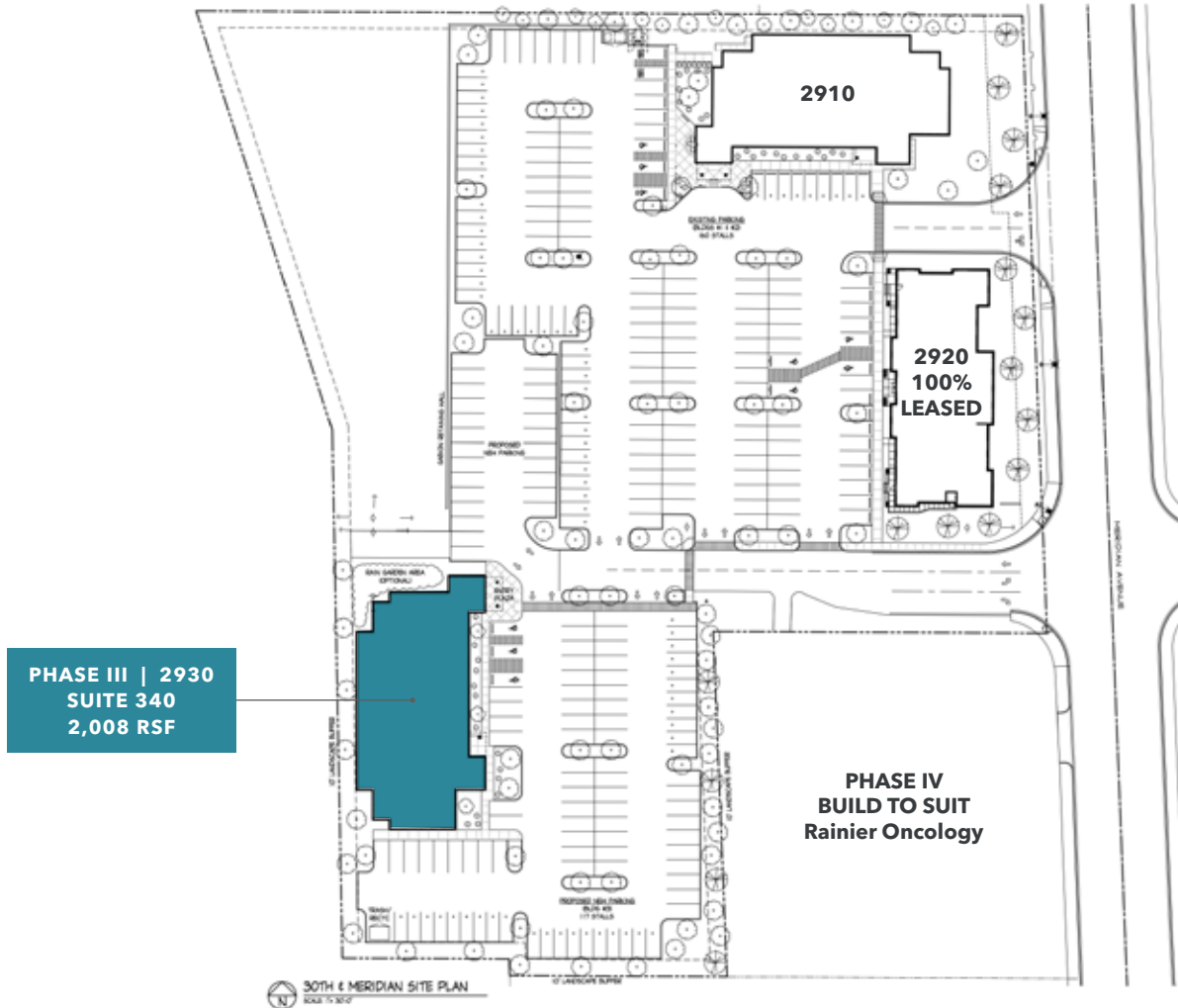
[drew.frame@kidder.com](mailto:drew.frame@kidder.com)

**FOR LEASE**

# Meridian Professional Center

2930 S MERIDIAN | PUYALLUP, WA

## Building Plans



**WILL FRAME**  
253.722.1412  
[will.frame@kidder.com](mailto:will.frame@kidder.com)

**DREW FRAME**  
253.722.1433  
[drew.frame@kidder.com](mailto:drew.frame@kidder.com)