

7,810 SF OFFICE / WAREHOUSE / SERVICE CENTER

AVAILABLE FOR LEASE

1849-1897 CRAIG ROAD | SAINT LOUIS, MISSOURI 63146



7,810 SF Office / Warehouse / Service Center

- 1849-1851 Craig Road
- Newly retrofitted office / warehouse
- Recently renovated common area restrooms
- Two 11'x14' grade-level drive-ins (with access to dock platform)
- 100% air conditioned
- Excellent Craig Road visibility and access
- Located just south of Page Ave near I-270
- Less than five minutes from Creve Coeur and Westport Plaza amenities
- **LEASE RATE: \$7.75 PSF NNN**

For additional information, please contact:

TONY GIARRATANO

tony@hutkin.com

314.708.4922 o.

314.276.2352 m.

BO KEEFER

bkeef@hutkin.com

314.708.1258 o.

314.973.1242 m.

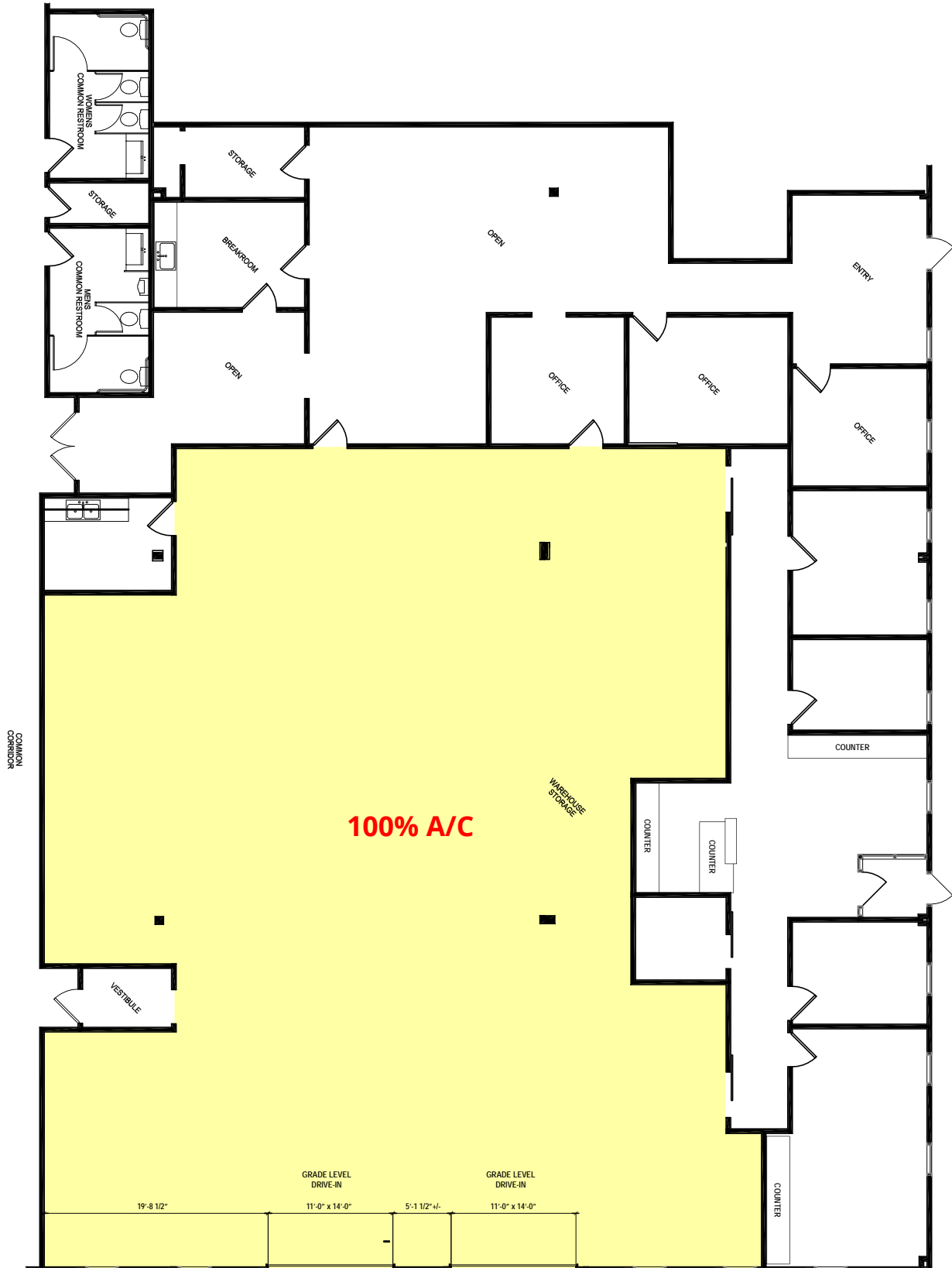
HUTKIN
DEVELOPMENT COMPANY

10829 OLIVE BOULEVARD, SUITE 200
ST. LOUIS, MISSOURI 63141
314.872.9140 PHONE
314.872.9001 FAX
WWW.HUTKIN.COM

7,810 SF OFFICE / WAREHOUSE / SERVICE CENTER

AVAILABLE FOR LEASE

1849-1897 CRAIG ROAD | SAINT LOUIS, MISSOURI 63146



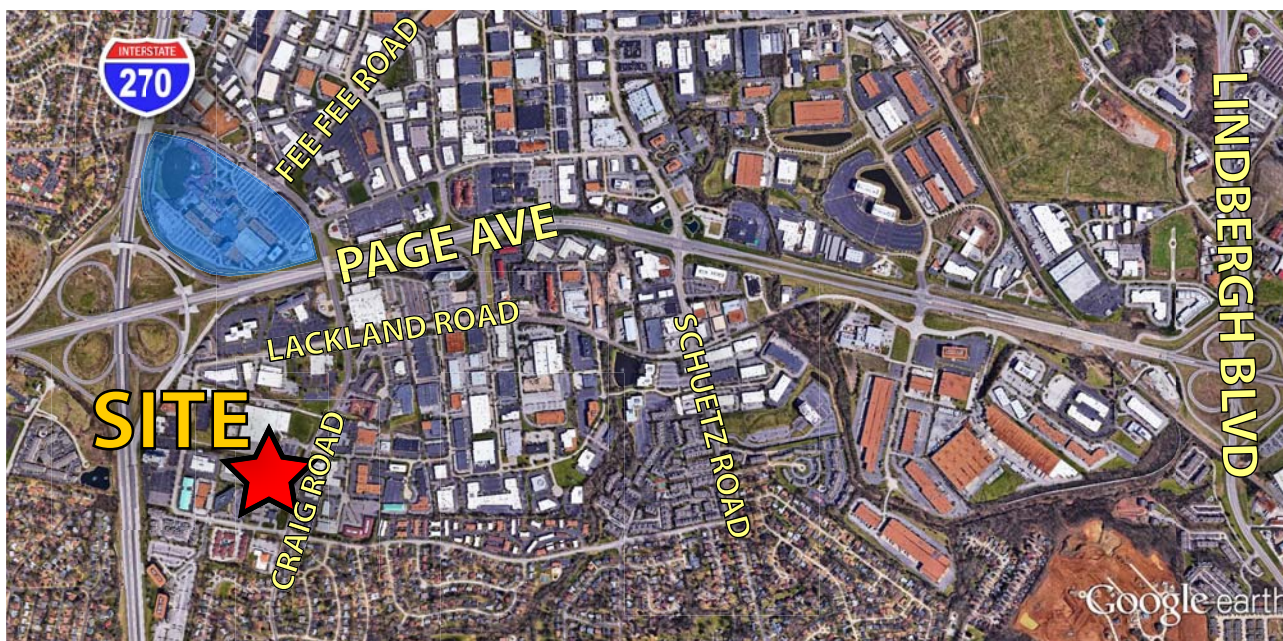
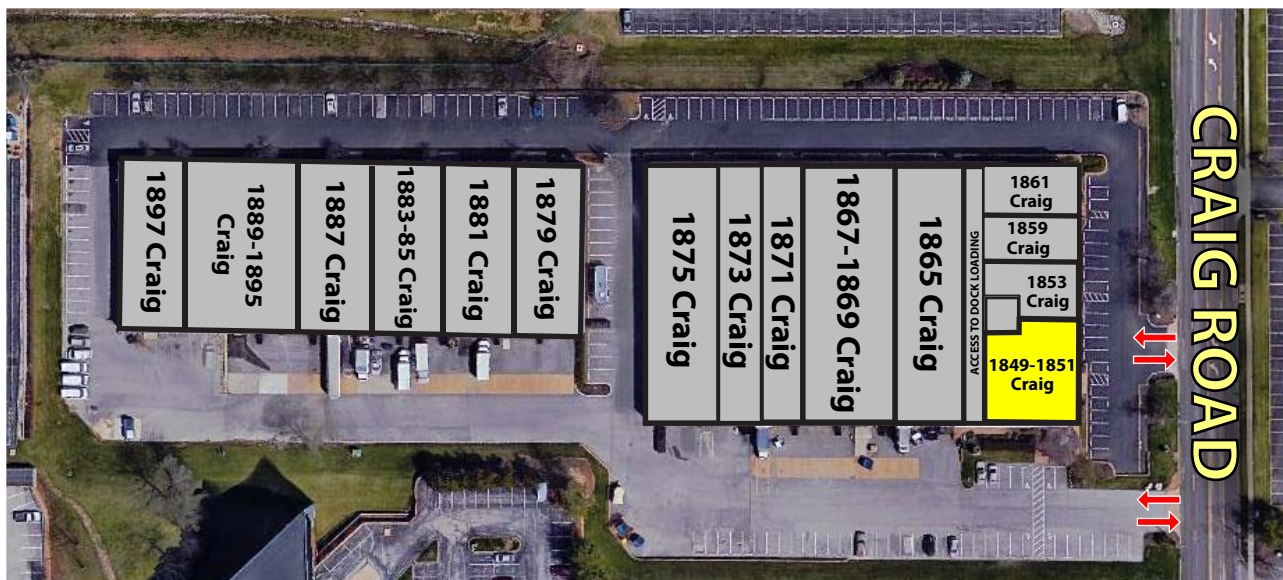
1849-1851 CRAIG ROAD

7,810 SF

7,810 SF OFFICE / WAREHOUSE / SERVICE CENTER

AVAILABLE FOR LEASE

1849-1897 CRAIG ROAD | SAINT LOUIS, MISSOURI 63146



2,688 SF OFFICE / SHOWROOM SPACE

AVAILABLE FOR LEASE

1849-1897 CRAIG ROAD | SAINT LOUIS, MISSOURI 63146



2,688 SF Office / Showroom

- 1859 Craig Road
- Access to dock loading
- Excellent Craig Road visibility and access
- Located just south of Page Ave near I-270
- Less than five minutes from Creve Coeur and Westport Plaza amenities
- **LEASE RATE: \$7.50 PSF NNN**

For additional information, please contact:

TONY GIARRATANO

tony@hutkin.com

314.708.4922 o.

314.276.2352 m.

BO KEEFER

bkeef@hutkin.com

314.708.1258 o.

314.973.1242 m.

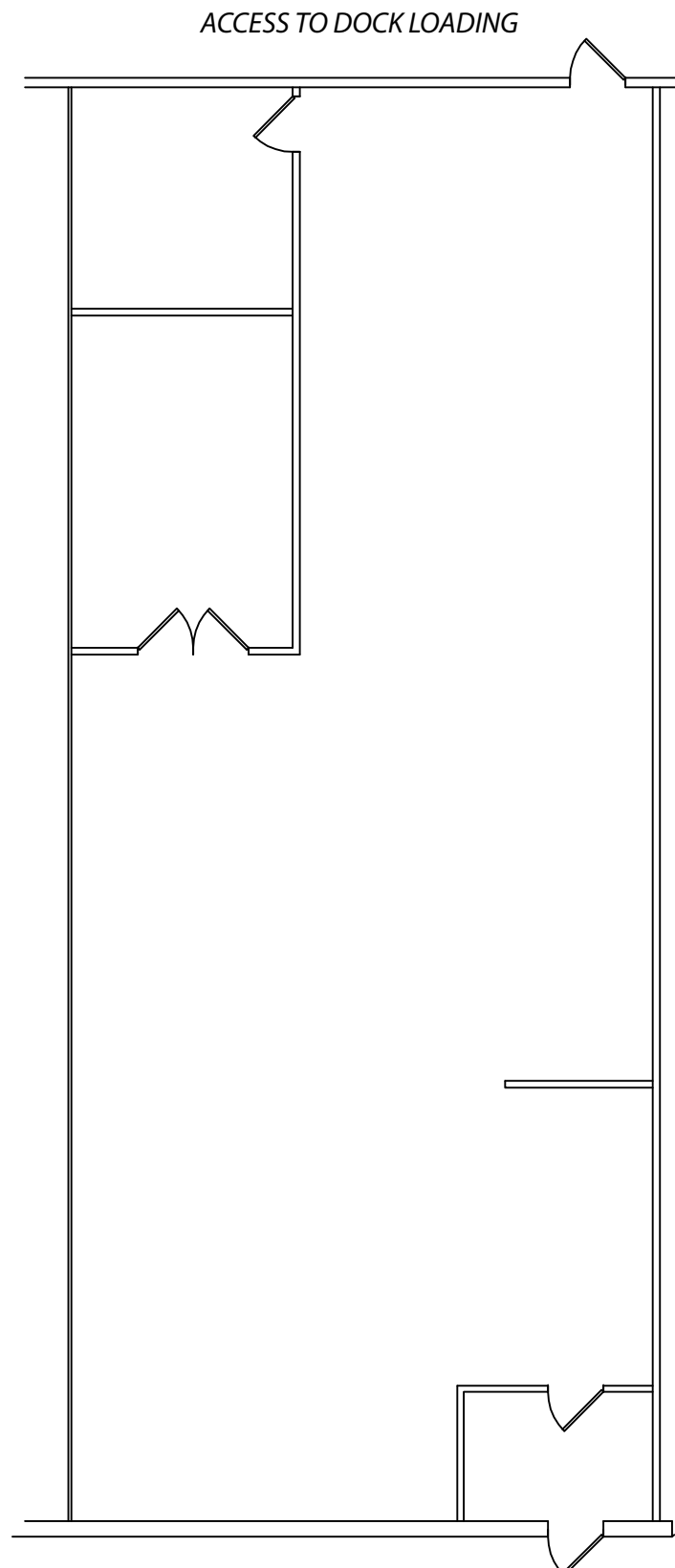
HUTKIN
DEVELOPMENT COMPANY

10829 OLIVE BOULEVARD, SUITE 200
ST. LOUIS, MISSOURI 63141
314.872.9140 PHONE
314.872.9001 FAX
WWW.HUTKIN.COM

2,688 SF OFFICE / SHOWROOM SPACE

AVAILABLE FOR LEASE

1849-1897 CRAIG ROAD | SAINT LOUIS, MISSOURI 63146

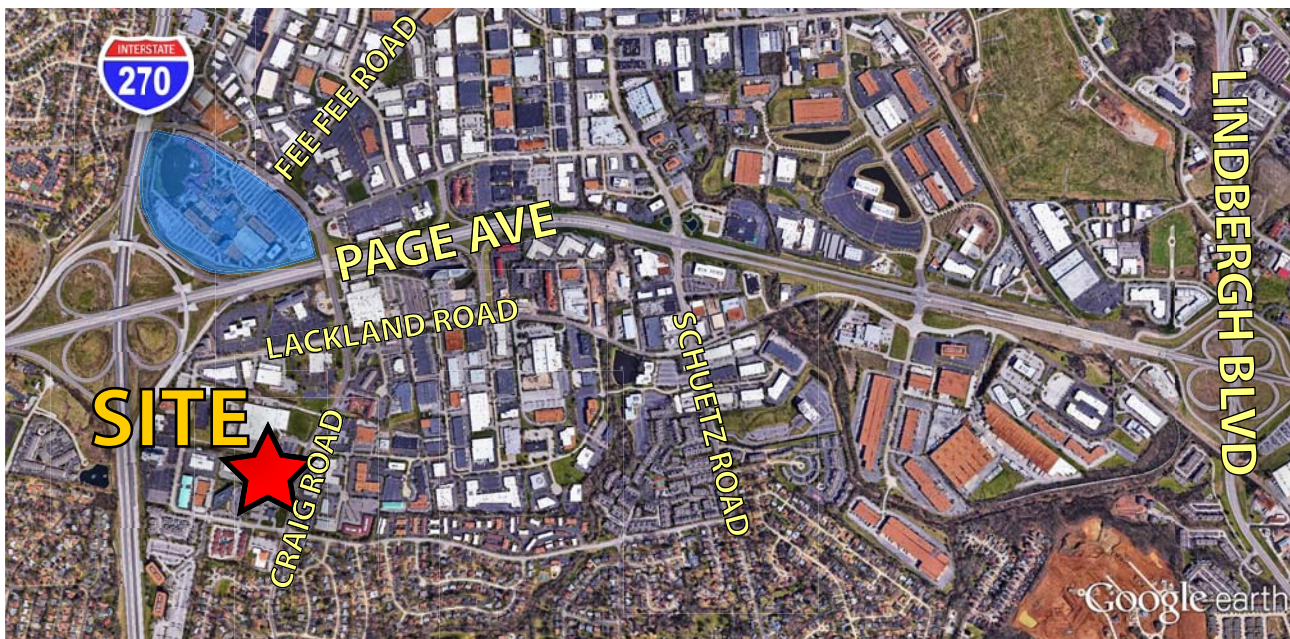
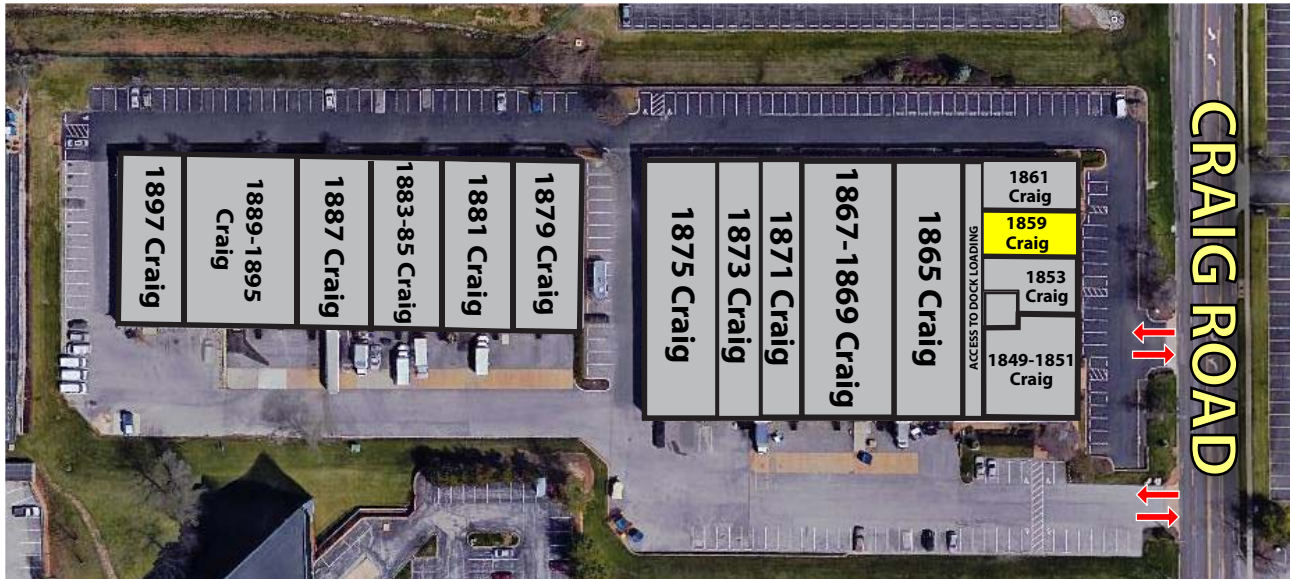


1859 CRAIG ROAD
2,688 SF

2,688 SF OFFICE / SHOWROOM SPACE

AVAILABLE FOR LEASE

1849-1897 CRAIG ROAD | SAINT LOUIS, MISSOURI 63146



4,258 SF & 6,222 SF OFFICE / WAREHOUSE SPACES

AVAILABLE FOR LEASE

1849-1897 CRAIG ROAD | SAINT LOUIS, MISSOURI 63146



6,222 SF Office / Warehouse Space Available

- 1871 Craig Road
- Approximately 10% office finish
- Dock loading
- **LEASE RATE: \$4.95 PSF NNN**

4,258 SF Office / Warehouse Space Available

- 1879 Craig Road
- 40% office buildout
- Dock loading
- **LEASE RATE: \$6.50 PSF NNN**

Property Highlights

- Located on Craig Road just south of Page Ave near I-270
- Less than five minutes from Creve Coeur and Westport Plaza amenities

For additional information, please contact:

BO KEEFER

bkeefe@hutkin.com

314.708.1258 o.

314.973.1242 m.

TONY GIARRATANO

tony@hutkin.com

314.708.4922 o.

314.276.2352 m.

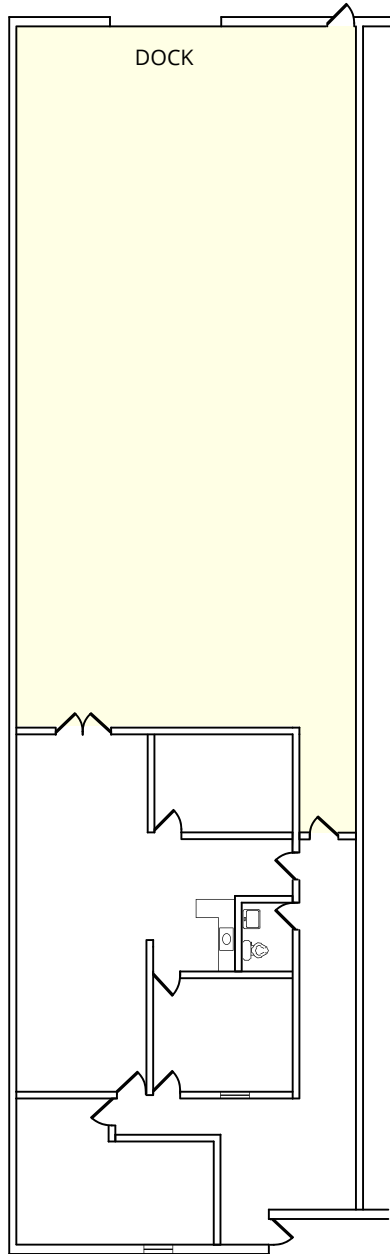
HUTKIN
DEVELOPMENT COMPANY

10829 OLIVE BOULEVARD, SUITE 200
ST. LOUIS, MISSOURI 63141
314.872.9140 PHONE
314.872.9001 FAX
WWW.HUTKIN.COM

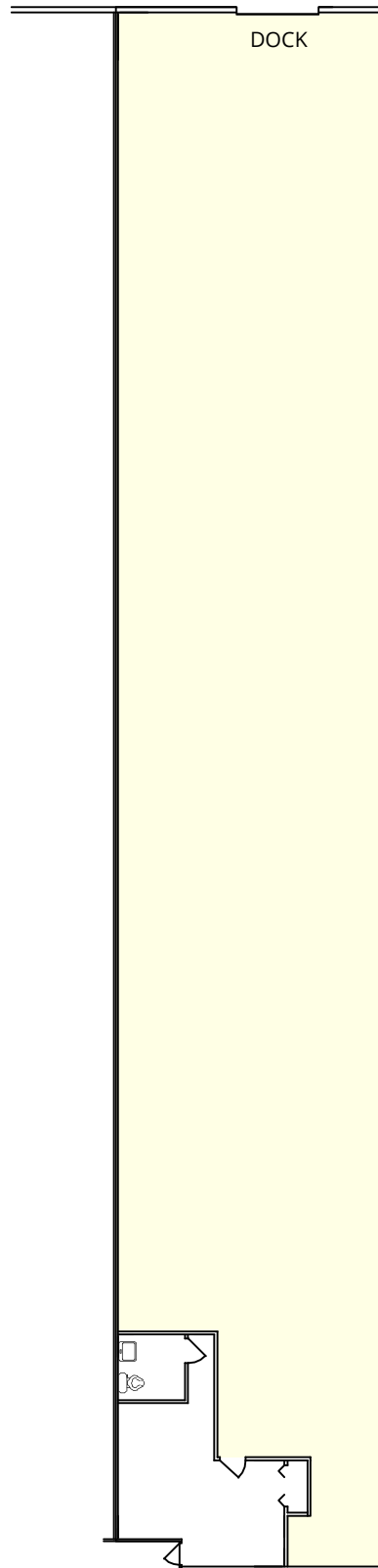
4,258 SF & 6,222 SF OFFICE / WAREHOUSE SPACES

AVAILABLE FOR LEASE

1849-1897 CRAIG ROAD | SAINT LOUIS, MISSOURI 63146



1879 CRAIG ROAD
4,258 SF



1871 CRAIG ROAD
6,222 SF

4,258 SF & 6,222 SF OFFICE / WAREHOUSE SPACES

AVAILABLE FOR LEASE

1849-1897 CRAIG ROAD | SAINT LOUIS, MISSOURI 63146

