

# METRO POINTE

2228 S Kirkman Road  
Orlando, FL 32811

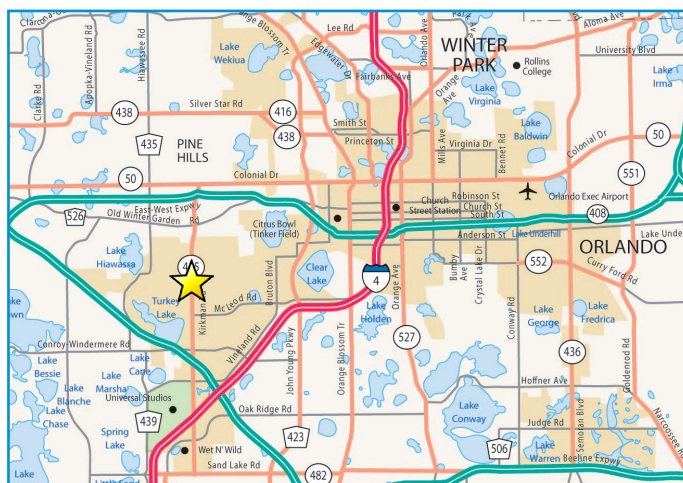
Colliers  
INTERNATIONAL



## Property Highlights

- › 1,748 - 5,520 SF available in Wal-Mart shadow-anchored center
- › Located on Kirkman Rd. near the MetroWest Blvd. intersection
- › Great visibility and access from Kirkman Road and the MetroWest community signalized
- › Monument sign space available
- › Property sees over 56,000 vehicles per day
- › Densely populated area with over 3,300 multifamily units within half a mile

## Location Map



## Demographics

	1 - Mile	3 - Miles	5 - Miles
Total Population	22,056	113,288	271,579
Daytime Population	5,338	55,469	179,912
Households	9,127	42,572	98,068
Average HH Income	\$53,704	\$55,807	\$57,581
Multi-Family Units	4,705	16,503	35,672

## Contact Us

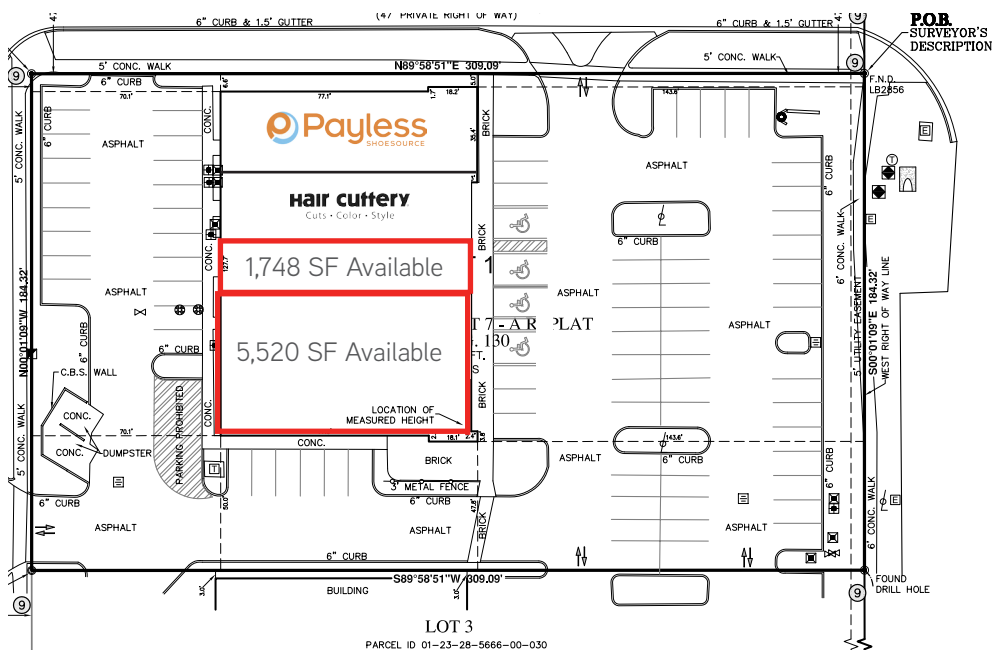
GENNY HALL  
407 362 6162  
[genny.hall@colliers.com](mailto:genny.hall@colliers.com)

CHRISTIN JONES  
407 362 6138  
[christin.jones@colliers.com](mailto:christin.jones@colliers.com)



# MARKET AERIAL & SITE PLAN

Colliers  
INTERNATIONAL



SOUTH BOUND LANES  
ASPHALT VARIES IN WIDTH

KIRKMAN ROAD  
200' PUBLIC RIGHT OF WAY

This document/email has been prepared by Colliers International for advertising and general information only. Colliers International makes no guarantees, representations or warranties of any kind, expressed or implied, regarding the information including, but not limited to, warranties of content, accuracy and reliability. Any interested party should undertake their own inquiries as to the accuracy of the information. Colliers International excludes unequivocally all inferred or implied terms, conditions and warranties arising out of this document and excludes all liability for loss and damages arising there from. This publication is the copyrighted property of Colliers International and/or its licensor(s). © 2016. All rights reserved. This communication is not intended to cause or induce breach of an existing listing agreement.



COLLIERS INTERNATIONAL  
255 S Orange Ave., Suite 1300  
Orlando, FL 32803  
407 843 1723