

247 WILSON AVENUE

BUSHWICK, BROOKLYN



RETAIL SPACE
FOR LEASE

BUSHWICK BROOKLYN

247 WILSON AVENUE

SPACE HIGHLIGHTS

LOCATION

Between Himrod St
and Harman Street

SPACE

900 SF

CEILING HEIGHT

11.25 FT

FRONTAGE

17.5 FT

DIMENSIONS

Variable

ZONING

R6

OCCUPANCY

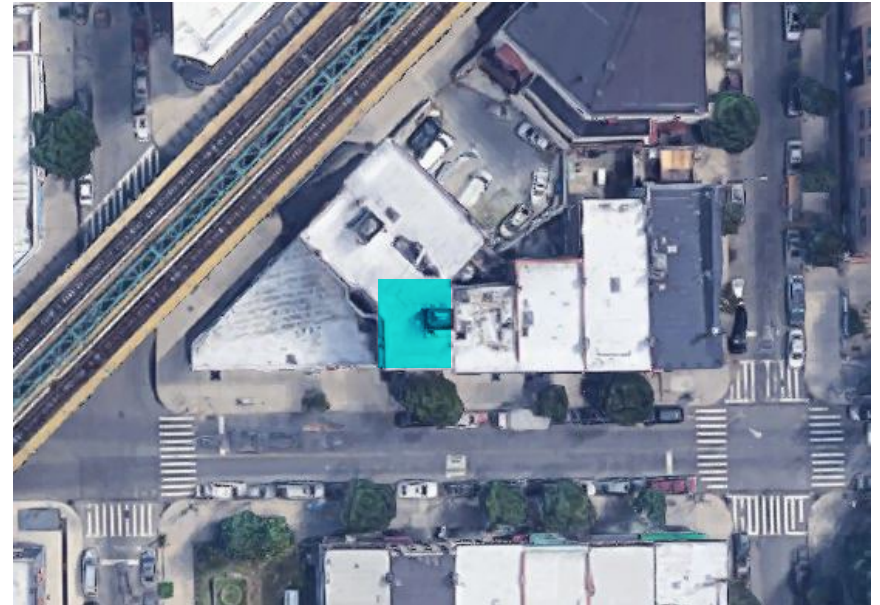
Occupied

ASKING RENT

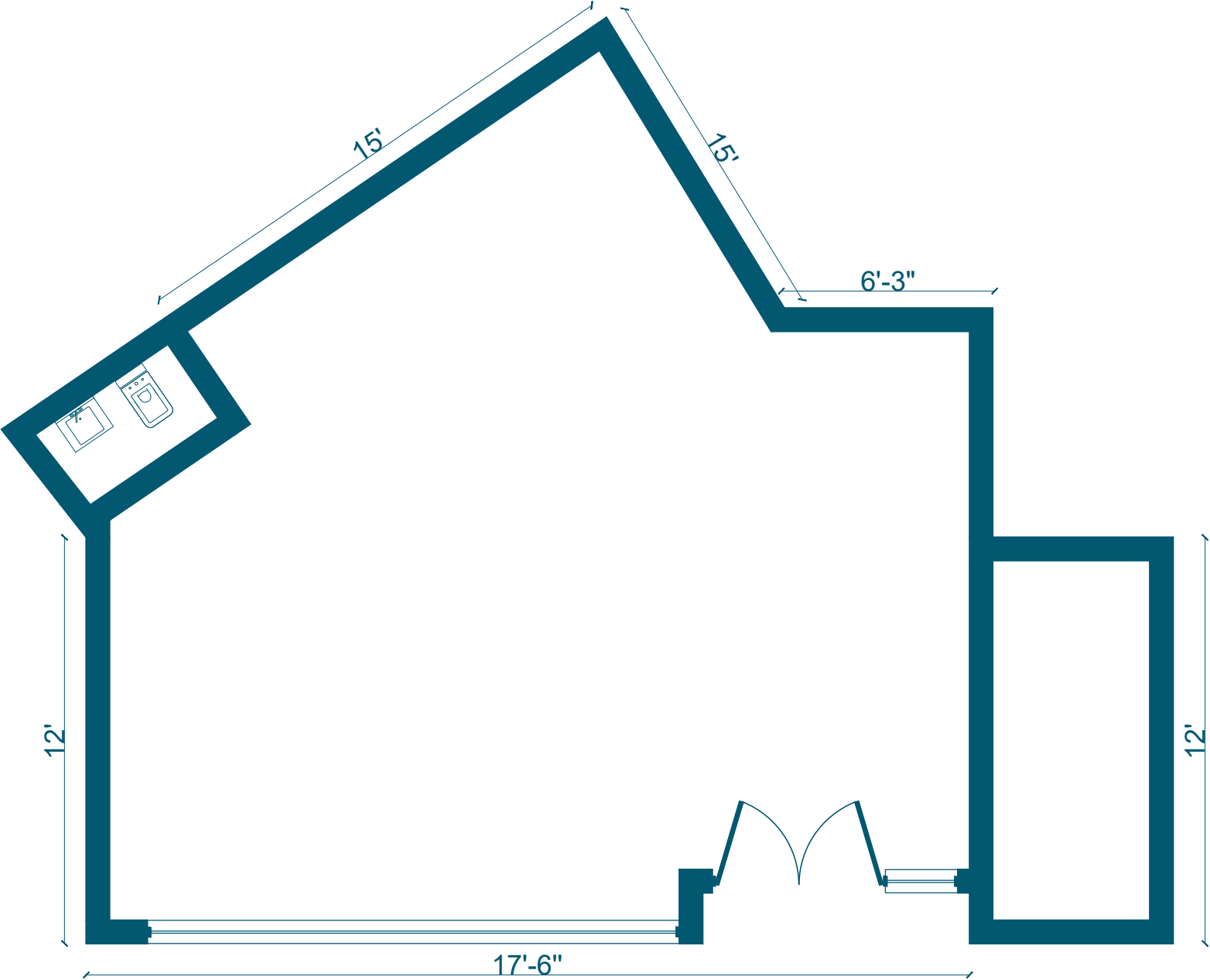
Upon Request

HIGHLIGHTS

- Recently Renovated
- 0.1 Miles from the Knickerbocker/Myrtle M Train Station
- HVAC
- High Ceilings
- Custom Marble Bar
- Humidor
- Free Pool Table!



FLOORPLANS & DETAILS



BUSHWICK BROOKLYN

247 WILSON AVENUE

EXISTING CONDITION



NEIGHBORHOOD DEMOGRAPHICS



180,448

POPULATION
WITHIN 1-MILE
RADIUS



34.5 Years

AVERAGE
POPULATION
AGE



4.26%

POPULATION
GROWTH
SINCE 2010



\$66,047

AVERAGE HHI
WITHIN 1-MILE
RADIUS



3,723

TOTAL BUSINESSES
WITHIN 1-MILE
RADIUS



\$1.2 bn

ANNUAL SPENDING
WITHIN 1-MILE
RADIUS

BUSHWICK BROOKLYN

247 WILSON AVENUE

NEIGHBORHOOD & TRANSPORTATION

NEIGHBORHOOD TENANTS

- Bootleg Bar
- Darlings
- Chimu Express
- Milk & Pull
- Akaru Sushi
- Boobie Trap
- Party On
- Blink Fitness
- Mi Bella Dama
- Dweebs
- Ops
- Alphaville
- Le Garage
- L Train Vintage
- The Wheelhouse
- The Juice Spot
- Rosario Pizza
- Bushwick Public House
- CTown Supermarkets
- FirstLive Studio
- Space 776 Gallery
- Central Wine & Liquor

TRANSPORTATION

- 2 Min Walk at Knickerbocker Avenue (0.1 mi)
- 6 Min Walk at Central Avenue (0.3 mi)
- 10 Min Walk at Myrtle-Wyckoff Avenues (0.5 mi)
- 10 Min Walk at DeKalb Avenue (0.5 mi)
- 12 Min Walk at Kosciuszko Street (0.6 mi)



BUSHWICK BROOKLYN

247 WILSON AVENUE

CONTACT



JOSEPH DIPIAZZA
917.982.6969
JDIPIAZZA@EXRNY.COM

