

# RIVER'S BEND & ROUTE 10

FOR SALE

Chester, Virginia 23836



## RETAIL & OFFICE SITES AVAILABLE ON ROUTE 10

### PROPERTY HIGHLIGHTS:

- ▶ 1.5 - 3.5 acres of retail & office sites available
- ▶ Zoned C-3 and C-5
- ▶ High traffic location along Route 10 (41,000 VPD)
- ▶ Join CVS, Sheetz, Wawa, Food Lion, Wendy's, Taco-Bell, McDonalds, Burger King and more
- ▶ Located near Amazon.com, Northrup Grumman and Capitol One facilities
- ▶ Public utilities available

Demographics	3 Mile	5 Miles	7 Miles
Population	18,625	50,730	107,792
Daytime Population	7,781	22,245	48,186
Average Household Income	\$109,381	\$88,684	\$80,791



**Nathan S. Jones, IV**  
 nathan.jones@domcommercial.com  
 Office: 855.530.2300  
 domcommercial.com

Follow us on:



# RIVER'S BEND & ROUTE 10

FOR SALE

Chester, Virginia 23836

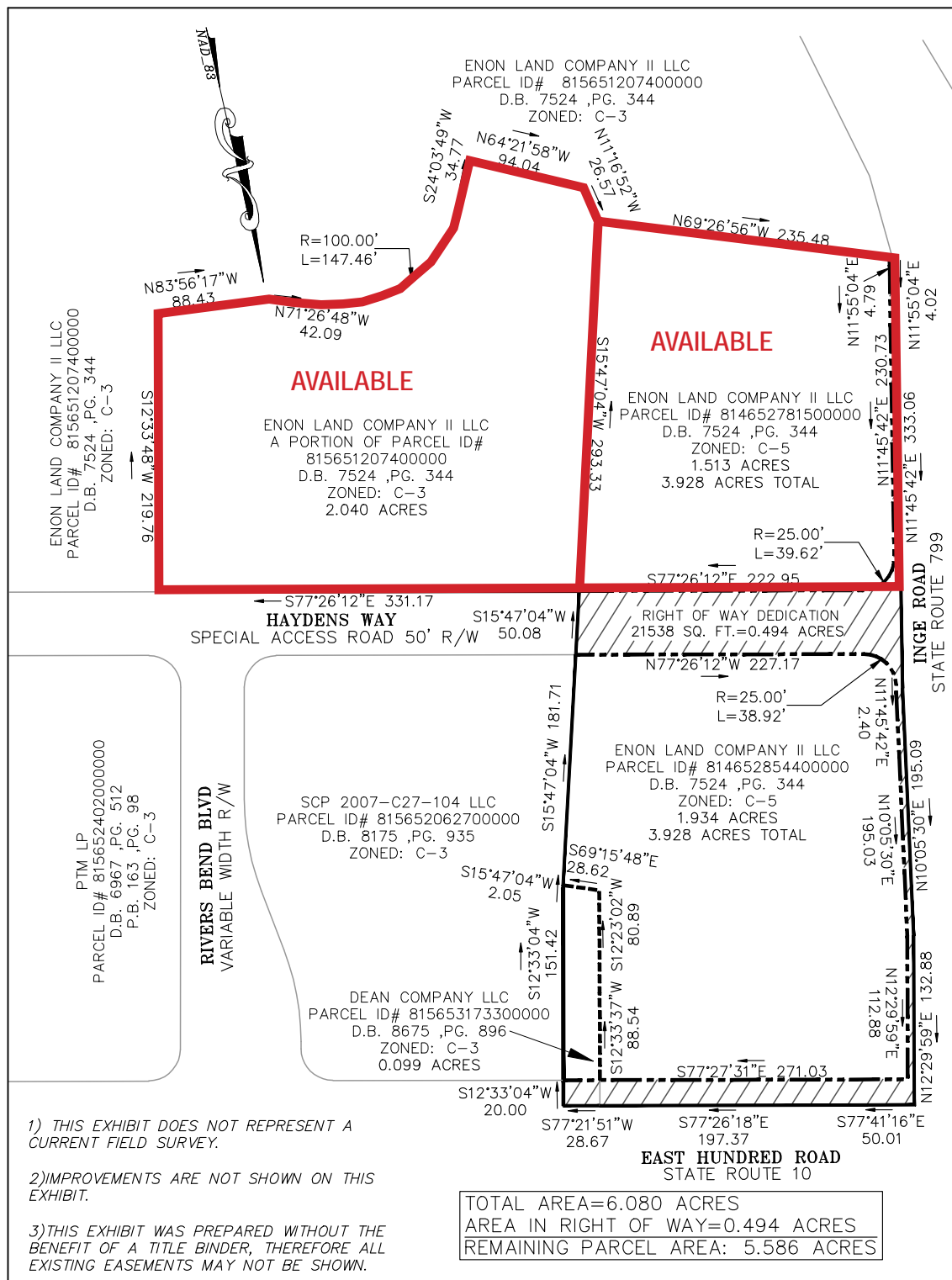


**Nathan S. Jones, IV**  
nathan.jones@domcommercial.com  
Office: 855.530.2300  
domcommercial.com

# RIVER'S BEND & ROUTE 10

FOR SALE

Chester, Virginia 23836



**Nathan S. Jones, IV**  
 nathan.jones@domcommercial.com  
 Office: 855.530.2300  
 domcommercial.com