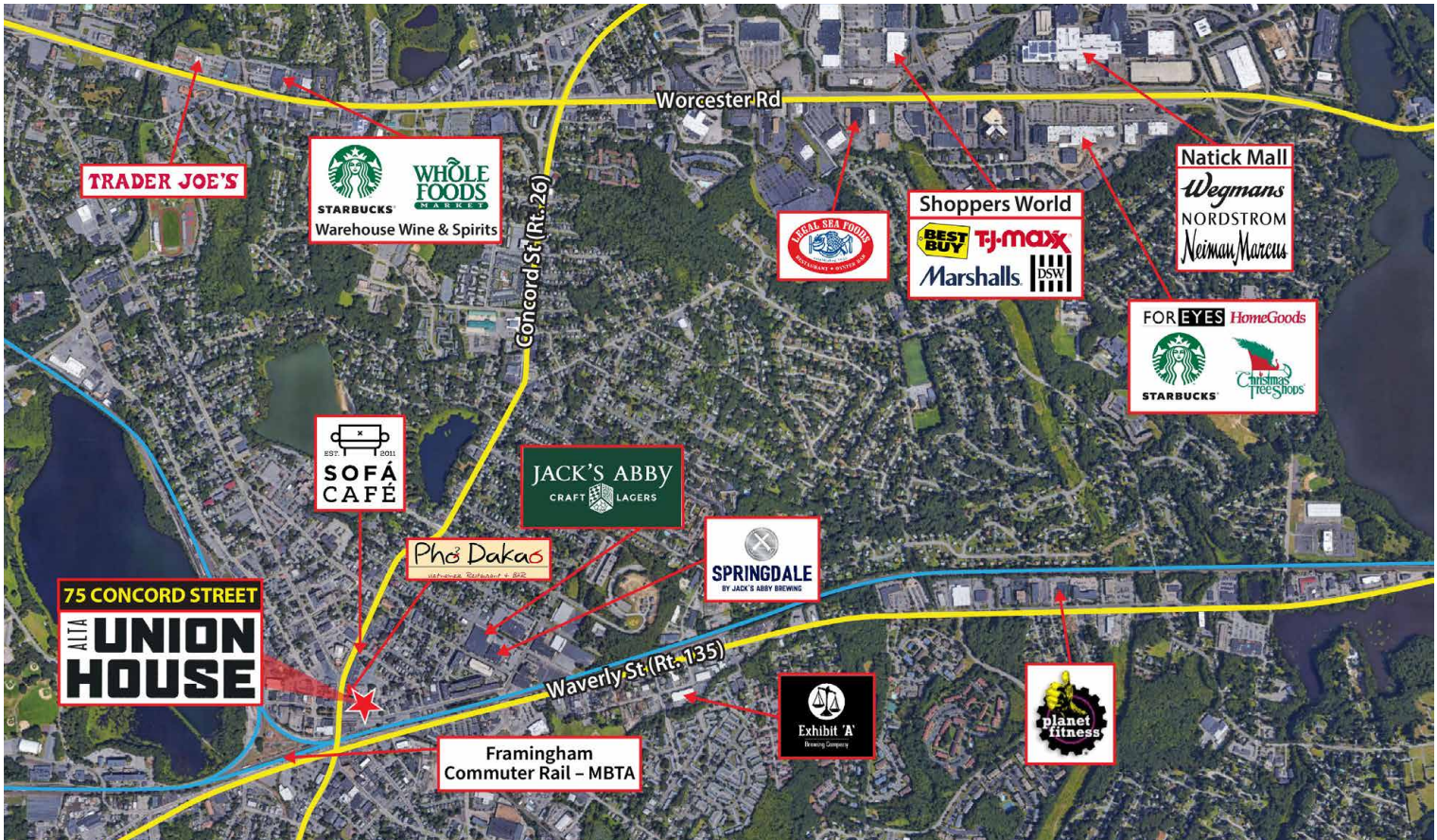


2,587 +/- SF Street Level Retail Available For Lease Alta Union House (New Construction)

75 Concord Street, Framingham, MA



Property Information

Address:	75 Concord Street Framingham, MA	Water:	Public
Available:	2,587 +/- SF	Sewer:	Public
Total SF:	2,587 +/- SF	Gas:	Natural
Parking Spaces:	Street Parking	Zoning:	CB - Central Business
Traffic Counts:	40,823 +/- VPD via Concord Street	Year Built:	Under Construction; Scheduled Opening Summer 2019

Trade Area Demographics

	3 Mile	5 Mile	10 Mile
Population:	74,362	141,113	385,942
Households:	29,135	54,926	141,828
Average HH Income:	\$104,612	\$122,351	\$144,780

Alta Union House is a new 196 unit high-end residential development located at the intersection of Concord Street and Howard Street in downtown Framingham. Alta Union House is the first major transit-orientated development located near Framingham's downtown commuter rail station. This development features one 2,587 +/- sf retail unit on the street level suitable for a variety of retail or restaurant uses. Businesses including craft breweries, restaurants, boutique retailers and live music venues are among the existing businesses in the area. This street level retail availability is an excellent opportunity for entrepreneurs looking to bring their businesses to a new development with great visibility, foot traffic and access to public transportation.

For Leasing Information:

Chris McMahon
781.862.9700 x 225
cjm@sumrp.com

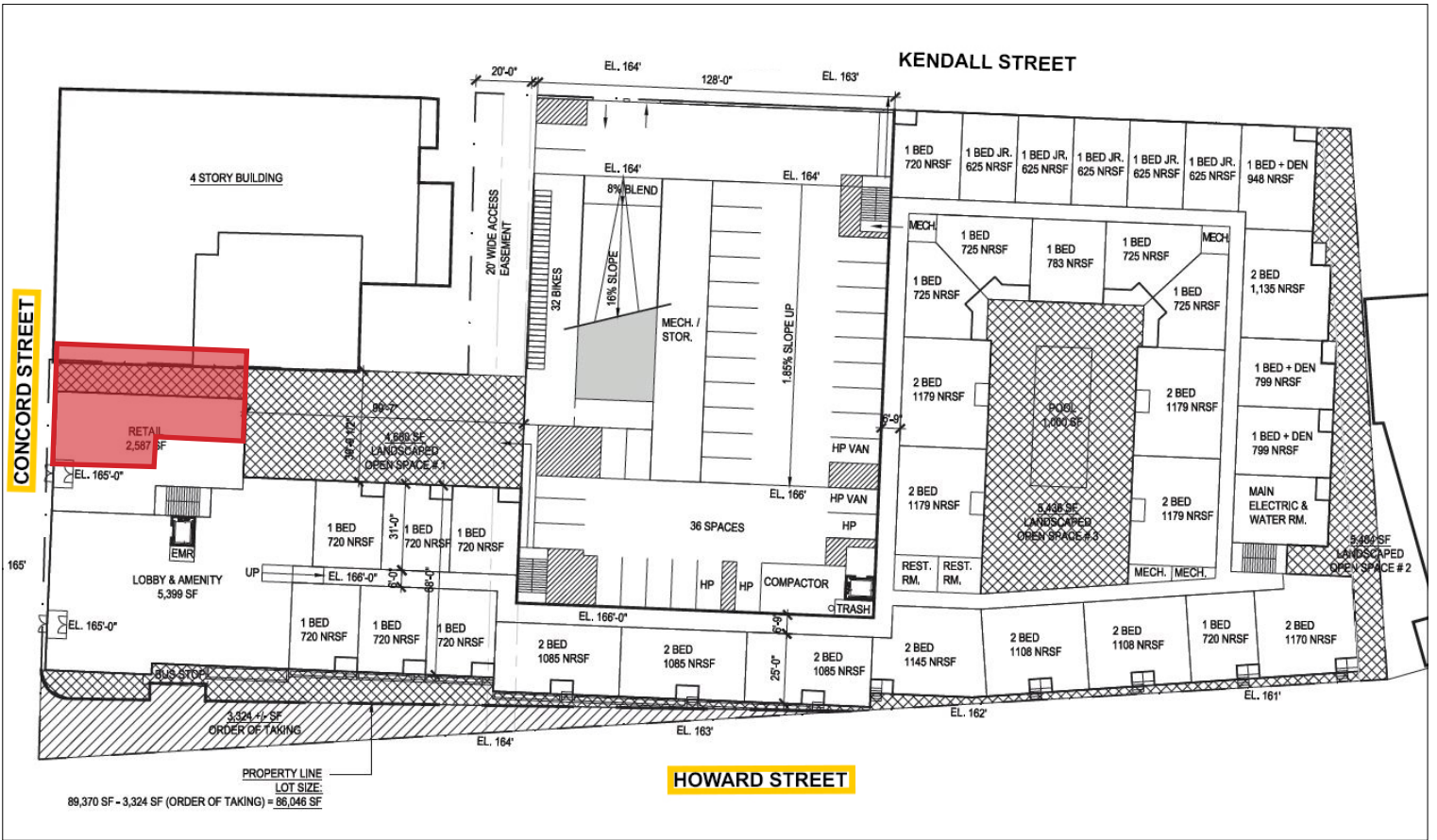
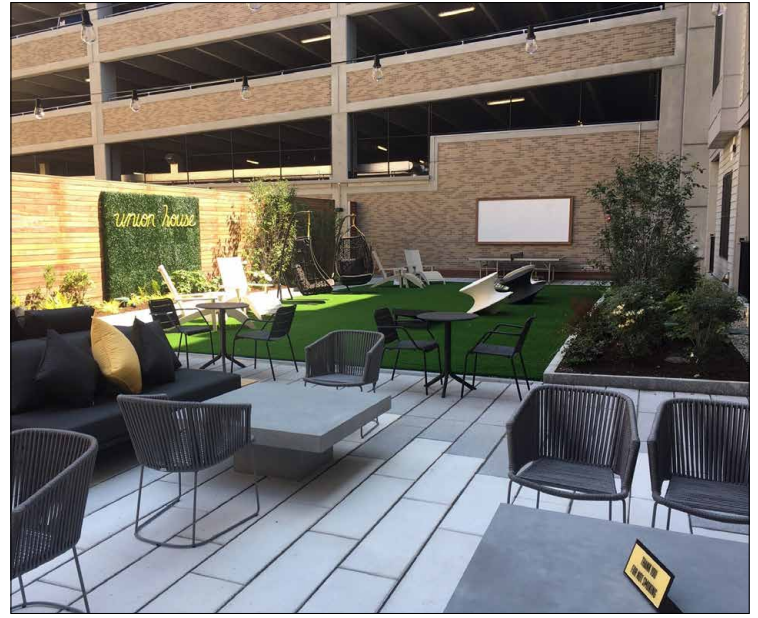
Travis Ginsberg
781-862-9700 x 226
tg@sumrp.com

Summit Realty Partners

Summit Realty Partners
80 Hayden Avenue
Lexington, MA 02421
www.summitrealtypartners.com

2,587 +/- SF Street Level Retail Available For Lease Alta Union House (New Construction)

75 Concord Street, Framingham, MA



Summit Realty Partners

Summit Realty Partners
80 Hayden Avenue
Lexington, MA 02421
www.summitrealtypartners.com