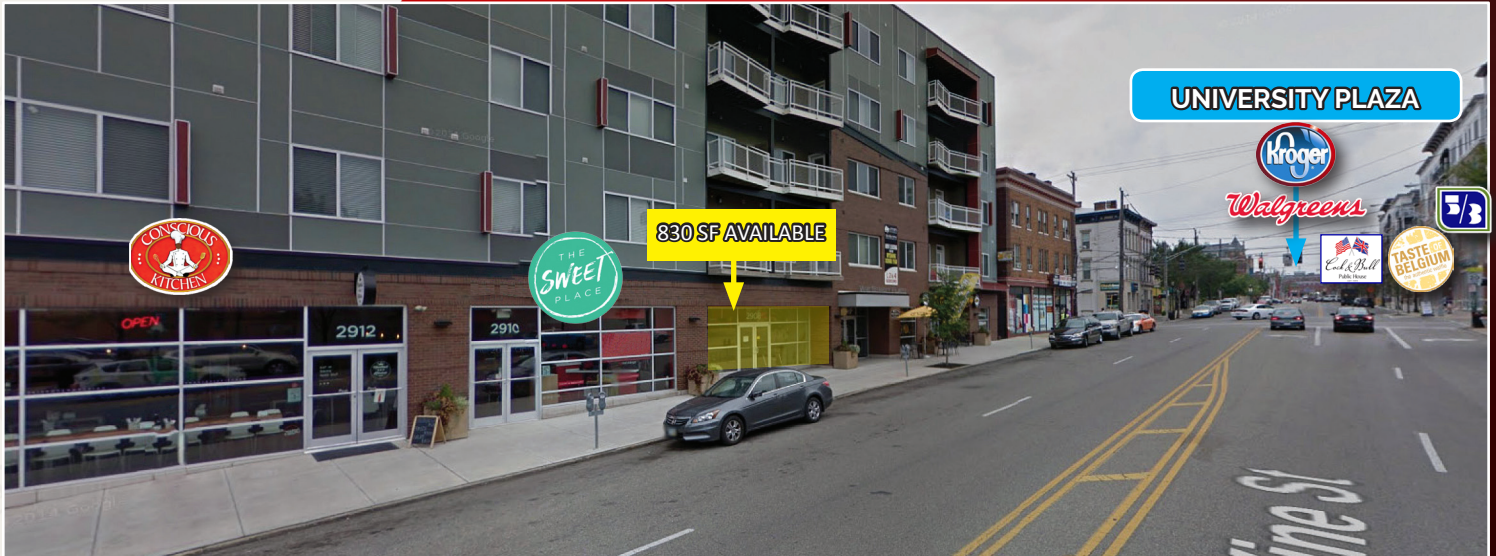


FOR LEASE

VINE STREET FLATS



2910 Vine Street, Cincinnati, Ohio 45219

PROPERTY HIGHLIGHTS

- 830 SF Available of Street Level Retail
- In the Heart of the Short Vine Entertainment District
- Only one block from both University of Cincinnati's academic and medical Campuses
- Brand NEW Kroger at University Plaza
- UC has Experienced Substantial Growth with Record Enrollment

DEMOGRAPHICS

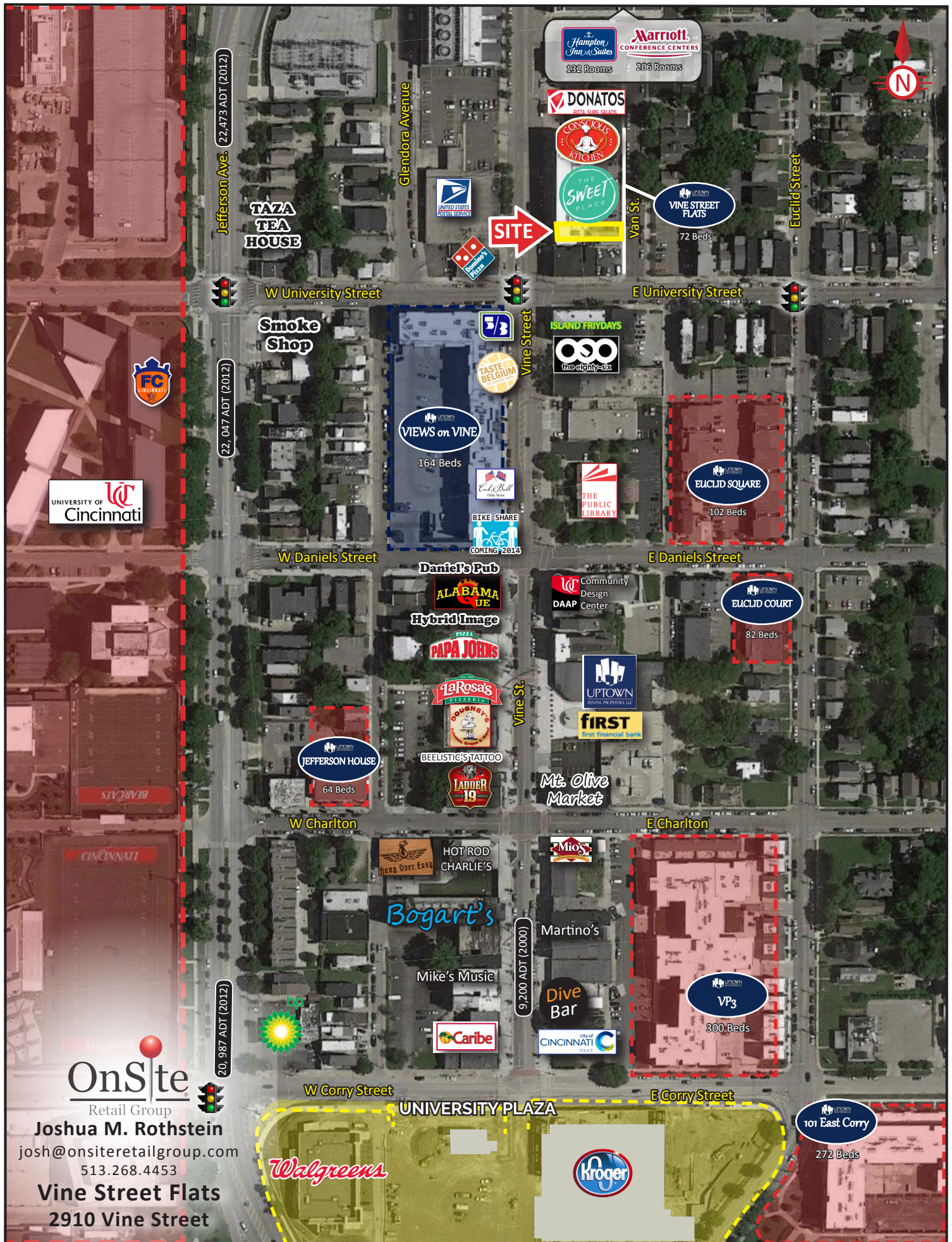
<u>Year 2017</u>	<u>One Mile</u>	<u>Three Mile</u>	<u>Five Mile</u>
Estimated Population	28,498	133,102	322,145
Daytime Population*	74,409	258,114	335,543

* Second largest employment area in the city.



Joshua M. Rothstein
513.268.4453

josh@onsiteretailgroup.com



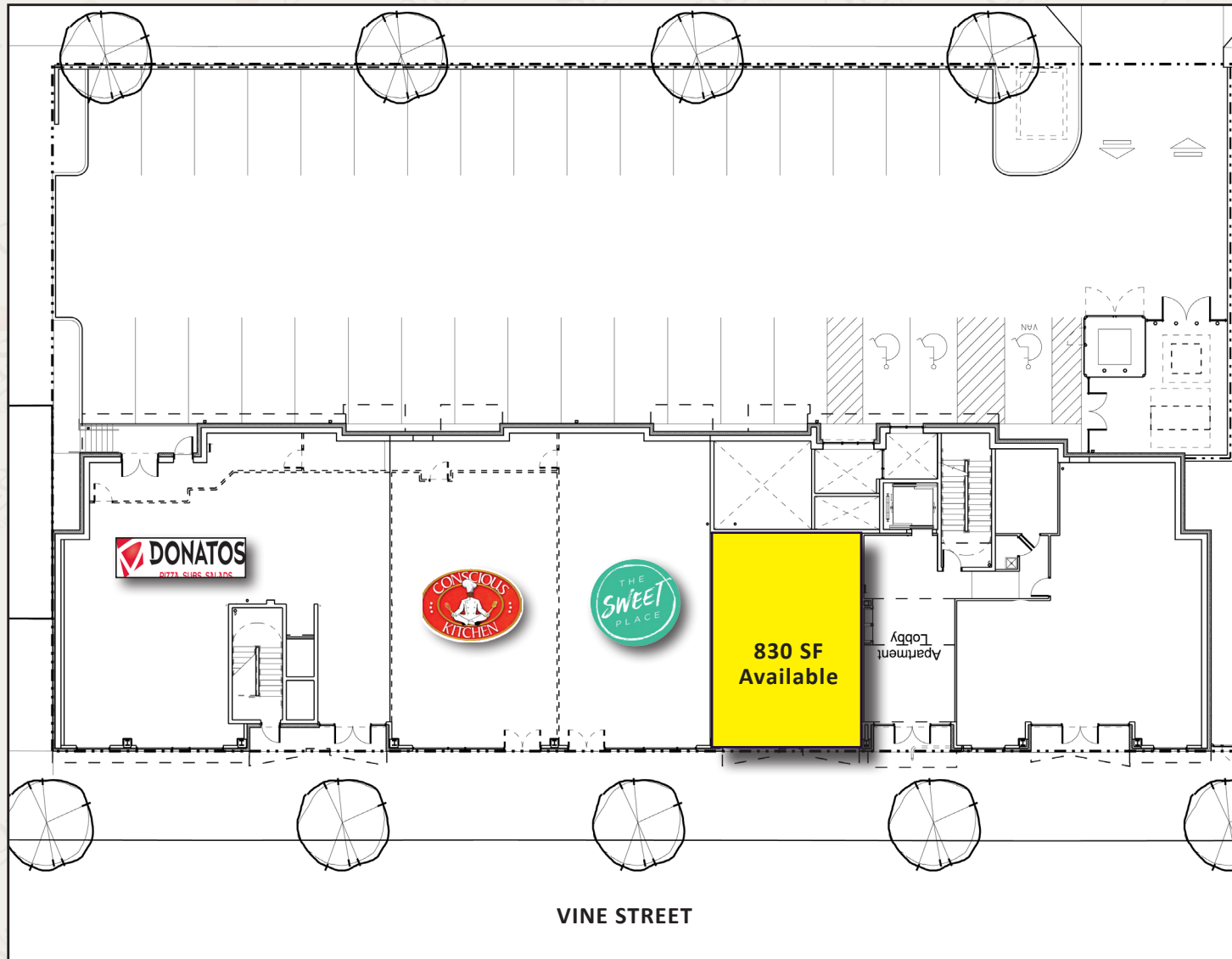
OnSite
Retail Group

Joshua M. Rothstein
josh@onsiteretailgroup.com
513.268.4453

Vine Street Flats
2910 Vine Street



FOR LEASE



VINE STREET FLATS

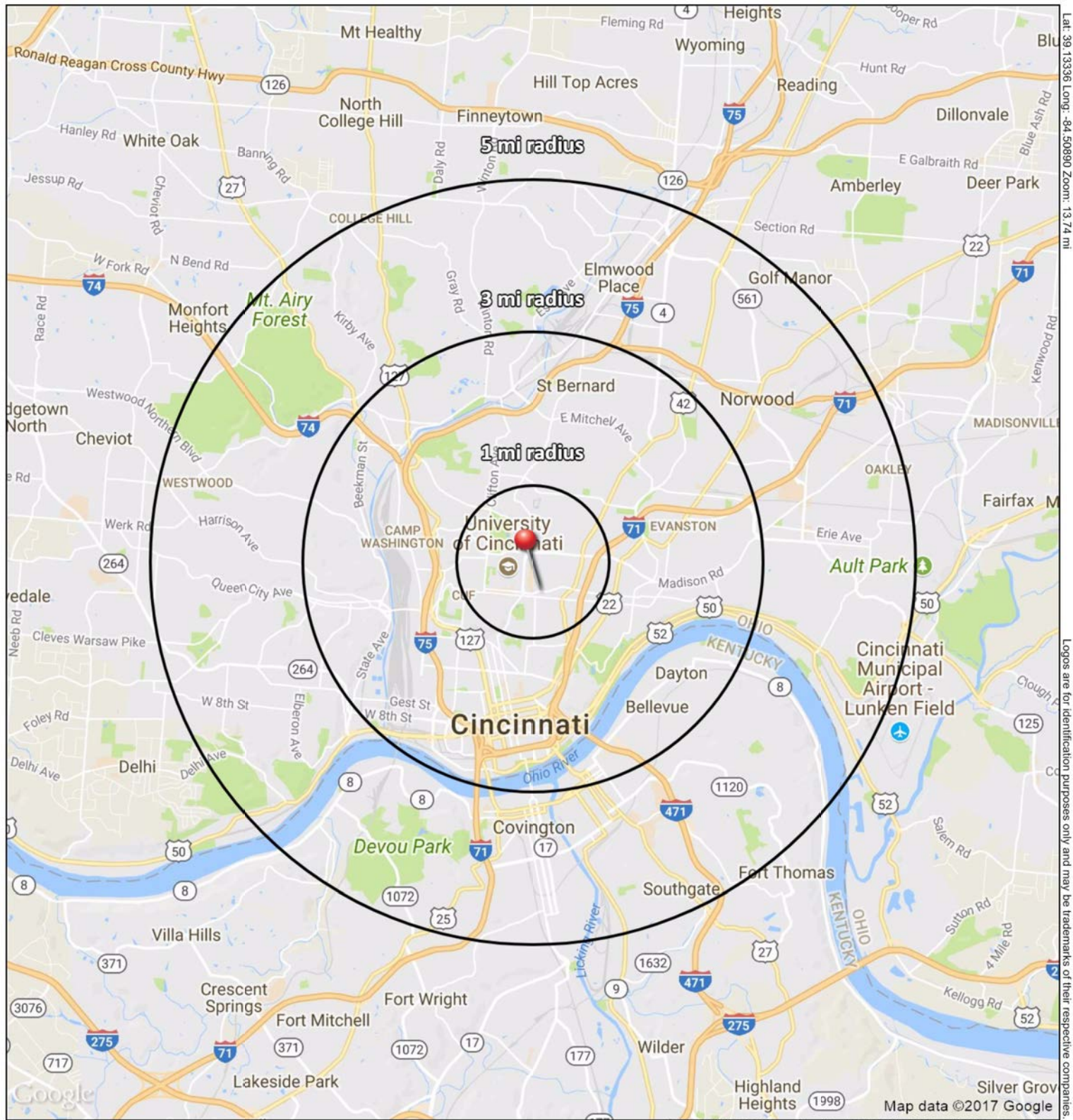
2910 Vine Street, Cincinnati, Ohio 45219

Joshua M. Rothstein

513.268.4453

josh@onsiteretailgroup.com

The information herein is produced using data from private and government sources deemed to be reliable and is provided without representation or warranty. Logos are for identification purposes only and may be trademarks of their respective companies. © 2017 OnSite Retail Group, LLC All Rights Reserved.



2910 Vine Street

Cincinnati, OH 45219

October 2017



SUMMARY PROFILE

2000-2010 Census, 2017 Estimates with 2022 Projections

Calculated using Weighted Block Centroid from Block Groups



Lat/Lon: 39.1334/-84.5089

RS1

2910 Vine Street

Cincinnati, OH 45219

1 mi radius

3 mi radius

5 mi radius

POPULATION	2017 Estimated Population	28,498	133,102	322,145
	2022 Projected Population	30,088	142,763	339,285
	2010 Census Population	25,826	127,366	315,777
	2000 Census Population	27,645	145,982	353,301
	Projected Annual Growth 2017 to 2022	1.1%	1.5%	1.1%
	Historical Annual Growth 2000 to 2017	0.2%	-0.5%	-0.5%
	2017 Median Age	25.7	32	33.3
HOUSEHOLDS	2017 Estimated Households	10,942	58,938	143,311
	2022 Projected Households	11,753	64,068	152,409
	2010 Census Households	10,124	55,854	137,901
	2000 Census Households	11,682	63,343	153,812
	Projected Annual Growth 2017 to 2022	1.5%	1.7%	1.3%
	Historical Annual Growth 2000 to 2017	-0.4%	-0.4%	-0.4%
RACE AND ETHNICITY	2017 Estimated White	48.1%	47.6%	56.1%
	2017 Estimated Black or African American	38.9%	44.9%	36.9%
	2017 Estimated Asian or Pacific Islander	9.6%	3.7%	2.4%
	2017 Estimated American Indian or Native Alaskan	0.2%	0.2%	0.3%
	2017 Estimated Other Races	3.2%	3.6%	4.3%
	2017 Estimated Hispanic	2.4%	2.9%	3.7%
INCOME	2017 Estimated Average Household Income	\$39,215	\$62,661	\$64,728
	2017 Estimated Median Household Income	\$27,636	\$40,367	\$43,871
	2017 Estimated Per Capita Income	\$16,078	\$28,576	\$29,260
EDUCATION (AGE 25+)	2017 Estimated Elementary (Grade Level 0 to 8)	3.3%	3.7%	4.2%
	2017 Estimated Some High School (Grade Level 9 to 11)	9.6%	10.2%	10.2%
	2017 Estimated High School Graduate	18.5%	24.8%	26.5%
	2017 Estimated Some College	19.1%	19.5%	20.0%
	2017 Estimated Associates Degree Only	5.8%	6.3%	6.7%
	2017 Estimated Bachelors Degree Only	22.8%	19.1%	19.2%
	2017 Estimated Graduate Degree	20.8%	16.4%	13.2%
BUSINESS	2017 Estimated Total Businesses	3,354	11,346	17,792
	2017 Estimated Total Employees	74,409	258,114	335,543
	2017 Estimated Employee Population per Business	22.2	22.7	18.9
	2017 Estimated Residential Population per Business	8.5	11.7	18.1

This report was produced using data from private and government sources deemed to be reliable. The information herein is provided without representation or warranty.