

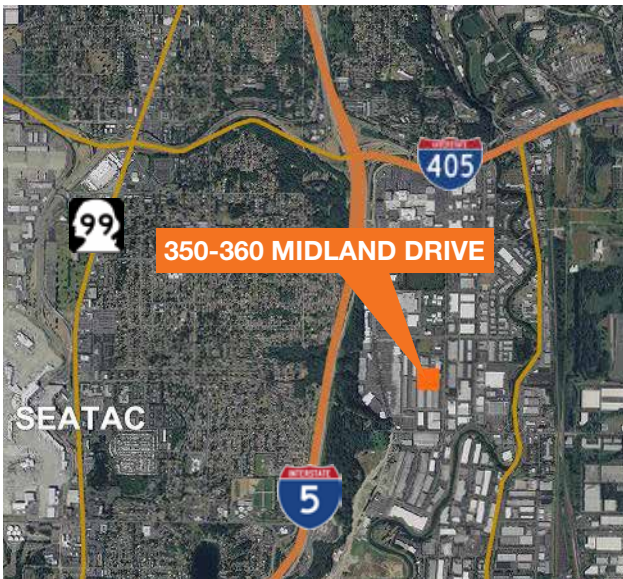
Prologis Park Tukwila

73,086 Square Feet Industrial Space For Lease

350-360 Midland Drive, Tukwila, WA



PROLOGIS



location

- Southcenter location in Tukwila
- Excellent access to I-5 and Valley Freeway and shopping and multiple restaurant amenities
- 5 minutes to SeaTac International Airport

facility

- Stand alone facility
- 77,897 SF total RSF; 73,086 SF footprint
- 5,256 SF 1st floor office, 4,811 SF mezzanine office (in 2 nodes)
- Divisible to:
 - Suite 350 - ±36,879 SF / 3,953 SF office
 - Suite 360 - ±36,207 SF / 6,114 SF office
- 16 dock-high doors / 1 grade-level door; 24' ceiling height
- Sensored energy efficient fluorescent warehouse lights
- Lease rate:
 - \$0.40 PSF shell, NNN
 - \$0.75 PSF office, NNN
 - \$0.145 NNN expenses



12886 Interurban Ave S
Tukwila, WA 98168
ph 206-248-7300
fax 206-248-7342
www.kiddermathews.com

Kidder Mathews
Mike Newton
ph 206-248-7311
mnewton@kiddermathews.

Kidder Mathews
Dan Mathews
ph 206-248-7308
dmathews@kiddermathews

Prologis
12720 Gateway Dr, Ste 110
Tukwila, WA 98168
ph 206-414-7600
fax 206-414-7601
www.prologis.com

Prologis Park Tukwila

73,086 Square Feet Industrial Space For Lease

350-360 Midland Drive, Tukwila, WA



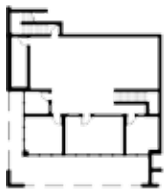
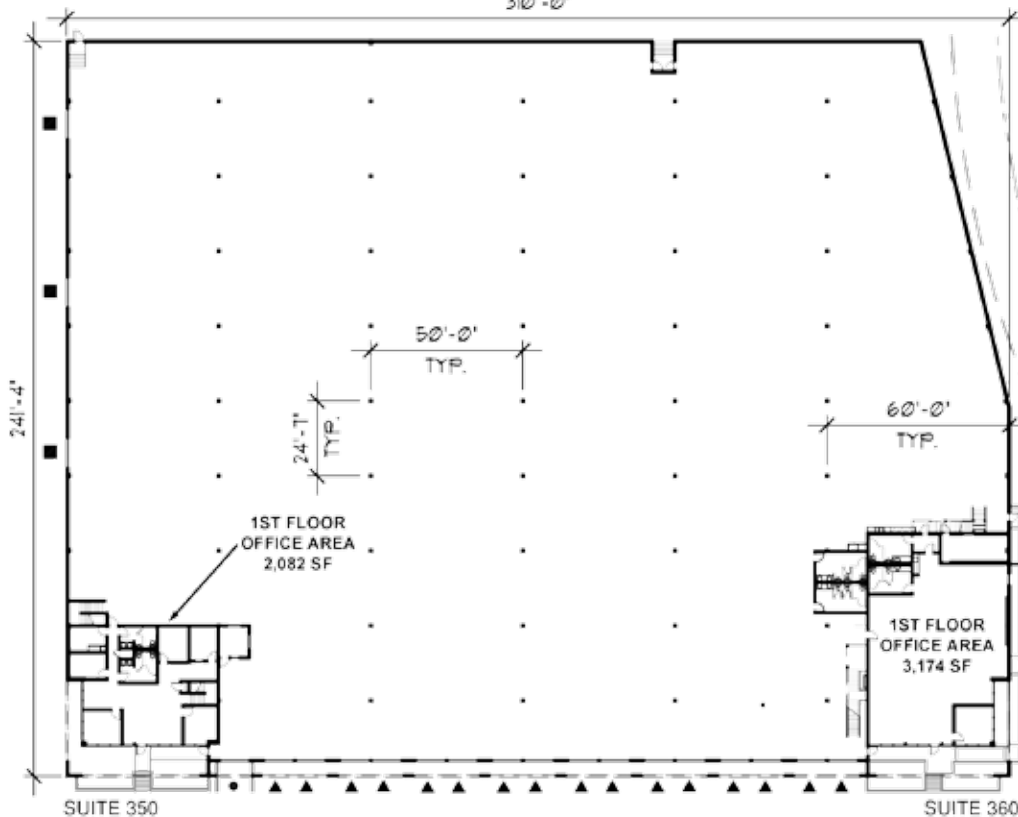
PROLOGIS

PROLOGIS TUKWILA PARK

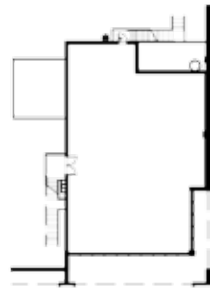
350-360 MIDLAND DRIVE | TUKWILA, WASHINGTON



310'-0"



SUITE 350
MEZZANINE
AREA = 1,871 SF



SUITE 360
MEZZANINE
AREA = 2,940 SF



BUILDING PLAN

3' 12" 30'
0.6" 18'

SUITE 350 FIRST FLOOR OFFICE : 2,082 SF

SUITE 360 FIRST FLOOR OFFICE : 3,174 SF

WAREHOUSE AREA : 67,830 SF

TOTAL FIRST FLOOR AREA : 73,086 SF

LEGEND

- ON GRADE DOOR
- ▲ DOCK LEVEL DOOR
- RAIL DOOR



12886 Interurban Ave S
Tukwila, WA 98168
ph 206-248-7300
fax 206-248-7342
www.kiddermathews.com

Kidder Mathews
Mike Newton
ph 206-248-7311
mnewton@kiddermathews.com

Kidder Mathews
Dan Mathews
ph 206-248-7308
dmathews@kiddermathews.com

Prologis
12720 Gateway Dr, Ste 110
Tukwila, WA 98168
ph 206-414-7600
fax 206-414-7601
www.prologis.com