

Commercial Leasing Office
5836 Fayetteville Rd, Suite 201
Durham, NC 27713
Ph: 919-484-1053
Fax: 919-484-1996
www.ticonproperties.com
brent@ticonproperties.com

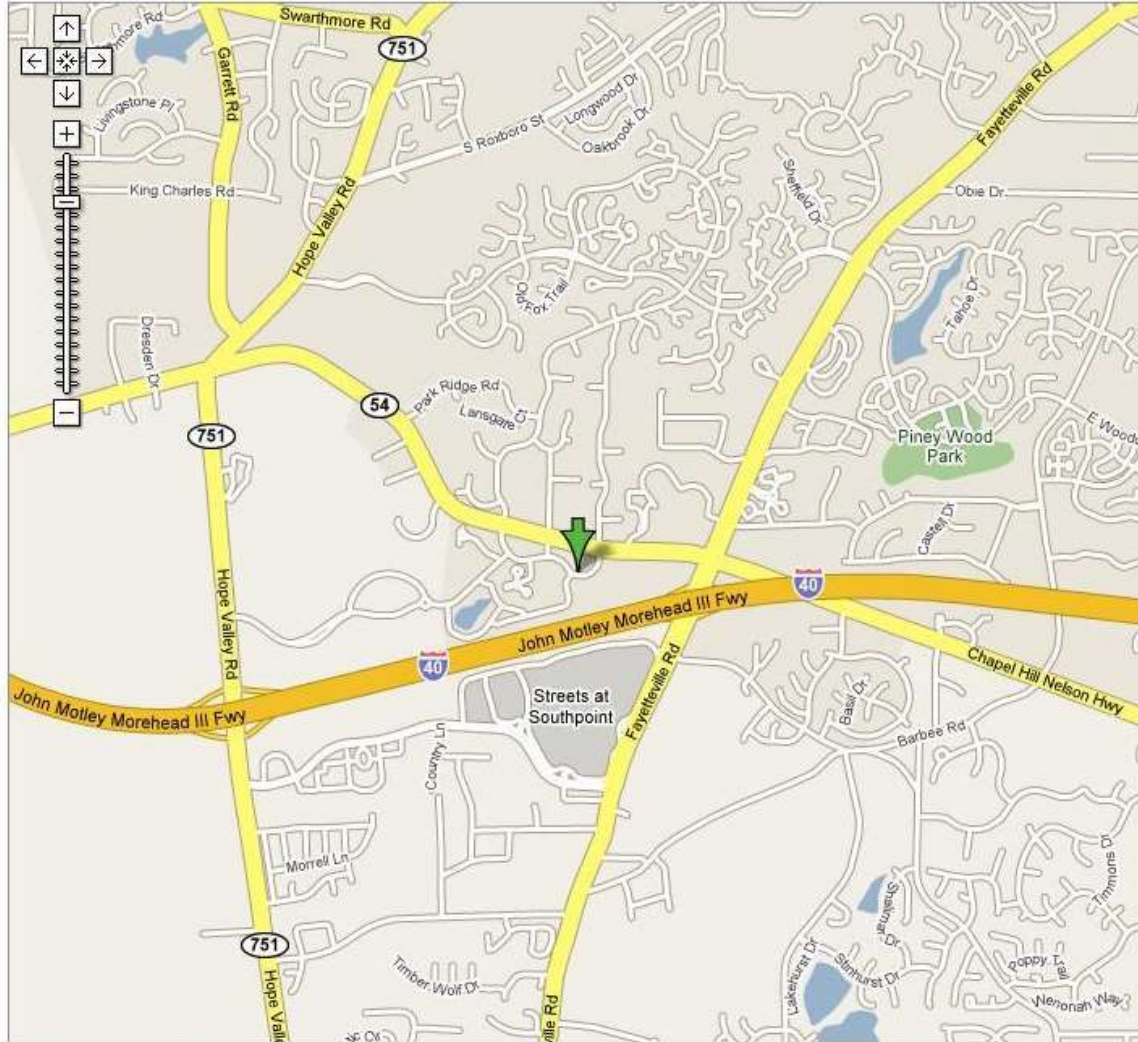


Highgate Centre Office Space available for Lease

- **First and Second Floor Office Space**
- **\$13.50 - \$16.50 PSF**
- **3 to 5 year lease term**
- **Tenant responsible for electricity, janitorial, phone/internet**
- **TICAM, Water/Sewer, Trash service is included**
- **3% annual rent escalations**

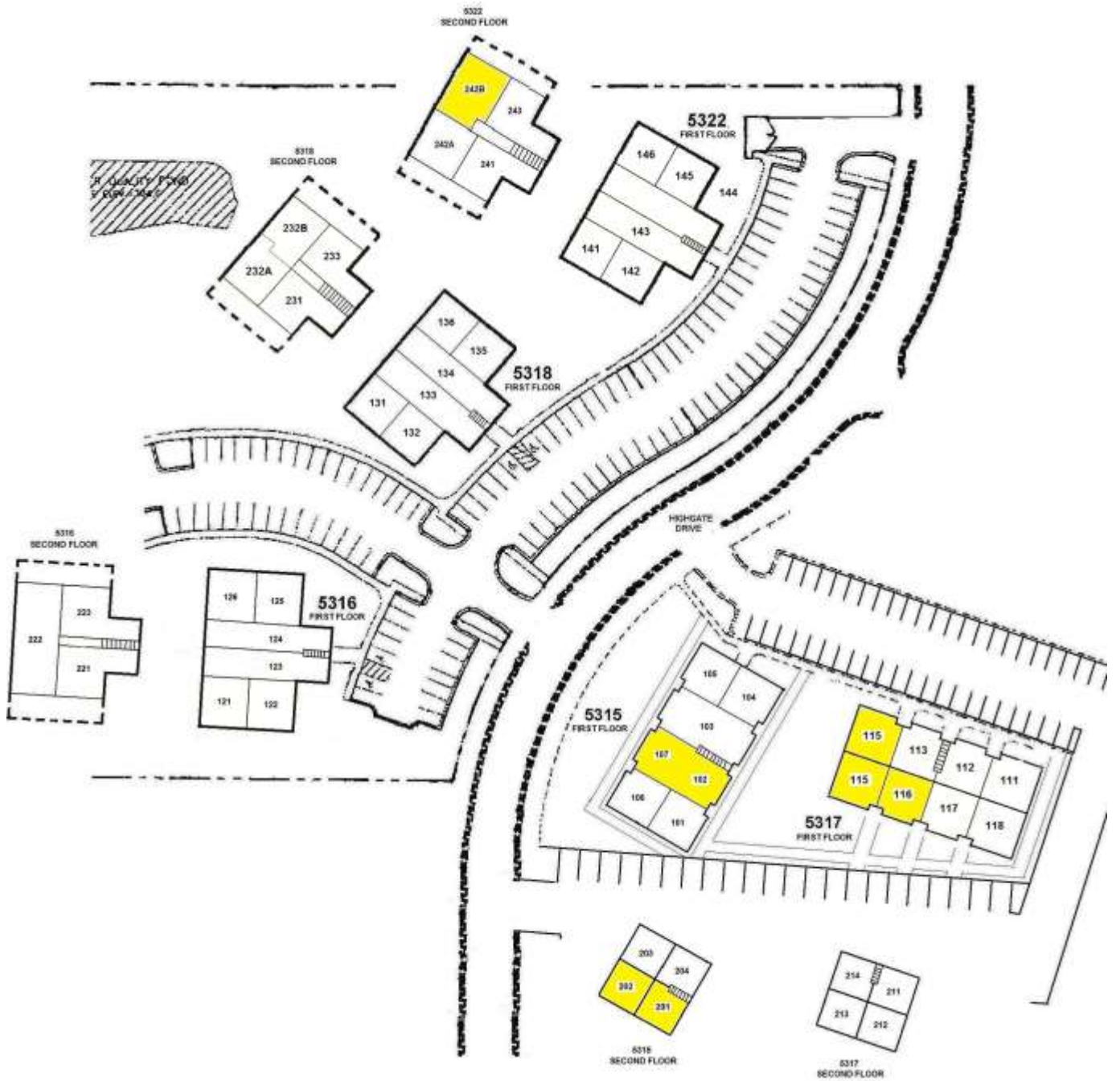
INFORMATION HEREIN IS SUBJECT TO VERIFICATION BY ALL PARTIES AND MAY CHANGE WITHOUT NOTICE. PLANS NOT TO SCALE; FOR GENERAL APPROXIMATION ONLY; SUBJECT TO CHANGE, REVISION, OMISSION AT ANY TIME.

**Location:
5315, 5316, 5317, 5318 & 5322 High Gate Dr
Durham, NC 27713**



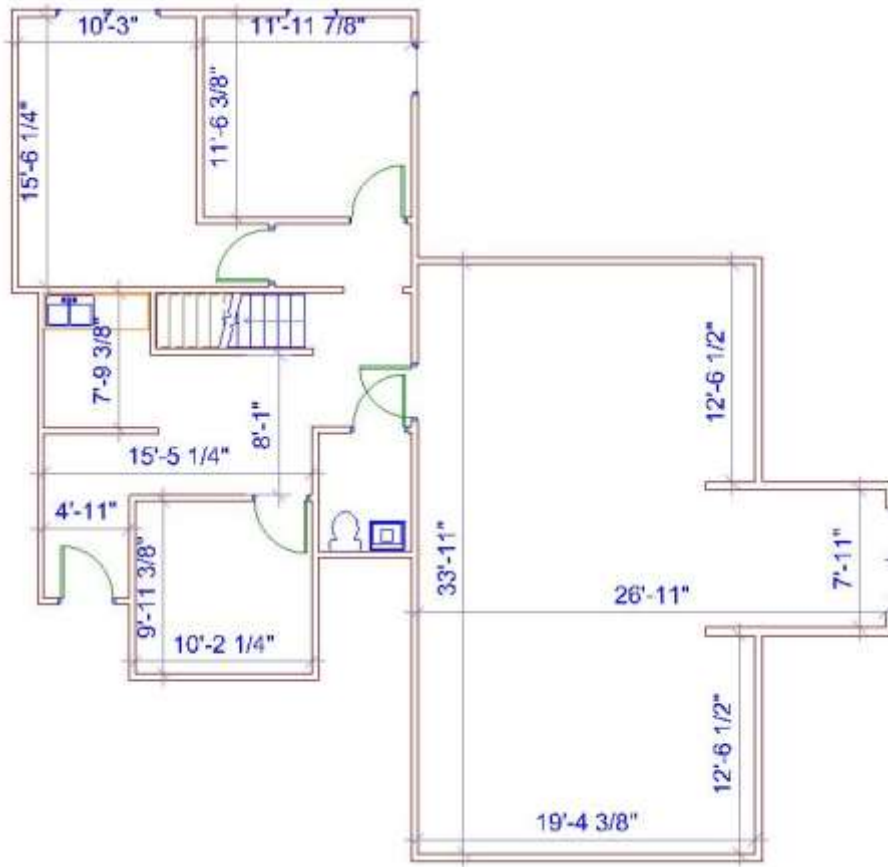
INFORMATION HEREIN IS SUBJECT TO VERIFICATION BY ALL PARTIES AND MAY CHANGE WITHOUT NOTICE. PLANS NOT TO SCALE; FOR GENERAL APPROXIMATION ONLY; SUBJECT TO CHANGE, REVISION, OMISSION AT ANY TIME.

Available space is highlighted



INFORMATION HEREIN IS SUBJECT TO VERIFICATION BY ALL PARTIES AND MAY CHANGE WITHOUT NOTICE. PLANS NOT TO SCALE; FOR GENERAL APPROXIMATION ONLY; SUBJECT TO CHANGE, REVISION, OMISSION AT ANY TIME.

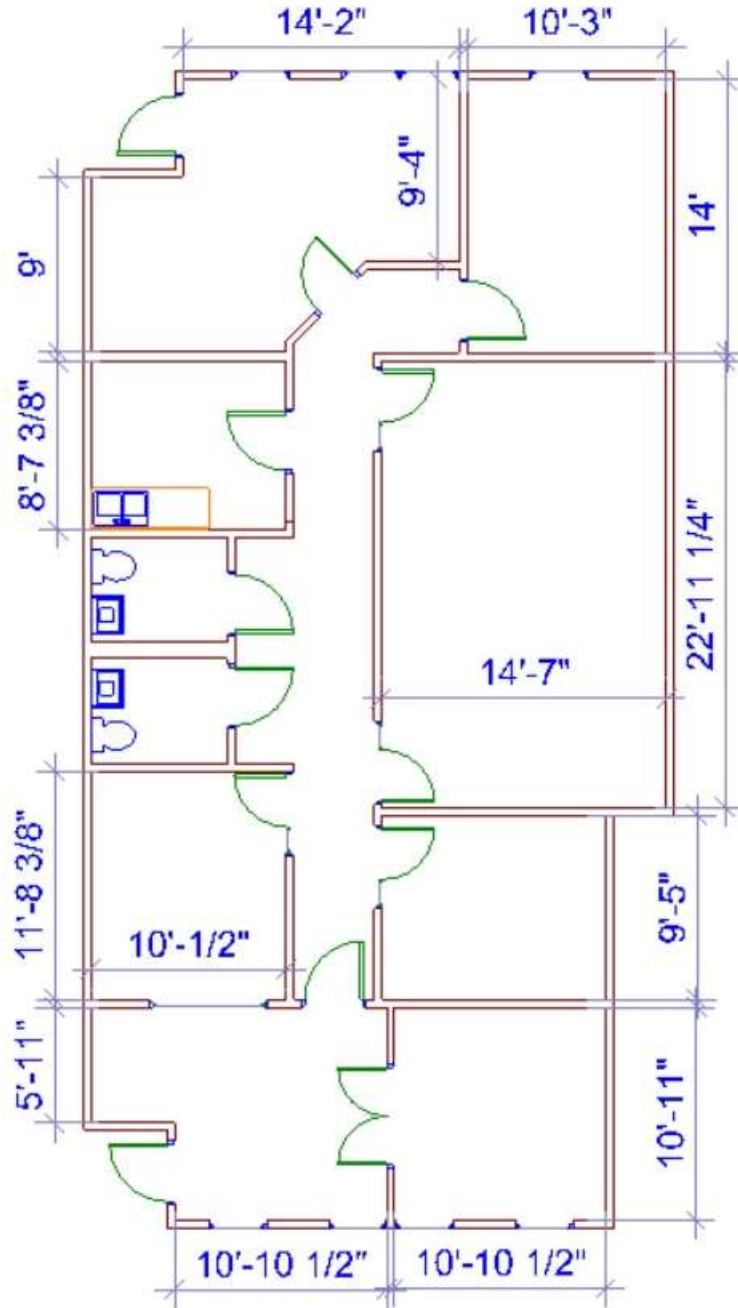
Building 5322 Suite 242-B
Approximately 1,462 SF
\$13.50 PSF or \$1,644.75 / month
Second Floor Walk Up



INFORMATION HEREIN IS SUBJECT TO VERIFICATION BY ALL PARTIES AND MAY CHANGE WITHOUT NOTICE. PLANS NOT TO SCALE; FOR GENERAL APPROXIMATION ONLY; SUBJECT TO CHANGE, REVISION, OMISSION AT ANY TIME.

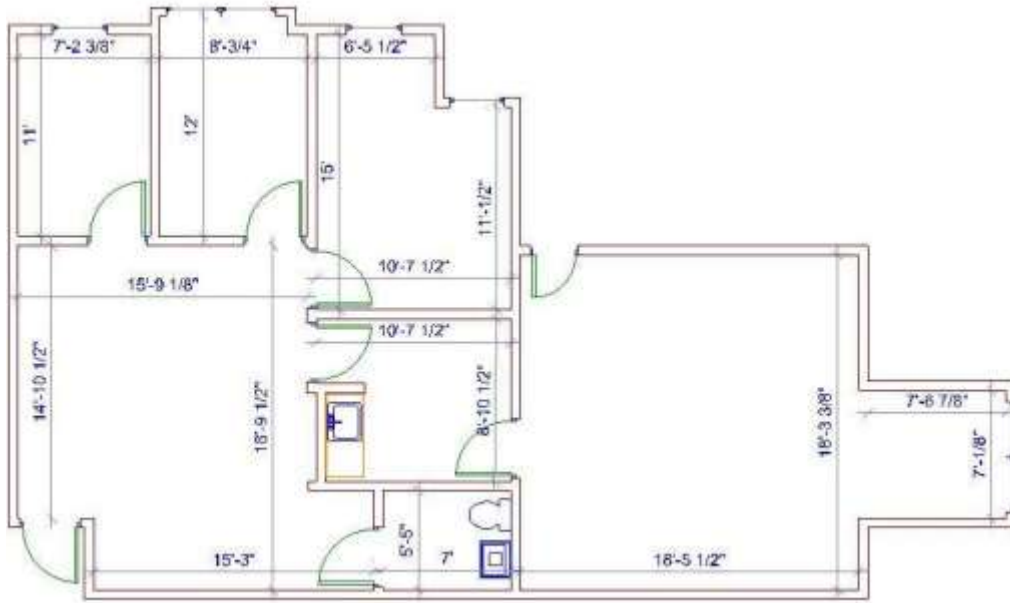
Building 5315 Suite 102/107
Approximately 1,693 SF
\$16.50 PSF or \$2,327.88 / month
First Floor Interior Office

LEASE PENDING

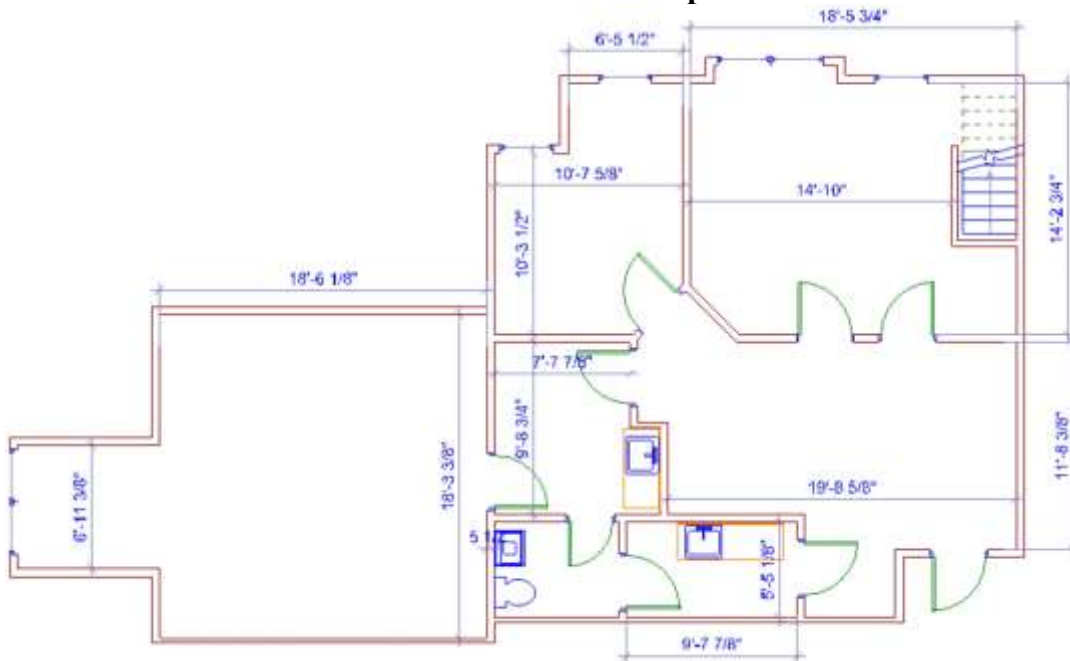


INFORMATION HEREIN IS SUBJECT TO VERIFICATION BY ALL PARTIES AND MAY CHANGE WITHOUT NOTICE. PLANS NOT TO SCALE; FOR GENERAL APPROXIMATION ONLY; SUBJECT TO CHANGE, REVISION, OMISSION AT ANY TIME.

Building 5315 Suite 201
Approx 1288 SF
\$13.50 PSF or \$1,449.00 / month
Second Floor Walk Up



Building 5315 Suite 202
Approx 1266 SF
\$13.50 PSF or \$1,424.25 / month
Second Floor Walk Up



INFORMATION HEREIN IS SUBJECT TO VERIFICATION BY ALL PARTIES AND MAY CHANGE WITHOUT NOTICE. PLANS NOT TO SCALE; FOR GENERAL APPROXIMATION ONLY; SUBJECT TO CHANGE, REVISION, OMISSION AT ANY TIME.

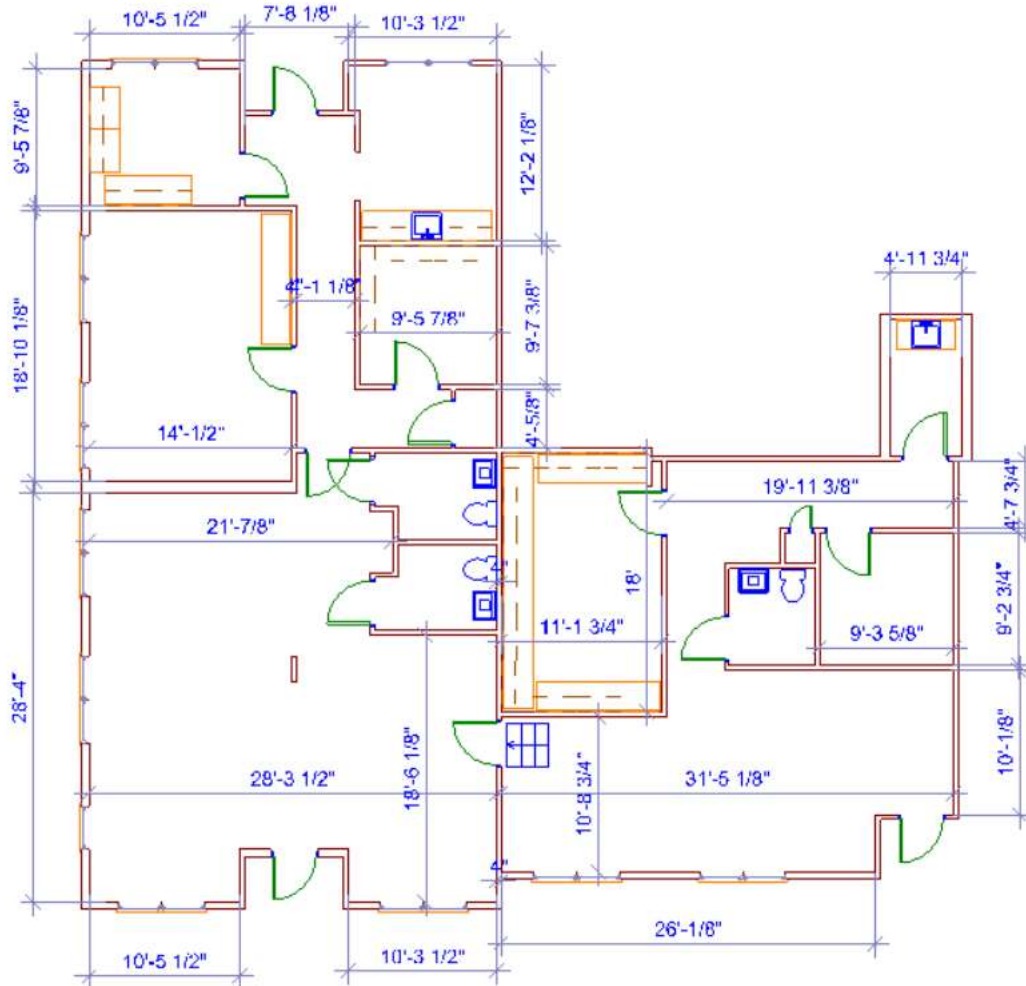
Building 5317 Suite 115/116
Approximately 2,758 SF Total
\$16.50 PSF or \$3,792.25 / month

First Floor Corner Office

Sublease through 12/31/22

Suite 115
Approx 1,752 SF
\$2,409.00 / month

Suite 116
Approx 1,006 SF
\$1,383.25 / month



INFORMATION HEREIN IS SUBJECT TO VERIFICATION BY ALL PARTIES AND MAY CHANGE WITHOUT NOTICE. PLANS NOT TO SCALE; FOR GENERAL APPROXIMATION ONLY; SUBJECT TO CHANGE, REVISION, OMISSION AT ANY TIME.