



1645 GREENLEAF AVENUE, ELK GROVE VILLAGE

PRICE
REDUCTION

24,000 SF OF INDUSTRIAL WAREHOUSE SPACE AVAILABLE FOR LEASE



AVAILABLE

UNIT 1645

- TOTAL SF: 24,000 SF
- OFFICE: 1,855 SF
- LOADING: 2 interior docks
1 DID
- RAIL: 1 rail door
- AVAILABLE: Immediately
- POWER: 800 amp 3 phase
120/240 volt

DETAILS

- PRICING: \$8.50 PSF Gross
- BUILDING SIZE: 143,942 SF
- CEILING HEIGHT: 17' clear
- CAR PARKING: 1 per 1,000
- ZONING: I-2
- SPRINKLERED: Wet

HIGHLIGHTS

- Excellent O'Hare location
- Institutional ownership
- Rail served



P PLYMOUTH REIT



ANDREW MALETICH
Principal
630.729.7942
amaletich@cawleychicago.com

DAVID CONROY
Principal
630.729.7943
dconroy@cawleychicago.com

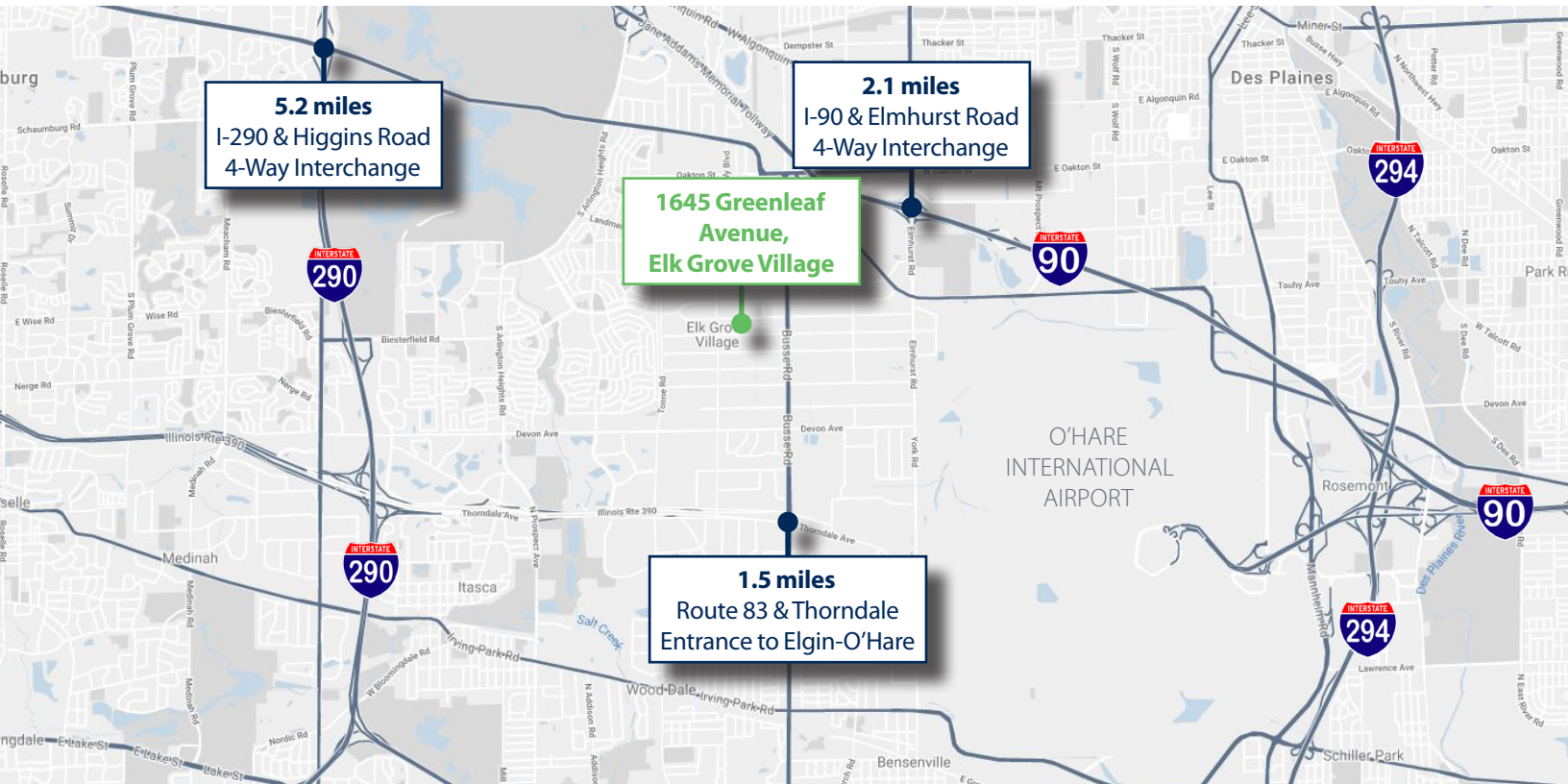
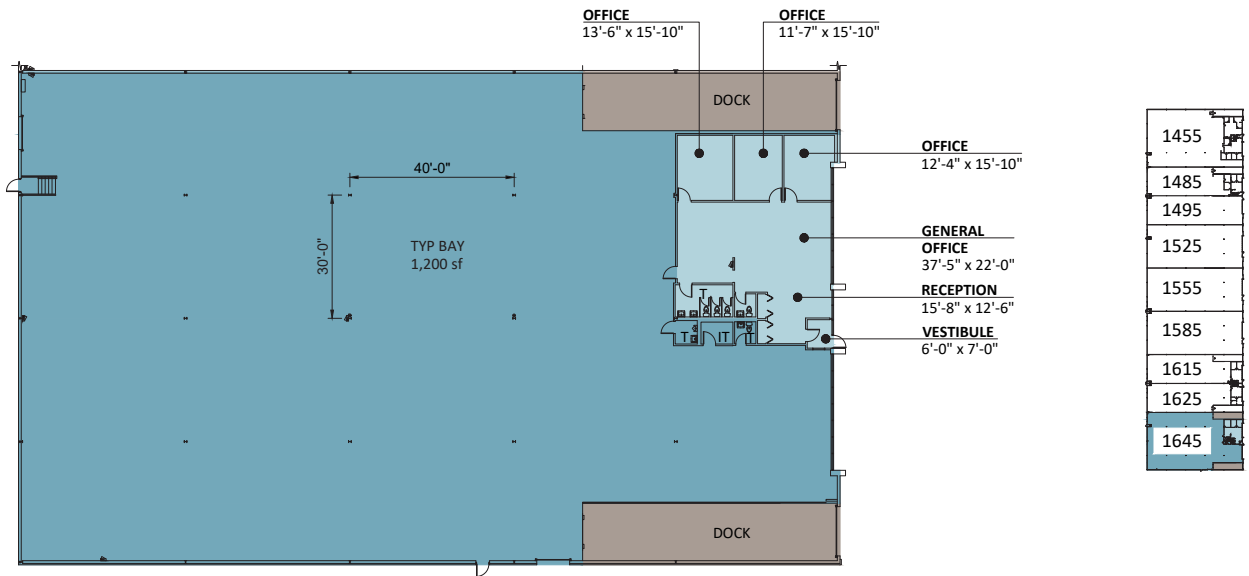
MATT GARLAND
Vice President
630.729.7945
mgarland@cawleychicago.com

DUSTIN ALBERS
Associate
630.735.8747
dalbers@cawleychicago.com





1645 GREENLEAF AVENUE, ELK GROVE VILLAGE



PLYMOUTH REIT



ANDREW MALETICH
Principal
630.729.7942
amaletich@cawleychicago.com

DAVID CONROY
Principal
630.729.7943
dconroy@cawleychicago.com

MATT GARLAND
Vice President
630.729.7945
mgarland@cawleychicago.com

DUSTIN ALBERS
Associate
630.735.8747
dalbers@cawleychicago.com

