

203 W Pioneer Avenue

Puyallup, WA 98371

Prime Downtown Puyallup location

992 SF building on .17 acres (7,250 SF)

Great owner/user opportunity

Located at the corner of 2nd & W Pioneer bus route

Next to Downtown Puyallup Post Office and across from Pioneer Park

Pioneer Avenue frontage

On site parking

Neighborhood foot traffic

10,426 CPD at W Pioneer Avenue & S Meridian Avenue

Building for Sale at \$339,000.00



DEMOGRAPHICS

	1 mile	3 miles	5 miles
Population	10,580	60,362	141,508
Average Household Income	\$67,090	\$74,614	\$75,088

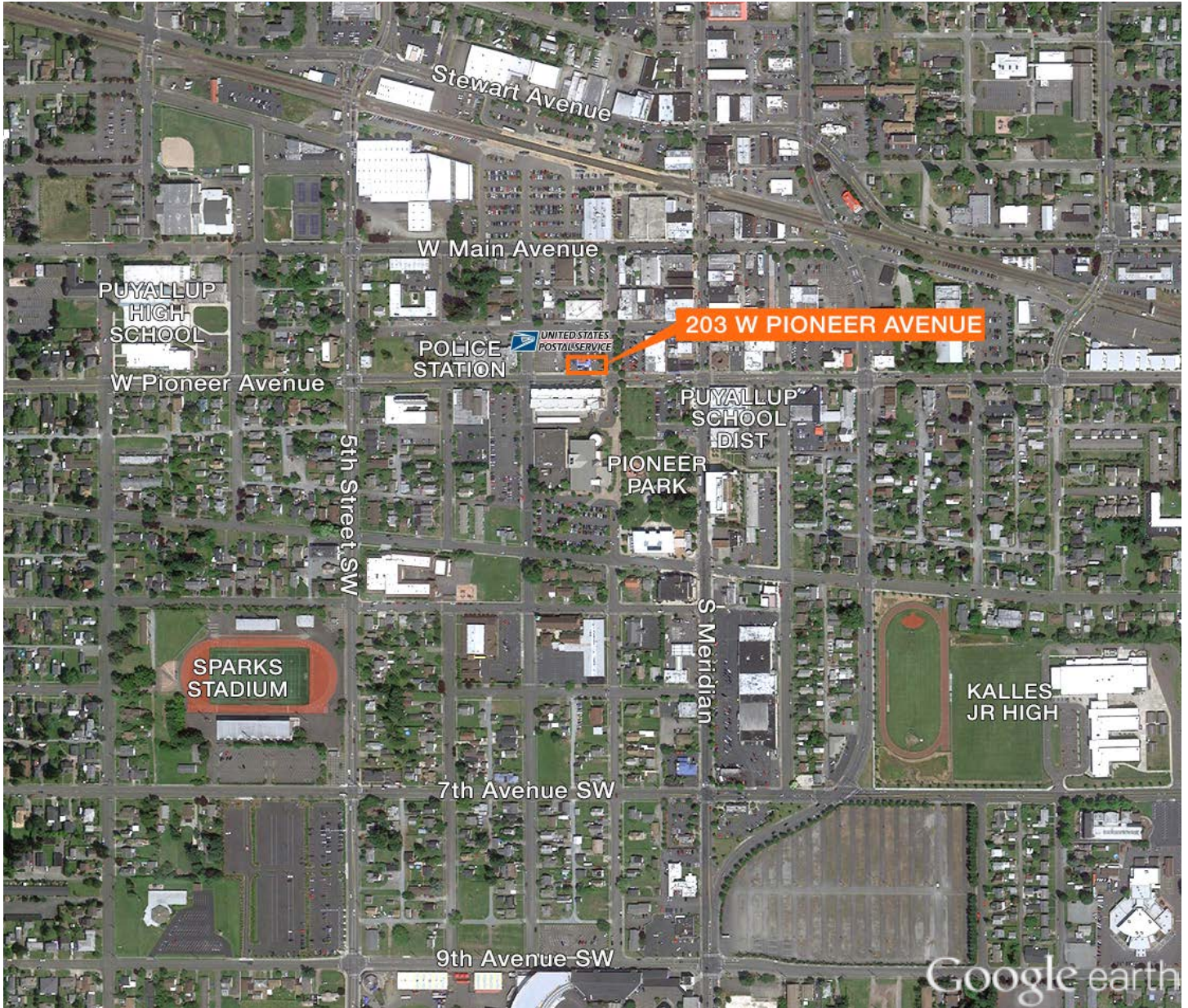
Location



Contact

Jerome O'Leary
253.779.9292
joleary@kiddermathews.com

203 W Pioneer Avenue



Contact

Jerome O'Leary
253.779.9292
joleary@kiddermathews.com