

For Sale

Vacant Commercial / Retail Land

FRANKLIN STREET & SR 429, OCOEE, FL 34761

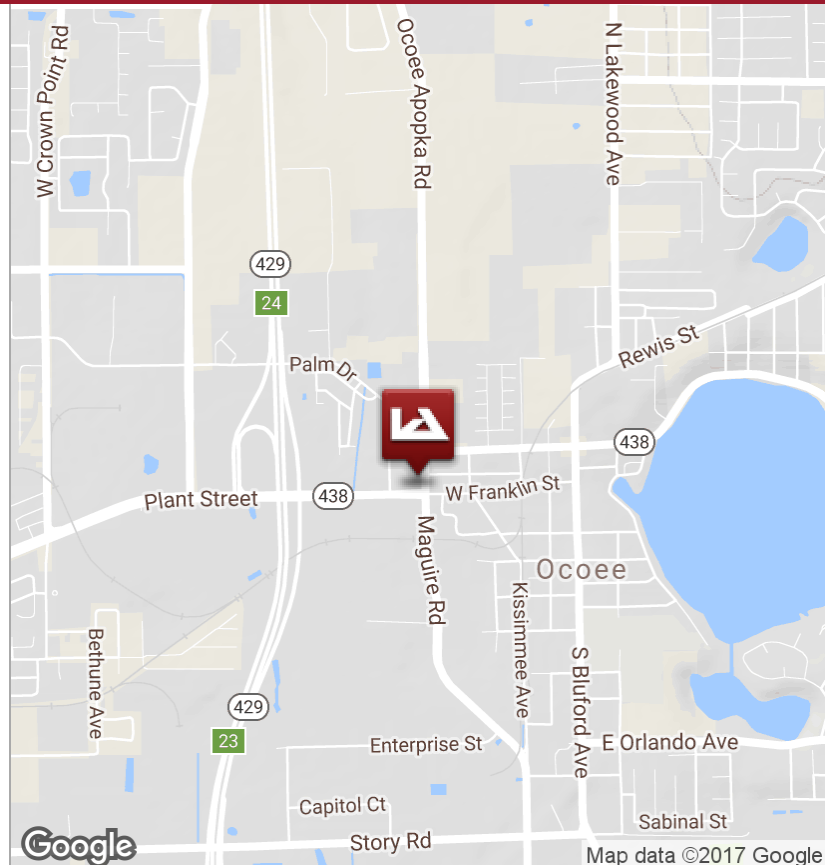


BUILDING DATA

- 10.37± Acres Vacant Commercial Land
- 5.87± Acres are Usable; 4.5 Acres are Wetlands
- Zoned C-2
- Approximately 945± feet of frontage on SR 429
- SR 429 Traffic Count: 37,500 VPD
- Approximately 405± feet of frontage on Franklin Street / Plant Street
- Franklin Street Traffic Count: 1,500 VPD

ECONOMIC DATA

Sale Price: \$1,320,750 (\$225,000/acre)



For more information contact:
 William "Bo" Bradford, CCIM, SIOR
 bbradford@lee-associates.com
 D: 321.281.8502

LeeCFL.com



1017 E. SOUTH STREET
 ORLANDO, FL 32801

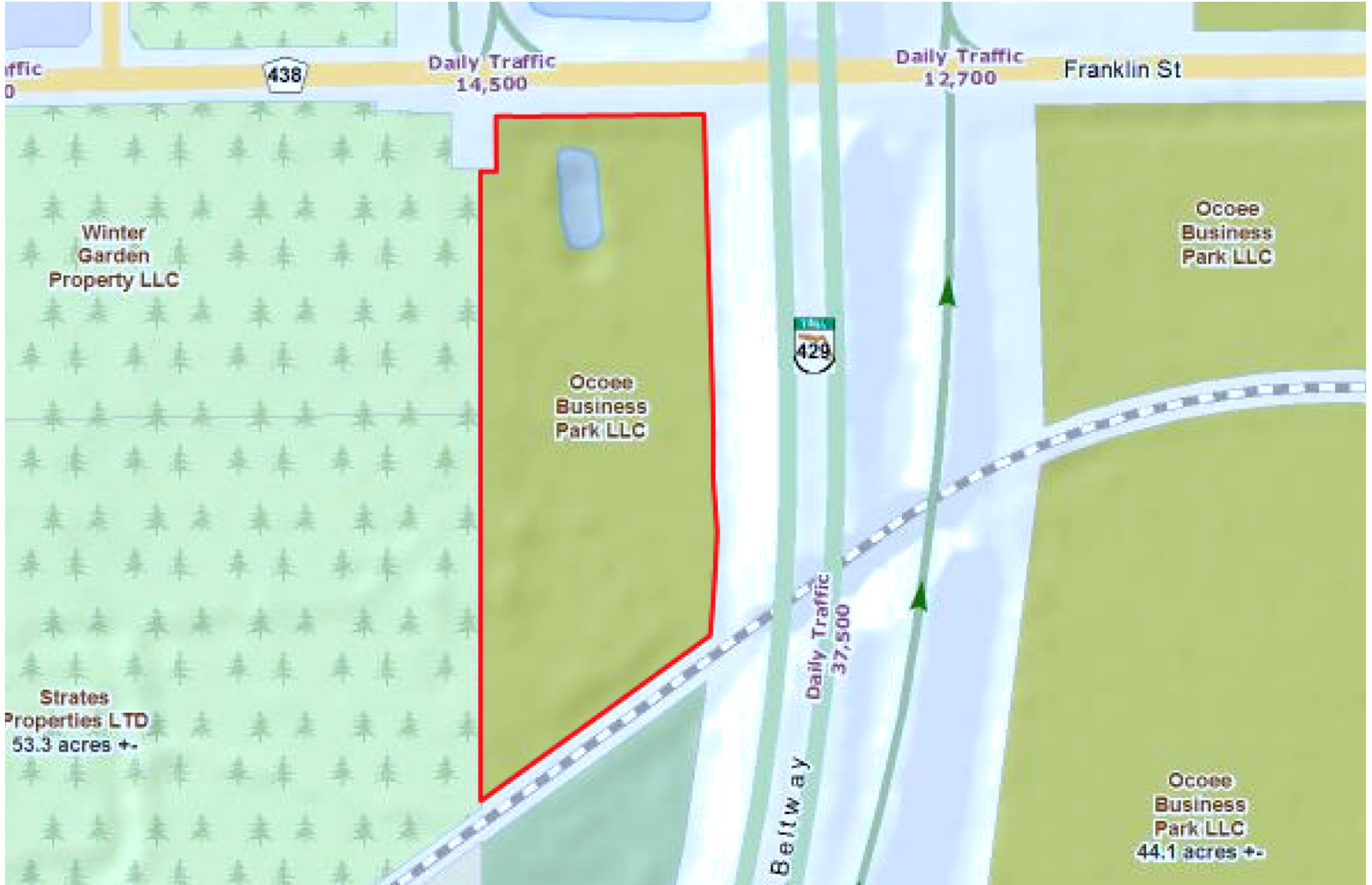
We obtained the information above from sources we believe to be reliable. However, we have not verified its accuracy and make no guarantee, warranty or representation about it. It is submitted subject to the possibility of errors, omissions, change of price, rental or other conditions, prior sale, lease or financing, or withdrawal without notice. We include projections, opinions, assumptions or estimates for example only, and they may not represent current or future performance of the property. You and your tax and legal advisors should conduct your own investigation of the property and transaction.

P: 321.281.8500

For Sale

Vacant Commercial / Retail Land

FRANKLIN STREET & SR 429, OCOEE, FL 34761



1017 E. SOUTH STREET
ORLANDO, FL 32801

For more information contact:
William "Bo" Bradford, CCIM, SIOR
bbradford@lee-associates.com
D: 321.281.8502

We obtained the information above from sources we believe to be reliable. However, we have not verified its accuracy and make no guarantee, warranty or representation about it. It is submitted subject to the possibility of errors, omissions, change of price, rental or other conditions, prior sale, lease or financing, or withdrawal without notice. We include projections, opinions, assumptions or estimates for example only, and they may not represent current or future performance of the property. You and your tax and legal advisors should conduct your own investigation of the property and transaction.

LeeCFL.com



P: 321.281.8500