

FOR LEASE

900 Meridian Avenue E
Milton, WA 98354



NEW TENANTS!

GROCERYOUTLET
Bargain Market



Great Clips®
IT'S GONNA BE GREAT™



SURPRISE LAKE SQUARE

Justin Holmes | Josh Parnell

First Western Properties—Tacoma Inc. | 253.472.0404
6402 Tacoma Mall Blvd, Tacoma, WA 98409 | fwp-inc.com

SURPRISE LAKE SQUARE is a strong, grocery anchored shopping center situated between I-5 and State Route 167. It is a bustling neighborhood shopping center with national anchors such as Safeway, Rite Aid and Anytime Fitness. It offers high visibility on the best corner in Milton, along with close proximity to Federal Way, Puyallup, Fife, Kent and Auburn.

900 MERIDIAN AVENUE E:

AVAILABLE:

940 - 8,500 SF \$9.00 - 40.00 PSF

- Great freestanding pad opportunities available, one with a drive-thru opportunity
- Ample parking at 5/1,000



Population



Average HH Income



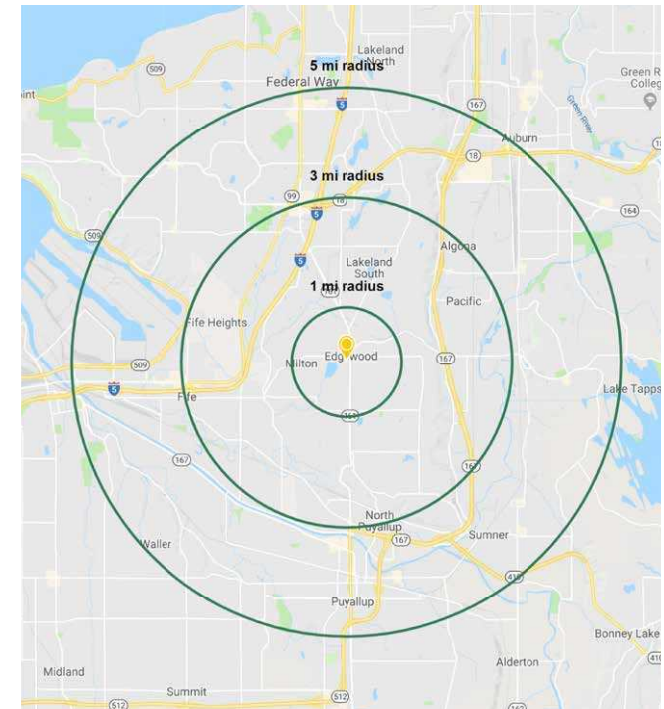
Daytime Population

Regis - 2020

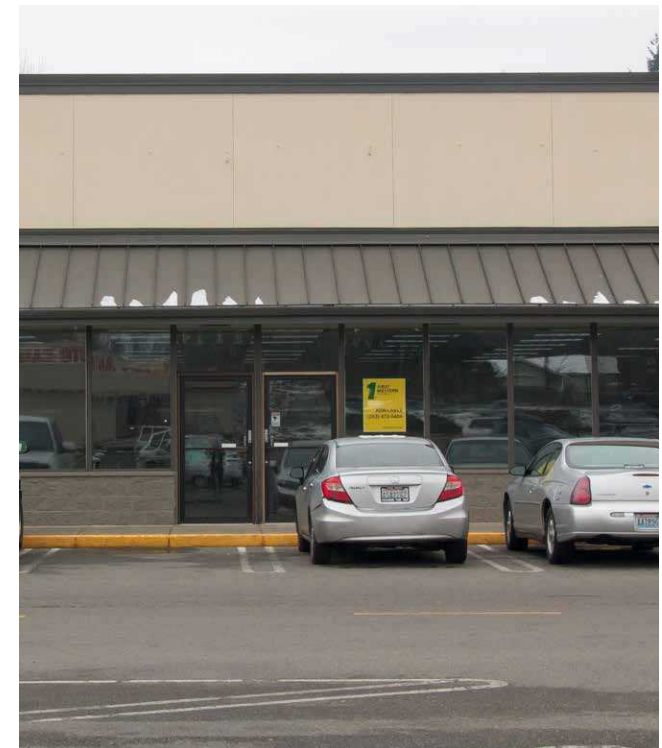
	Population	Average HH Income	Daytime Population
Mile 1	9,390	\$97,161	4,540
Mile 3	51,737	\$100,574	41,336
Mile 5	182,568	\$96,177	145,272

TENANTS

GROCERYOUTLET
bargain market
COMING SOON!



SUMMARY



LOCATION DETAILS



25,800 CPD
Meridian Ave E



4,830 CPD
Milton Way



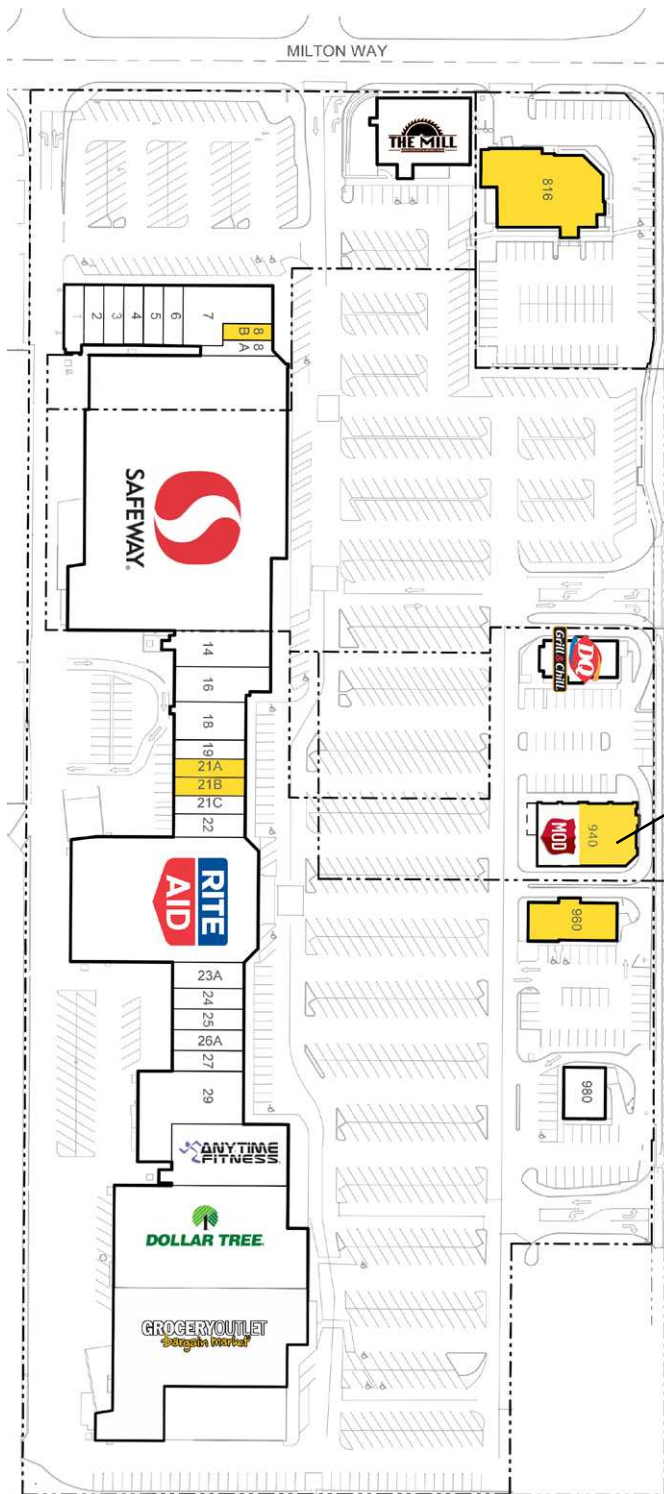
Located in a
bustling neighborhood
shopping center



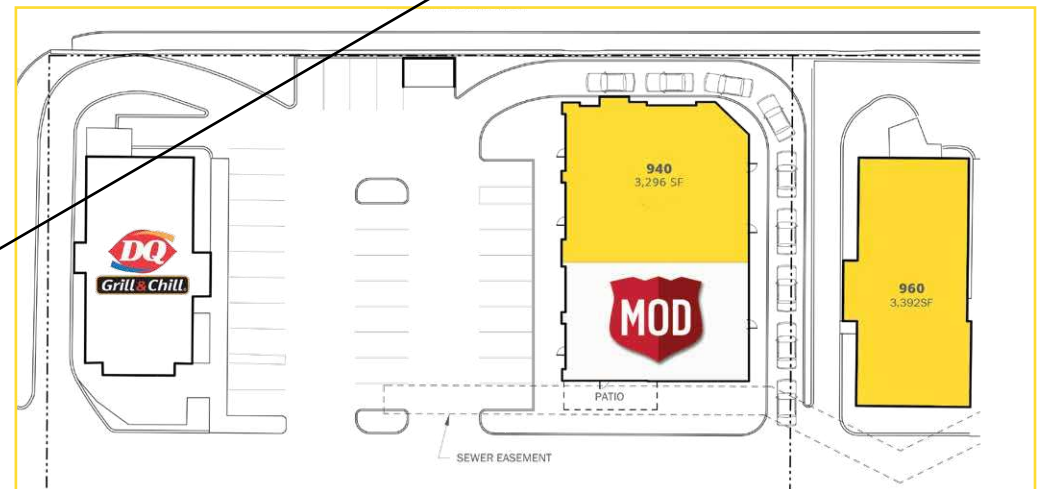
Located between
I-5 and SR 167



SITE PLAN



PROPOSED PAD OPPORTUNITY WITH DRIVE-THRU



Suite	SF	Rate	Details
8B	704	\$28.00, NNN	Former Lash & Brow Art
21A	1,086	\$26.00, NNN	Former Hallmark Space
21B	1,114	\$26.00, NNN	Former Hallmark Space
940	3,296	\$40.00, NNN	Proposed Endcap (Can be demised)
960	3,392	\$35.00, NNN	Restaurant Pad w/ Drive-Thru
816	8,500	\$24.00, NNN	Free Standing Building (Call for details)



MILTON, WA is a quiet, peaceful community surrounded by fields, trees, open vistas and gardens. Its quiet atmosphere offers a welcome respite from the hustle and bustle of neighboring Tacoma, just ten minutes away. Through strong leadership, frequent community events, quality schools, and strong relationships between citizens, business and city government, Milton has retained its picturesque charm and quality.

TACOMA | KIRKLAND | PORTLAND | SEATTLE



RELATIONSHIP FOCUSED. RESULTS DRIVEN.

JUSTIN HOLMES

253.447.2282
justin@firstwesternproperties.com

JOSH PARNELL

253.284.3630
josh@firstwesternproperties.com



First Western Properties—Tacoma Inc. | 253.472.0404
6402 Tacoma Mall Blvd, Tacoma, WA 98409 | fwp-inc.com

© First Western Properties, Inc. DISCLAIMER: The above information has been secured from sources believed to be reliable, however, no representations are made to its accuracy. Prospective tenants or buyers should consult their professional advisors and conduct their own independent investigation. Properties are subject to change in price and/or availability without notice.