

**Multi-Family Land - Approx. 7.48 Acres, La Quinta**

**FOR SALE**

# SEC WASHINGTON & AVENUE 50



## PROPERTY HIGHLIGHTS

- ★ Multi-Family Land
- ★ Excellent Exposure
- ★ All Utilities in Street
- ★ Zoning: High Density Residential
- ★ APN: 770-040-012
- ★ Close to a Truman Elementary School

**Asking  
\$3,000,000**

**Don Gittelson**  
**760-774-2117**  
**dlgittel@aol.com**

CAL BRE License # 00365060

DISCLAIMER: The information above has been obtained from sources believed reliable. While we do not doubt its accuracy, we have not verified it and make no guarantee, warranty or representation about it. It is your responsibility to independently confirm its accuracy and completeness. Any projections, opinions, assumptions or estimates used are for example only, and do not represent the current or future performance of the property. Raw aerial imagery if applicable is provided by Google Earth Pro/Landiscover or Live Maps (Microsoft Virtual Earth).

7.48acWashingtonAve50LQ.psd

Baxley Properties, Inc.  
73712 Alessandro Drive, Suite B-4  
Palm Desert, CA 92260  
760-773-3310 Tel. 790-773-3013 Fax.  
www.baxleyproperties.com



THIS MAP WAS PREPARED FOR ASSESSMENT PURPOSES ONLY. NO LIABILITY IS ASSUMED FOR THE ACCURACY OF THE DATA SHOWN. ASSESSOR'S PARCEL MAP MAY NOT COMPLY WITH LOCAL LOT-SPLIT OR BUILDING SITE ORDINANCES.

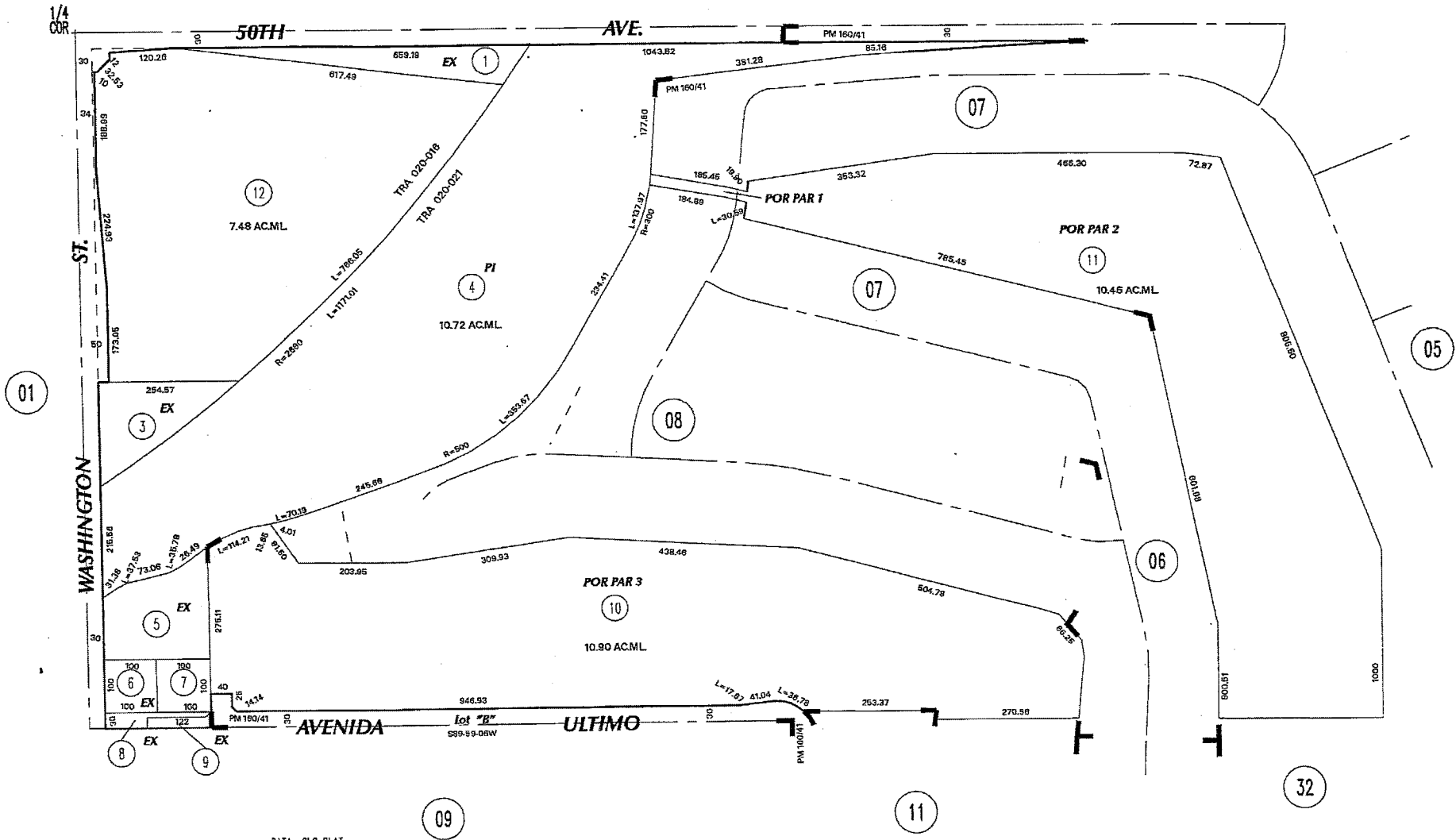
POR. NE 6 T. 6S., R. 7E.  
CITY OF LA QUINTA

T.R.A. 020-016  
020-021

770-C  
769-04

646  
07

1" ANGLE = 20'



DATA: GLO PLAT

0977